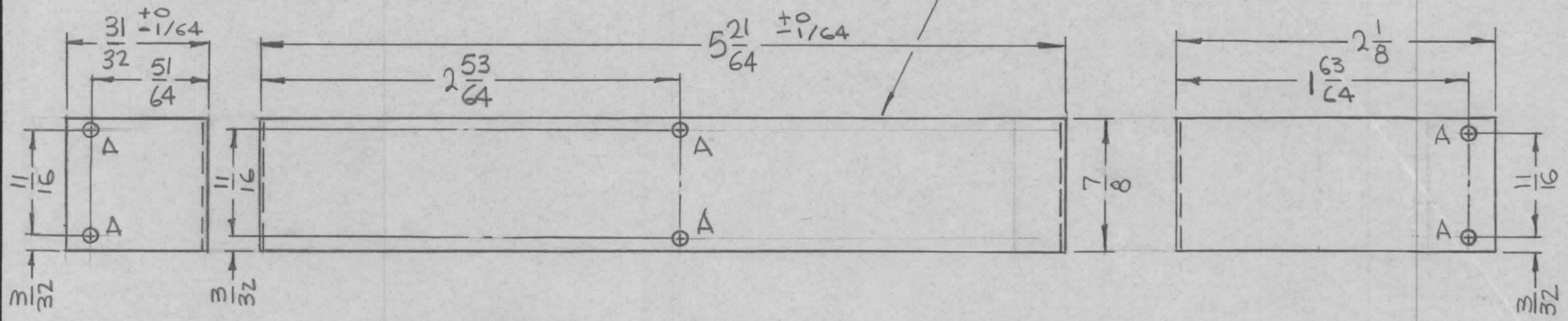


REQ. PER UNIT	USED ON			MS4458	Ø
	MODEL	ASS'Y. NO.	DATE		
2	RFTA-1		8-12-65		

HOLES:
A-7/64 DIA. (6 REQ.)

MARK TMC PART NO. (MS4458)
1/8 HIGH GOTHIC W/LATEST
REV. LETTER. (ON REAR)



- UNLESS OTHERWISE SPECIFIED:
1. USE MATERIAL THICKNESS FOR MAXIMUM RADIUS ON ALL BENDS
 2. ALL ANGULAR BENDS 90 DEGREES
 3. REMOVE ALL BURRS AND SHARP EDGES

REQ.	ITEM	PART NO.	F. BUDETTI DESCRIPTION				SYMBOL	
Ø			.032 THICK				THE TECHNICAL MATERIEL CORP. MAMARONECK. NEW YORK	
			STOCK SIZE					
X1	ORIGINAL RELEASE FOR PRODUCTION	5/19/66	Ø	CV				
			ALUMINUM				COVER, GEAR BOX	
			MATERIAL					
SYM	DESCRIPTION	DATE	CH. NO.	DRAFTS	CHECKER	ENG. APP.		
UNLESS OTHERWISE SPECIFIED DIMENSIONS ARE IN INCHES AND INCLUDE CHEMICALLY APPLIED OR PLATED FINISHES		SCALE	1:1					
DECIMALS .X ± .05 .XX ± .01 .XXX ± .005	TOLERANCES	FRACTIONS ± 1/64 ANGLES ± 0° 30'	CODE A	5052-H32				
			TYPE & TEMPER	HEAT TREAT. SPEC.	DRAWN	CHECKED	FINAL APPROVAL	
			S404 YEL. IRIDITE	QA 6/19/66			MS4458	
			FINISH & SPEC. NO.	ELEC. DES. APP.	MECH. DES. APP.			