

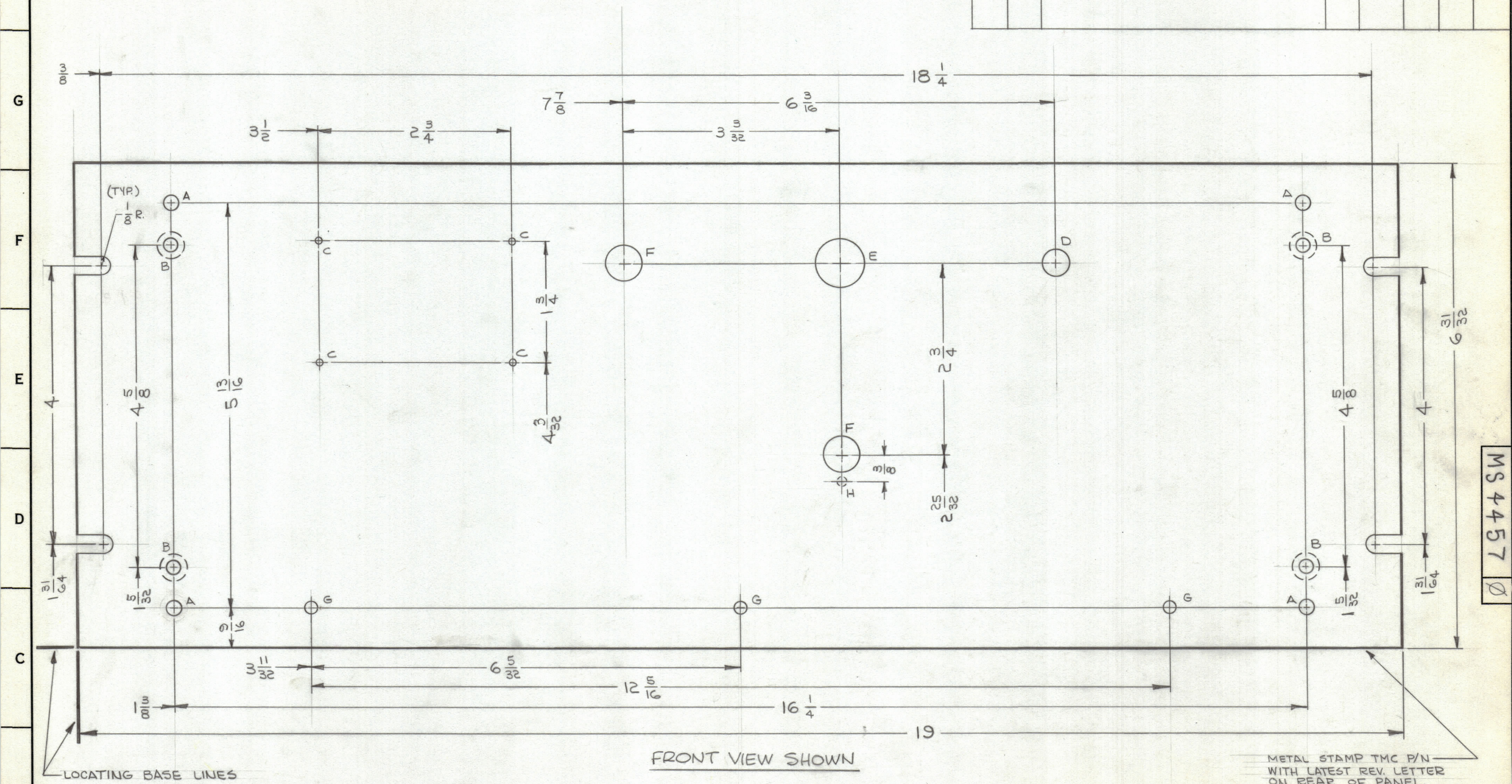
MACHINING:

1. MILL ALL EDGES.
2. HOLES MUST BE DRILLED, UNLESS OTHERWISE SPECIFIED.
3. LATERAL BOW OF PANEL MUST BE KEPT TO .031 TOLERANCE.
4. PANEL MUST BE FREE OF ALL MACHINING MARKS, GOUGES AND SCRATCHES. IF NECESSARY, SAND FRONT OF PANEL WITH NO. 120 GRIT SANDPAPER.

FINISH NOTES:

1. S404 - IRIDITE 14-2 AL-COAT.
2. S114 - ZINC CHROMATE PRIMER } FRONT AND
3. S115 - SMOOTH GRAY ENAMEL } EDGES ONLY

REVISIONS							
ZONE	SYM	DESCRIPTION	DATE	E.M.N. NO.	DRAFT	CHKD	APPD
	B	ORIGINAL RELEASE FOR PRODUCTION	4/27/65	-A-			



HOLE	DESCRIPTION	REQ.
A	13/64 DIA.	4
B	.196 DIA. C'SINK 82° TO .390, ON REAR	4
C	#43 DRILL (.076 DIA.)	4
D	3/8 DIA.	1
E	11/16 DIA	1
F	1/2 DIA	2
G	11/64 DIA	3
H	1/8 DIA x 3/32 DR ON REAR	1

FRONT VIEW SHOWN

METAL STAMP TMC P/N WITH LATEST REV. LETTER ON REAR OF PANEL.

REF: LD1844

REQ'D.	ITEM	PART NUMBER	DESCRIPTION	SYMBOL
F. EATON LIST OF MATERIAL				
MATERIAL		3/16, ALUMINUM 2024-T3		
FINISH		SEE NOTES		
TITLE		PANEL, FRONT		
UNLESS OTHERWISE SPECIFIED DIMENSIONS ARE IN INCHES AND INCLUDE CHEMICALLY APPLIED OR PLATED FINISHES		DRAWN: [Signature] DATE: 4-27-65		
DECIMALS .X ± .05 .XX ± .01 .XXX ± .005		CHECKED: [Signature] DATE: 4/27/65		
FRACTIONS TOLERANCES ± 1/64 ANGLES ± 0° 30'		ELECT. DES. DATE: 4/27/65		
MECH. DES. [Signature]		DATE: 4-28-65		
SHEET		REV. LTR.		

Q'TY./UNIT	MODEL USED ON	ASS'Y. NO.
SCALE 1:1	CODE A	

NOTES

THE CONTENTS OF THIS DRAWING ARE THE EXCLUSIVE PROPERTY OF THE TECHNICAL MATERIEL CORP. ITS UNAUTHORIZED USE OR REPRODUCTION IN WHOLE OR IN PART IS STRICTLY FORBIDDEN.

MS4457