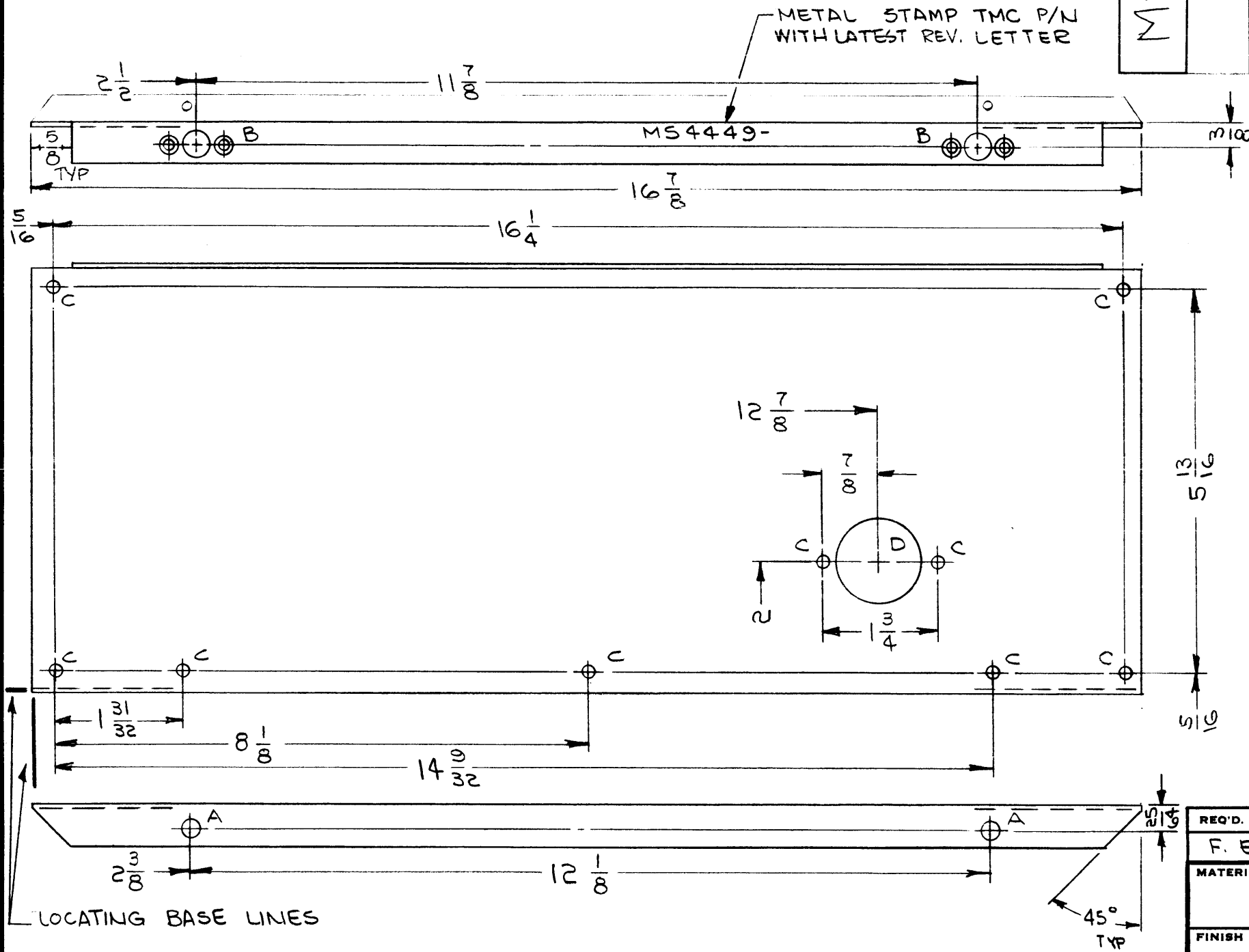


UNLESS OTHERWISE SPECIFIED:

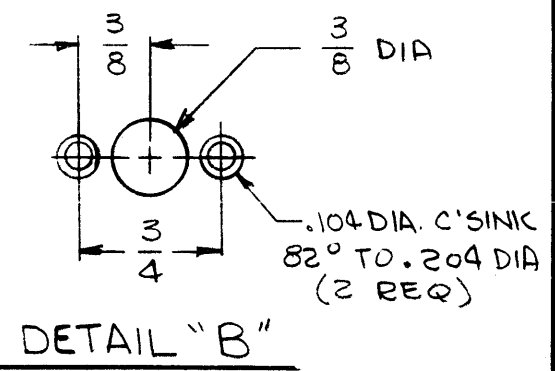
1. USE MATERIAL THICKNESS FOR MAXIMUM RADIUS ON ALL BENDS
2. ALL ANGULAR BENDS 90 DEGREES
3. REMOVE ALL BURRS AND SHARP EDGES
4. MOUNT INSERTS AFTER FINISHING

SYM	DESCRIPTION	REVISIONS				
		DATE	E.M.N. NO.	DRAFT	CHKD	APPD
Ø	ORIGINAL RELEASE FOR PRODUCTION	4/27/65				

MS4449



HOLE	DESCRIPTION	REQ.
A	1/4 DIA	2
B	SEE DETAIL	2
C	11/64 DIA	Ø
D	1-1/4 DIA.	1



REF: LD1845

REQ'D.	ITEM	PART NUMBER	DESCRIPTION	SYMBOL
<b>F. EATON LIST OF MATERIAL</b>				
MATERIAL			<b>THE TECHNICAL MATERIEL CORP.</b> MAMARONECK, NEW YORK	
.081 ALUMINUM 5052-H32				
FINISH			TITLE	
S404 - YEL. IRIDITE			PLATE, REAR	
UNLESS OTHERWISE SPECIFIED DIMENSIONS ARE IN INCHES AND INCLUDE CHEMICALLY APPLIED OR PLATED FINISHES			DRAWN	DATE
			4/26/65	FINAL APPROVAL
DECIMALS .X ± .05 .XX ± .01 .XXX ± .005			CHECKED	DATE
			4/27/65	DATE
FRACTIONS ± 1/64 ANGLES ± 0° 30'			ELECT. DES.	DATE
			DATE	DATE
TOLERANCES			MECH. DES.	DATE
			DATE	DATE
THE CONTENTS OF THIS DRAWING ARE THE EXCLUSIVE PROPERTY OF THE TECHNICAL MATERIEL CORP. ITS UNAUTHORIZED USE OR REPRODUCTION IN WHOLE OR IN PART IS STRICTLY FORBIDDEN.			MS4449	Ø
SCALE 1:2			SHEET	REV. LTR.

NOTES