

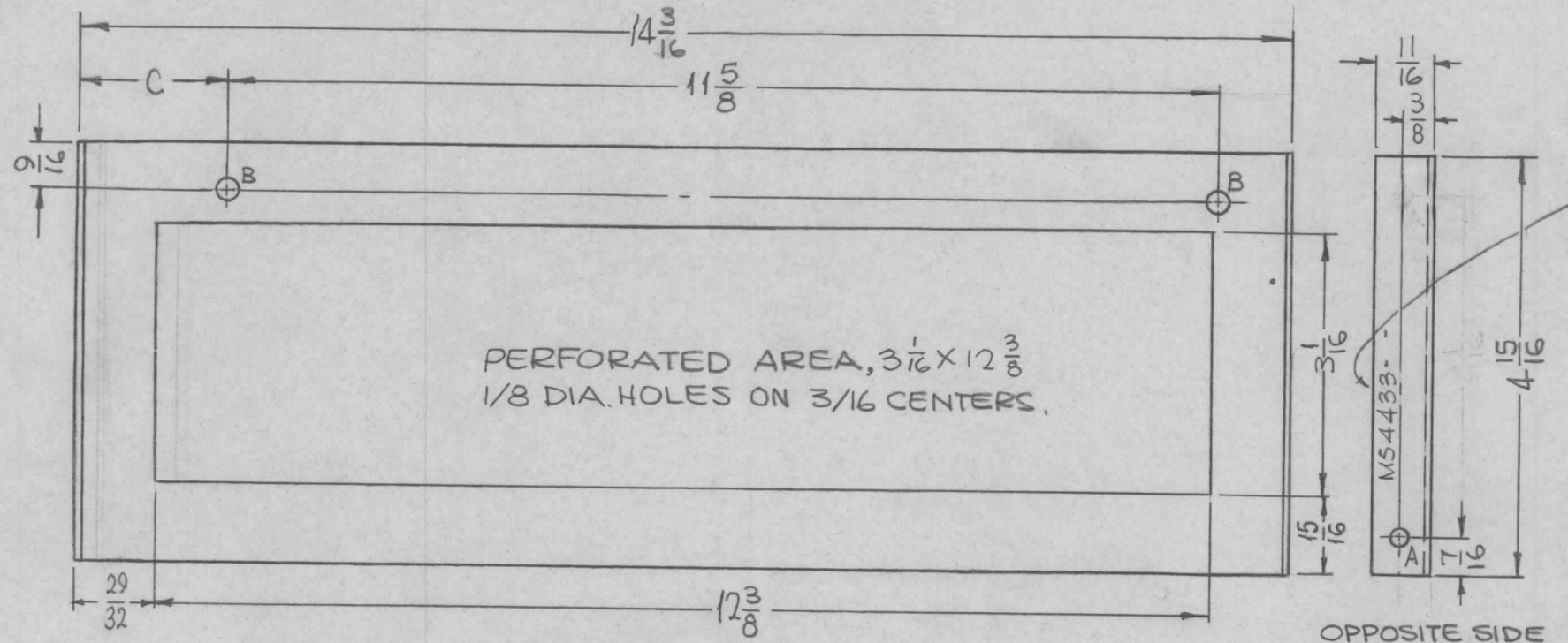
TMC P/N	C
MS4433-1	1-23/32
MS4433-2	27/32

UNLESS OTHERWISE SPECIFIED:

1. USE MATERIAL THICKNESS FOR MAXIMUM RADIUS ON ALL BENDS
2. ALL ANGULAR BENDS 90 DEGREES
3. REMOVE ALL BURRS AND SHARP EDGES

REQ. PER UNIT	USED ON		
	MODEL	ASS'Y. NO.	DATE
1 EA	TST (110K)		3-5-65

MS4433 \emptyset



MARK TMC PART NO 1/8 HIGH GOTHIC WITH LATEST REV LETTER.

HOLES:
 A - $\frac{11}{64}$ DIA. — 1 REQ.
 B - $\frac{1}{4}$ DIA. — 2 REQ.

OPPOSITE SIDE SAME

							REQ. ITEM	PART NO.	F. BUDETTI	DESCRIPTION	SYMBOL	
										THE TECHNICAL MATERIEL CORP. MAMARONECK, NEW YORK		
\emptyset	ORIGINAL RELEASE FOR PRODUCTION	5-5-66	\emptyset	WJW				.064 THICK				
X	EXP. RELEASE	3-11-65	X	SRG				ALUMINUM		COVER, BOTTOM (DRIVER DRAWER)		
SYM	DESCRIPTION	DATE	CH. NO.	DRAFTS	CHECKER	ENG. APP.		MATERIAL				
UNLESS OTHERWISE SPECIFIED DIMENSIONS ARE IN INCHES AND INCLUDE CHEMICALLY APPLIED OR PLATED FINISHES		SCALE						5052-H32		SRG		
DECIMALS .X \pm .05 .XX \pm .01 .XXX \pm .005	TOLERANCES	FRACTIONS \pm 1/64 ANGLES \pm 0° 30'	CODE					TYPE & TEMPER	HEAT TREAT. SPEC.	DRAWN	CHECKED	FINAL APPROVAL
			A					S404 YEL. IRIDITE				
								FINISH & SPEC. NO.	ELEC. DES. APP.	MECH. DES. APP.	MS4433 \emptyset	