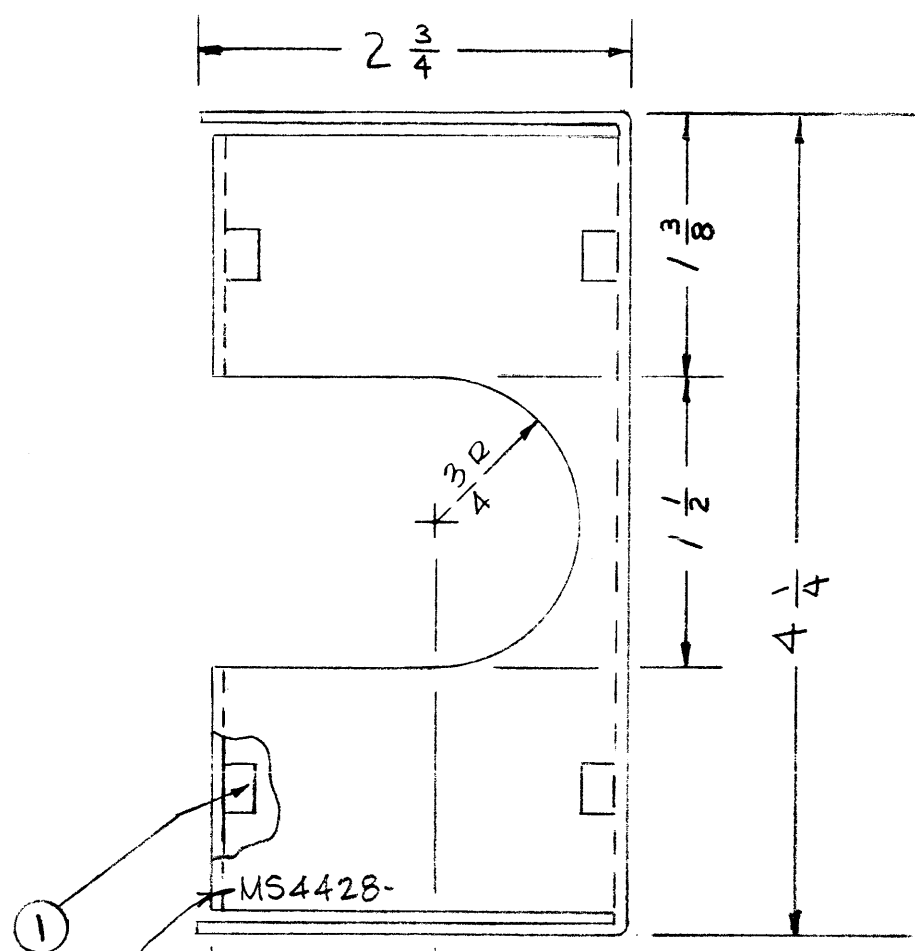
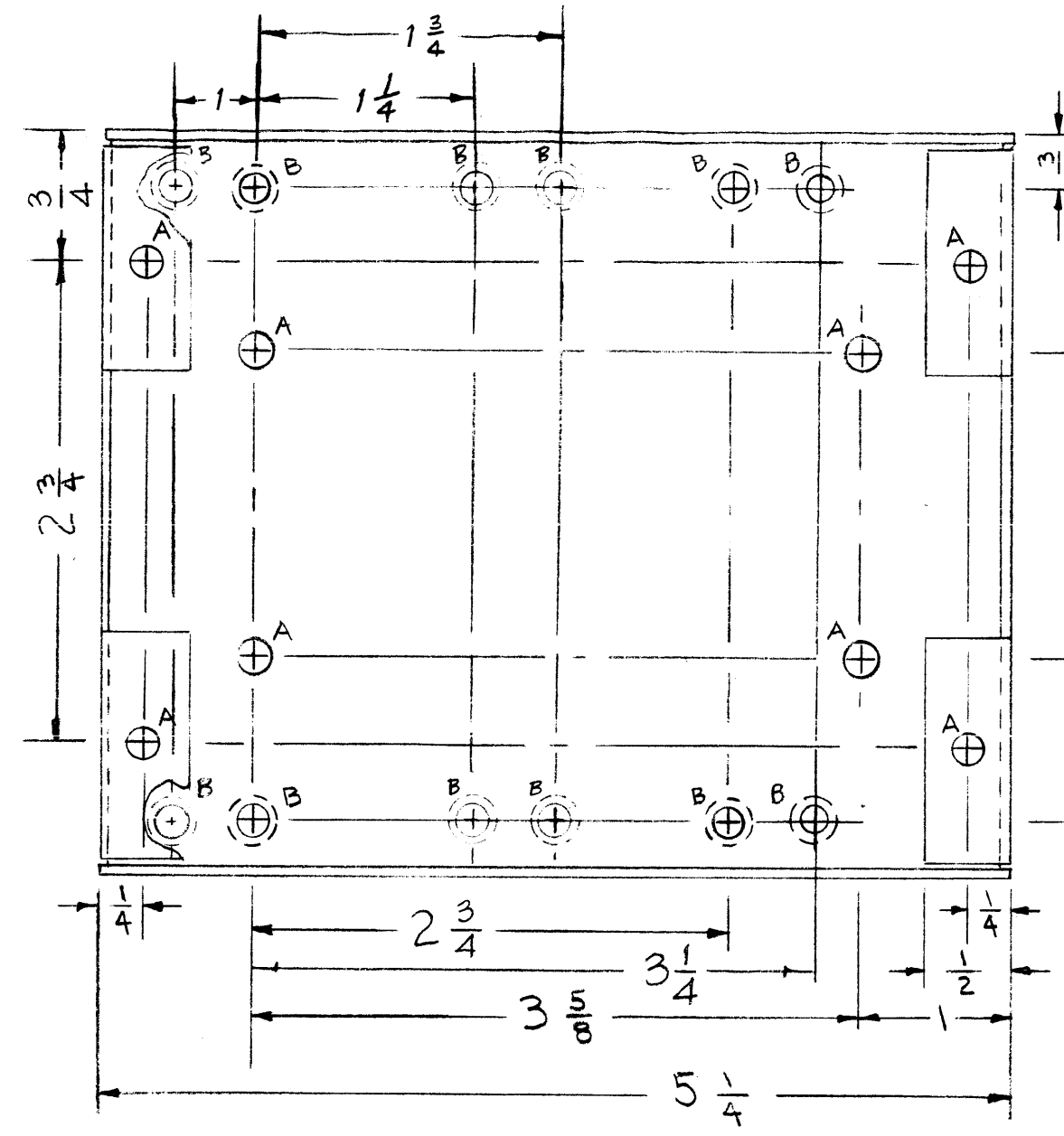


MS4428 A

REVISIONS

SYM	DESCRIPTION	DATE	E.M.N. NO.	DRAFT	CHKD	APPD
Ø	ORIGINAL RELEASE FOR PRODUCTION	4/20/65	-AA	MS		
A	6 "B" HOLES ADDED, METAL STAMP (TMC #) ADDED	8-26-65	14728	EVV	Q178	



METAL STAMP  
TMC PT. NO V8  
HIGH GOTHIC  
W/LATEST  
REV.  
LETTER

OPPOSITE SIDE SAME

A- .191-.194 DIA. (8 REQ.)  
B- DRILL + C'SINK FOR 6-32 F.H.S. (12 REQ.)

- UNLESS OTHERWISE SPECIFIED:
1. USE MATERIAL THICKNESS FOR MAXIMUM RADIUS ON ALL BENDS
  2. ALL ANGULAR BENDS 90 DEGREES
  3. REMOVE ALL BURRS AND SHARP EDGES
  4. MOUNT INSERTS AFTER FINISHING

NOTES

1	DDR-6M	
	DDRR-506	
Q'TY./UNIT	MODEL USED ON	ASS'Y. NO.
SCALE	CODE	
THE CONTENTS OF THIS DRAWING ARE THE EXCLUSIVE PROPERTY OF THE TECHNICAL MATERIEL CORP. ITS UNAUTHORIZED USE OR REPRODUCTION IN WHOLE OR IN PART IS STRICTLY FORBIDDEN.		

REQ'D.	ITEM	PART NUMBER	DESCRIPTION	SYMBOL
8	1	NT129-632-4	NUT, PLAIN, SPLINE	A

LIST OF MATERIAL

MATERIAL	THE TECHNICAL MATERIEL CORP. MAMARONECK, NEW YORK			
.064 ALUMINUM	TITLE CHASSIS, TERMINAL BOARD (RCVR OUTPUT)			
FINISH	UNLESS OTHERWISE SPECIFIED DIMENSIONS ARE IN INCHES AND INCLUDE CHEMICALLY APPLIED OR PLATED FINISHES		DRAWN	DATE
S404 YEL IRIDITE			M. STURMER	2-26-65
		ELECT. DES.	CHECKED	DATE
			Q178	4/20/65
		MECH. DES.	DATE	DATE
				4-20-65
		TOLERANCES		DECIMALS
		± 1/64		FRACTIONS
		± 0° 30'		ANGLES
		± .005		XXX ± .005
		FINAL APPROVAL		DATE
		MS4428		4/20/65
		SHEET		REV. LTR.
		A		