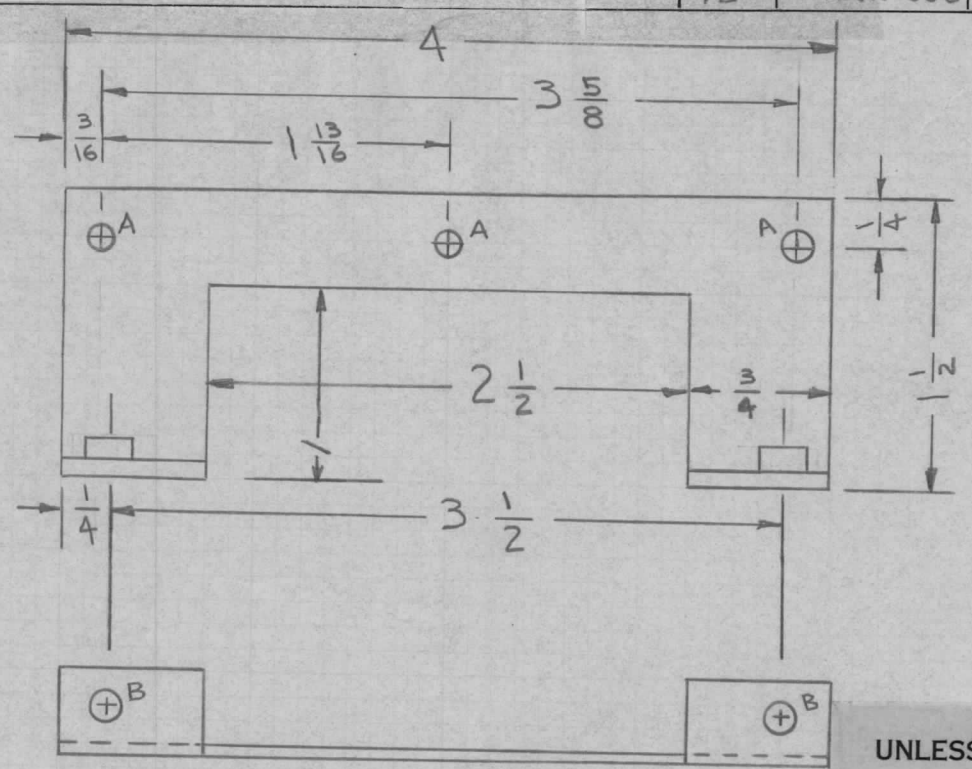
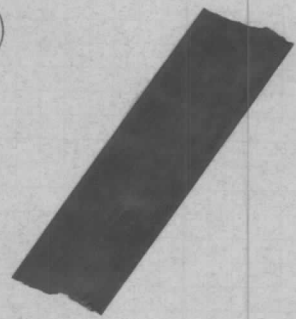
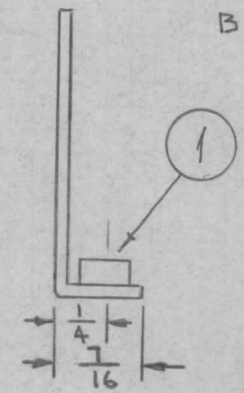


REQ. PER UNIT 12	USED ON		MS4427 \emptyset
	MODEL DDRR-506	ASS'Y. NO.	



A - 9/64 DIA. (3 REQ.)
 B - .191-.194 DIA (2 REQ.)



UNLESS OTHERWISE SPECIFIED:

1. USE MATERIAL THICKNESS FOR MAXIMUM RADIUS ON ALL BENDS
2. ALL ANGULAR BENDS 90 DEGREES
3. REMOVE ALL BURRS AND SHARP EDGES
4. MOUNT INSERTS AFTER FINISHING

2	1	NT129-632-4	NUT PLAIN, SPLINE	B
REQ. ITEM	PART NO.		DESCRIPTION	SYMBOL
	064		THE TECHNICAL MATERIEL CORP. MAMARONECK, NEW YORK	
	STOCK SIZE		BRACKET, MOUNTING, TERMINAL BOARD	
	ALUM.		MATERIAL	
	SCALE		M. STURMER 2-26-65	JCB 4/20/65
	TYPE & TEMPER		DRAWN	CHECKED
	HEAT TREAT. SPEC.		FINAL APPROVAL	
	S404 YEL. IRIDITE		4-20-65	MS4427 \emptyset
FINISH & SPEC. NO.			ELEC. DES. APP.	MECH. DES. APP.

SYMBOL	DESCRIPTION	DATE	CH. NO.	DRAFTS	CHECKER	ENG. APP.
\emptyset	ORIGINAL RELEASE FOR PRODUCTION	4/20/65	##	CJL		
UNLESS OTHERWISE SPECIFIED DIMENSIONS ARE IN INCHES AND INCLUDE CHEMICALLY APPLIED OR PLATED FINISHES		SCALE				
DECIMALS .X \pm .05 .XX \pm .01 .XXX \pm .005		FRACTIONS \pm 1/64 ANGLES \pm 0° 30'		TOLERANCES		