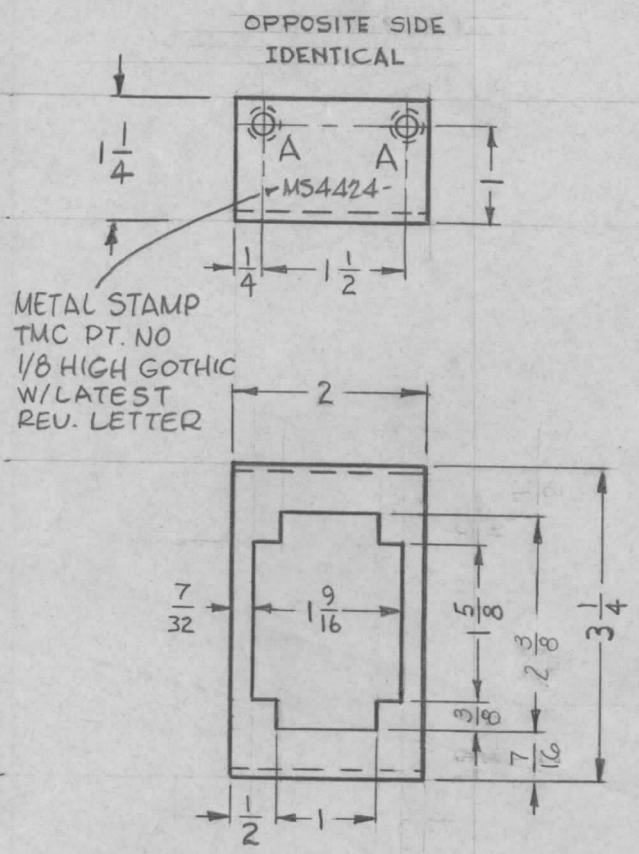


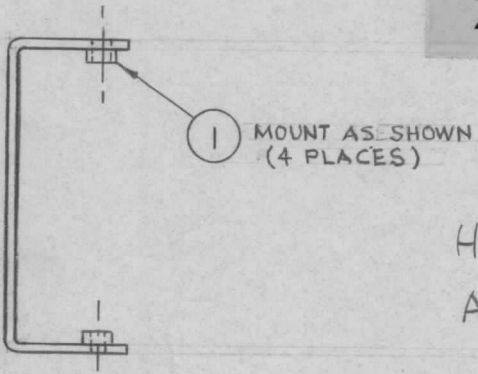
| REQ. PER UNIT | USED ON |            |         |
|---------------|---------|------------|---------|
|               | MODEL   | ASS'Y. NO. | DATE    |
| 1             | GPT-10K | AX 506     | 3/10/65 |
| 1             | GPT-10K | AX 507     | 3/10/65 |
| 1             | GPT-10K | AX 508     | 3/10/65 |
| 1             | GPT-10K | AX 558     | 3/10/65 |
| 1             | TSTE    |            | 3/10/65 |

MS4424 C



UNLESS OTHERWISE SPECIFIED:

1. USE MATERIAL THICKNESS FOR MAXIMUM RADIUS ON ALL BENDS
2. ALL ANGULAR BENDS 90 DEGREES
3. REMOVE ALL BURRS AND SHARP EDGES
4. MOUNT INSERTS AFTER FINISHING



HOLES REQ.  
A: .191-.194 DIA. 4

|   |   |   |         |             |            |           |   |                                 |                  |  |                 |                |
|---|---|---|---------|-------------|------------|-----------|---|---------------------------------|------------------|--|-----------------|----------------|
| C   | STOCK SIZE WAS .054 THK                     | 7.5.66                                    | 16500   | G.D.L.      | <i>JCB</i> | <i>AD</i> | 4 | 1                               | NT129-632-3      | NUT, ROUND, SWAGE TYPE                               | A               |                |
| B   | 2 3/8 WAS 2 1/8, 3/8 WAS 5/16, 7/16 WAS 1/2 | 3/7/66                                    | 15916   | WFW         | <i>JCB</i> | <i>AD</i> |   |                                 | .051 THK.        | THE TECHNICAL MATERIEL CORP.<br>MAMARONECK, NEW YORK |                 |                |
| A   | 1/4 DIM. ADDED - 5404 MS 5104               | 7/8/65                                    | 14414   | D.V.V.      | <i>JCB</i> | <i>AD</i> |   |                                 | STOCK SIZE       | BRACKET, SHIELD, MTG.                                |                 |                |
| Ø   | ORIGINAL RELEASE FOR PRODUCTION             | 3.11.65                                   | Ø       | <i>J.F.</i> |            |           |   |                                 | ALUMINUM IRIDITE |  |                 |                |
| SYM   | DESCRIPTION                                 | DATE                                      | CH. NO. | DRAFTS      | CHECKER    | ENG. APP. |   |                                 | MATERIAL         |  |                 |                |
| UNLESS OTHERWISE SPECIFIED DIMENSIONS ARE IN INCHES AND INCLUDE CHEMICALLY APPLIED OR PLATED FINISHES |   | SCALE                                     |         |             |            |           |   | 5052-H32                        |                  | <i>JJ</i>  | <i>JCB</i>      | <i>Roe</i>     |
| DECIMALS<br>.X ± .05<br>.XX ± .01<br>.XXX ± .005  | TOLERANCES                                  | FRACTIONS<br>± 1/64<br>ANGLES<br>± 0° 30' | CODE    |             |            |           |   | TYPE & TEMPER HEAT TREAT. SPEC. |                  | DRAWN  | CHECKED         | FINAL APPROVAL |
|   |   |   |         |             |            |           |   | 5404-IRIDITE, 14-2 AL-COAT      |                  |  | <i>JCB</i>      | MS4424 C       |
|   |   |   |         |             |            |           |   | FINISH & SPEC. NO.              |                  | ELEC. DES. APP.                                      | MECH. DES. APP. |                |