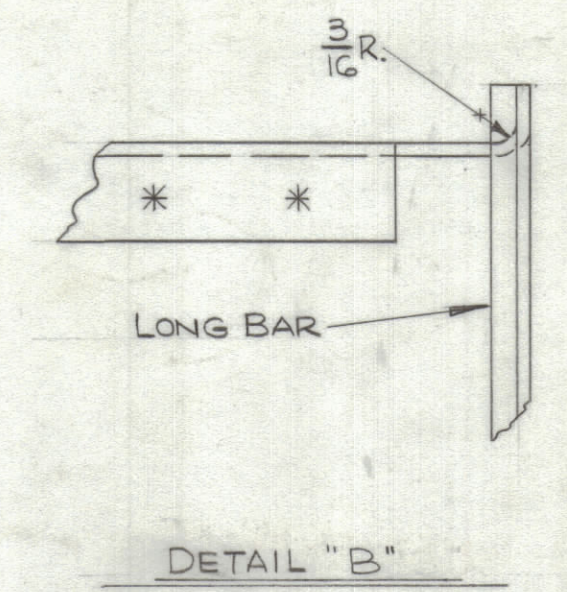
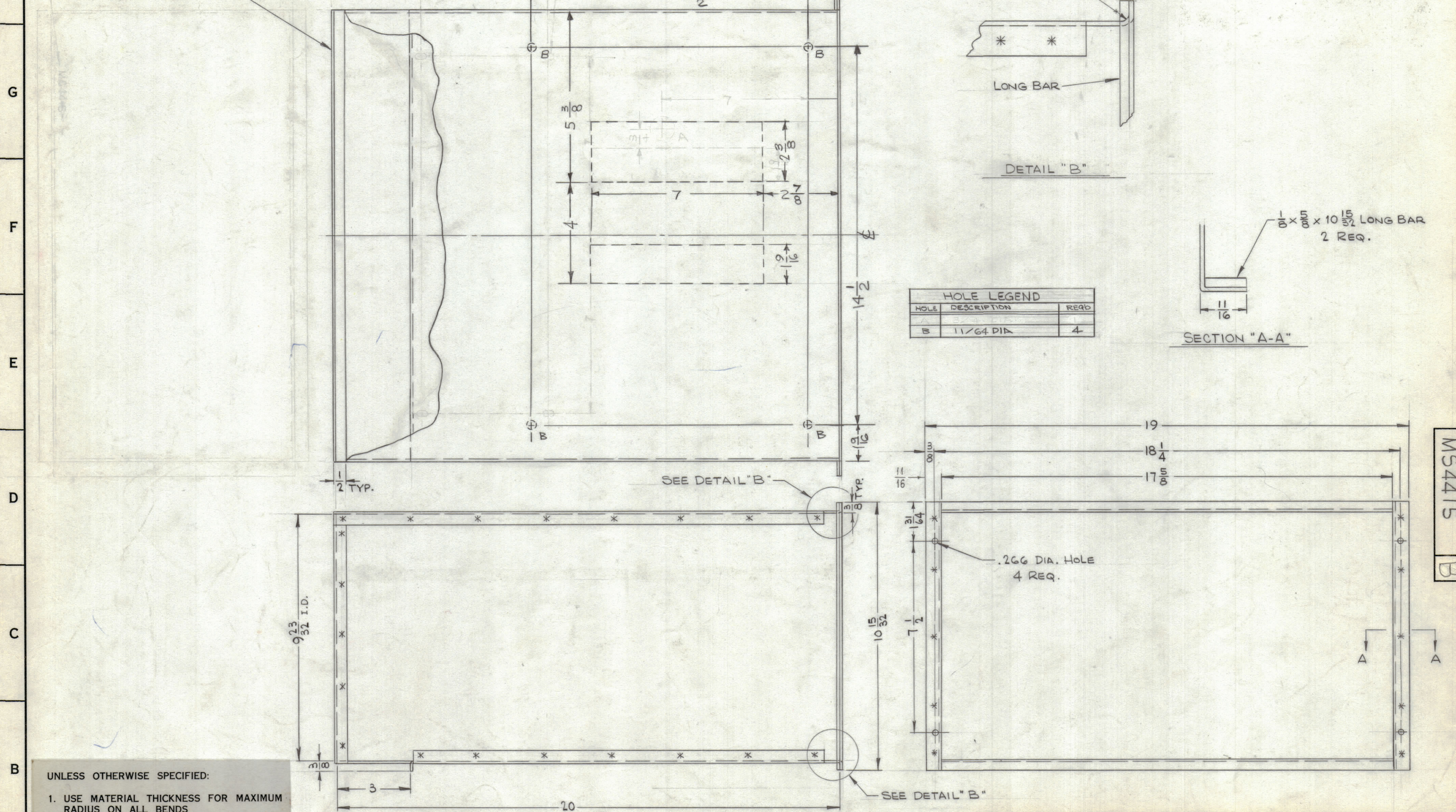
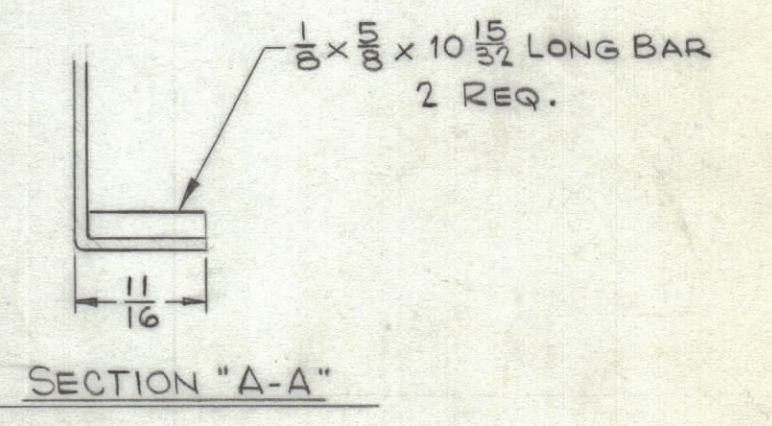


REVISIONS							
ZONE	SYM	DESCRIPTION	DATE	E.M.N. NO.	DRAFT	CHKD	APPD
	X2	REDRAWN	4-1-65	X2	HCA		
	Ø	ORIGIAN RELEASE FOR PRODUCTION	4-2-65	-#	HCA		
	A	7" X 1 9/16 CUTOUT, A, B HOLES ADDED	5,2464	4117	HCA		
	B	DELE. "A" HOLES; ADD. CUTOUT; ENLARGED EXIST. CUTOUT	4-25-66	16134	HCA		

METAL STAMP TMC PART NO. 1/8 HIGH GOTHIC.
W/LATEST REV. LETTER



HOLE LEGEND		
HOLE	DESCRIPTION	REQD
B	11/64 DIA	4



- UNLESS OTHERWISE SPECIFIED:
1. USE MATERIAL THICKNESS FOR MAXIMUM RADIUS ON ALL BENDS
 2. ALL ANGULAR BENDS 90 DEGREES
 3. REMOVE ALL BURRS AND SHARP EDGES
 4. SPOT WELD ALL JOINING PARTS SECURELY.
 5. FINISH :
S114 - ZINC CHROMATE PRIMER
S520 - BLUE-GRAY TEXTURED VINYL PAINT,
OR PRIME & PAINT PER CUSTOMER SPECIFICATION.

Q'TY/UNIT	MODEL USED ON	ASS'Y. NO.
3/8 : 1	RTKY	

THE CONTENTS OF THIS DRAWING ARE THE EXCLUSIVE PROPERTY OF THE TECHNICAL MATERIEL CORP. ITS UNAUTHORIZED USE OR REPRODUCTION IN WHOLE OR IN PART IS STRICTLY FORBIDDEN.

REQ'D.	ITEM	PART NUMBER	DESCRIPTION	SYMBOL
EATON LIST OF MATERIAL				
MATERIAL #16(.059)GA. CRS		THE TECHNICAL MATERIEL CORP. MAMARONECK, NEW YORK		
FINISH SEE NOTE		TITLE CABINET, UTILITY		
DRAWN HAUSTIN	DATE 4-1-65	FINAL APPROVAL J.E. Carter	DATE 4/15/65	
CHECKED J.P.	DATE 4-2-65			
UNLESS OTHERWISE SPECIFIED DIMENSIONS ARE IN INCHES AND INCLUDE CHEMICALLY APPLIED OR PLATED FINISHES		MS4415 B		
DECIMALS .X ± .05 .XX ± .01 .XXX ± .005	FRACTIONS ± 1/64 ANGLES ± 0° 30'	ELECT. DES. M.P.	DATE 4/15/65	SHEET

NOTES

MS4415 B