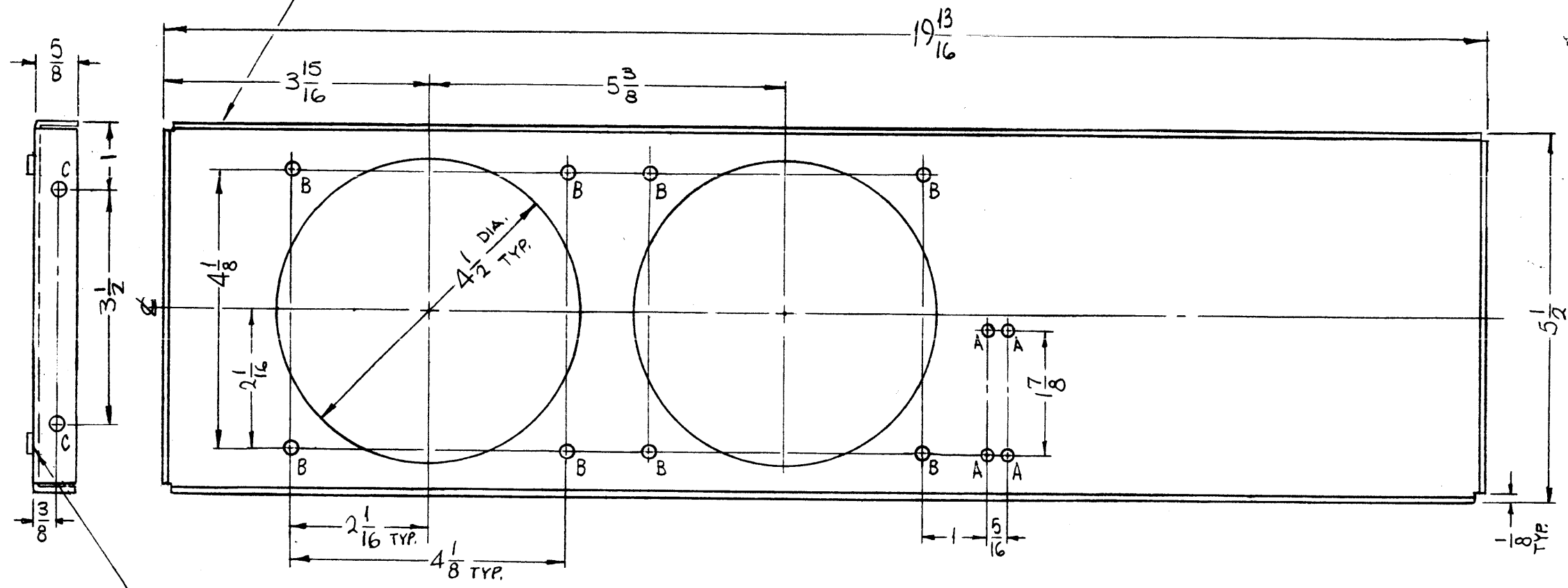


MS4413

REVISIONS						
SYM	DESCRIPTION	DATE	E.M.N. NO.	DRAFT	CHKD	APFD
X	EXP. RELEASE	3-4-65	X	SRG		
X1	ADDED LD REF. A NO.	3-25-65		BM		
X2	ITEM 1 WAS NT129-0940-4 'A' HOLE WAS .161-.164	3-26-65		BM		
Ø	ORIGINAL RELEASE FOR PRODUCTION	5/3/67	Ø	CV		JHQ

METAL STAMP TMC PART NO. (MS4413)  
1/8 HIGH GOTHIC W/LATEST  
REV. LETTER.

OPPOSITE  
SIDE  
SAME



HOLES	DESCRIPTION	REQ.
A	9/64 DIA.	4
B	.191-.194 DIA.	8
C	15/64 DIA.	4

MOUNT IN **2**  
ALL 'B' HOLES

UNLESS OTHERWISE SPECIFIED:

1. USE MATERIAL THICKNESS FOR MAXIMUM RADIUS ON ALL BENDS
2. ALL ANGULAR BENDS 90 DEGREES
3. REMOVE ALL BURRS AND SHARP EDGES
4. MOUNT INSERTS AFTER FINISHING

NOTES

1	TSTE-10K	A5010
Q'TY./UNIT	MODEL USED ON	ASS'Y. NO.
SCALE 1/2"=1"	CODE A	

THE CONTENTS OF THIS DRAWING ARE THE EXCLUSIVE PROPERTY OF THE TECHNICAL MATERIEL CORP. ITS UNAUTHORIZED USE OR REPRODUCTION IN WHOLE OR IN PART IS STRICTLY FORBIDDEN.

REF: LD 1835

REQ'D.	ITEM	PART NUMBER	DESCRIPTION	SYMBOL
8	2	NT 129-632-4	NUT, PLAIN SPLINE	B
	1	DELETED		

F. BUDETTI		LIST OF MATERIAL	
MATERIAL .081 THICK ALUMINUM 5052-H32		THE TECHNICAL MATERIEL CORP. MAMARONECK, NEW YORK	
FINISH S404 VEL. IRIDITE		TITLE PLATE, MTG, TOP FAN	
UNLESS OTHERWISE SPECIFIED DIMENSIONS ARE IN INCHES AND INCLUDE CHEMICALLY APPLIED OR PLATED FINISHES		DRAWN SRG	DATE 3-4-65
DECIMALS .X ± .05 .XX ± .01 .XXX ± .005		CHECKED JCF	DATE 7/22/65
FRACTIONS ± 1/64 ANGLES ± 0° 30'		ELECT. DES. JCF	DATE
TOLERANCES		MECH. DES. JCF	DATE
		FINAL APPROVAL <i>[Signature]</i> DATE 5/3/67	
		MS4413	
		SHEET	
		REV. LTR.	