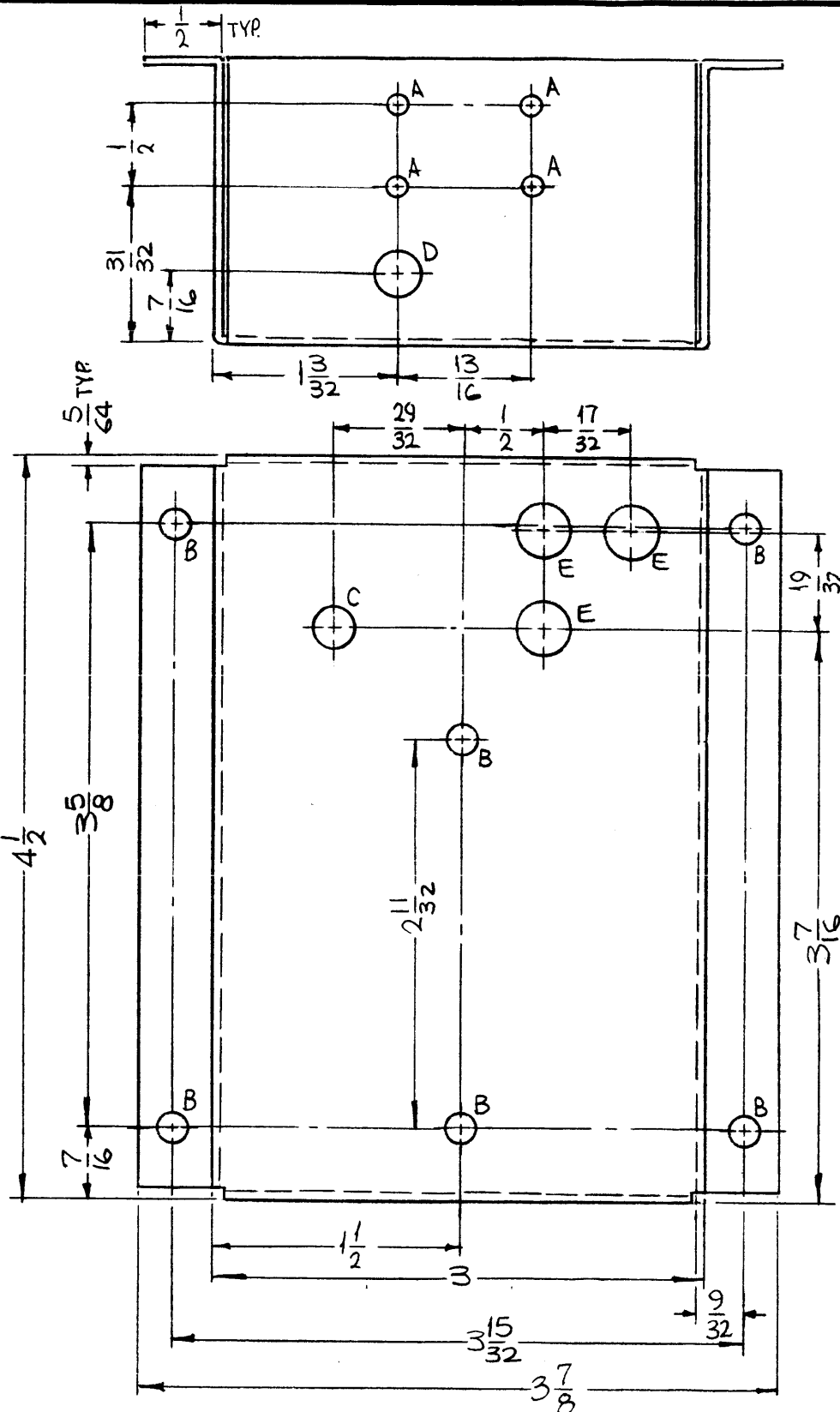


METAL STAMP TMC PART NO 1/8 HIGH GOTHIC W/LATEST REV. LETTER.

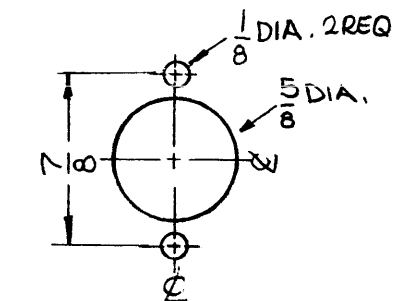
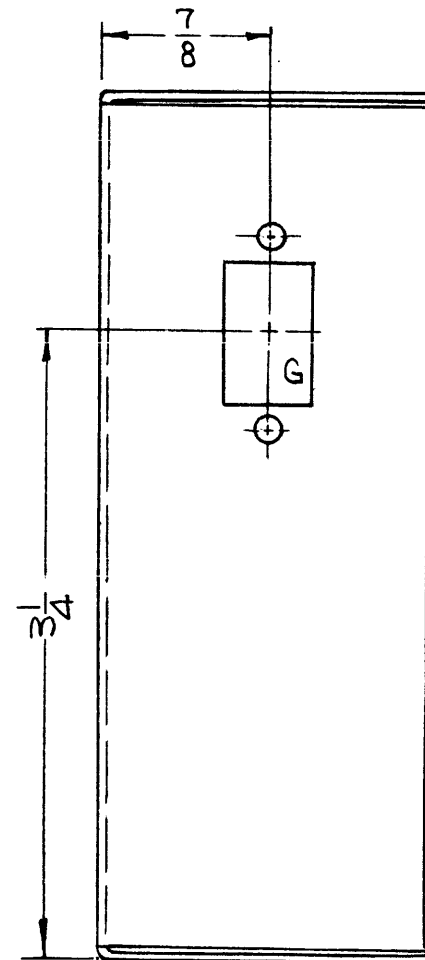
UNLESS OTHERWISE SPECIFIED:

1. USE MATERIAL THICKNESS FOR MAXIMUM RADIUS ON ALL BENDS
2. ALL ANGULAR BENDS 90 DEGREES
3. REMOVE ALL BURRS AND SHARP EDGES

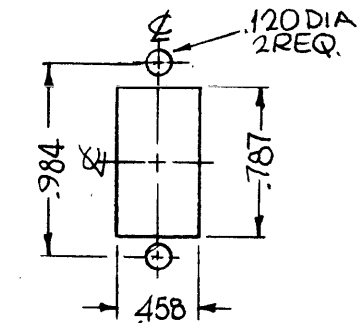
NOTES



MS4403



F-DETAIL



G-DETAIL

HOLES	DESCRIPTION	REQ
A	7/64 DIA.	4
B	11/64 DIA.	6
C	1/4 DIA.	1
D	17/64 DIA.	1
E	5/16 DIA.	3
F	SEE DETAIL	1
G	SEE DETAIL	1

REVISIONS						
SYM	DESCRIPTION	DATE	E.M.N. NO.	DRAFT	CHKD	APFD
X	EXP. RELEASE	3-1-65	X	SRG		
X1	3 7/8 DIM WAS 1 29/32 (ERROR) MAT'L THKNESS WAS .046	4-6-65	-M	SRG		
Ø	ORIGINAL RELEASE FOR PRODUCTION	7/26/67	Ø	CV		

REQ'D.	ITEM	PART NUMBER	DESCRIPTION	SYMBOL
F. BUDETTI LIST OF MATERIAL				
MATERIAL .063 THICK ALUMINUM 5052-H32			THE TECHNICAL MATERIEL CORP. MAMARONECK, NEW YORK	
FINISH S404 YELLOW IRIDITE			TITLE CHASSIS, METERING & LOAD SENSING	
UNLESS OTHERWISE SPECIFIED DIMENSIONS ARE IN INCHES AND INCLUDE CHEMICALLY APPLIED OR PLATED FINISHES			DRAWN SRG	DATE 3-1-65
DECIMALS .X ± .05 .XX ± .01 .XXX ± .005			CHECKED	DATE
FRACTIONS ± 1/64 ANGLES ± 0° 30'			ELECT. DES. SRG	DATE
TOLERANCES			MECH. DES. SRG	DATE 7/26/67
THE CONTENTS OF THIS DRAWING ARE THE EXCLUSIVE PROPERTY OF THE TECHNICAL MATERIEL CORP. ITS UNAUTHORIZED USE OR REPRODUCTION IN WHOLE OR IN PART IS STRICTLY FORBIDDEN.			FINAL APPROVAL MS 4403	
SCALE 1:1			REV. LTR.	