

MS4308

REVISIONS						
SYM	DESCRIPTION	DATE	E.M.N. NO.	DRAFT	CHKD	APPD
X	EXPERIMENTAL RELEASE	12-10-64	X	SRG		
X1	DIM. 9 11/32 WAS 9 1/4, A HOLES WERE 5/32	12-18-64	X1	SRG		
X2	C HOLES ADDED	1-6-64	X2	SRG		
X3	A HOLES WERE 11/64 DIA.	1-26-65	X3	SRG		
X4	2 FASTENERS REMOVED TOP LIP,	1-26-65	X4	SRG		
X5	PERFORATED AREA ADDED	2-19-65	X5	SRG		
X6	3/16R. NOTCH ADDED	7-29-65	X6	JPH		
X7	PERFORATED AREA HOLES ADDED, REMOVED NOTCH ON TOP VIEW	9-14-65	X7	JPH		
Ø	ORIGINAL RELEASE FOR PRODUCTION	4-12-66	Ø	G.D.L		

HOLES	DESCRIPTION	REQ.
A	DR. 144 DIA. C'SINK 82° X. 284 DIA.	11
B	191-194 DIA.	5

- UNLESS OTHERWISE SPECIFIED:
1. USE MATERIAL THICKNESS FOR MAXIMUM RADIUS ON ALL BENDS
  2. ALL ANGULAR BENDS 90 DEGREES
  3. REMOVE ALL BURRS AND SHARP EDGES

NOTES

1	RFTA-1	A5348
Q'TY./UNIT	MODEL USED ON	ASS'Y. NO.
SCALE 1/2:1	CODE A	

THE CONTENTS OF THIS DRAWING ARE THE EXCLUSIVE PROPERTY OF THE TECHNICAL MATERIEL CORP. ITS UNAUTHORIZED USE OR REPRODUCTION IN WHOLE OR IN PART IS STRICTLY FORBIDDEN.

5	1	NT 129-632-4	NUT, PLAIN, SPLINE	B
REQ'D.	ITEM	PART NUMBER	DESCRIPTION	SYMBOL

F. BUDETTI LIST OF MATERIAL

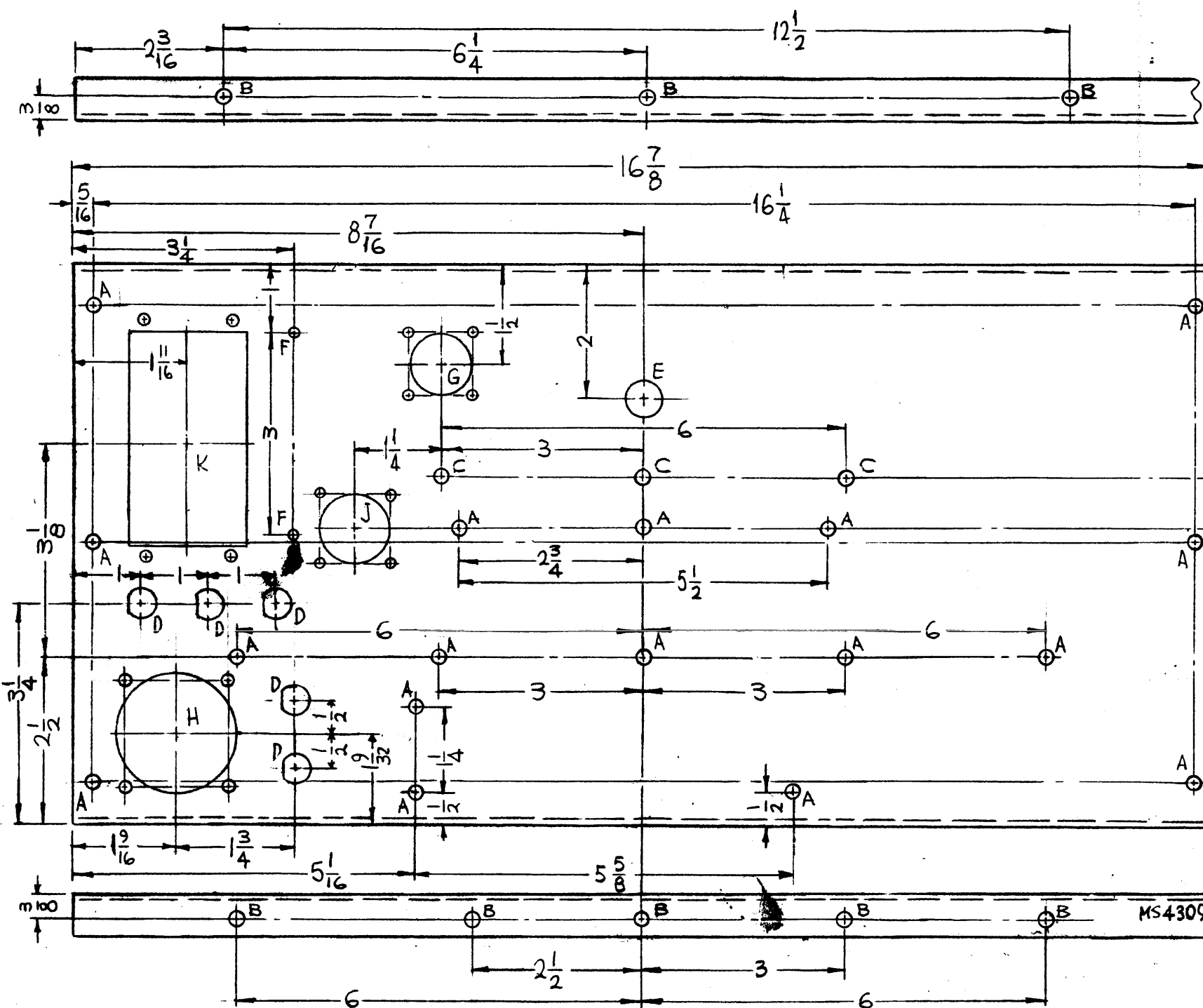
MATERIAL .081 THICK ALUMINUM 5052-H32

FINISH S404 YELLOW IRIDITE

TITLE PLATE, LEFT SIDE

THE TECHNICAL MATERIEL CORP. MAMARONECK, NEW YORK

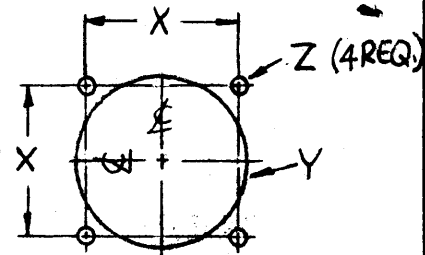
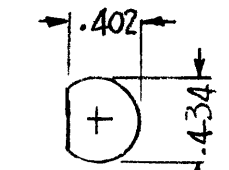
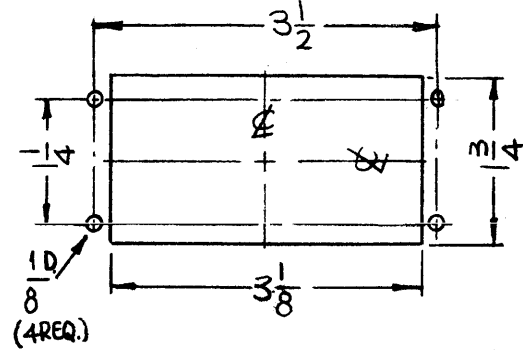
UNLESS OTHERWISE SPECIFIED DIMENSIONS ARE IN INCHES AND INCLUDE CHEMICALLY APPLIED OR PLATED FINISHES	DRAWN SRG	DATE 12-10-64	FINAL APPROVAL	DATE 4/7/66
DECIMALS .X ± .05 .XX ± .01 .XXX ± .005	CHECKED JCF	DATE 4-5-66	MS4308	Ø
FRACTIONS ± 1/64 ANGLES ± 0° 30'	ELECT. DES. JPH	DATE 4-7-66		
TOLERANCES	MECH. DES. JPH	DATE 4/12/66	SHEET	REV. LTR.



REVISIONS					
SYM	DESCRIPTION	DATE	E.M.N. NO.	DRAFT	CHKD APPD
X	EXPERIMENTAL RELEASE	12-21-64	X	SRG	
X1	COMPLETELY REVISED	1-12-65	X1	SRG	
X2	1.9/16 DIM WAS 2-1/2, 0 HOLES WERE 9/32 C HOLES	1-18-65	X2	SRG	
X3	L HOLES ADDED	1-26-65	X3	SRG	
X4	B HOLES ON TOP LIP WERE FASTENERS, 5/16 WAS 9/32	1-26-65	X4	SRG	
X5	3/8 DIM WAS 3-3/8	1-10-65	X5	SRG	
X6	1 A HOLE ADDED	6-29-65	X6	SRG	
X7	"D" HOLES WERE 7/16 DIA	7-26-65	X7	SRG	
X8	A HOLES WERE 3/16 DIA., 1/2" TO "A" HOLE WAS 1"	8-31-65	X8	SRG	
Ø	ORIGINAL RELEASE FOR PRODUCTION	6.7.66	Ø	GHW	

HOLES	DESCRIPTION	REQ
A	13/64 DIA	17
B	.191-.194 DIA.	8
C	11/64 DIA.	3
D	SEE DETAIL	5
E	1/2 DIA.	1
F	1/8 DIA.	2

DETAIL	X	Y DIA	Z DIA.	REQ
G	29/32	7/8	1/8	1
H	1-9/16	1-13/16	.147	1
J	1-1/16	1-1/8	.120	1



MARK TMC PART NO. 1/8 HIGH GOTHIC W/LATEST REV. LETTER.

REF: LD 1760

REQ'D.	ITEM	PART NUMBER	DESCRIPTION	SYMBOL
8	1	NT129-632-4	NUT, PLAIN, SPLINE	B

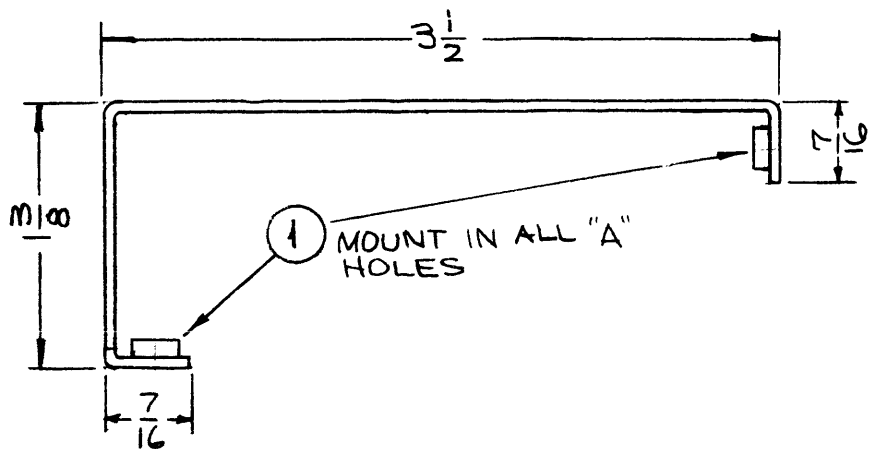
F. BUDETTI		LIST OF MATERIAL	
MATERIAL	.081 THICK ALUMINUM 5052-H32	THE TECHNICAL MATERIEL CORP. MAMARONECK, NEW YORK	
FINISH	S404 YELLOW IRIDITE	TITLE PLATE, CHASSIS, REAR	

UNLESS OTHERWISE SPECIFIED DIMENSIONS ARE IN INCHES AND INCLUDE CHEMICALLY APPLIED OR PLATED FINISHES		DRAWN	SRG	DATE	12-21-64	FINAL APPROVAL		DATE	6/7/66
DECIMALS	.X ± .05 .XX ± .01 .XXX ± .005	TOLERANCES	FRACTIONS	± 1/64 ANGLES ± 0° 30'	CHECKED				
ELECT. DES.		MECH. DES.	DATE	6/7/67	MS4309				
SHEET		REV. LTR.							

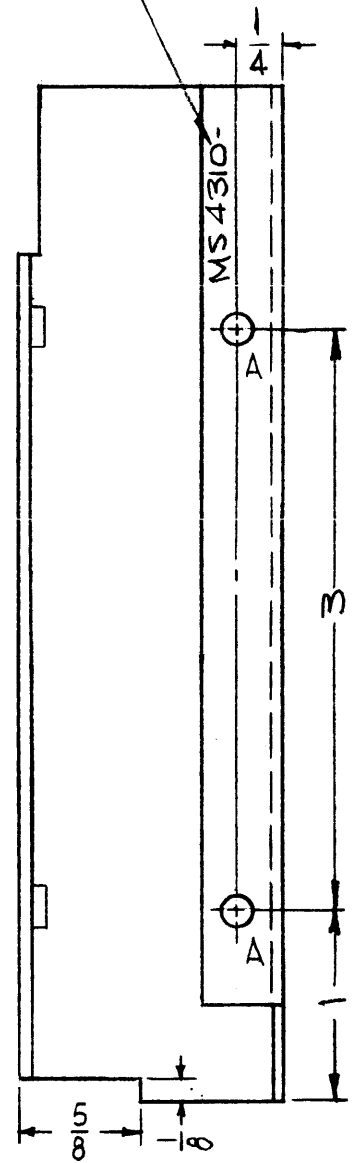
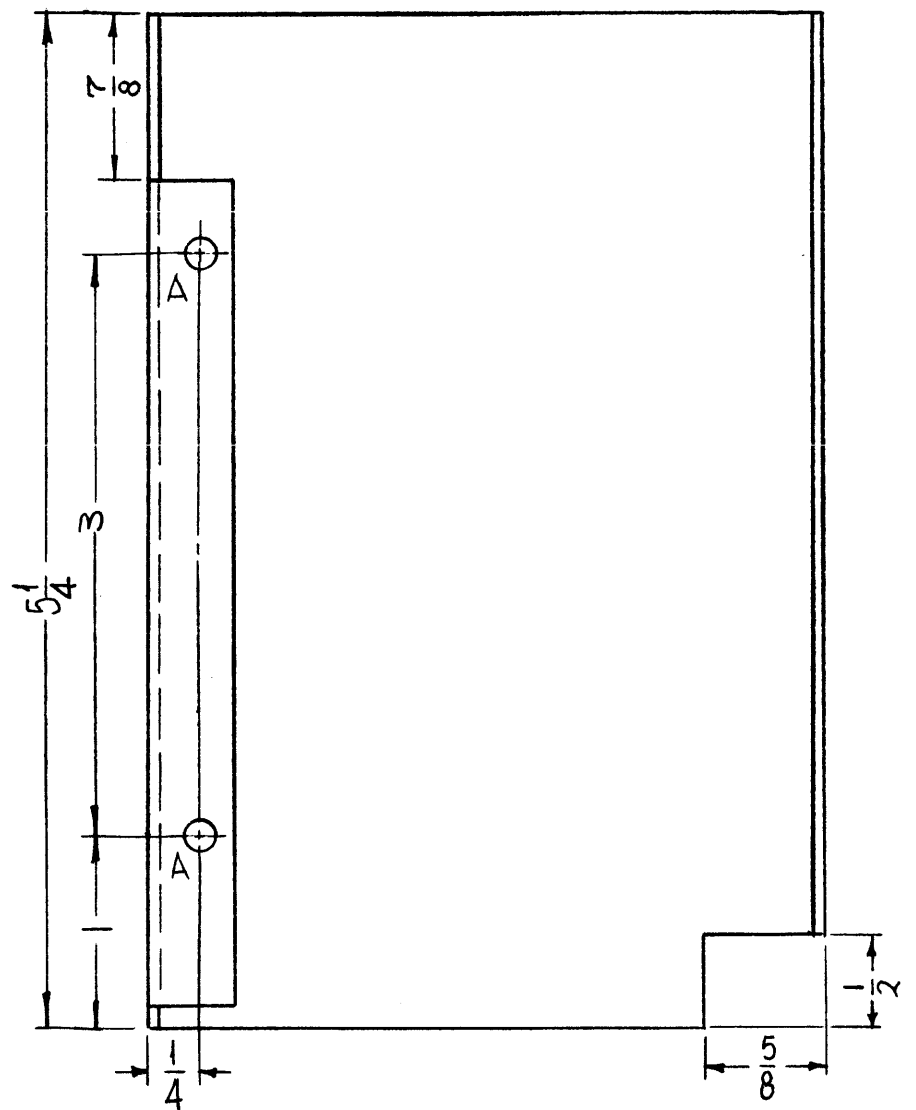
- UNLESS OTHERWISE SPECIFIED:
1. USE MATERIAL THICKNESS FOR MAXIMUM RADIUS ON ALL BENDS
  2. ALL ANGULAR BENDS 90 DEGREES
  3. REMOVE ALL BURRS AND SHARP EDGES
  4. MOUNT INSERTS AFTER FINISHING

NOTES

RFTA-1		ASSY. NO.
QTY./UNIT	MODEL USED ON	
SCALE	CODE	
1/2:1	A	
THE CONTENTS OF THIS DRAWING ARE THE EXCLUSIVE PROPERTY OF THE TECHNICAL MATERIEL CORP. ITS UNAUTHORIZED USE OR REPRODUCTION IN WHOLE OR IN PART IS STRICTLY FORBIDDEN.		



MARK TMC  
PART NO. 1/8 HIGH  
GOTHIC W/LATEST  
REV. LETTER.



MS4310

REVISIONS					
SYM	DESCRIPTION	DATE	E.M.N. NO.	DRAFT	CHKD APPD
X	EXP. RELEASE	1-25-65	X	SRG	
Ø	ORIGINAL RELEASE FOR PRODUCTION	6.23.66	-#	LW	HLO

**HOLES**  
A- .161-.164 DIA. (4REQ.)

UNLESS OTHERWISE SPECIFIED:

1. USE MATERIAL THICKNESS FOR MAXIMUM RADIUS ON ALL BENDS
2. ALL ANGULAR BENDS 90 DEGREES
3. REMOVE ALL BURRS AND SHARP EDGES
4. MOUNT INSERTS AFTER FINISHING

4	1	NT129-440-3	NUT, PLAIN, SPLINE	
REQ'D.	ITEM	PART NUMBER	DESCRIPTION	SYMBOL

F. BUDETTI		LIST OF MATERIAL	
MATERIAL .054 THICK ALUMINUM 5052-H32		THE TECHNICAL MATERIEL CORP. MAMARONECK, NEW YORK	
FINISH 5404 YEL. IRIDITE		TITLE SHIELD, RF	

1	RFTA-1	
Q'TY./UNIT	MODEL USED ON	ASS'Y. NO.
1:1	A	

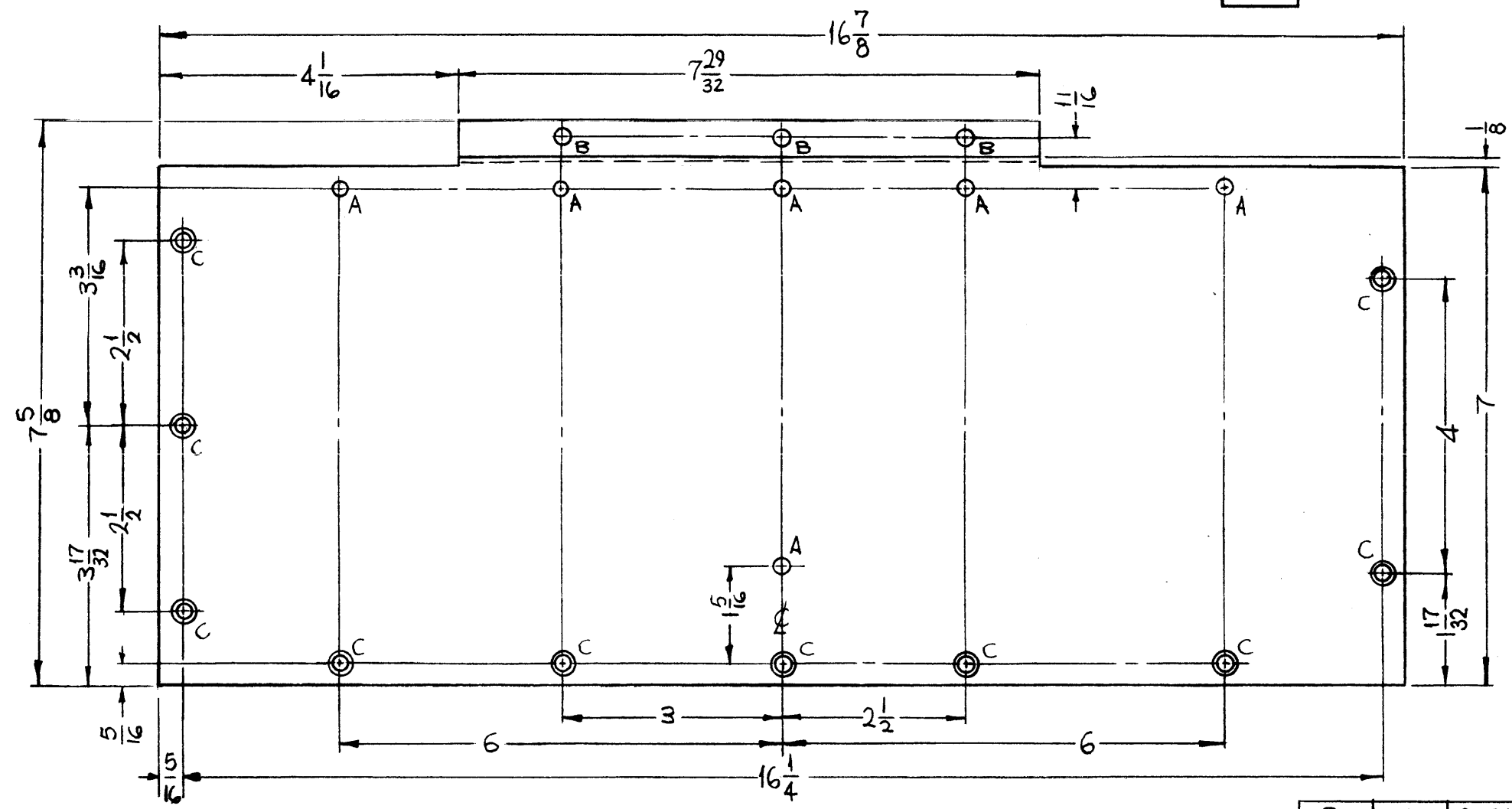
UNLESS OTHERWISE SPECIFIED DIMENSIONS ARE IN INCHES AND INCLUDE CHEMICALLY APPLIED OR PLATED FINISHES		DRAWN SRG	DATE 1-25-65	FINAL APPROVAL <i>[Signature]</i>	DATE 6/23/66
DECIMALS .X ± .05 .XX ± .01 .XXX ± .005		CHECKED <i>[Signature]</i>	DATE 6-20-66	MS4310	
FRACTIONS ± 1/64 ANGLES ± 0° 30'		ELECT. DES. <i>[Signature]</i>	DATE 6/22/66	Ø	
TOLERANCES		MECH. DES.	DATE	SHEET	

NOTES

THE CONTENTS OF THIS DRAWING ARE THE EXCLUSIVE PROPERTY OF THE TECHNICAL MATERIEL CORP. ITS UNAUTHORIZED USE OR REPRODUCTION IN WHOLE OR IN PART IS STRICTLY FORBIDDEN.

MS4311

REVISIONS					
SYM	DESCRIPTION	DATE	E.M.N. NO.	DRAFT	CHKD APPD
X	EXP. RELEASE	1-18-65	X	SRG	
X1	16 7/8 WAS 16 9/16, 14 1/4 WAS 14 5/16	1-28-65	X1	SRG	
X2	CHOLES WERE 3/16 DIA.	5-17-65	X2	SRG	FTB
Ø	ORIGINAL RELEASE FOR PRODUCTION	4-12-66	Ø	G.D.L.	HL



HOLES	DESCRIPTION	REQ.
A	3/16 DIA.	6
B	.191-194 DIA.	3
C	DR. 144 DIA. C'SINK 82° X .284 D.	10

① MOUNT IN ALL B HOLES

MARK TMC PART NO. (MS4311-) 1/8 HIGH GOTHIC W/LATEST REV. LETTER.

UNLESS OTHERWISE SPECIFIED:

1. USE MATERIAL THICKNESS FOR MAXIMUM RADIUS ON ALL BENDS
2. ALL ANGULAR BENDS 90 DEGREES
3. REMOVE ALL BURRS AND SHARP EDGES
4. MOUNT INSERTS AFTER FINISHING

NOTES

1	RFTA-1	A5348
Q'TY./UNIT	MODEL USED ON	ASS'Y. NO.
SCALE	CODE	
1/2:1	A	

THE CONTENTS OF THIS DRAWING ARE THE EXCLUSIVE PROPERTY OF THE TECHNICAL MATERIEL CORP. ITS UNAUTHORIZED USE OR REPRODUCTION IN WHOLE OR IN PART IS STRICTLY FORBIDDEN.

3	1	NT 129-632-3	NUT, PLAIN, SPLINE	B
REQ'D.	ITEM	PART NUMBER	DESCRIPTION	SYMBOL

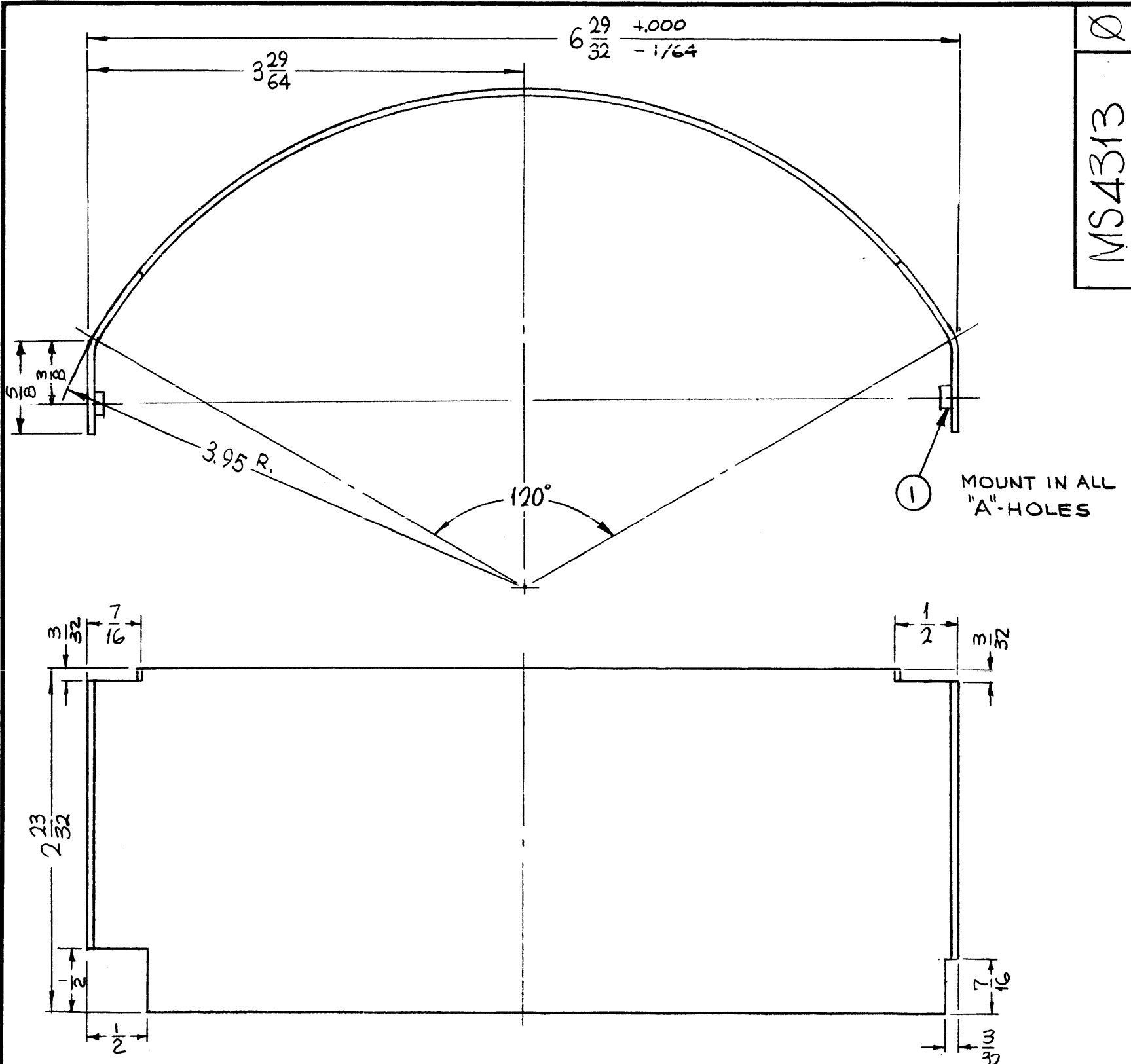
F. BUDETTI		LIST OF MATERIAL	
MATERIAL .054 THICK ALUMINUM 5052-H32		THE TECHNICAL MATERIEL CORP. MAMARONECK, NEW YORK	
FINISH S404 YEL. IRIDITE		TITLE COVER, CHASSIS, BOTTOM	

UNLESS OTHERWISE SPECIFIED DIMENSIONS ARE IN INCHES AND INCLUDE CHEMICALLY APPLIED OR PLATED FINISHES		DRAWN	DATE	FINAL APPROVAL	DATE	
DECIMALS .X ± .05 .XX ± .01 .XXX ± .05		SRG	1-18-65	<i>[Signature]</i>	4/7/66	
FRACTIONS ± 1/64 ANGLES ± 0° 30'		CHECKED	DATE			
TOLERANCES		<i>[Signature]</i>	4/5/66	MS4311	Ø	
		ELECT. DES.	DATE			
		MECH. DES.	DATE			
		<i>[Signature]</i>				

ML *[Signature]* 4/12/66

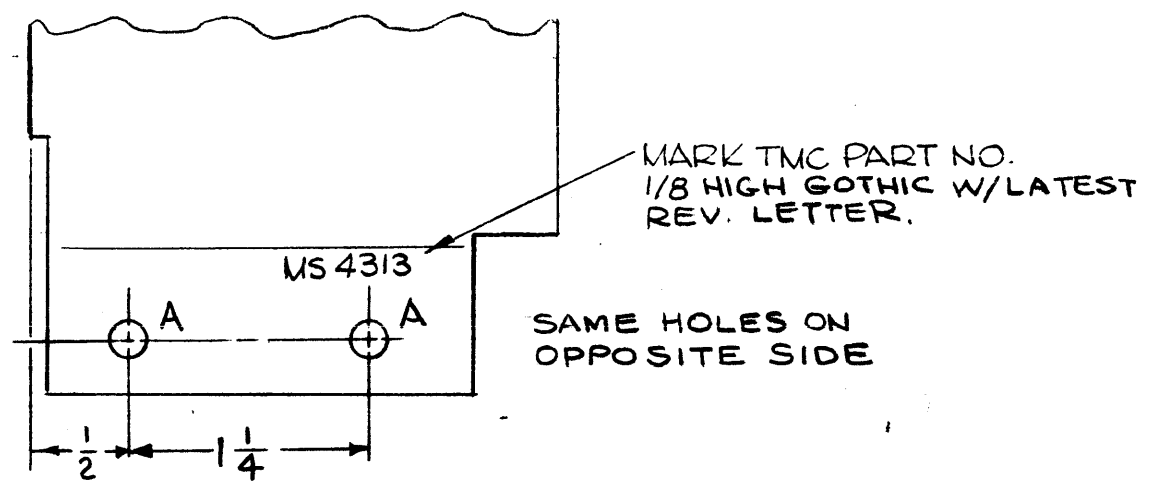






MS4313

REVISIONS					
SYM	DESCRIPTION	DATE	E.M.N. NO.	DRAFT	CHKD APPD
X	EXP. RELEASE	12-31-64	X	SRG	
X <sub>1</sub>	PICTORIAL REVISED	1-6-65	X <sub>1</sub>	SRB	
Ø	ORIGINAL RELEASE FOR PRODUCTION	6-7-66	Ø	WVW	file



HOLES	DESCRIPTION	REQ.
A	.191-.194 DIA.	4

- UNLESS OTHERWISE SPECIFIED:**
- USE MATERIAL THICKNESS FOR MAXIMUM RADIUS ON ALL BENDS
  - REMOVE ALL BURRS AND SHARP EDGES
  - MOUNT INSERTS AFTER FINISHING

**NOTES**

1	RFTA-1	
Q'TY./UNIT	MODEL USED ON	ASS'Y. NO.
SCALE	CODE	
1:1	A	

THE CONTENTS OF THIS DRAWING ARE THE EXCLUSIVE PROPERTY OF THE TECHNICAL MATERIEL CORP. ITS UNAUTHORIZED USE OR REPRODUCTION IN WHOLE OR IN PART IS STRICTLY FORBIDDEN.

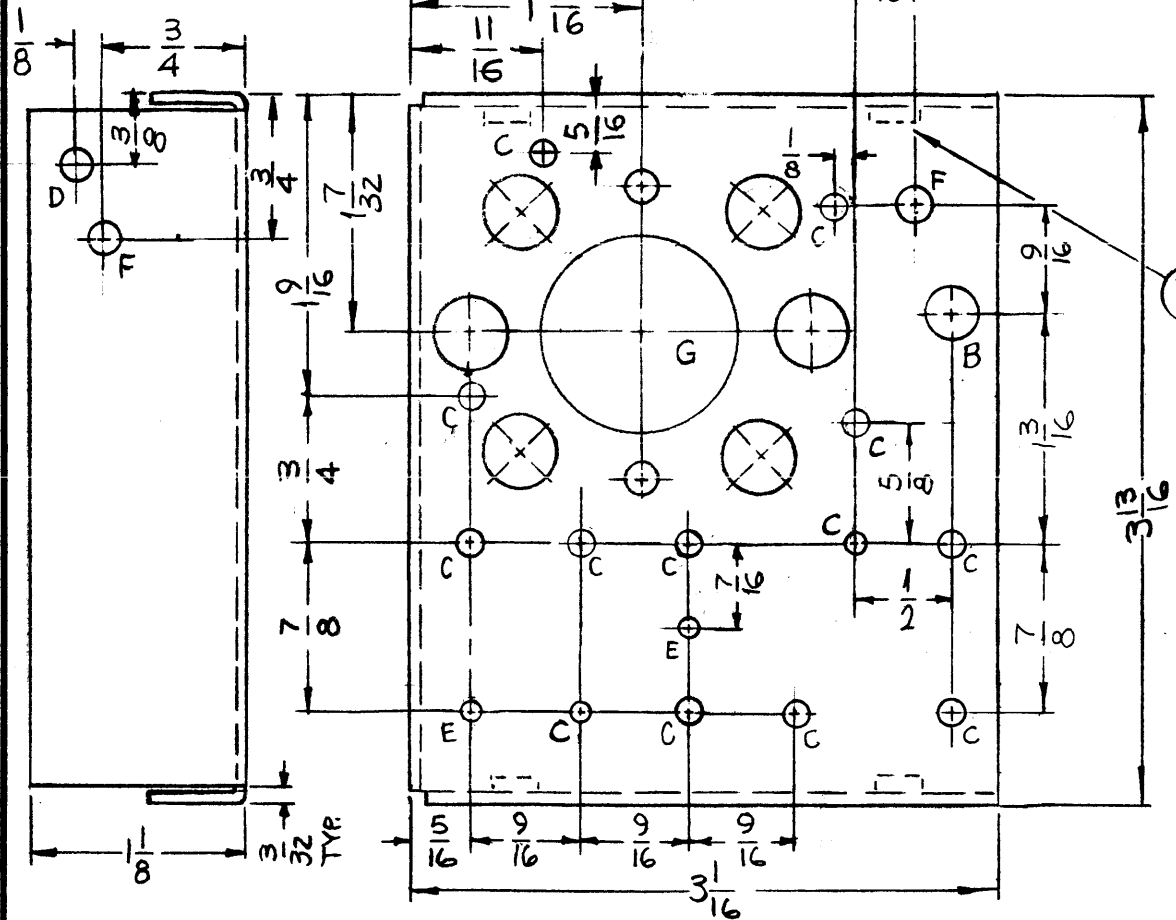
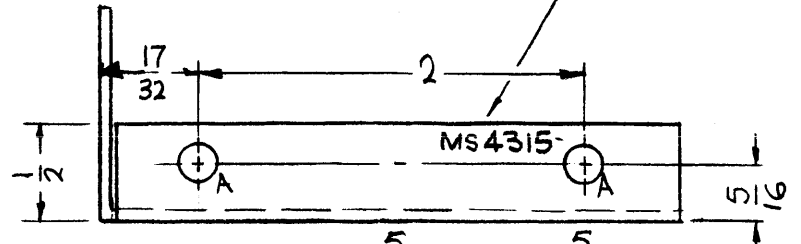
4	1	NT 129-632-4	NUT, PLAIN, SPLINE	A
REQ'D.	ITEM	PART NUMBER	DESCRIPTION	SYMBOL
<b>F. BUDETTI LIST OF MATERIAL</b>				
MATERIAL .064 ALUMINUM 5052-H32			THE TECHNICAL MATERIEL CORP. MAMARONECK, NEW YORK	
FINISH S404 YELLOW IRIDITE			TITLE BAFFLE, AIR	
UNLESS OTHERWISE SPECIFIED DIMENSIONS ARE IN INCHES AND INCLUDE CHEMICALLY APPLIED OR PLATED FINISHES			DRAWN SRG	DATE 12-31-64
DECIMALS .X ± .05 .XX ± .01 .XXX ± .005			CHECKED SRB	DATE
FRACTIONS ± 1/64 ANGLES ± 0° 30'			ELECT. DES. SRB	DATE
TOLERANCES			MECH. DES. SRB	DATE
			FINAL APPROVAL MS4313	
			SHEET	
			REV. LTR.	

MS4315

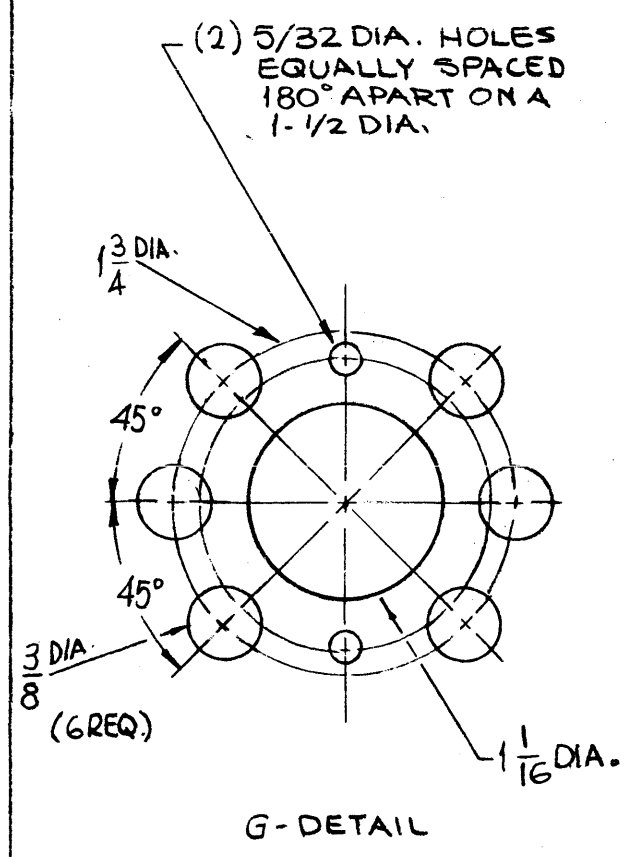
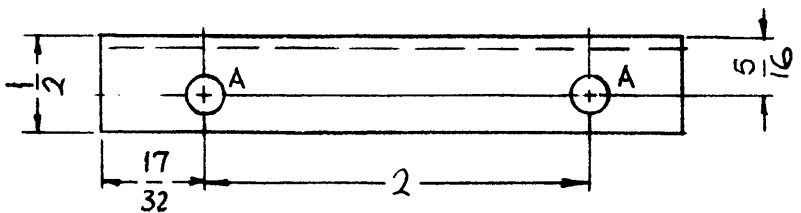
REVISIONS

SYM	DESCRIPTION	DATE	E.M.N. NO.	DRAFT	CHKD	APPD
X	EXP. RELEASE	12-8-64	X	SRG		
X1	B,C,D,E,F HOLES ADDED, 1-1/8 LIP ADDED	1-11-65	X1	SRG		
X2	3/8 HOLES WERE 1/4, E HOLES DIM 1/2 WAS 9/16, E HOLE MOVED	1-13-65	X2	SRG		
X3	B HOLE WAS 17/64	1-18-65	X3	SRG		
X4	5 C HOLES WERE C'SINK, 2C ADDED, H F J DELETED	6-8-65	X4	SRG		
X5	2 C HOLES WERE E HOLES - ONE C HOLE ADDED ONE F HOLE ADDED, ONE D HOLE RELOC, ON G DETAIL 1/16 WAS 1	7-9-65	X5	GDL		
Ø	ORIGINAL RELEASE FOR PRODUCTION	6.7.66	Ø	UW		

MARK TMC PART NO. 1/8 HIGH GOTHIC W/LATEST REV. LETTER.



① MOUNT IN ALL 'A' HOLES.



HOLES	DESCRIPTION	REQ.
A	.191-.194 DIA.	4
B	5/16 DIA.	1
C	1/8 DIA.	13
D	.161 ± .002	1
E	3/32 DIA.	2
F	11/64 DIA.	2
G	SEE DETAIL	1

- UNLESS OTHERWISE SPECIFIED:
1. USE MATERIAL THICKNESS FOR MAXIMUM RADIUS ON ALL BENDS
  2. ALL ANGULAR BENDS 90 DEGREES
  3. REMOVE ALL BURRS AND SHARP EDGES
  4. MOUNT INSERTS AFTER FINISHING

4	1	NT129-632-4	NUT, PLAIN, SPLINE	A
REQ'D.	ITEM	PART NUMBER	DESCRIPTION	SYMBOL

F. BUDETTI LIST OF MATERIAL

MATERIAL: .064 THICK ALUMINUM 5052-H32

FINISH: SA04 YELLOW IRIDITE

TITLE: CHASSIS, DRIVER

THE TECHNICAL MATERIEL CORP. MAMARONECK, NEW YORK

UNLESS OTHERWISE SPECIFIED DIMENSIONS ARE IN INCHES AND INCLUDE CHEMICALLY APPLIED OR PLATED FINISHES		DRAWN: SRG	DATE: 12-8-64	FINAL APPROVAL: [Signature]	DATE: 6/7/66
DECIMALS: .X ± .05, .XX ± .01, .XXX ± .005		CHECKED: [Signature]	DATE:	MS4315	
FRACTIONS: ± 1/64, ANGLES: ± 0° 30'		ELECT. DES.:	DATE:	SHEET	
TOLERANCES:		MECH. DES.:	DATE:	REV. LTR.	

NOTES

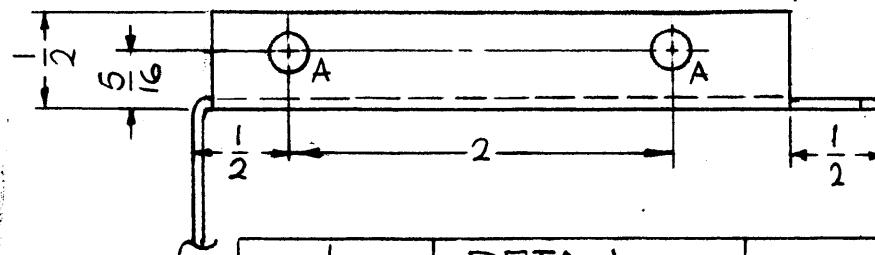
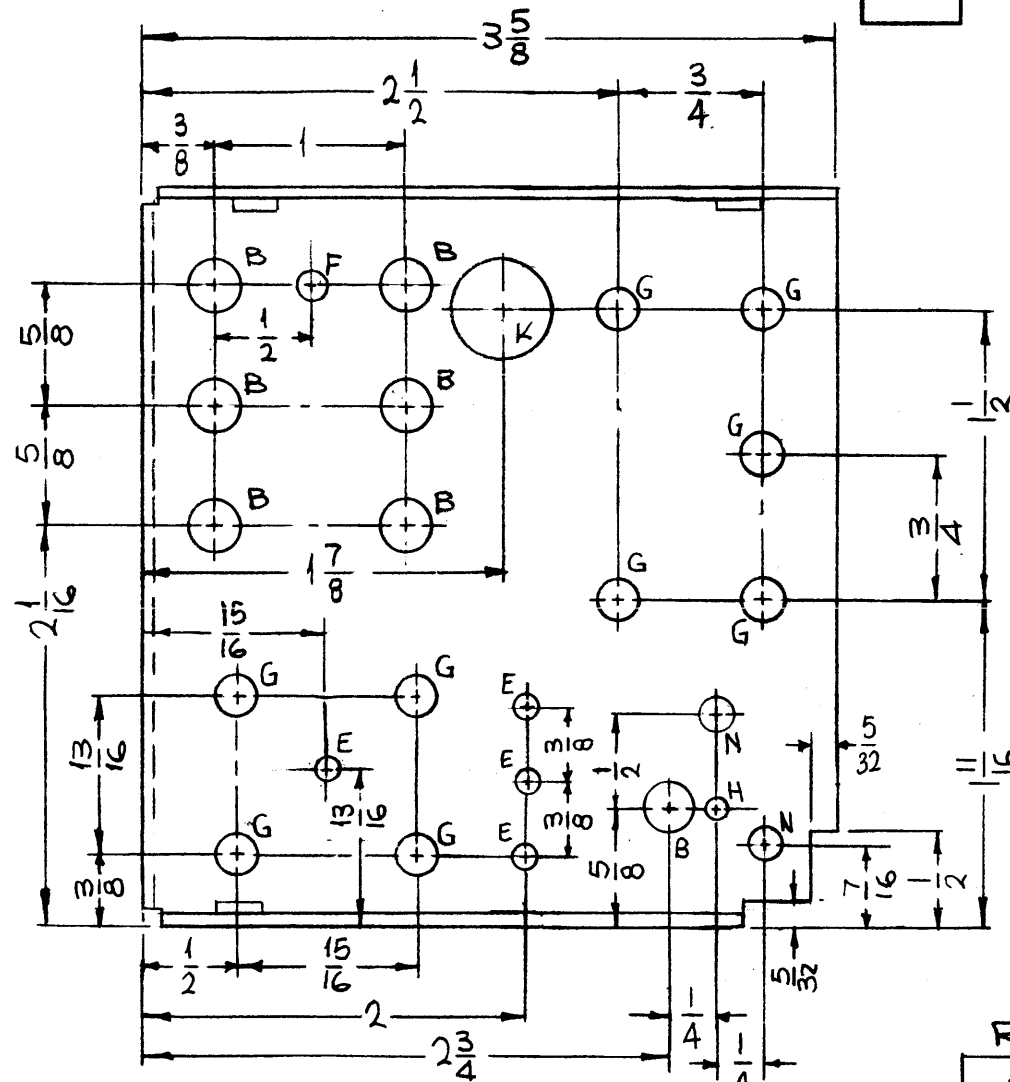
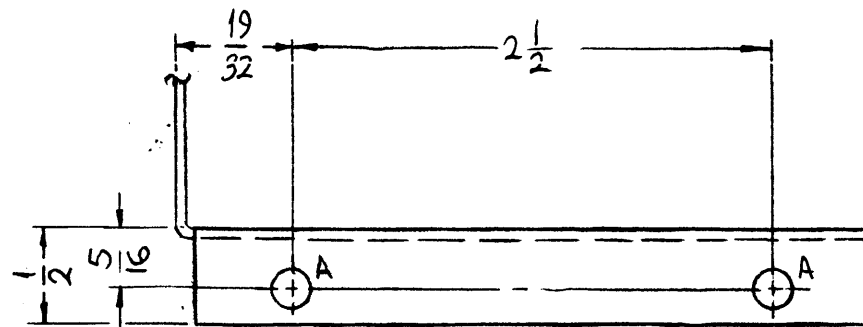
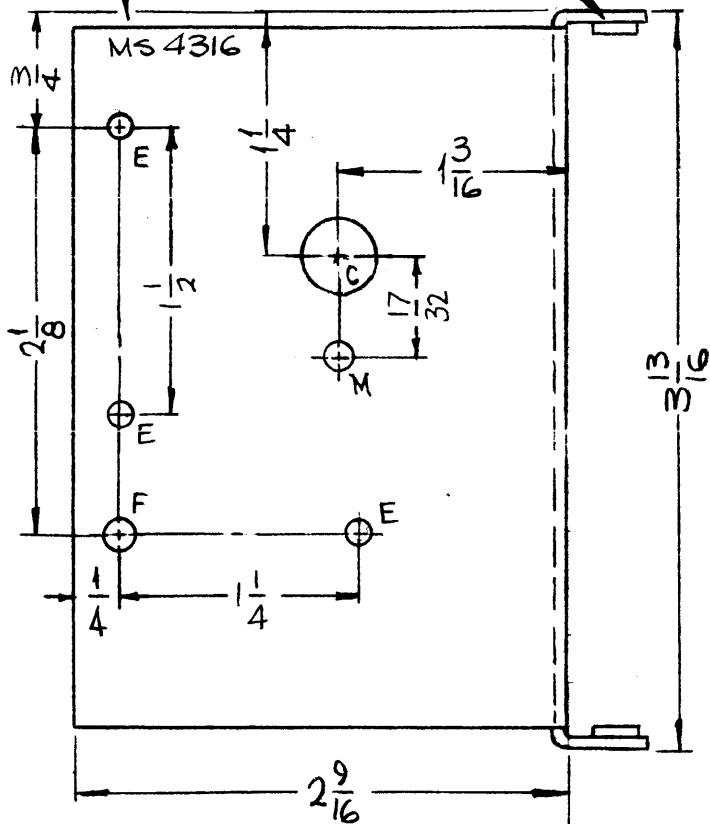
THE CONTENTS OF THIS DRAWING ARE THE EXCLUSIVE PROPERTY OF THE TECHNICAL MATERIEL CORP. ITS UNAUTHORIZED USE OR REPRODUCTION IN WHOLE OR IN PART IS STRICTLY FORBIDDEN.

1	RFTA-1	
QTY./UNIT	MODEL USED ON	ASS'Y. NO.
1	A	

REF: LD 1766

MARK TMC PART NO.  
1/8 HIGH GOTHIC W/LATEST  
REV. LETTER.

MOUNT IN  
ALL "A"  
HOLES



MS4316

REVISIONS

SYM	DESCRIPTION	DATE	E.M.N. NO.	DRAFT	CHKD	APPD
X	EXPERIMENTAL RELEASE	12-9-64	X	SRG		
X1	HOLES E, F, G, H, J, K ADDED	1-7-65	X1	SRG		
X2	L HOLE WAS J	1-13-65	X2	SRG		
X3	2 V4 WAS 2, 1 1/16 WAS 1 5/16, 1 B HOLE ADDED, M HOLE ADDED	1-18-65	X3	SRG		
X4	1B, 1H, 1F, 2E HOLES RELOCATED, 5E, 2N HOLES ADDED TUBE SOCKET DELETED, C & M HOLE RELOCATED 1J, C'S FOR 440, 1L C'S FOR 3-48 HOLES DELETED	6-7-65	X4	SRG	ker	
Ø	ORIGINAL RELEASE FOR PRODUCTION	6.7.66	Ø	lwo		file

HOLES	DESCRIPTION	REQ.
A	.191-.194 DIA.	4
B	1/4 DIA.	7
C	3/8 DIA.	1
D	DELETED	
E	1/8 DIA.	7
F	.158 ± .002	2
G	13/64 DIA.	9
H	7/64 DIA.	1
J	DELETED	
K	1/2 DIA.	1
L	DELETED	
M	9/64 DIA.	1
N	#19 DRILL (.166)	2

UNLESS OTHERWISE SPECIFIED:

1. USE MATERIAL THICKNESS FOR MAXIMUM RADIUS ON ALL BENDS
2. ALL ANGULAR BENDS 90 DEGREES
3. REMOVE ALL BURRS AND SHARP EDGES
4. MOUNT INSERTS AFTER FINISHING

NOTES

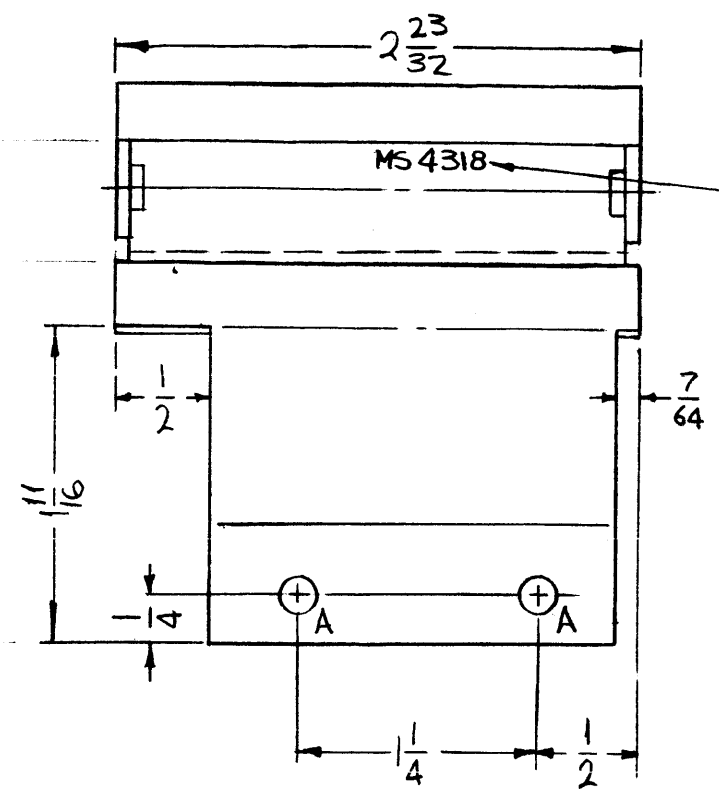
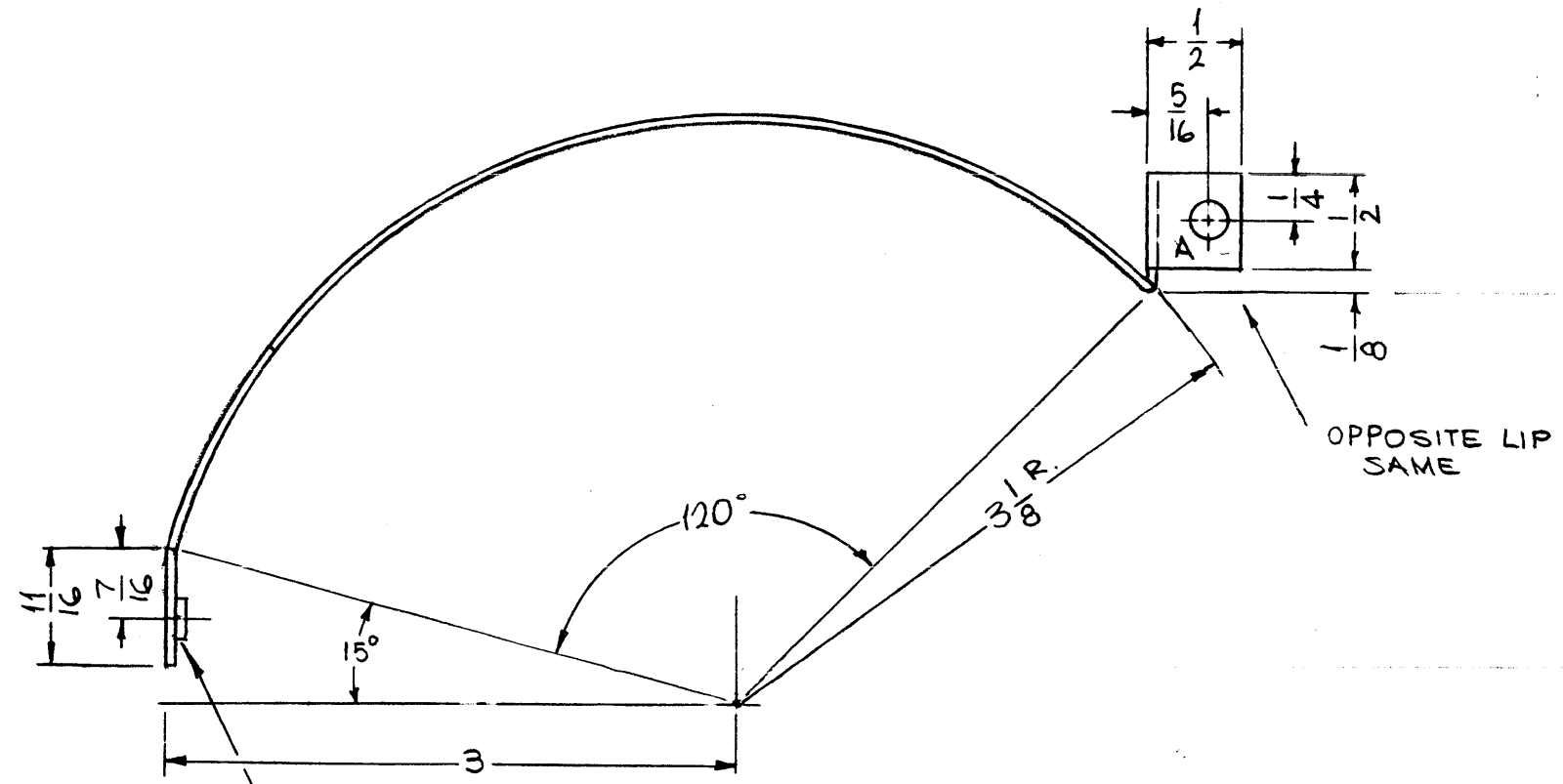
1		RFTA-1	
QTY./UNIT	MODEL USED ON		ASS'Y. NO.
SCALE	CODE		
1:1	A		
THE CONTENTS OF THIS DRAWING ARE THE EXCLUSIVE PROPERTY OF THE TECHNICAL MATERIEL CORP. ITS UNAUTHORIZED USE OR REPRODUCTION IN WHOLE OR IN PART IS STRICTLY FORBIDDEN.			

REF: LD 1763

4	1	NT129-632-4	NUT, PLAIN, SPLINE	A
REQ'D.	ITEM	PART NUMBER	DESCRIPTION	SYMBOL
F. BUDETTI LIST OF MATERIAL				
MATERIAL .064 THICK ALUMINUM 5052-H 32			THE TECHNICAL MATERIEL CORP. MAMARONECK, NEW YORK	
FINISH S404 YELLOW IRIDITE			TITLE CHASSIS, SWITCH MTG.	
UNLESS OTHERWISE SPECIFIED DIMENSIONS ARE IN INCHES AND INCLUDE CHEMICALLY APPLIED OR PLATED FINISHES			DRAWN SRG	DATE 12-9-64
DECIMALS .X ± .05 .XX ± .01 .XXX ± .005			CHECKED [Signature]	DATE
FRACTIONS ± 1/64 ANGLES ± 0° 30'			ELECT. DES. [Signature]	DATE
TOLERANCES			MECH. DES. [Signature]	DATE
			FINAL APPROVAL [Signature] 4/7/66	
			MS4316	
			SHEET	
			REV. LTR.	



REVISIONS						
SYM	DESCRIPTION	DATE	F.M.N. NO.	DRAFT	CHKD	APPD
X	EXP. RELEASE	1-7-65	X	SRG		
X1	PICTORIAL REVISED	1-14-65	X1	SRG		
Ø	ORIGINAL RELEASE FOR PRODUCTION	6.7.66	Ø	LHW		LHW



MARK TMC PART NO. 1/8 HIGH GOTHIC W/LATEST REV. LETTER.

OPPOSITE LIP SAME

① MOUNT IN ALL A HOLES

HOLES:  
A ~ .191 -.194 DIA. — 4 REQ.

4	1	NT 129-632-4	NUT, PLAIN, SPLINE	A
REQ'D.	ITEM	PART NUMBER	DESCRIPTION	SYMBOL

F. BUDETTI		LIST OF MATERIAL	
MATERIAL .064 THICK ALUMINUM 5052-H32		THE TECHNICAL MATERIEL CORP. MAMARONECK, NEW YORK	
FINISH S404 YELLOW IRIDITE		TITLE BAFFLE, AIR	

1	RFTA-1	
Q'TY./UNIT	MODEL USED ON	ASS'Y. NO.
SCALE	CODE	
1:1	A	
THE CONTENTS OF THIS DRAWING ARE THE EXCLUSIVE PROPERTY OF THE TECHNICAL MATERIEL CORP. ITS UNAUTHORIZED USE OR REPRODUCTION IN WHOLE OR IN PART IS STRICTLY FORBIDDEN.		

UNLESS OTHERWISE SPECIFIED DIMENSIONS ARE IN INCHES AND INCLUDE CHEMICALLY APPLIED OR PLATED FINISHES

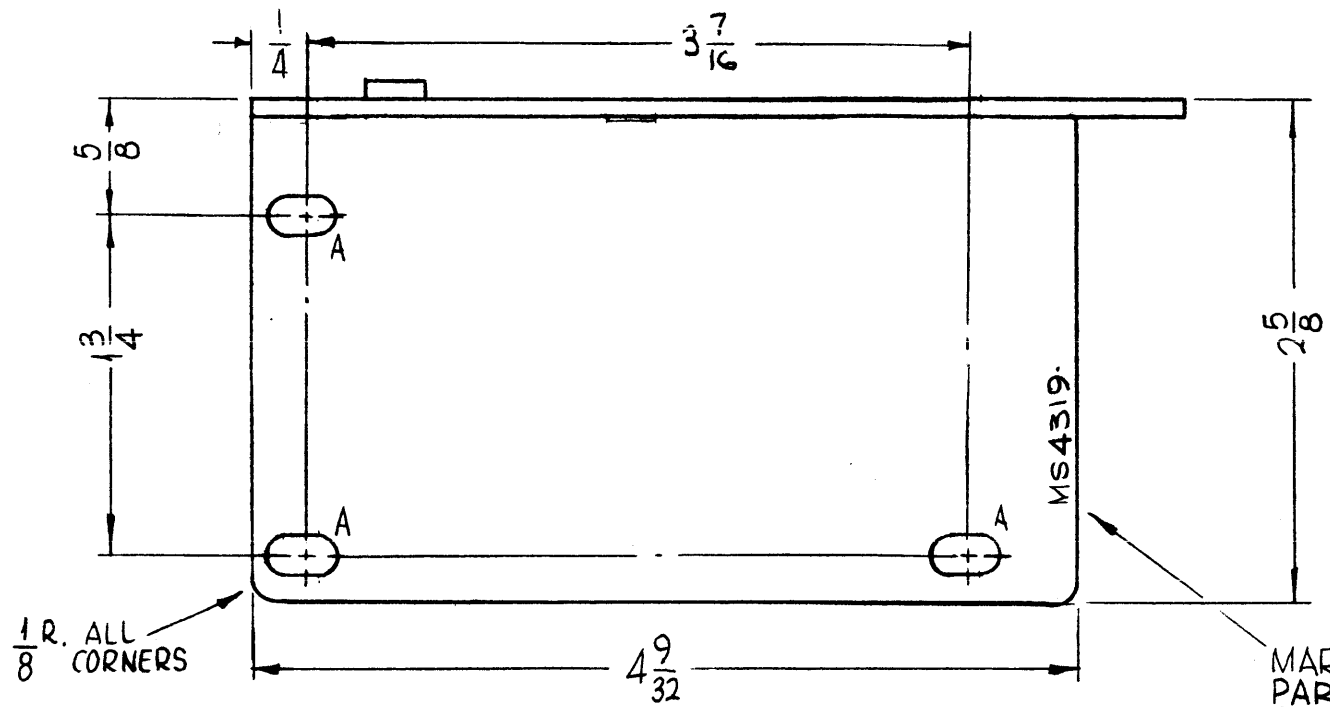
DECIMALS  
.X ± .05  
.XX ± .01  
.XXX ± .005

FRACTIONS  
± 1/64  
ANGLES  
± 0° 30'

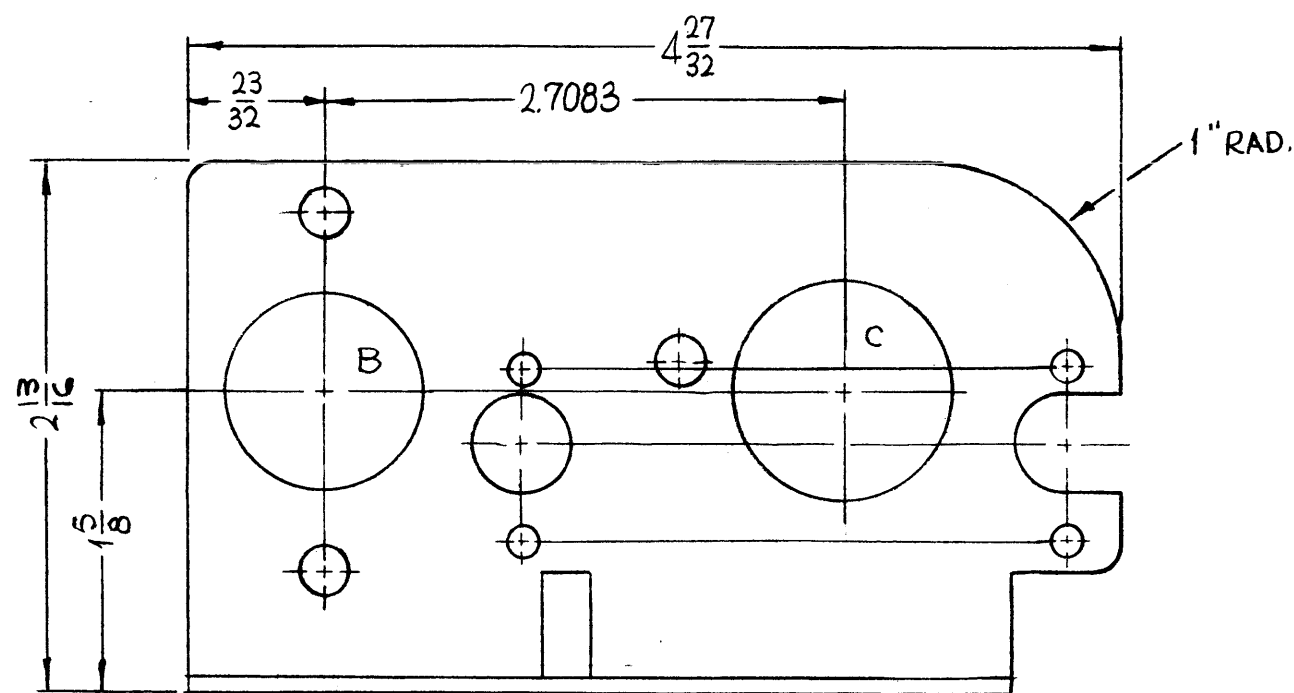
TOLERANCES

DRAWN	DATE	FINAL APPROVAL	DATE
SRG	1-7-65	[Signature]	6/7/66
CHECKED	DATE		
ELECT. DES.	DATE	MS4318	
MECH. DES.	DATE		
SHEET		REV. LTR.	

NOTES



MARK TMC  
PART NO. 1/8 HIGH  
GOTHIC W/LATEST  
REV. LETTER.

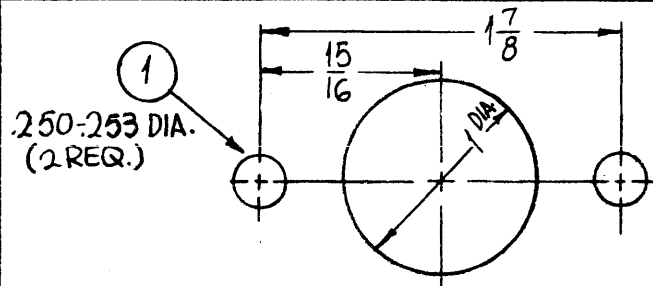


MS4319

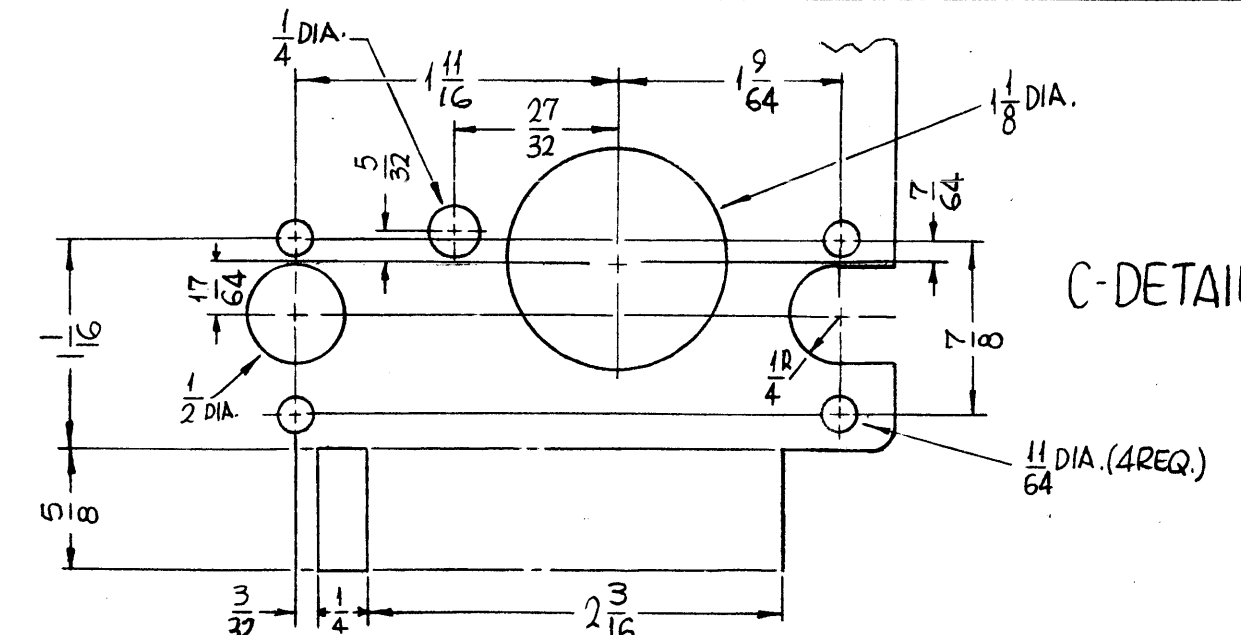
REVISIONS					
SYM	DESCRIPTION	DATE	E.M.N. NO.	DRAFT	CHKD APPD
X	EXPERIMENTAL RELEASE	12-2-64	X	SRG	
X <sub>1</sub>	NT REMOVED FROM A HOLES DIM. 11/32 WAS 1/2, 4.9/32 WAS 4 7/16, 23/32 WAS 7/8, 4.27/32 WAS 5	12-16-64	X <sub>1</sub>	SRG	
X <sub>2</sub>	2 NT ADDED TO B DETAIL, 1" RAD. ADDED	1-12-65	X <sub>2</sub>	SRG	
X <sub>3</sub>	1/4 WAS 11/32, SLOTS WERE 13/64 D., 2 13/16 WAS 2 3/4, 1 5/8 WAS 1 9/16	6-9-65	X <sub>3</sub>	SRG	
Ø	ORIGINAL RELEASE FOR PRODUCTION	6-23-66	-#	WHO	

HOLES

A- 3/16 X 3/8 SLOTS (3 REQ.)



B-DETAIL



C-DETAIL

2	1	NT 129-1032-4	NUT, PLAIN, SPLINE	B
REQ'D.	ITEM	PART NUMBER	DESCRIPTION	SYMBOL

F. BUDETTI LIST OF MATERIAL

MATERIAL	THE TECHNICAL MATERIEL CORP.
.081 THICK ALUMINUM 5052-H32	MAMARONECK, NEW YORK
FINISH	TITLE
S404 YELLOW IRIDITE	BRACKET, MOTOR, SWITCH MTG.

UNLESS OTHERWISE SPECIFIED DIMENSIONS ARE IN INCHES AND INCLUDE CHEMICALLY APPLIED OR PLATED FINISHES		DRAWN SRG		DATE 12-2-64		FINAL APPROVAL		DATE	
DECIMALS .X ± .05 .XX ± .01 .XXX ± .005		FRACTIONS ± 1/64 ANGLES ± 0° 30'		CHECKED SRG		DATE 6-20-66		DATE 6/23/66	
TOLERANCES		ELECT. DES. SRG		MECH. DES. SRG		MS4319		Ø	
						SHEET		REV. LTR.	

UNLESS OTHERWISE SPECIFIED:

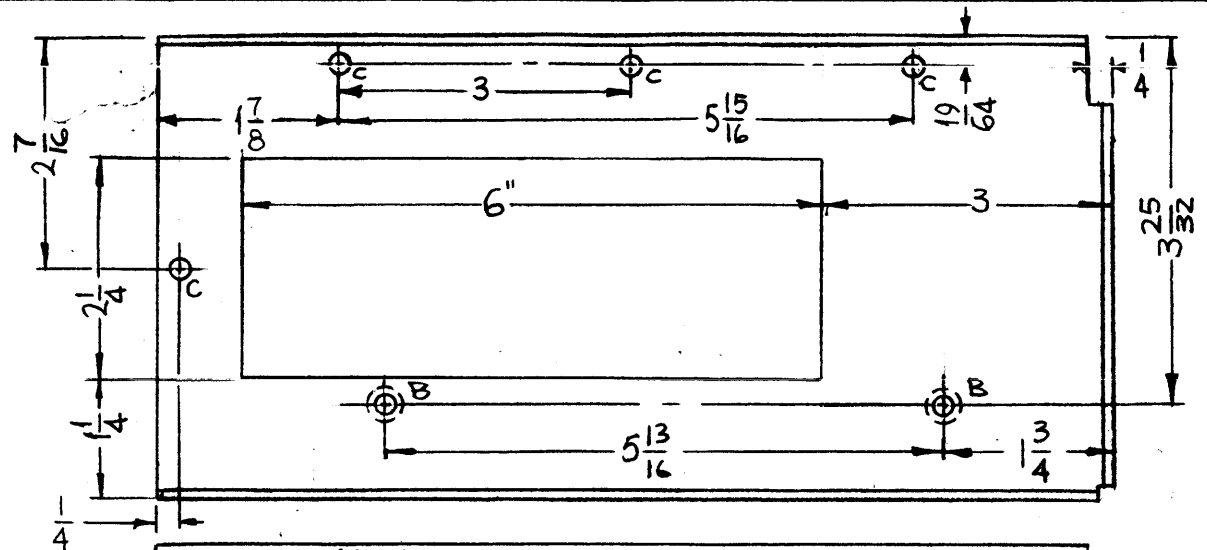
- USE MATERIAL THICKNESS FOR MAXIMUM RADIUS ON ALL BENDS
- ALL ANGULAR BENDS 90 DEGREES
- REMOVE ALL BURRS AND SHARP EDGES
- MOUNT INSERTS AFTER FINISHING

NOTES

1	RFTA-1	
Q'TY./UNIT	MODEL USED ON	ASS'Y. NO.
SCALE 1:1	CODE A	
THE CONTENTS OF THIS DRAWING ARE THE EXCLUSIVE PROPERTY OF THE TECHNICAL MATERIEL CORP. ITS UNAUTHORIZED USE OR REPRODUCTION IN WHOLE OR IN PART IS STRICTLY FORBIDDEN.		

REF: LD 1768.

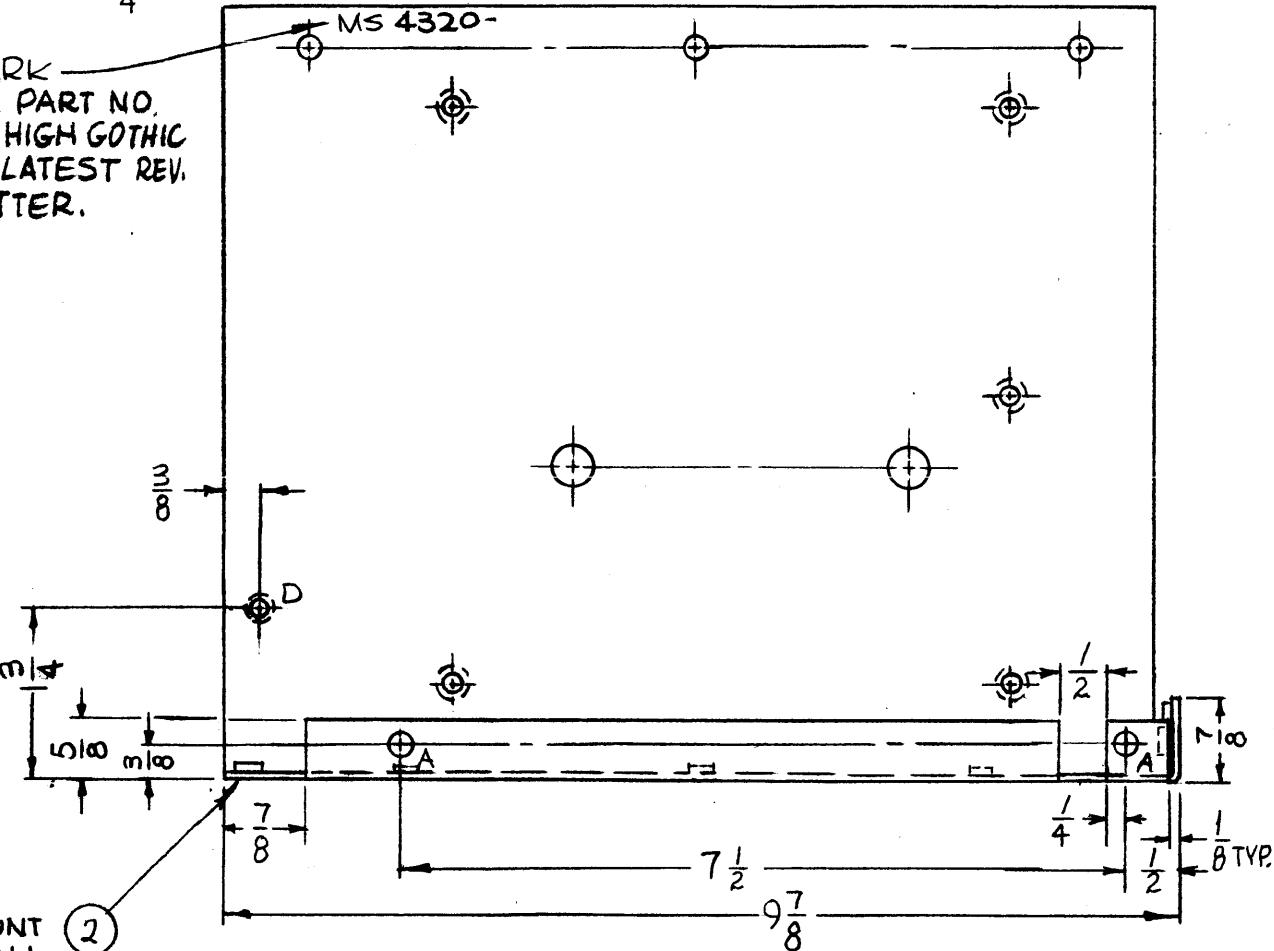




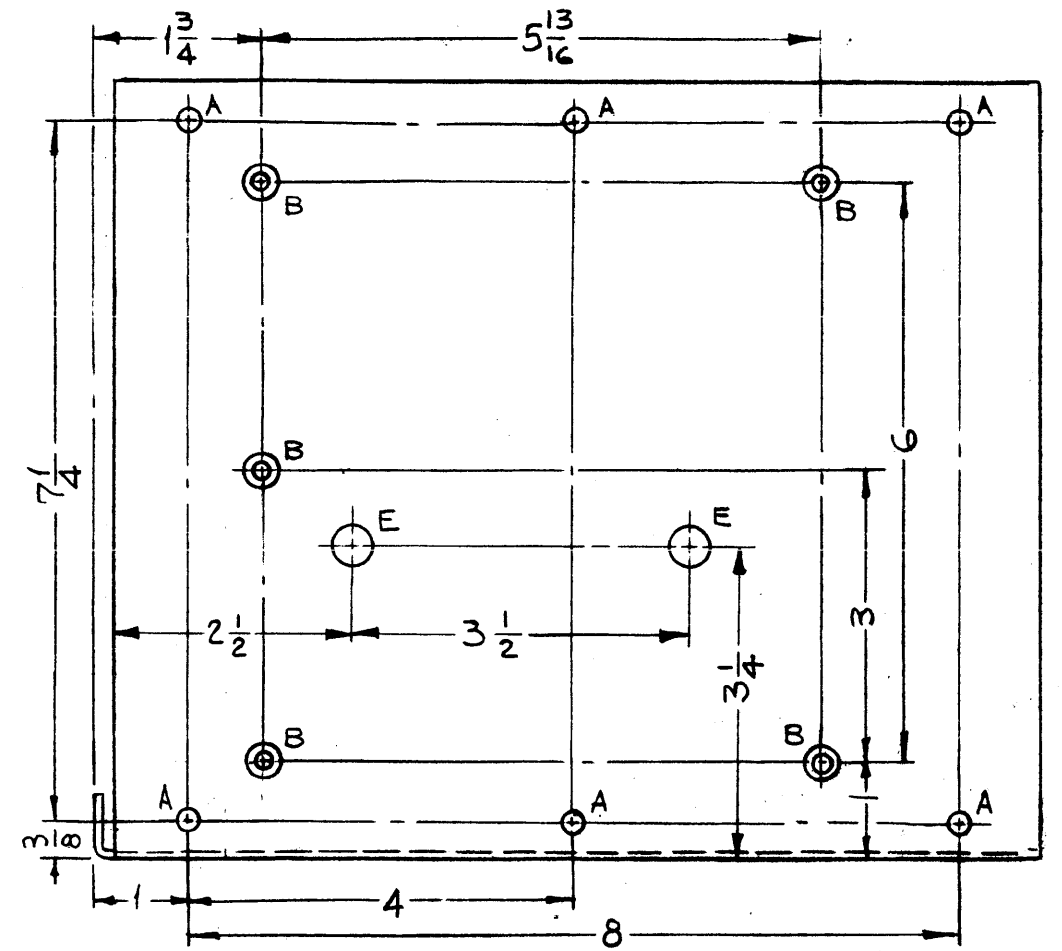
MS4320

REVISIONS					
SYM	DESCRIPTION	DATE	E.M.N. NO.	DRAFT	CHKD APPD
X	EXPERIMENTAL RELEASE	12-3-64	X	SRG	
X1	CUTOUT ENLARGED, DIM 7 WAS 8, CUT 1" OFF LIP, 2"A WERE 13/16	1-6-65	X1	SRG	
X2	C HOLES ADDED	1-18-65	X2	SRG	
X3	D HOLES ADDED	1-22-65	X3	SRG	
X4	7/8 LIP WAS 5/8 & HOLES RAISED 1/4	1-27-65	X4	SRG	
X5	2"E" HOLES ADDED	4-21-65	X5	JB	
X6	1/2 X 5/8 SLOT ADDED A HOLE DIM. ADJ. FR. 1 TO 1/2	5-12-65	X6	NO	
X7	1"D HOLE DELETED, LIP DELETED FROM FAR LEFT	9-14-65	X7	NO	
Ø	ORIGINAL RELEASE FOR PRODUCTION	6.23.66	Ø	WTD	

MARK TMC PART NO. 1/8 HIGH GOTHIC W/LATEST REV. LETTER.



MOUNT IN ALL "A" HOLES ①



MOUNT IN ALL C HOLES ②

HOLES	DESCRIPTION	REQ.
A	.221-.224 DIA.	10
B	DR. .169 DIA. C'SINK 82° X .337 DIA.	7
C	.191-.194 DIA.	4
D	DR. .144 DIA. C'SINK 82° X .284 DIA.	1
E	3/8 DIA.	2

- UNLESS OTHERWISE SPECIFIED:
- USE MATERIAL THICKNESS FOR MAXIMUM RADIUS ON ALL BENDS
  - ALL ANGULAR BENDS 90 DEGREES
  - REMOVE ALL BURRS AND SHARP EDGES
  - MOUNT INSERTS AFTER FINISHING

NOTES

1	RFTA-1	
QTY./UNIT	MODEL USED ON	ASSY. NO.
SCALE 1/2:1	CODE A	

THE CONTENTS OF THIS DRAWING ARE THE EXCLUSIVE PROPERTY OF THE TECHNICAL MATERIEL CORP. ITS UNAUTHORIZED USE OR REPRODUCTION IN WHOLE OR IN PART IS STRICTLY FORBIDDEN.

REQ'D.	ITEM	PART NUMBER	DESCRIPTION	SYMBOL
4	2	NT129-632-4	NUT, PLAIN, SPLINE	C
10	1	NT129-832-4	NUT, PLAIN, SPLINE	A

F. BUDETTI LIST OF MATERIAL

MATERIAL: .064 THICK ALUMINUM 5052-H32

FINISH: S404 YELLOW IRIDITE

UNLESS OTHERWISE SPECIFIED DIMENSIONS ARE IN INCHES AND INCLUDE CHEMICALLY APPLIED OR PLATED FINISHES

THE TECHNICAL MATERIEL CORP. MAMARONECK, NEW YORK

TITLE: BRACKET, BANDSWITCH, MTG.

DRAWN: SRG	DATE: 12-3-64	FINAL APPROVAL: [Signature]	DATE: 6/23/66
CHECKED: [Signature]	DATE: 6/20/66		
ELECT. DES. [Signature]	DATE: 6/22/66		
MECH. DES. [Signature]	DATE: [Signature]		

DECIMALS: .X ± .05, .XX ± .01, .XXX ± .005

FRACTIONS: ± 1/64, ANGLES: ± 0° 30'

TOLERANCES

MS4320

SHEET

REV. LTR.





NOTES

- 1. USE MATERIAL THICKNESS FOR MAXIMUM RADIUS ON ALL BENDS
- 2. ALL ANGULAR BENDS 90 DEGREES
- 3. REMOVE ALL BURRS AND SHARP EDGES

UNLESS OTHERWISE SPECIFIED:

QTY./UNIT	1	1	1
MODEL USED ON	KIT-215	AX-546	
ASBY. NO.			
SCALE	1:1	A	
THE CONTENTS OF THIS DRAWING ARE THE EXCLUSIVE PROPERTY OF THE TECHNICAL MATERIEL CORP. ITS UNAUTHORIZED USE OR REPRODUCTION IN WHOLE OR IN PART IS STRICTLY FORBIDDEN.			

REV. LTR.					
DATE	3/2/65	DATE	3/2/65	DATE	3/2/65
MECH. DES.		ELECTR.		DATE	3/2/65
REPROV. NO. 440H	MS4332	DATE	2-26-65	DATE	2-26-65
REVISIONS		DESCRIPTION		DATE	
SYMBOL		DESCRIPTION		DATE	
SYMBOL		DESCRIPTION		DATE	

REF. LD 1774			
RECD. ITEM		PART NUMBER	
F. BUDETTI			
LIST OF MATERIAL			

RECD. ITEM		PART NUMBER	
F. BUDETTI			
LIST OF MATERIAL			

RECD. ITEM		PART NUMBER	
F. BUDETTI			
LIST OF MATERIAL			

RECD. ITEM		PART NUMBER	
F. BUDETTI			
LIST OF MATERIAL			

RECD. ITEM		PART NUMBER	
F. BUDETTI			
LIST OF MATERIAL			

RECD. ITEM		PART NUMBER	
F. BUDETTI			
LIST OF MATERIAL			

RECD. ITEM		PART NUMBER	
F. BUDETTI			
LIST OF MATERIAL			

RECD. ITEM		PART NUMBER	
F. BUDETTI			
LIST OF MATERIAL			

RECD. ITEM		PART NUMBER	
F. BUDETTI			
LIST OF MATERIAL			

RECD. ITEM		PART NUMBER	
F. BUDETTI			
LIST OF MATERIAL			

RECD. ITEM		PART NUMBER	
F. BUDETTI			
LIST OF MATERIAL			

RECD. ITEM		PART NUMBER	
F. BUDETTI			
LIST OF MATERIAL			

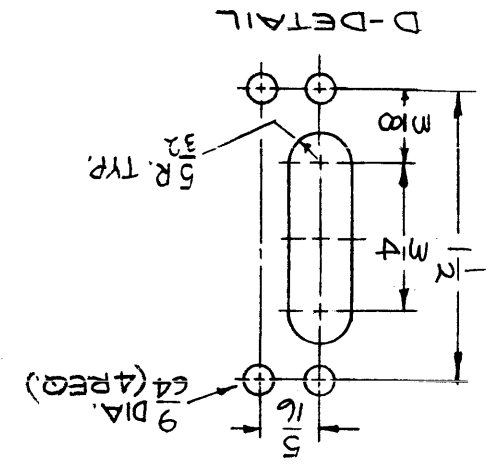
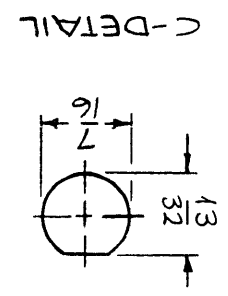
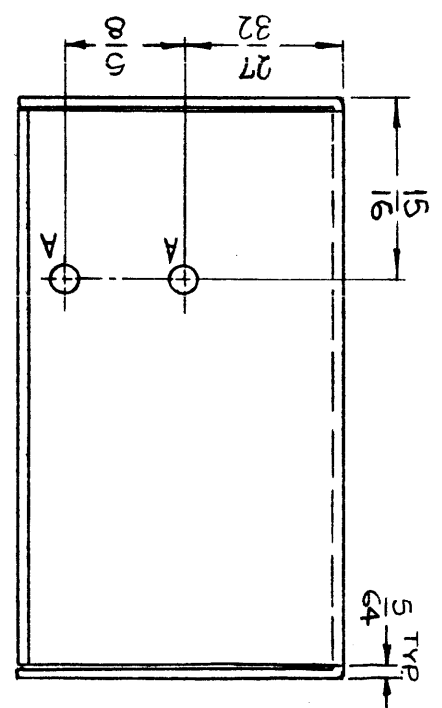
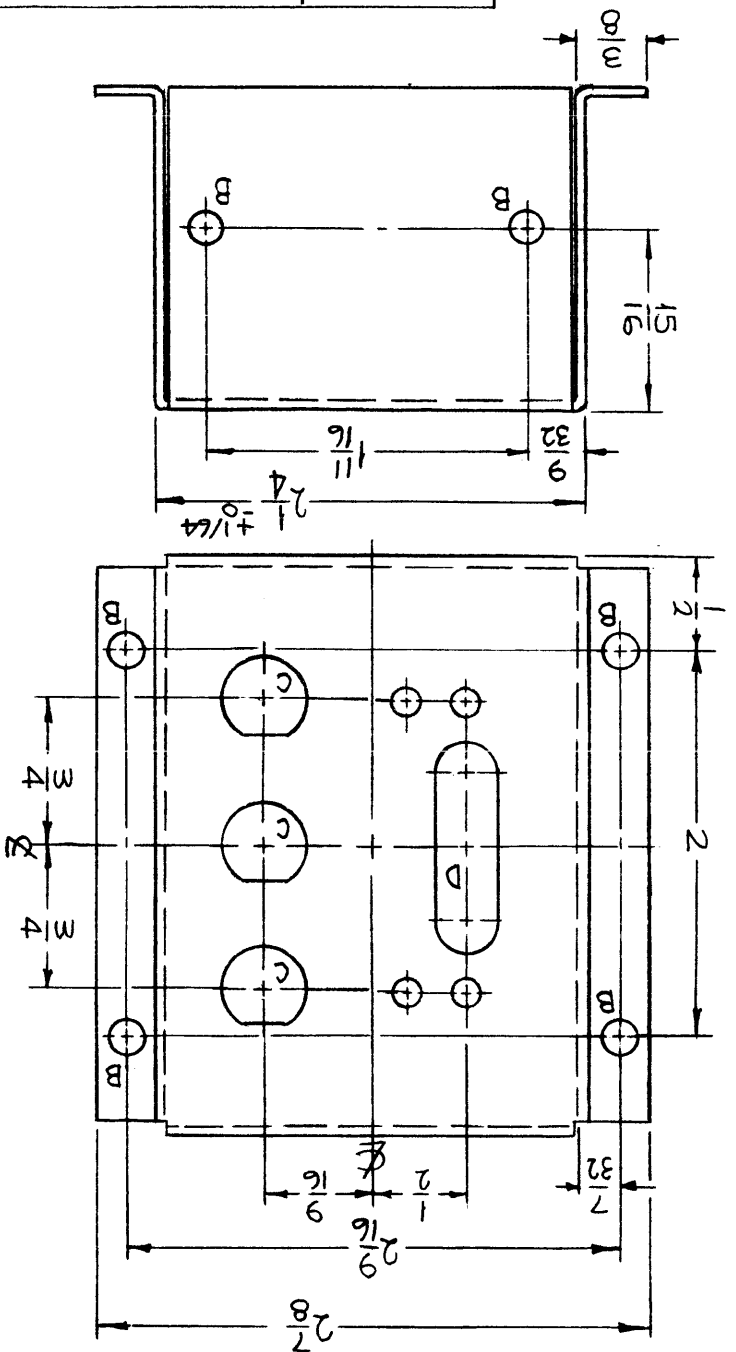
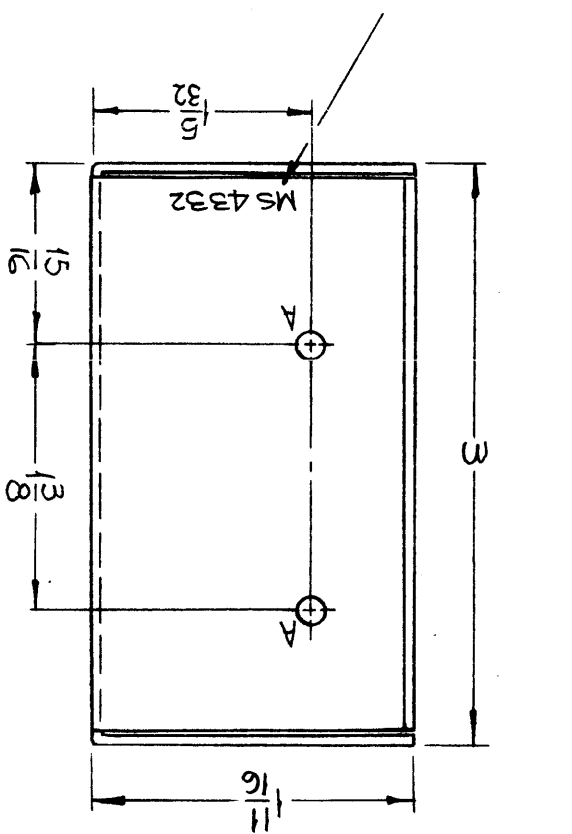
RECD. ITEM		PART NUMBER	
F. BUDETTI			
LIST OF MATERIAL			

RECD. ITEM		PART NUMBER	
F. BUDETTI			
LIST OF MATERIAL			

RECD. ITEM		PART NUMBER	
F. BUDETTI			
LIST OF MATERIAL			

RECD. ITEM		PART NUMBER	
F. BUDETTI			
LIST OF MATERIAL			

METAL STAMP TMC PART NO. 1/8 HIGH GOTHIC W/LATEST REV. LETTER.



HOLES	DESCRIPTION	REQ.
A	9/64 DIA.	4
B	11/64 DIA.	6
C	SEE DETAIL	3
D	SEE DETAIL	1

MS4332

REVISIONS

SYM	X	DESCRIPTION	DATE	E.M.N. NO.	DRAFT	CHKD	APPD
		EXP. RELEASE	2-26-65		SRG		
		ORIGINAL RELEASE FOR PRODUCTION	3-2-65				

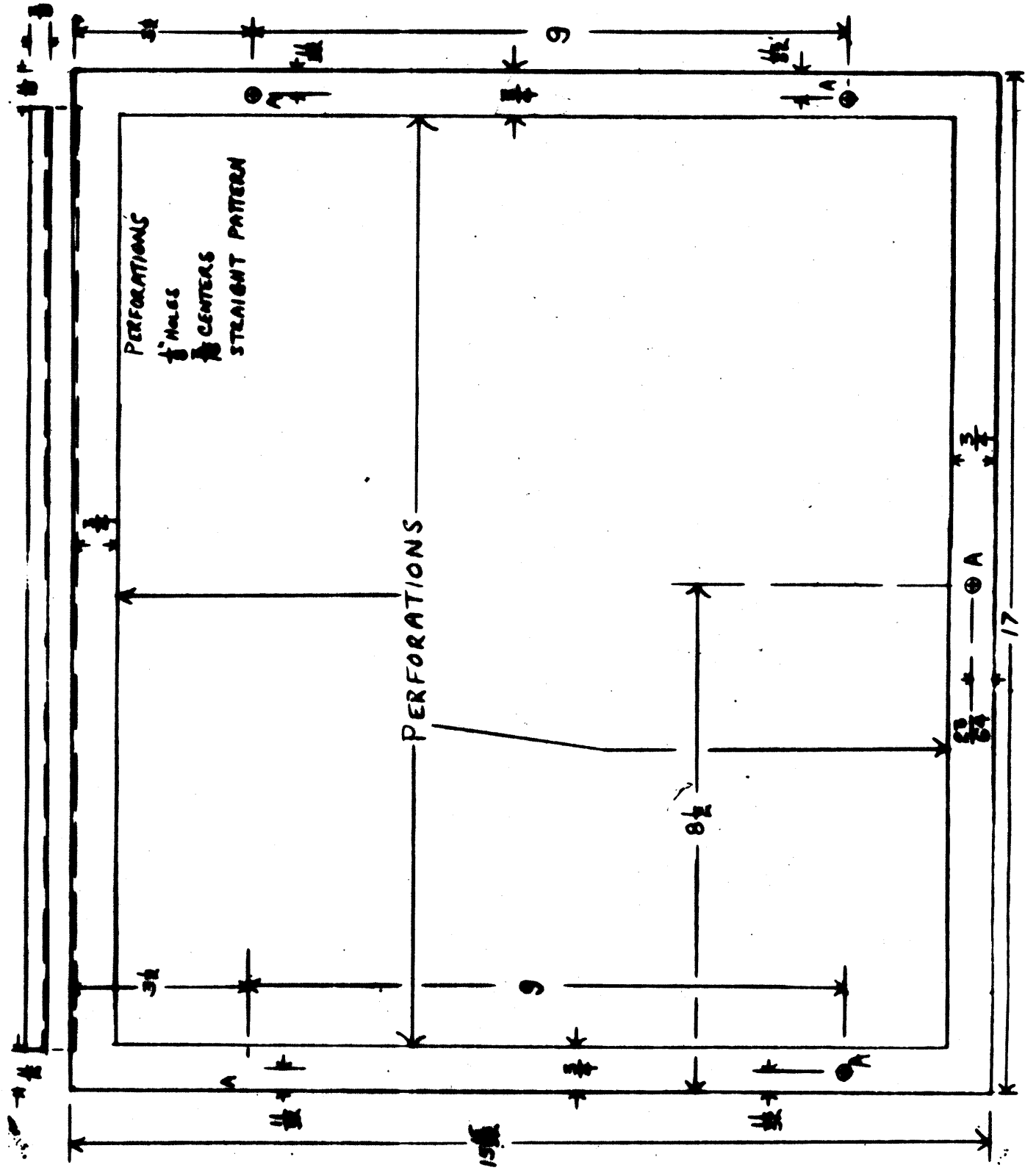
REVISIONS

DATE	E.M.N. NO.	DRAFT	CHKD	APPR
8/14/69				

ORIGINAL RELEASE FOR PRODUCTION

MS4349

KEY DESCRIPTION	QTY.
A 1/2" HOLE	5



REF'D.	ITEM	PART NUMBER	DESCRIPTION	SYMBOL
MATERIAL			THE TECHNICAL MATERIEL CORP. MAMARONECK, NEW YORK	
			TITLE	
			DRAWN	
			CHECKED	
			ELECT. DES.	
			MECH. DES.	
			DATE	
			DATE	
			DATE	
			DATE	

ALUMINUM .064 THICK, H32 FINISH  
# 14 IRIDIUM

UNLESS OTHERWISE SPECIFIED DIMENSIONS ARE IN INCHES AND INCLUDE CHEMICALLY APPLIED OR PLATED FINISHES  
DECIMALS ± .005  
FRACTIONS ± 1/64 ANGLES ± 0.50°

SCALE	DATE	BY	CHKD.	APP'D.
AS SHOWN				

THE CONTENTS OF THIS DRAWING ARE THE EXCLUSIVE PROPERTY OF THE TECHNICAL MATERIEL CORP. ITS UNAUTHORIZED USE OR REPRODUCTION IN WHOLE OR IN PART IS STRICTLY PROHIBITED.

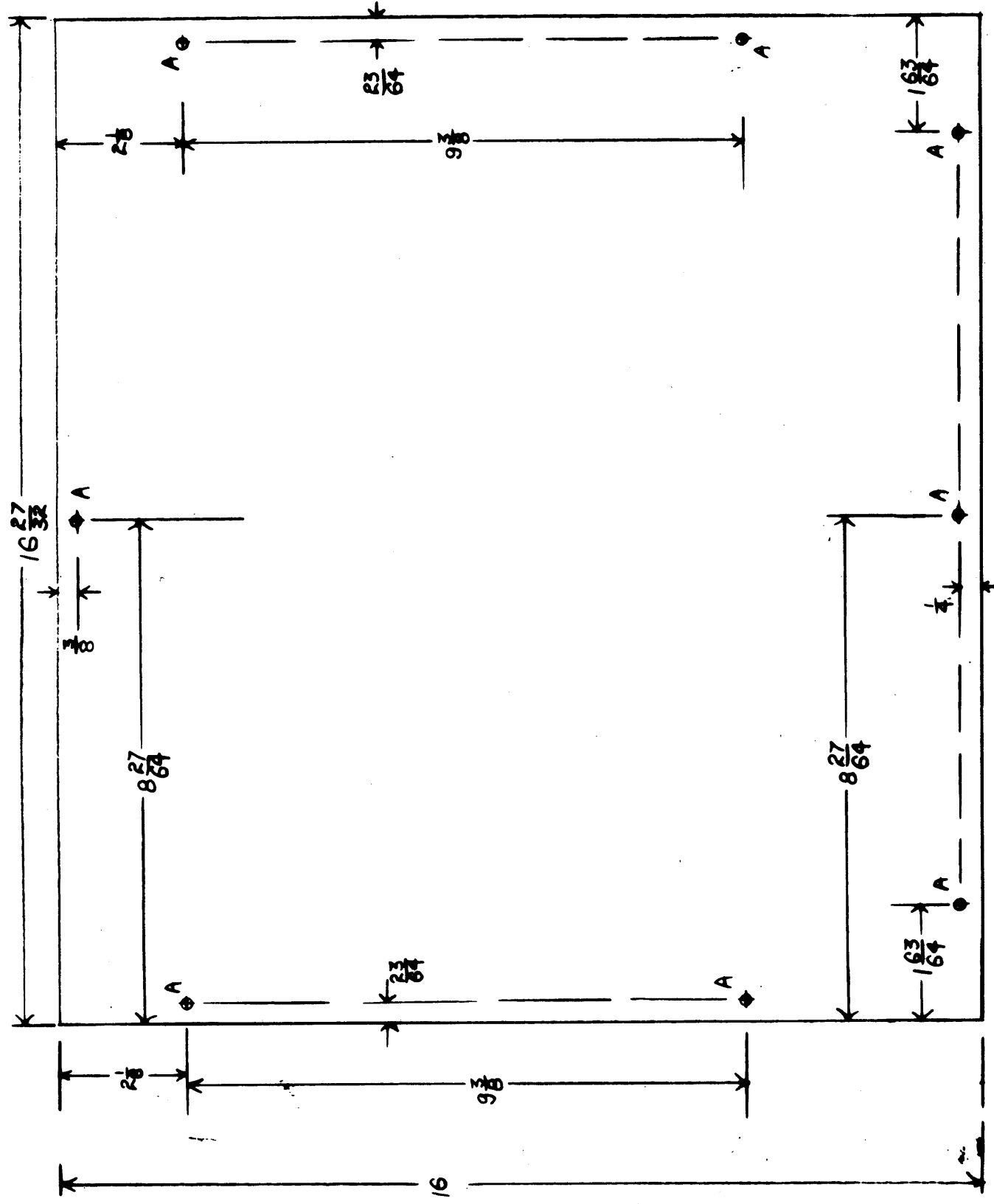
NOTES

REVISIONS

SYM	DESCRIPTION	DATE	E.M.N. NO.	DRAFT	CHKD	APPD
Ø	ORIGINAL RELEASE FOR PRODUCTION	8/14/69	Ø			

MS4350

KEY DESCRIPTION	QTY
A 1/4" HOLE	8



REQ'D.	ITEM	PART NUMBER	DESCRIPTION	SYMBOL
		#16 CR SAE 1008	THE TECHNICAL MATERIEL CORP. MAMARONECK, NEW YORK	
		CADMIUM PLATE AND (R.D.I.T.E (GOLD))	PLATE, BOTTOM	
		UNLESS OTHERWISE SPECIFIED DIMENSIONS ARE IN INCHES AND INCLUDE CHEMICALLY APPLIED OR PLATED FINISHES		
		DECIMALS .1 ± .05 .1X ± .01 .1XX ± .008		
		FRACTIONS ± 1/64 ANGLES ± 0° 30'		
		TOLERANCES		

QTY./UNIT	SCALE	MODEL USED ON	ASBY. NO.
		FSA	SA01- (A10513)

DATE	FINAL APPROVAL	DATE	DATE

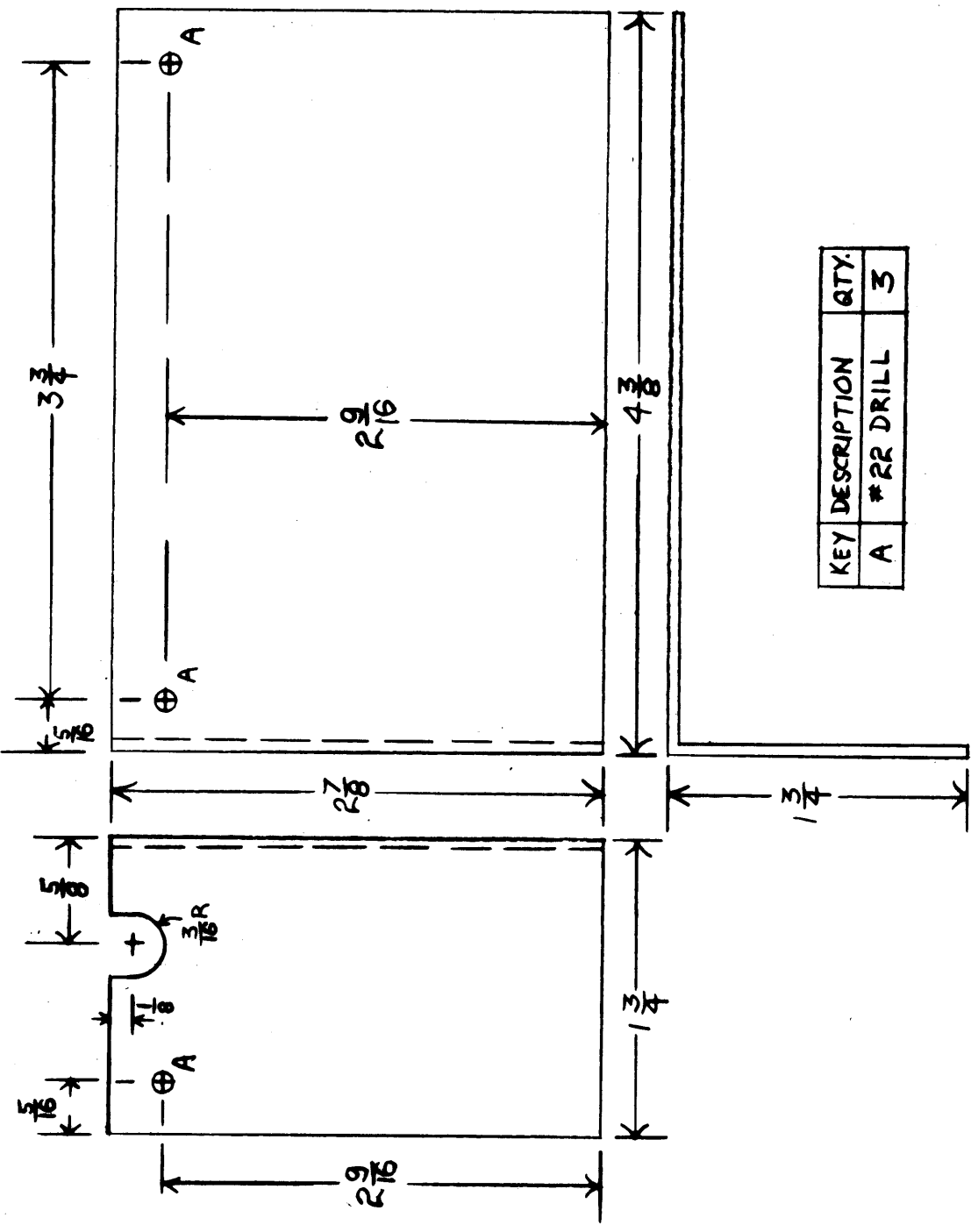
NOTES

THE CONTENTS OF THIS DRAWING ARE THE EXCLUSIVE PROPERTY OF THE TECHNICAL MATERIEL CORP. ITS UNAUTHORIZED USE OR REPRODUCTION IN WHOLE OR IN PART IS STRICTLY FORBIDDEN.

REVISION

SYM	DESCRIPTION	DATE	E.M.N. NO.	DRAFT	CHKD	APPD
Ø	ORIGINAL RELEASE FOR PRODUCTION	8/19/69				

MS4351



QTY./UNIT	FSA	MODEL USED ON	ASSY. NO.
SCALE		CODE	S401- (A10517)

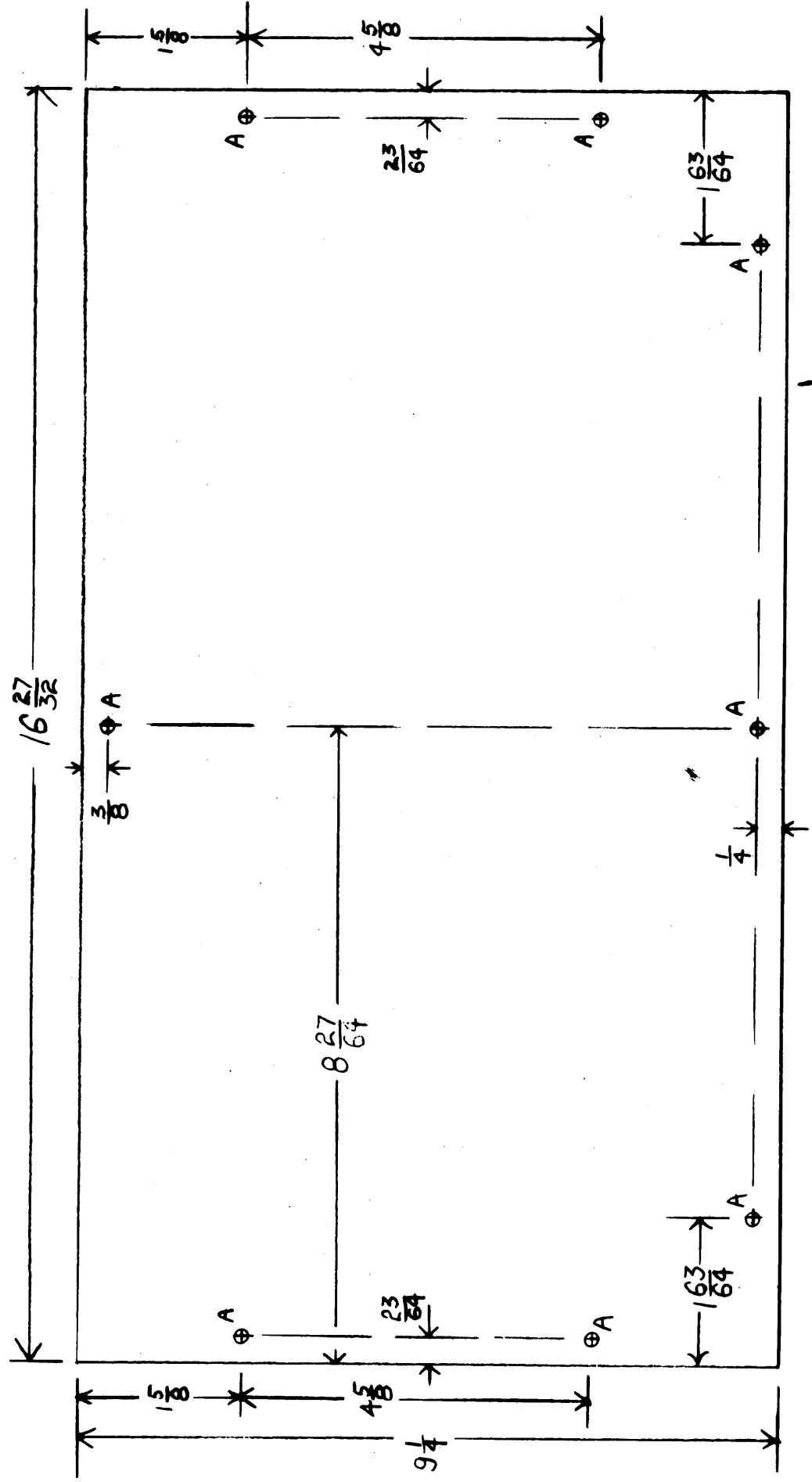
THE CONTENTS OF THIS DRAWING ARE THE EXCLUSIVE PROPERTY OF THE TECHNICAL MATERIEL CORP. ITS UNAUTHORIZED USE OR REPRODUCTION IN WHOLE OR IN PART IS STRICTLY FORBIDDEN.

NOTES

REQ'D.	ITEM	PART NUMBER	DESCRIPTION	SYMBOL
			LIST OF MATERIAL	
			THE TECHNICAL MATERIEL CORP. MAMARONECK, NEW YORK	
			SHIELD, OSC.	
			UNLESS OTHERWISE SPECIFIED DIMENSIONS ARE IN INCHES AND INCLUDE CHEMICALLY APPLIED OR PLATED FINISHES	
			DECIMALS X ± .05 .XX ± .01 .XXX ± .005	
			FRACT. NS ± 1/64 ANGLES ± 0° 30'	
			TOLERANCES	
			ELECT. DES.	
			MECH. DES.	
			DATE	
			DATE	
			DATE	
			DATE	
			FINAL APPROVAL	
			DATE	8/12/69
			MS4351	
			SHEET	
			REV. LTR.	

REVISIONS			
BYN	DATE	E.M.N. NO.	DESCRIPTION
⊕	9/19/69	⊕	ORIGINAL RELEASE FOR PRODUCTION

MS4352



KEY DESCRIPTION	QTY.
A 1/4" HOLE	8

REQ'D.	ITEM	PART NUMBER	DESCRIPTION	SYMBOL
			LIST OF MATERIAL	
			THE TECHNICAL MATERIEL CORP. MAMARONECK, NEW YORK	
			TITLE	
			#14 12IDITE	
			.064 THICK ALUMINUM, 2022 H32	
			FINISH	
			UNLESS OTHERWISE SPECIFIED DIMENSIONS ARE IN INCHES AND INCLUDE CHEMICALLY APPLIED OR PLATED FINISHES	
			DECIMALS ± .05	
			FRACTIONS ± 1/64	
			ANGLES ± 0° 30'	
			TOLERANCES ± .005	

QTY./UNIT	SCALE	MODEL USED ON	ASSY. NO.
1		FSA	S401- (A105(2))

THE CONTENTS OF THIS DRAWING ARE THE EXCLUSIVE PROPERTY OF THE TECHNICAL MATERIEL CORP. ITS UNAUTHORIZED USE OR REPRODUCTION IN WHOLE OR IN PART IS STRICTLY FORBIDDEN.

NOTES

DATE	FINAL APPROVAL	DATE	DATE
9/12/69	[Signature]		

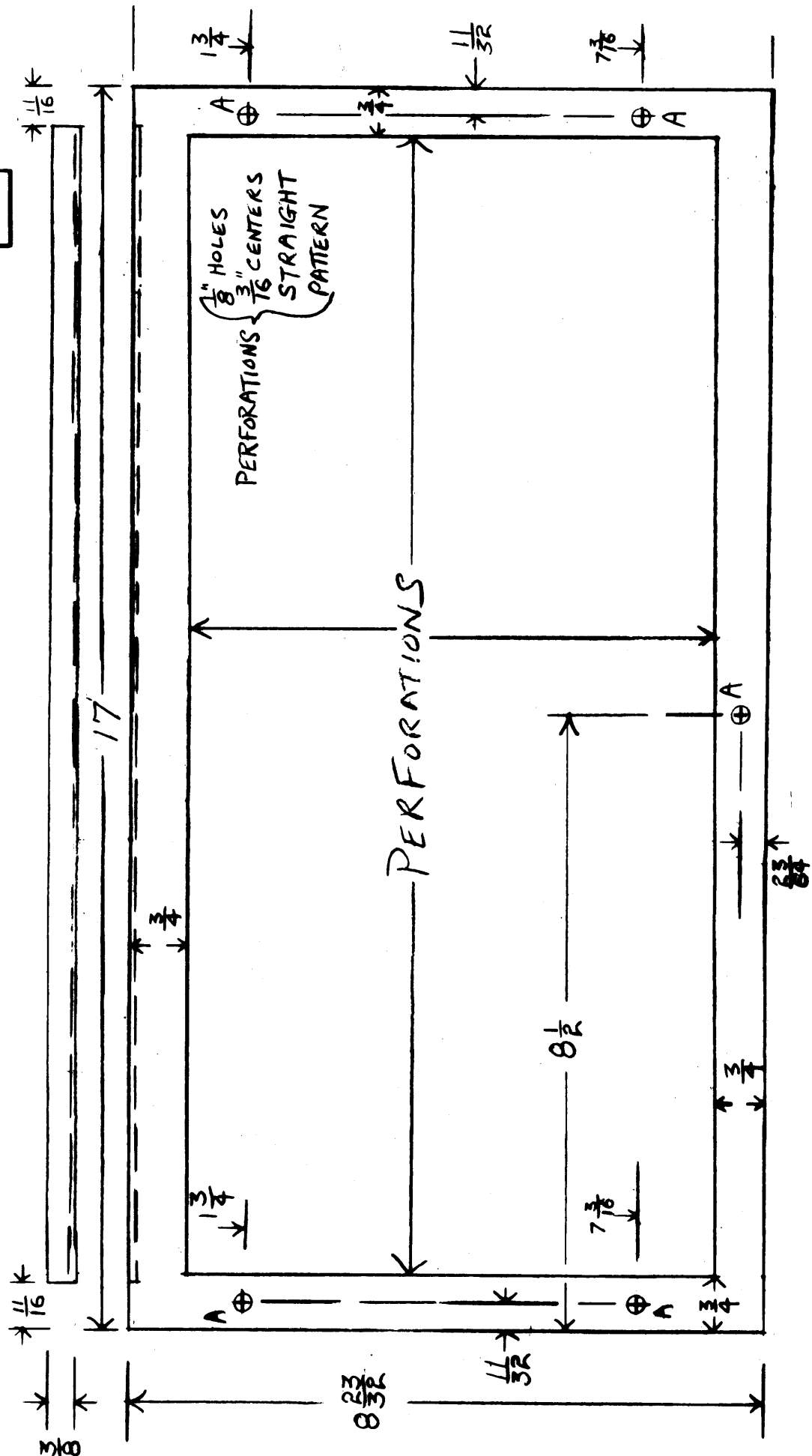
MS4352

SHEET

STOCK NO. 440H

KEY	DESCRIPTION	QTY.
A	1/4" HOLE	5

MS4353



REVISIONS			
SYM	DESCRIPTION	E.M.N. NO.	DATE
Ø	ORIGINAL RELEASE FOR PRODUCTION	Ø	8/14/69

SYM	DESCRIPTION	E.M.N. NO.	DRAFT	CHKD	APPD
Ø					

REQ'D.	ITEM	PART NUMBER	DESCRIPTION	SYMBOL
MATERIAL	064 THICK, ALUMINUM, 5052 H82		THE TECHNICAL MATERIEL CORP. MAMARONECK, NEW YORK	
FINISH	#14 IRIDITE		COVER, TOP	
UNLESS OTHERWISE SPECIFIED DIMENSIONS ARE IN INCHES AND INCLUDE CHEMICALLY APPLIED OR PLATED FINISHES				
DECIMALS	± .05	FRACTIONS	± 1/64	
XX ± .1	TOLERANCES	ANGLES	± 0° 30'	
XXX ± .005				

QTY./UNIT	MODEL USED ON	ASSY. NO.
SCALE	FSA	S401 - (A105140)

NOTES

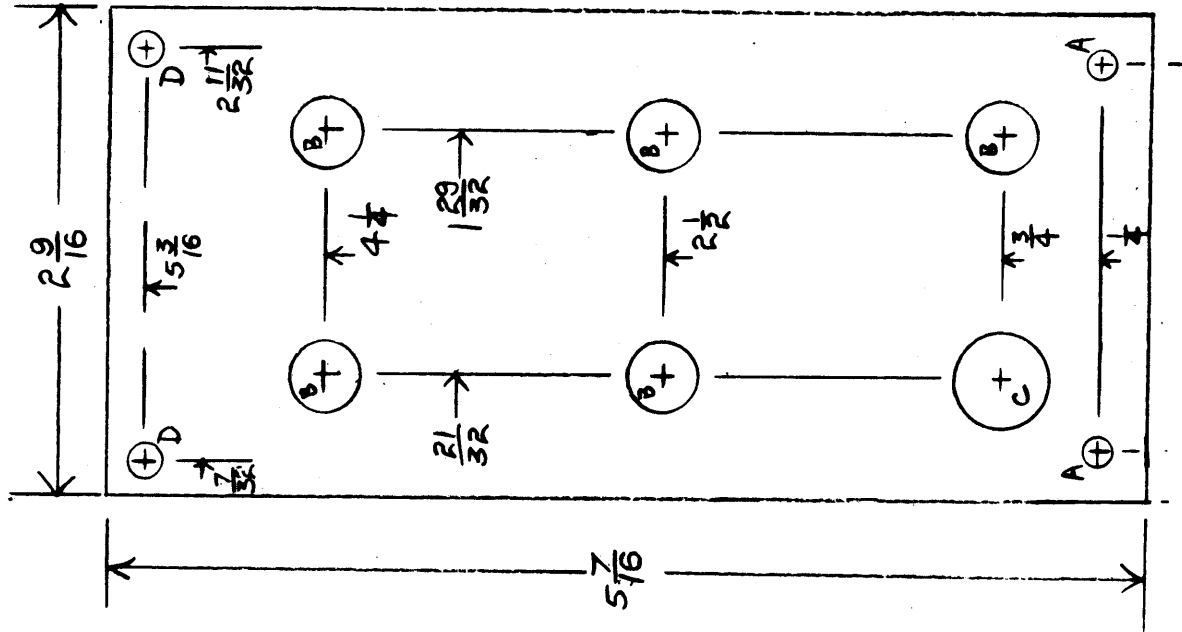
THE CONTENTS OF THIS DRAWING ARE THE EXCLUSIVE PROPERTY OF THE TECHNICAL MATERIEL CORP. ITS UNAUTHORIZED USE OR REPRODUCTION IN WHOLE OR IN PART IS STRICTLY FORBIDDEN.

DRAWN	DATE	FINAL APPROVAL	DATE
			8/12/69
CHECKED	DATE		
ELECT. DES.	DATE		
MECH. DES.	DATE		

MS4353

SHEET	REV. LTR.
	Ø

KEY	DESCRIPTION	QTY.
A	#22 DRILL	2
B	$\frac{1}{8}$ HOLE	5
C	$\frac{1}{16}$ HOLE	1
D	$\frac{1}{16}$	2



**MS4354**

REVISIONS			
SYM	DESCRIPTION	DATE	E.M.N. NO.
Ø	ORIGINAL RELEASE FOR PRODUCTION	11/19/69	Ø

REQ'D.	ITEM	PART NUMBER	DESCRIPTION	SYMBOL
			LIST OF MATERIAL	
			THE TECHNICAL MATERIEL CORP. MAMARONECK, NEW YORK	
			PANEL, CONTROL	
			TITLE	
			DRAWN	DATE
			CHECKED	DATE
			ELECT. DES.	DATE
			MECH. DES.	DATE
			FINAL APPROVAL	DATE
			MS4354	REV. LTR.

QTY./UNIT	SCALE	MODEL USED ON	ASSY. NO.
		FSA	
		S401-	(A105220)

UNLESS OTHERWISE SPECIFIED DIMENSIONS ARE IN INCHES AND INCLUDE CHEMICALLY APPLIED OR PLATED FINISHES

DECIMALS  
 X ± .05  
 XX ± .01  
 .XXX ± .005

FRACTI NS  
 ± 1/64  
 AN LBS  
 ± 0° 30'

TOLERANCES

NOTES

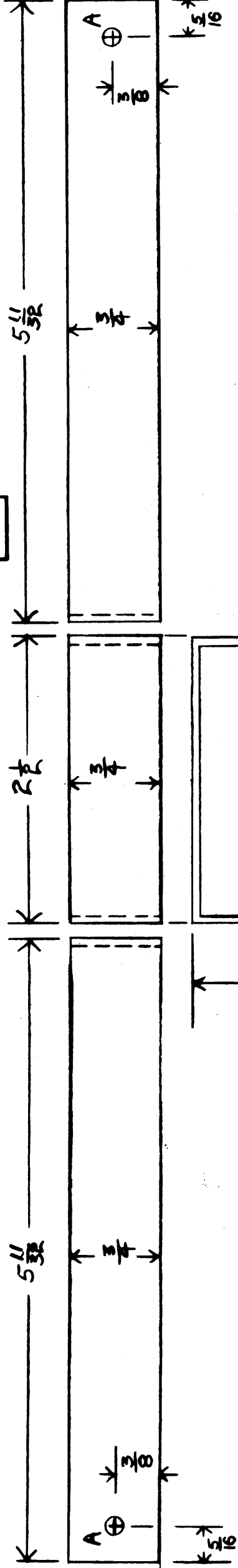
THE CONTENTS OF THIS DRAWING ARE THE EXCLUSIVE PROPERTY OF THE TECHNICAL MATERIEL CORP. ITS UNAUTHORIZED USE OR REPRODUCTION IN WHOLE OR IN PART IS STRICTLY FORBIDDEN.



REVISIONS

SYM	DESCRIPTION	DATE	E.M.N. NO.	DRAFT	CHKD	APPD
Ø	ORIGINAL RELEASE FOR PRODUCTION	8/14/69	Ø			

MS4355



KEY DESCRIPTION	QTY
A #22 DRILL	2

MATERIAL:  
1/8" ALUMINUM 5052-H32

FINISH:  
#14 IRIDITE

NOTES

THE CONTENTS OF THIS DRAWING ARE THE EXCLUSIVE PROPERTY OF THE TECHNICAL MATERIEL CORP. ITS UNAUTHORIZED USE OR REPRODUCTION IN WHOLE OR IN PART IS STRICTLY FORBIDDEN.

REQ'D.	ITEM	PART NUMBER	DESCRIPTION	SYMBOL
			LIST OF MATERIAL	
			THE TECHNICAL MATERIEL CORP. MAMARONECK, NEW YORK	
			TITLE FRAME, POTENTIOMETER BOARD	
			DRAWN	DATE
			CHECKED	DATE
			ELECT. DES.	DATE
			MECH. DES.	DATE
			FINAL APPROVAL	DATE
			MS4355	Ø
			SHEET	REV. LTR.

QTY/UNIT SCALE: FSA

MODEL USED ON: S401- (A10521)

UNLESS OTHERWISE SPECIFIED DIMENSIONS ARE IN INCHES AND INCLUDE CHEMICALLY APPLIED OR PLATED FINISHES

DECIMALS: .X ± .08, .XX ± .01, .XXX ± .008

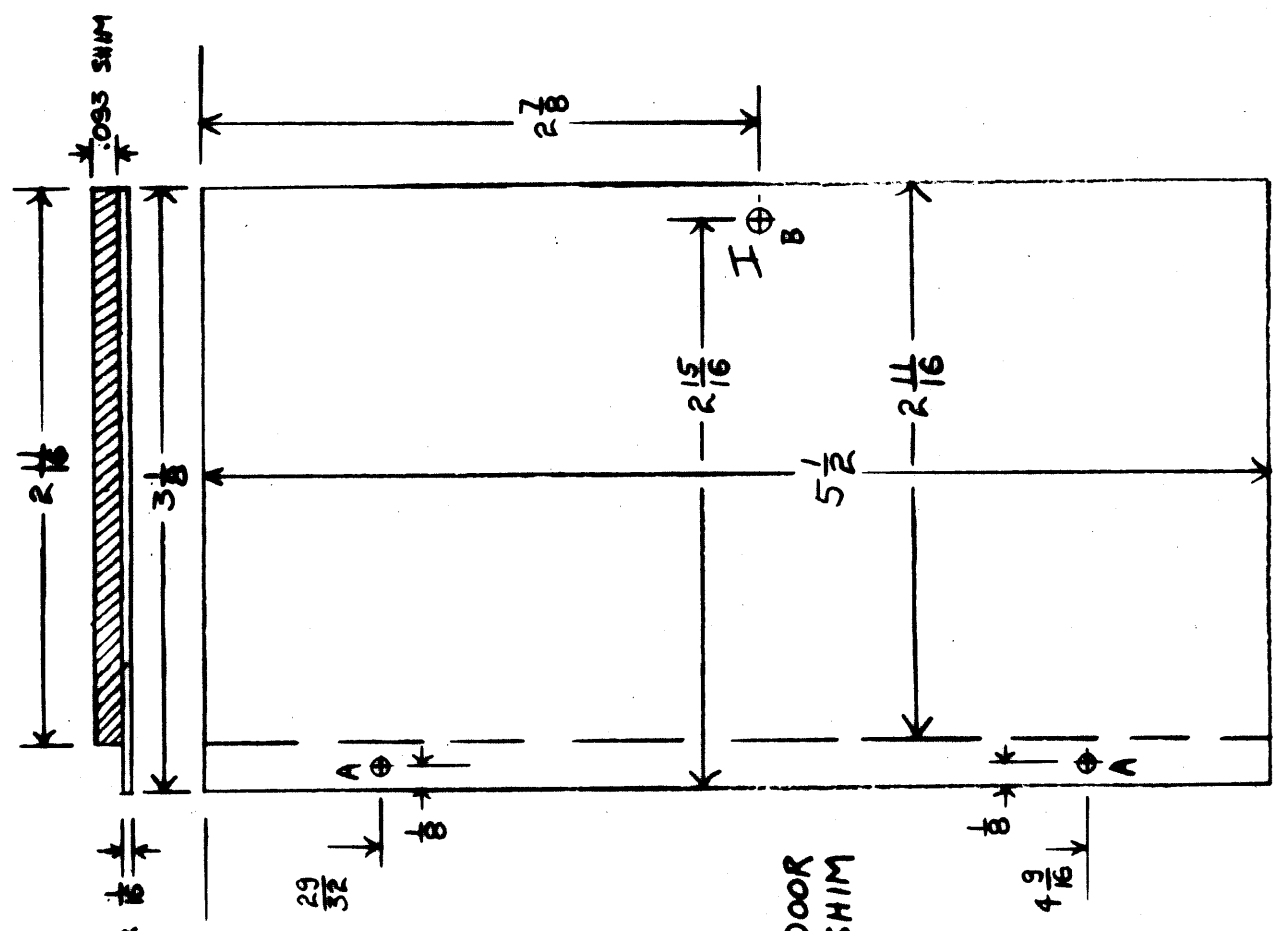
FRACTIONS: ± 1/64 AN LBS, ± 0° 30'

TOLERANCES: ± 0° 30'

REVISIONS

SYM	DESCRIPTION	DATE	E.M.N. NO.	DRAFT	CHKD	APPD
Ø	ORIGINAL RELEASE FOR PRODUCTION	8/19/69				

MS4359



NOTE - ALL HOLES ARE DRILLED AFTER DOOR + SHIM ARE LAMINATED - USE EPOXY.

KEY DESCRIPTION	QTY
A 1/8" HOLE	2
B 6-32 TAP	1

MATERIAL:  
 1/16" ALUMINUM 5052-H32 - DOOR  
 .093 " " - SHIM  
DO NOT FINISH

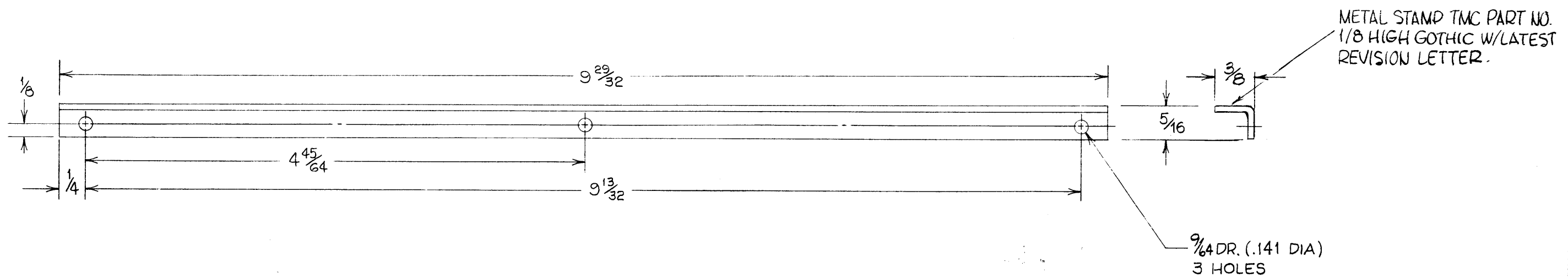
REQ'D.	ITEM	PART NUMBER	DESCRIPTION	SYMBOL
			LIST OF MATERIAL	
			THE TECHNICAL MATERIEL CORP. MAMARONECK, NEW YORK	
			TITLE PLATE, ACCESS, CONT. PANEL	
			DRAWN	DATE
			CHECKED	DATE
			ELECT. DES.	DATE
			MECH. DES.	DATE
			FINAL APPROVAL	DATE
			MS4359	8/19/69
			SHEET	REV. LTR.

QTY./UNIT	SCALE	ASST. NO.
FSA MODEL USED ON		S401- (A10529)
CODE		
THE CONTENTS OF THIS DRAWING ARE THE EXCLUSIVE PROPERTY OF THE TECHNICAL MATERIEL CORP. ITS UNAUTHORIZED USE OR REPRODUCTION IN WHOLE OR IN PART IS STRICTLY FORBIDDEN.		

NOTES

MS 4362

REVISIONS						
SYM	DESCRIPTION	DATE	E.M.N. NO.	DRAFT	CHKD	APPD
X <sub>1</sub>	3/8 WAS 1/4; 9/64 DR. WAS 1/8	4.22.65		HCA		
Ø	ORIGINAL RELEASE FOR PRODUCTION	6/30/66	Ø	CV		JL



I. DO NOT SCALE DRAWING.

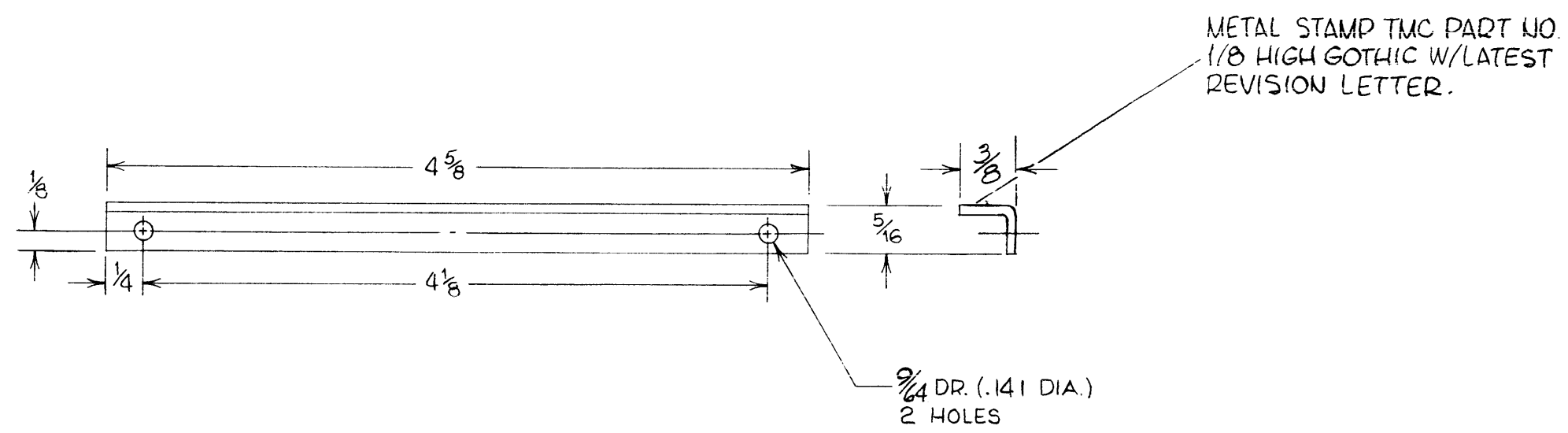
**NOTES**

7	CMRA-1	
QTY./UNIT	MODEL USED ON	ASS'Y. NO.
SCALE 1/1	CODE	
THE CONTENTS OF THIS DRAWING ARE THE EXCLUSIVE PROPERTY OF THE TECHNICAL MATERIEL CORP. ITS UNAUTHORIZED USE OR REPRODUCTION IN WHOLE OR IN PART IS STRICTLY FORBIDDEN.		

REQ'D.	ITEM	PART NUMBER	DESCRIPTION	SYMBOL
LIST OF MATERIAL FORMERLY 5013-11				
MATERIAL 5052-H32 ALUMINUM 1/16 (.062) THICK STOCK			THE TECHNICAL MATERIEL CORP. MAMARONECK, NEW YORK	
FINISH SA04-IRIOITE			TITLE STIFFENER, PC BOARD	
UNLESS OTHERWISE SPECIFIED DIMENSIONS ARE IN INCHES AND INCLUDE CHEMICALLY APPLIED OR PLATED FINISHES			DRAWN A. G. ROSE	DATE 12-30-64
			CHECKED E. D. JENSEN	DATE 2/3/65
DECIMALS .X ± .05 .XX ± .01 .XXX ± .005			FINAL APPROVAL <i>[Signature]</i>	
			DATE MS 4362	
TOLERANCES ± 1/64 ANGLES ± 0° 30'			MECH. DES. <i>[Signature]</i>	DATE 2-16-65
			SHEET	

MS 4363

REVISIONS						
BYM	DESCRIPTION	DATE	E.M.N. NO.	DRAFT	CHKD	APPD
X <sub>1</sub>	3/8 WAS 1/4 ; 9/64 DR. WAS 1/8	7-27-65		HCA		
Ø	ORIGINAL RELEASE FOR PRODUCTION	7-28-66	Ø	RME		

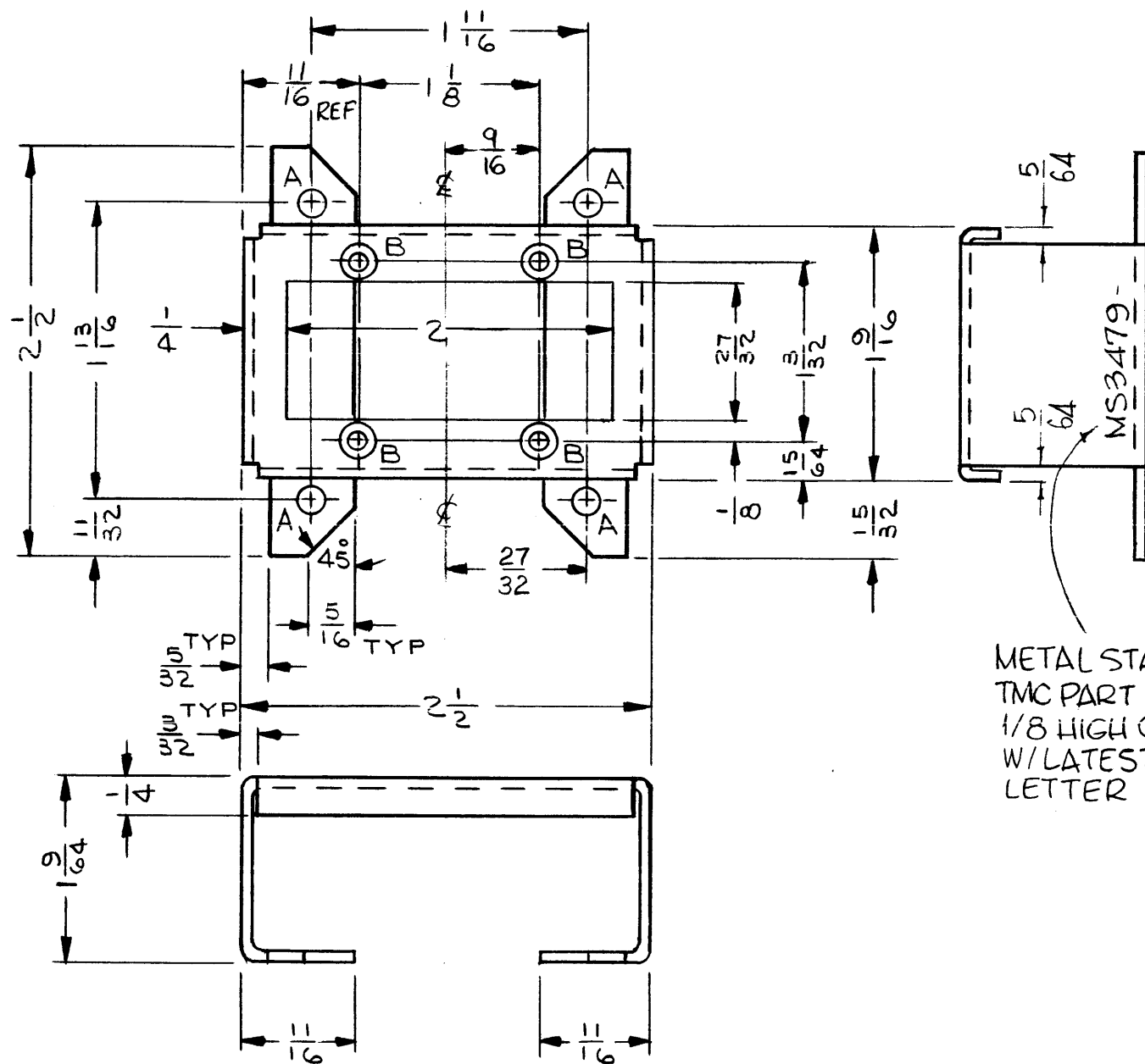


REQ'D.	ITEM	PART NUMBER	DESCRIPTION	SYMBOL
LIST OF MATERIAL FORMERLY 5013-12				
MATERIAL		THE TECHNICAL MATERIEL CORP. MAMARONECK, NEW YORK		
5052-H32 ALUMINUM 1/16 (.062) THICK STOCK		TITLE STIFFENER, PC BD, PS		
FINISH		S404 IRIDITE		
UNLESS OTHERWISE SPECIFIED DIMENSIONS ARE IN INCHES AND INCLUDE CHEMICALLY APPLIED OR PLATED FINISHES		DRAWN <i>A. G. [Signature]</i>	DATE 12-30-64	FINAL APPROVAL <i>[Signature]</i>
		CHECKED <i>E. D. JENSEN</i>	DATE 2/3/65	DATE 7/28/66
		ELECT. DES.	DATE	REV. LTR.
		MECH. DES.	DATE 2-16-65	Ø
		MS4363		
		SHEET		

3	CMRA-1	
Q'TY./UNIT	MODEL USED ON	ASS'Y. NO.
SCALE 1/1	CODE	
THE CONTENTS OF THIS DRAWING ARE THE EXCLUSIVE PROPERTY OF THE TECHNICAL MATERIEL CORP. ITS UNAUTHORIZED USE OR REPRODUCTION IN WHOLE OR IN PART IS STRICTLY FORBIDDEN.		

1. DO NOT SCALE DRAWING.

**NOTES**



MS4379 A

REVISIONS

SYM	DESCRIPTION	DATE	E.M.N. NO.	DRAFT	CHKD	APPD
Ø	ORIGINAL RELEASE FOR PRODUCTION	5/13/65	-AA-	JL		
A	C/L, 9/16, 27/32 ADDED. 1/8 WAS 1/32, 1/16 WAS 4/64. 1/32 DELETED	6-22-65	142 54	D.V.V.	<i>[Signature]</i>	<i>[Signature]</i>

HOLE LEGEND		
HOLE	DESCRIPTION	REQ'D
A	3/16 DIA.	4
B	.120 DIA & C'SINK 82° X .230 DIA	4

METAL STAMP  
TMC PART NO.  
1/8 HIGH GOTHIC  
W/LATEST REV.  
LETTER

UNLESS OTHERWISE SPECIFIED:

1. USE MATERIAL THICKNESS FOR MAXIMUM RADIUS ON ALL BENDS
2. ALL ANGULAR BENDS 90 DEGREES
3. REMOVE ALL BURRS AND SHARP EDGES

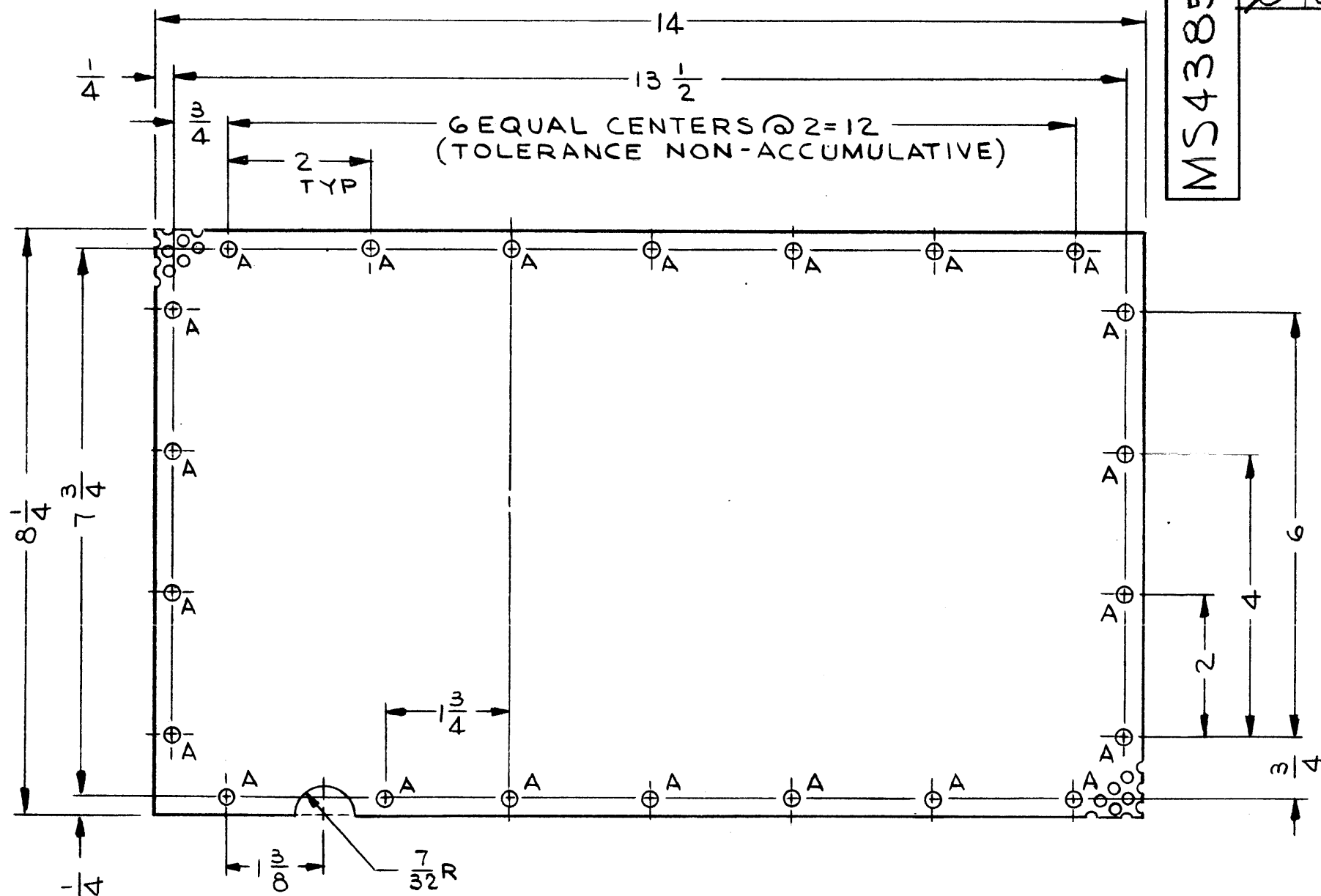
NOTES

2	HAF	
QTY./UNIT	MODEL USED ON	ASS'Y. NO.
SCALE	CODE	

THE CONTENTS OF THIS DRAWING ARE THE EXCLUSIVE PROPERTY OF THE TECHNICAL MATERIEL CORP. ITS UNAUTHORIZED USE OR REPRODUCTION IN WHOLE OR IN PART IS STRICTLY FORBIDDEN.

REQ'D.	ITEM	PART NUMBER	DESCRIPTION	SYMBOL
<b>EATON LIST OF MATERIAL</b>				
MATERIAL .064 THK ALUMINUM 5052-H32			<b>THE TECHNICAL MATERIEL CORP.</b> MAMARONECK, NEW YORK	
FINISH YELLOW IRIDITE PER S404			TITLE CONNECTOR, BRACKET	
UNLESS OTHERWISE SPECIFIED DIMENSIONS ARE IN INCHES AND INCLUDE CHEMICALLY APPLIED OR PLATED FINISHES			DRAWN J. LESHINSKI	DATE 5/11/65
			CHECKED <i>[Signature]</i>	DATE 5/13/65
			ELECT. DES. <i>[Signature]</i>	DATE
			MCH. DES. <i>[Signature]</i>	DATE 5/13/65
			FINAL APPROVAL <i>[Signature]</i> DATE 5/13/65	
			MS4379 A	
			SHEET	
			REV. LTR.	





MS4385

REVISIONS						
SYM	DESCRIPTION	DATE	E.M.N. NO.	DRAFT	CHKD	APPD
X	EXP. RELEASE	2/11/65		JL		
Ø	ORIGINAL RELEASE FOR PRODUCTION	11-23-65	Ø	<i>JL</i>		

HOLE	DESCRIPTION	REQ'D
A	5/32 DIA	22

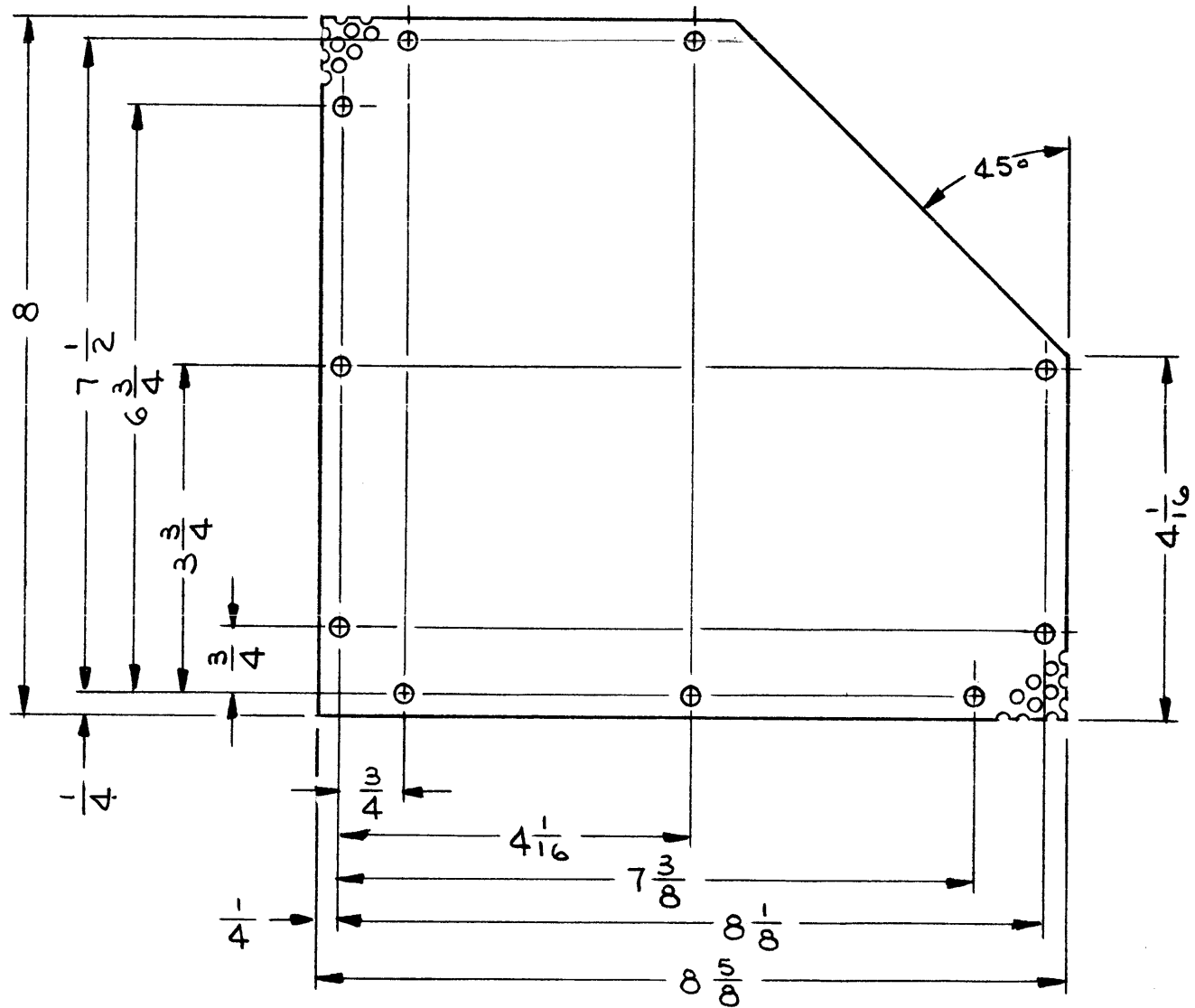
REQ'D.	ITEM	PART NUMBER	DESCRIPTION	SYMBOL
LIST OF MATERIAL				
MATERIAL .064 THK, PERFORATED ALUMINUM 1/8 DIA. HOLES STAGGERED ON 3/16 CENTERS. 5052-H32			THE TECHNICAL MATERIEL CORP. MAMARONECK, NEW YORK	
FINISH YELLOW IRIDITE PER S404			TITLE SCREEN - PA DECK	
UNLESS OTHERWISE SPECIFIED DIMENSIONS ARE IN INCHES AND INCLUDE CHEMICALLY APPLIED OR PLATED FINISHES		DRAWN J. LESHINSKI	DATE 2/11/65	FINAL APPROVAL <i>A. J. King</i>
		CHECKED <i>JCB</i>	DATE 6/24/65	DATE 11/23/65
		ELECT. DES. <i>[Signature]</i>	DATE	REV. LTR. Ø
		MECH. DES. <i>[Signature]</i>	DATE	
		MS4385		
		SHEET		

2	GPT-10KLF	
Q'TY./UNIT	MODEL USED ON	ASS'Y. NO.
SCALE 1/2	CODE	

NOTES

THE CONTENTS OF THIS DRAWING ARE THE EXCLUSIVE PROPERTY OF THE TECHNICAL MATERIEL CORP. ITS UNAUTHORIZED USE OR REPRODUCTION IN WHOLE OR IN PART IS STRICTLY FORBIDDEN.

DECIMALS	TOLERANCES	FRACTIONS
.X ± .05		± 1/64
.XX ± .01		ANGLES ± 0° 30'
.XXX ± .005		



MS4386

REVISIONS						
SYM	DESCRIPTION	DATE	FM N NO	DRAFT	CHKD	APPD
X	EXP. RELEASE	2/13/65		JL		
Ø	ORIGINAL RELEASE FOR PRODUCTION	11-23-65	Ø	<i>JL</i>		

HOLE	DESCRIPTION	REQ'D
A	5/32 DIA	10

REQ'D.	ITEM	PART NUMBER	DESCRIPTION	SYMBOL
LIST OF MATERIAL				
MATERIAL .064 THK PERFORATED ALUMINUM 1/8 DIA HOLES STAGGERD ON 3/16 CENTERS 5032-H32			THE TECHNICAL MATERIEL CORP. MAMARONECK, NEW YORK	
FINISH YELLOW IRIDITE PER S404			TITLE SCREEN - TOP SHIELD	
UNLESS OTHERWISE SPECIFIED DIMENSIONS ARE IN INCHES AND INCLUDE CHEMICALLY APPLIED OR PLATED FINISHES			DRAWN J. LESHINSKI	DATE 2/13/65
			CHECKED <i>JLB</i>	DATE 6/24/65
			ELECT. DES. <i>JLB</i>	DATE
			MECH. DES. <i>JLB</i>	DATE
			FINAL APPROVAL <i>JLB</i> MS4386	
			DATE 11/23/65	
			SHEET	
			REV. LTR. Ø	

1	GPT-10KLF	
QTY./UNIT	MODEL USED ON	ASS'Y. NO.
SCALE 1/2	CODE	
THE CONTENTS OF THIS DRAWING ARE THE EXCLUSIVE PROPERTY OF THE TECHNICAL MATERIEL CORP. ITS UNAUTHORIZED USE OR REPRODUCTION IN WHOLE OR IN PART IS STRICTLY FORBIDDEN.		

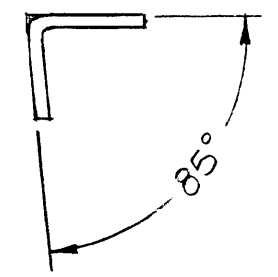
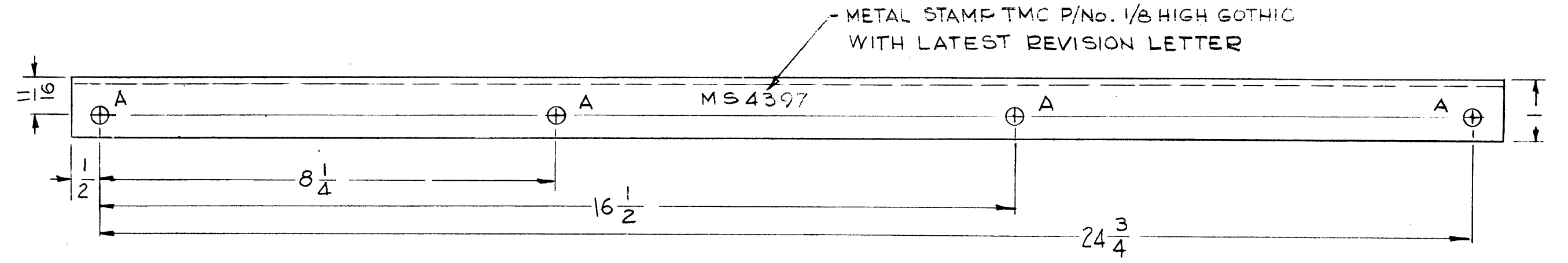
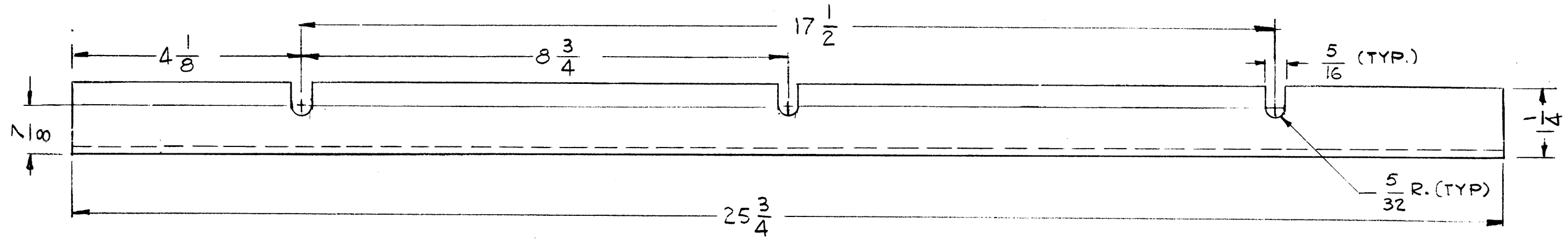
NOTES



HOLE	DESCRIPTION	REQ.
A	15/64 DIA	4

MS4397

REVISIONS						
SYM	DESCRIPTION	DATE	E.M.N. NO	DRAFT	CHKD	APPD
Ø	ORIGINAL RELEASE FOR PRODUCTION	9-16-68	Ø	R.G.		JLO



REQ'D.	ITEM	PART NUMBER	DESCRIPTION	SYMBOL
F. BUDETTI LIST OF MATERIAL				
MATERIAL		1/8 THK. ALUMINUM 5052-H32	THE TECHNICAL MATERIEL CORP. MAMARONECK, NEW YORK	
FINISH		S404 YEL IRIDITE	TITLE BRACKET, MTG. REAR	
UNLESS OTHERWISE SPECIFIED DIMENSIONS ARE IN INCHES AND INCLUDE CHEMICALLY APPLIED OR PLATED FINISHES		DRAWN G.D.L.	DATE 5-4-65	FINAL APPROVAL <i>[Signature]</i>
DECIMALS .X ± .05 .XX ± .01 .XXX ± .005		TOLERANCES	DATE 8/24/65	DATE
FRACTI NS ± 1/64 ANGLES ± 0° 30'		ELECT. DES. <i>[Signature]</i>	DATE	MS4397
		MECH. DES. <i>[Signature]</i>	DATE	Ø
SHEET				REV. LTR.

Q'TY./UNIT	MODEL USED ON	ASS'Y. NO.
1	TST-10K	
SCALE 1:2	CODE A	

THE CONTENTS OF THIS DRAWING ARE THE EXCLUSIVE PROPERTY OF THE TECHNICAL MATERIEL CORP. ITS UNAUTHORIZED USE OR REPRODUCTION IN WHOLE OR IN PART IS STRICTLY FORBIDDEN.

NOTES