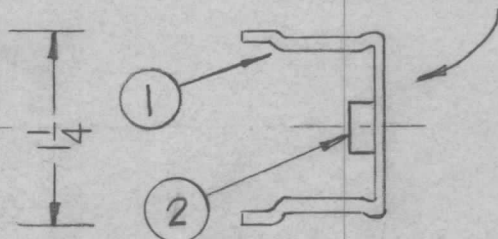
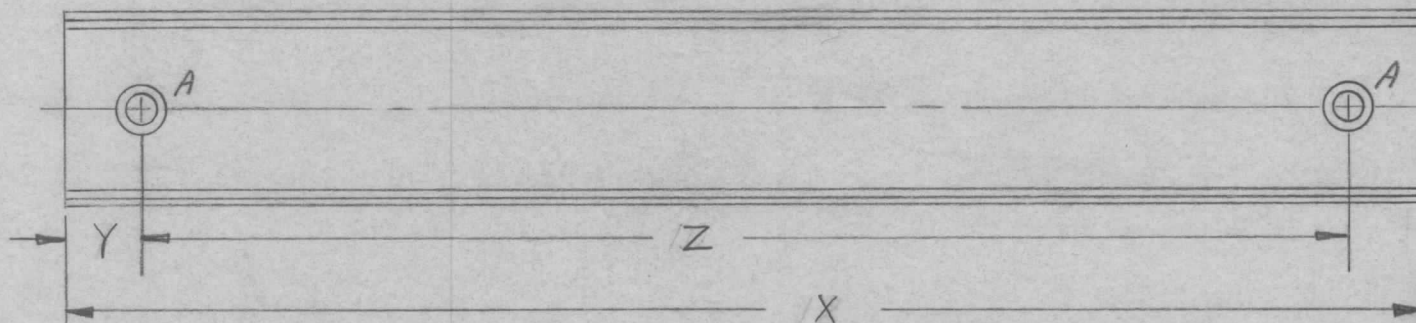


TMC P/N	X	Y	Z	REQ. PER UNIT	USED ON		
					MODEL	ASS'Y. NO.	DATE
MS4393-	12	1	10	1	AX563	AX56A	3-8-65
MS4393-2	16-7/8	1-3/16	14-1/2	1		AX660	2-8-67

MS4393 \emptyset

METAL STAMP TMC P/N
 $\frac{1}{8}$ GOTHIC ON REAR.
 W/LATEST REVISION LETTER.



MOUNT IN ALL
A HOLES.

A .191-.194 DIA. 2 REQ.

2	2	NT129-632-3	NUT, PLAIN, SPLINE	A
1	1	PO160	CND, RACEWAY, MTL	
REQ.	ITEM	PART NO.	F. BUDETTI DESCRIPTION	SYMBOL
\emptyset	ORIGINAL RELEASE FOR PRODUCTION	3-20-67	L.A.K.	
X ₁	MS4393-2 ADDED	2-8-67	<i>MM</i> <i>DM</i> <i>DM</i>	
X	EXPERIMENTAL RELEASE	3/8/65	<i>AA</i> <i>DL</i>	
SYM	DESCRIPTION	DATE	CH. NO.	DRAFTS
UNLESS OTHERWISE SPECIFIED DIMENSIONS ARE IN INCHES AND INCLUDE CHEMICALLY APPLIED OR PLATED FINISHES		SCALE	DO NOT SCALE	
DECIMALS .X \pm .05 .XX \pm .01 .XXX \pm .005	TOLERANCES	FRACTIONS \pm 1/64 ANGLES \pm 0° 30'	CODE	
TYPE & TEMPER		HEAT TREAT. SPEC.	DRAWN	CHECKED
FINISH & SPEC. NO.		ELEC. DES. APP.	MECH. DES. APP.	
			MS4393	\emptyset