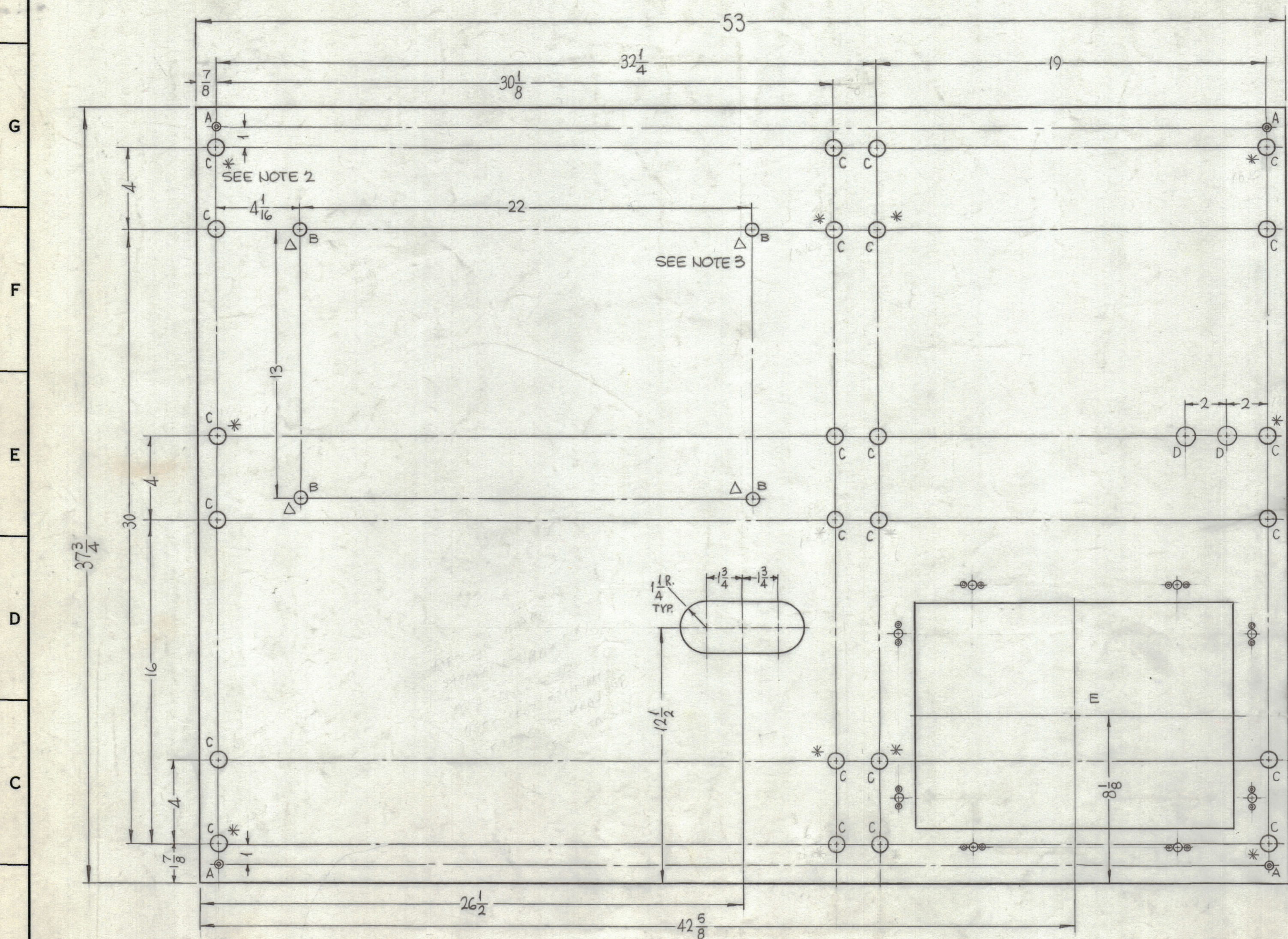
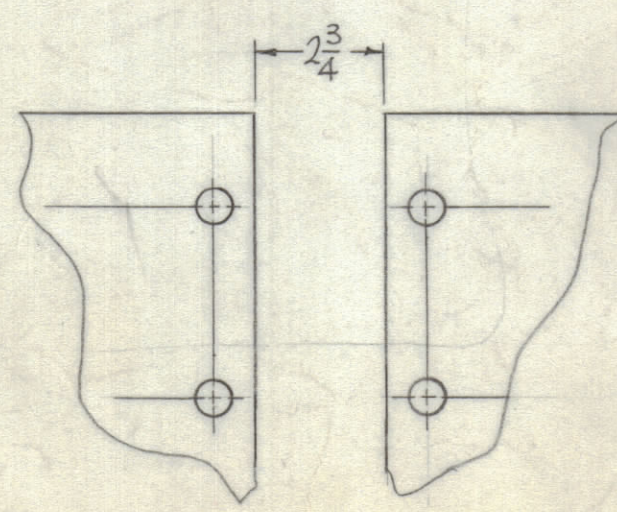
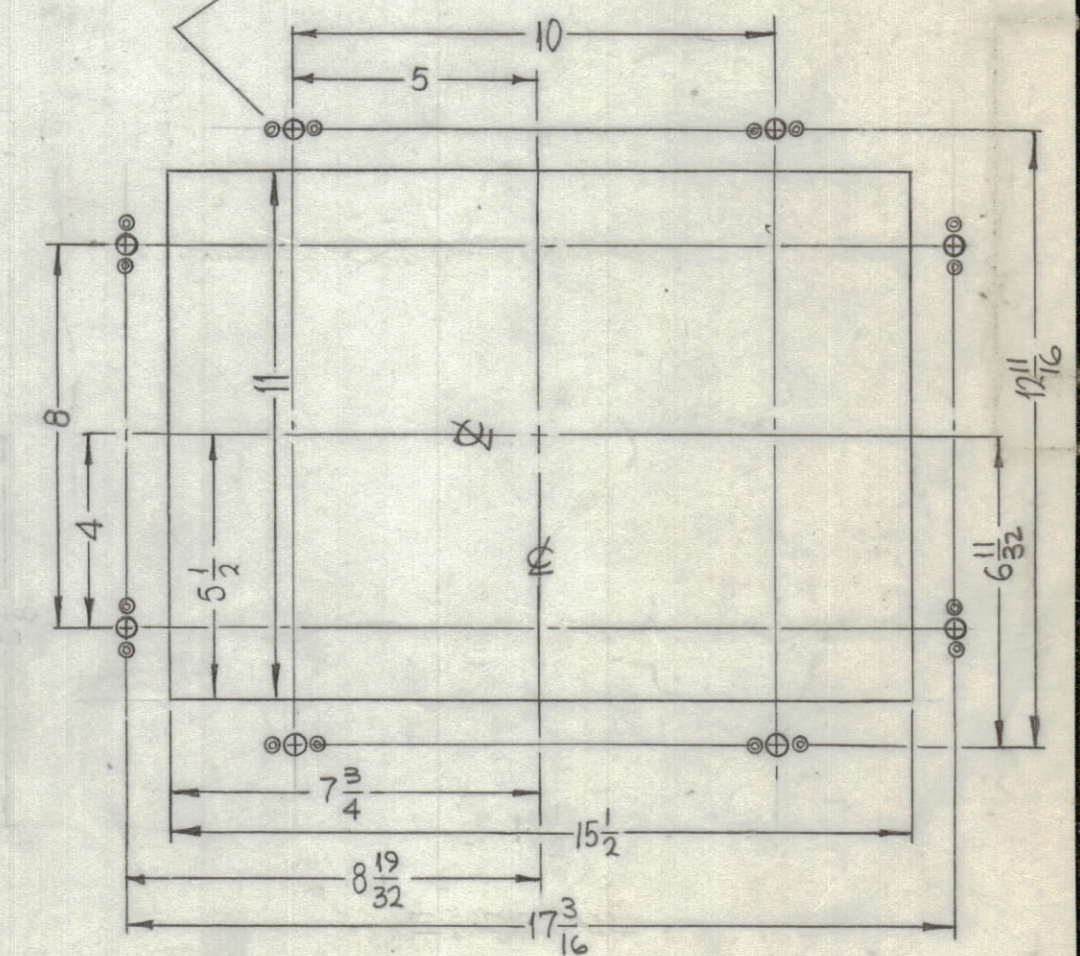
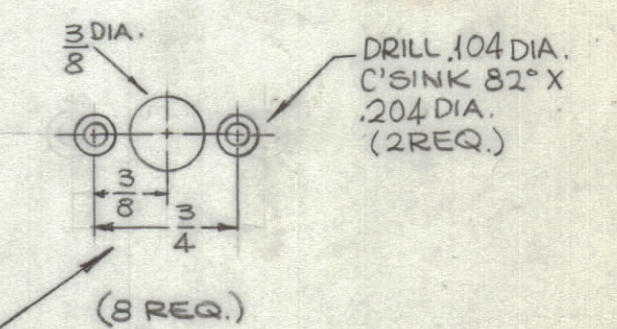


REVISIONS							
ZONE	SYM	DESCRIPTION	DATE	E.M.N. NO.	DRAFT	CHKD	APPD
	X	EXP. RELEASE	2-10-65	X	SRG		
	X1	SHEET 1 OF 2 REF. DELETED (ERROR)	7-2-65		JC		awc
	X2	NOTES 2, 3, 4, 5, ADDED	11/3/65		JC		
	Ø	ORIGINAL RELEASE FOR PRODUCTION	9/17/67	Ø	CV		fla



HOLES	DESCRIPTION	REQ.
A	DR. 196 DIA. C'SINK 82° X .390 DIA.	4
B	5/8 DIA.	4
C	3/4 DIA.	24
D	7/8 DIA.	2
E	SEE DETAIL	1

METAL STAMP TMC PART NO.
1/8 HIGH GOTHIC W/LATEST
REV. LETTER (ON REAR)



- NOTES:
- 1 - WHEN THIS DRAWING IS USED AS A GUIDE TO MOUNT THE TRANSMITTER SIDE BY SIDE AN ADDITIONAL 2-3/4" SHOULD BE ALLOWED FOR SIDE PANELS ON EACH CABINET.
 - 2 - * = NORMAL 10K MTG. HOLES
 - 3 - Δ = XNFR MTG. BOLTS PENETRATE 1/4" BELOW SHIELD
 - 4 - FOR PROJ. APOLLO TMC STRONGLY URGES UTILIZATION OF ALL MTG. HOLES FOR BOLTING FRAME, TO PROVIDE FOR SAFETY.
 - 5 - 3/8-16 MTG. BOLTS USED FOR FRAME MTG. TO STRUCTURE

NOTES

REF: SK 3184-1

REQ'D.	ITEM	PART NUMBER	DESCRIPTION	SYMBOL
F. BUDETTI LIST OF MATERIAL				
MATERIAL		THE TECHNICAL MATERIEL CORP. MAMARONECK, NEW YORK		
1/8 THICK ALUMINUM 5052-H32		TITLE SHIELD, BOTTOM		
FINISH		DRAWN SRG DATE 2-10-65		
S404 YEL. IRIDITE		CHECKED DATE		
UNLESS OTHERWISE SPECIFIED DIMENSIONS ARE IN INCHES AND INCLUDE CHEMICALLY APPLIED OR PLATED FINISHES		ELECT. DES. DATE		
DECIMALS .X ± .05 FRACTIONS ± 1/64 ANGLES ± 0° 30'		MECH. DES. DATE		
TOLERANCES		SHEET MS4391		
THE CONTENTS OF THIS DRAWING ARE THE EXCLUSIVE PROPERTY OF THE TECHNICAL MATERIEL CORP. ITS UNAUTHORIZED USE OR REPRODUCTION IN WHOLE OR IN PART IS STRICTLY FORBIDDEN.		REV. LTR.		