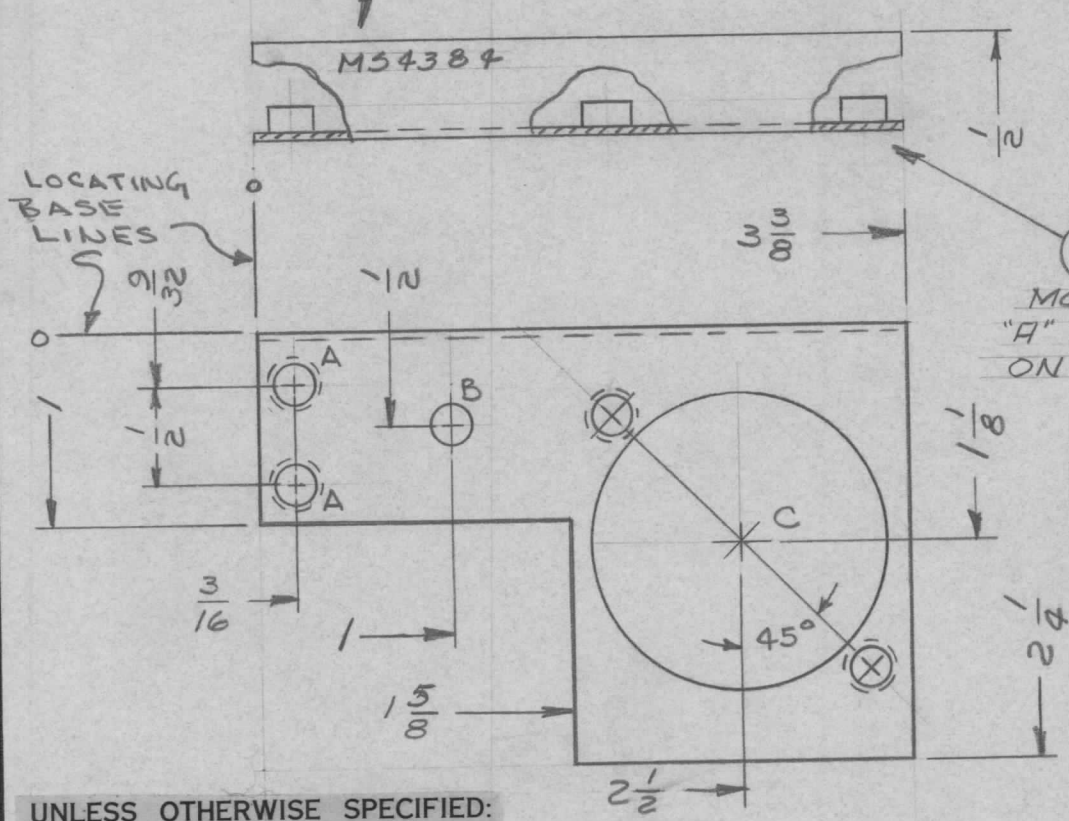


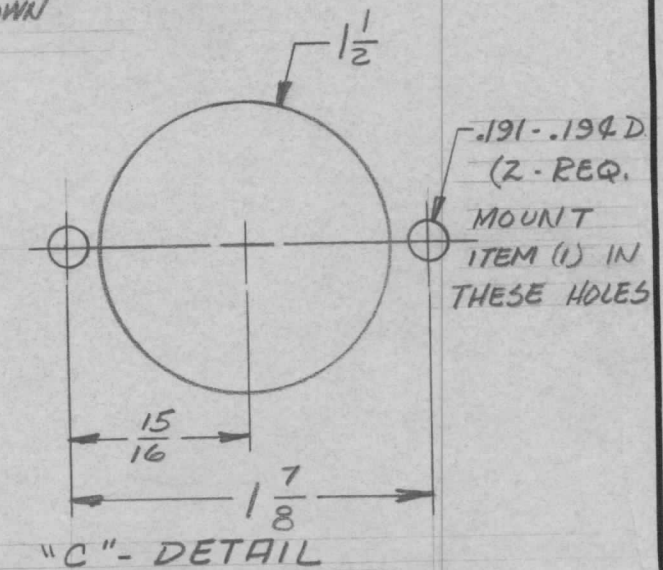
METAL STAMP TMC P/N
W/LATEST REVISION LETTER

REQ. PER UNIT	USED ON			MS4384 \emptyset
	MODEL	ASS'Y. NO.	DATE	
4	RTMU-1		2-16-64	

HOLE	DESCRIPTION	REQ.
A	.191 - .194 DIA.	2
B	11/64 DIA.	1
C	SEE DETAIL	1



MOUNT AS SHOWN IN
"A" & "C" DETAIL AS SHOWN
ON REAR.



UNLESS OTHERWISE SPECIFIED:

1. USE MATERIAL THICKNESS FOR MAXIMUM RADIUS ON ALL BENDS
2. ALL ANGULAR BENDS 90 DEGREES
3. REMOVE ALL BURRS AND SHARP EDGES
4. MOUNT INSERTS AFTER FINISHING

4	1	NT129-632-4	NUT, PLAIN, SPLINE	A
REQ. ITEM	PART NO.		DESCRIPTION	SYMBOL
	.062 THK STOCK SIZE		THE TECHNICAL MATERIEL CORP. MAMARONECK. NEW YORK	
	ALUMINUM		BRACKET, MTG, CAPACITOR	
MATERIAL		5052-H32	TYPE & TEMPER	HEAT TREAT. SPEC.
FINISH & SPEC. NO.		3A04 YEL IRIDITE	ELEC. DES. APP.	MECH. DES. APP.
SCALE		1:1	DRAWN	
UNLESS OTHERWISE SPECIFIED DIMENSIONS ARE IN INCHES AND INCLUDE CHEMICALLY APPLIED OR PLATED FINISHES		DATE	8/16/65	CHECKED
SYMBOL		DESCRIPTION	DATE	2-16-65
CH. NO.		DRAFTS	CHECKER	ENG. APP.
TOLERANCES		FRACTIONS	CODE	A
.X ± .05		± 1/64		
.XX ± .01		ANGLES		
.XXX ± .005		± 0° 30'		
DRAWN		8/16/65	FINAL APPROVAL	
MECH. DES. APP.		8/17/65	MS4384 \emptyset	