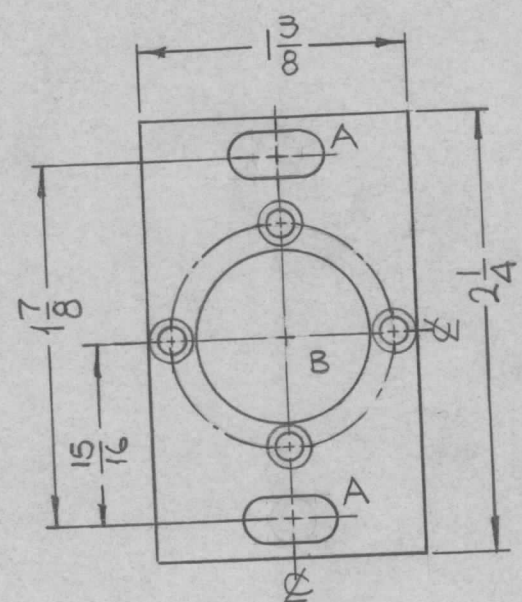
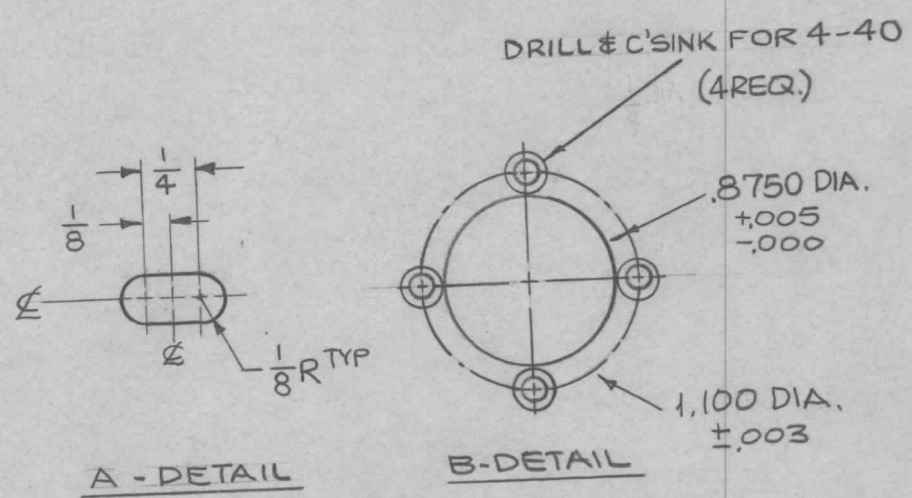


REQ. PER UNIT	USED ON			MS4376 Ø
	MODEL	ASS'Y. NO.	DATE	
1	RFTA-1		12-2-64	



HOLES	DESCRIPTION	REQ.
A	SEE DETAIL	2
B	SEE DETAIL	1



REF: LD1943

SYM	DESCRIPTION	DATE	CH. NO.	DRAFTS	CHECKER	ENG. APP.	REQ. ITEM	PART NO.	F. BUDETTI	DESCRIPTION	SYMBOL	
Ø	ORIGINAL RELEASE FOR PRODUCTION	6.27.66	#	WU			1/8 THICK			THE TECHNICAL MATERIEL CORP. MAMARONECK. NEW YORK		
X ₁	DET. A WAS 15/64 DIA HOLE, ON B'S C'SK AND	4.21.65	X ₁	KB			STOCK SIZE			PLATE, MOTOR MTG.		
X	EXP. RELEASE	12-2-64	X	SRG			ALUMINUM					
	UNLESS OTHERWISE SPECIFIED DIMENSIONS ARE IN INCHES AND INCLUDE CHEMICALLY APPLIED OR PLATED FINISHES	SCALE	1:1									
	DECIMALS .X ± .05 .XX ± .01 .XXX ± .005	TOLERANCES	FRACTIONS ± 1/64 ANGLES ± 0° 30'	CODE	A			5052-H32		SRG	CKB	FINAL APPROVAL
							TYPE & TEMPER	HEAT TREAT. SPEC.				
							5404 YELLOW IRIDITE					MS4376 Ø
							FINISH & SPEC. NO.		ELEC. DES. APP.	MECH. DES. APP.		