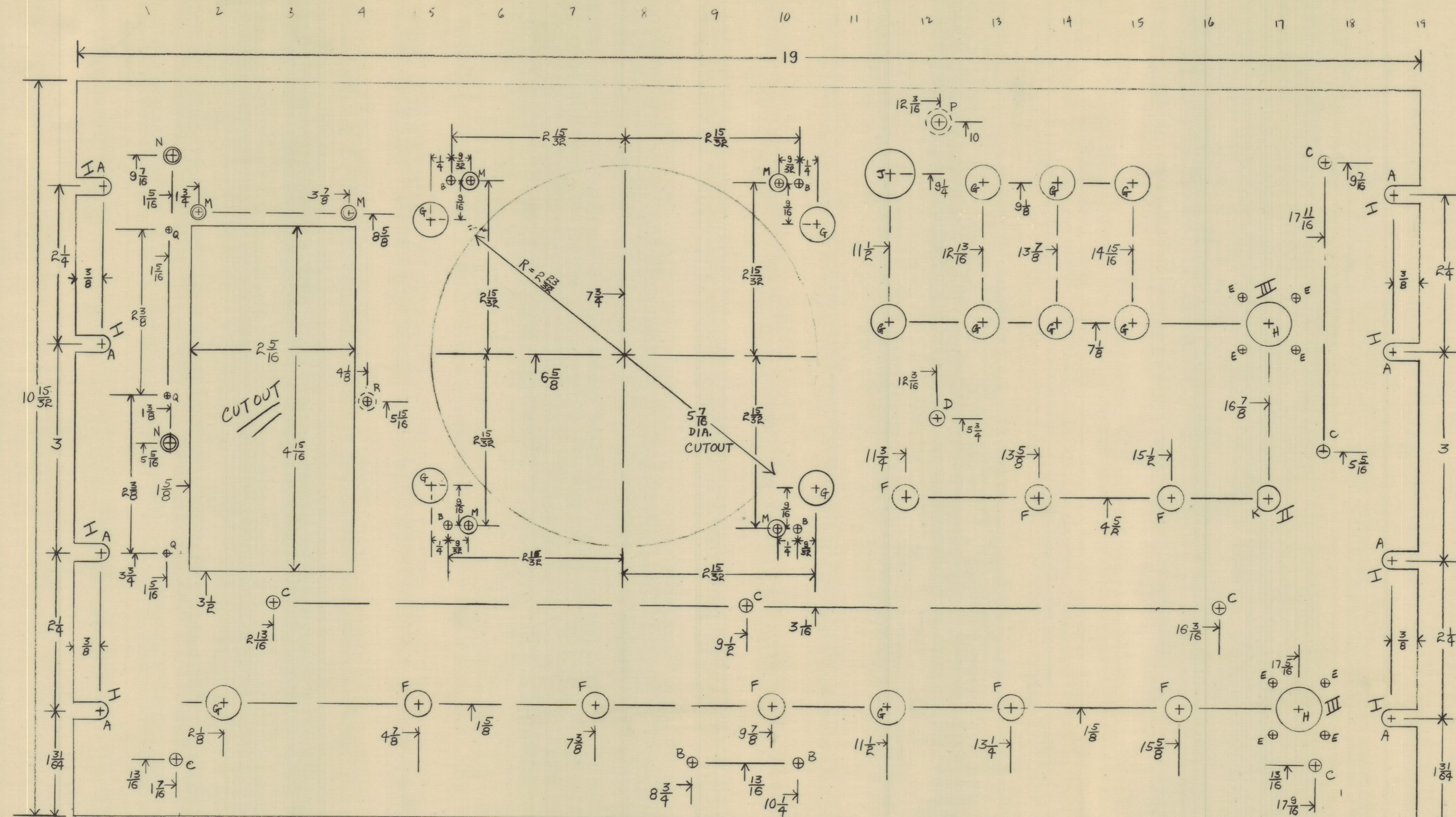
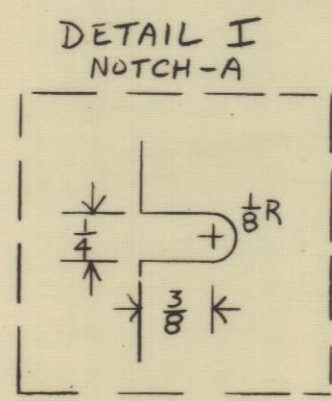


| REVISIONS | | | | | | |
|-----------|-----|------------------|---------|------------|-------|------|
| ZONE | SYM | DESCRIPTION | DATE | E.M.N. NO. | DRAFT | CHKD |
| | | ORIGINAL RELEASE | 1/10/69 | | | |

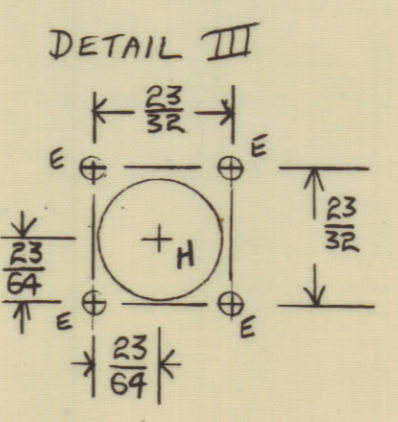
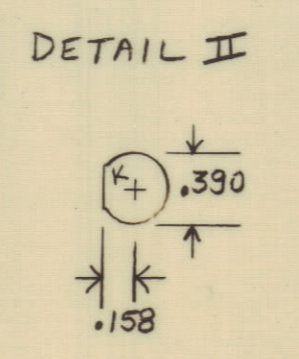


| KEY | DESCRIPTION | QTY. | KEY | DESCRIPTION | QTY. |
|-----|----------------|------|-----|---------------|------|
| A | NOTCH-DETAIL I | 8 | G | 1/8" HOLE | 13 |
| B | #22 DRILL | 6 | H | 3/8" HOLE | 2 |
| C | 3/16" DRILL | 7 | J | 1/8" HOLE | 1 |
| D | 1/32" DRILL | 1 | K | SEE DETAIL II | 1 |
| E | #27 DRILL | 8 | M | 6-32 CKS | 6 |
| F | 3/8" HOLE | 8 | N | 8-32 CKS | 2 |
| | | | P | 10-32 CKS | 1 |
| | | | Q | R-56 TAP | 3 |
| | | | R | SEE NOTE III | 1 |

NOTE III
 R HOLE FOR INSTALLATION OF AMATOM STANDOFF (SWAGE-IN) #4813 TO BE SUPPLIED BY SWAGE-IN-ON REAR OF PANEL AND TO BE FLUSH WITH FRONT OF PANEL



MATERIAL - 3/16" ALUMINUM 5052-H32



MS4345

| REQ'D. | ITEM | PART NUMBER | DESCRIPTION | SYMBOL |
|---|------|--|-------------|-----------------|
| LIST OF MATERIAL | | | | |
| MATERIAL | | THE TECHNICAL MATERIEL CORP. MAMARONECK, NEW YORK | | |
| FINISH | | TITLE PANEL, FRONT | | |
| UNLESS OTHERWISE SPECIFIED DIMENSIONS ARE IN INCHES AND INCLUDE CHEMICALLY APPLIED OR PLATED FINISHES | | DRAWN | DATE | FINAL APPROVAL |
| DECIMALS .XX ± .01 | | CHECKED | DATE | DATE 6/19/69 |
| FRACTIONS ± 1/64 | | ELECT. DES. | DATE | |
| ANGLES ± 0° 30' | | MECH. DES. | DATE | MS4345 |
| TOLERANCES ± .005 | | SHEET | | REV. LTR. |

FSA-3
 MODEL USED ON
 S401- (810518a)

NOTES

THE CONTENTS OF THIS DRAWING ARE THE EXCLUSIVE PROPERTY OF THE TECHNICAL MATERIEL CORP. ITS UNAUTHORIZED USE OR REPRODUCTION IN WHOLE OR IN PART IS STRICTLY FORBIDDEN.

DATE
 DATE
 DATE
 DATE