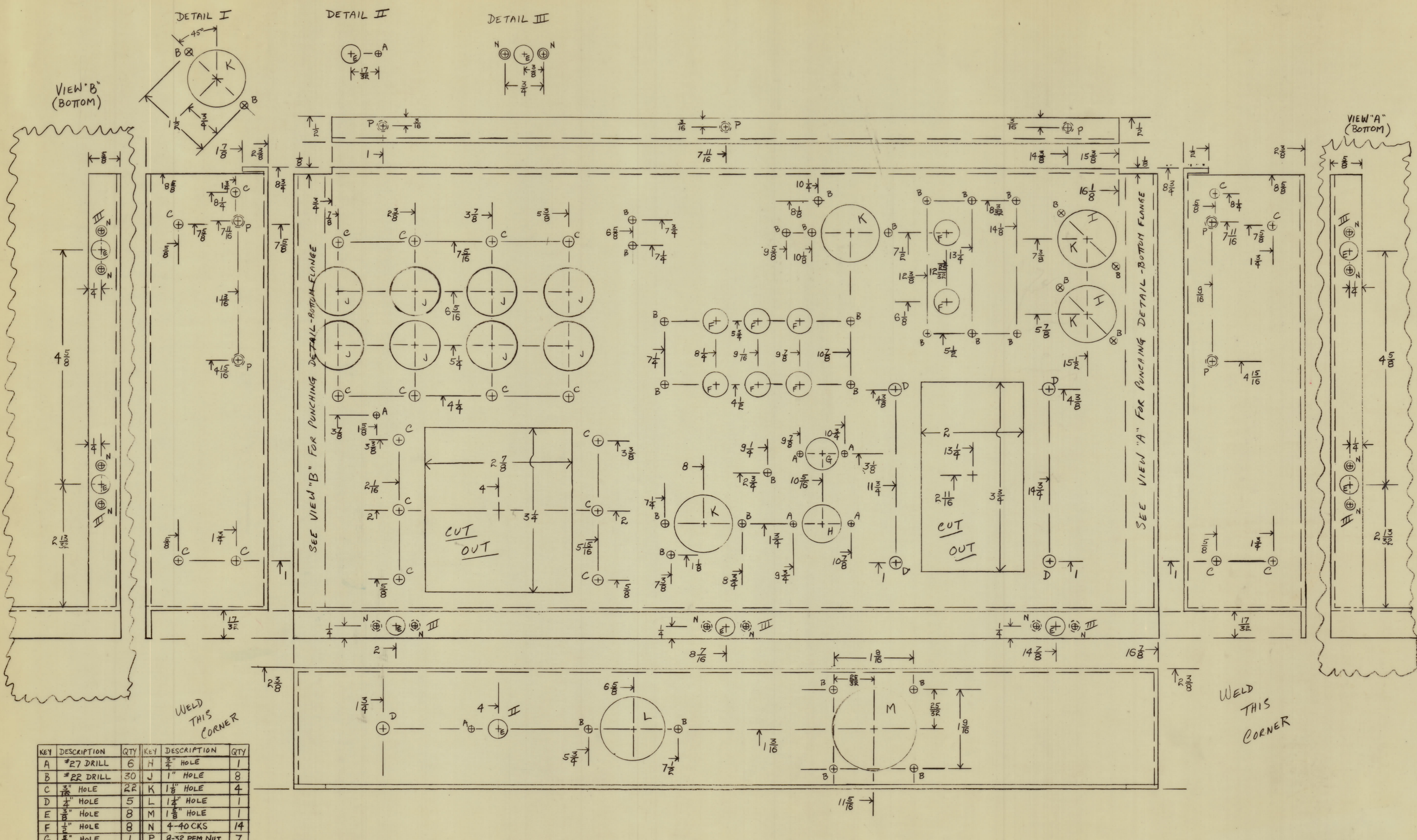


ZONE		SYM	DESCRIPTION	DATE	E.M.N. NO.	DRAFT	CHKD	APPD
11			ORIGINAL RELEASE	6/19/69				



KEY	DESCRIPTION	QTY	KEY	DESCRIPTION	QTY
A	#27 DRILL	6	H	3/8" HOLE	1
B	#22 DRILL	30	J	1" HOLE	8
C	1/8" HOLE	22	K	1 1/8" HOLE	4
D	1/4" HOLE	5	L	1 1/4" HOLE	1
E	3/8" HOLE	8	M	1 3/8" HOLE	1
F	1/2" HOLE	8	N	4-40 CKS	14
G	5/8" HOLE	1	P	8-32 PEM NUT	7

ALUMINUM - PEM NUTS - ON INSIDE OF CHASSIS
 MATERIAL - .091 ALUMINUM 5052-H32
 FINISH - #14 IRIDITE

FSA-3

QTY/UNIT	MODEL USED ON	ASSY. NO.
SCALE	CODE	8401 - (E1057a)

THE CONTENTS OF THIS DRAWING ARE THE EXCLUSIVE PROPERTY OF THE TECHNICAL MATERIEL CORP. ITS UNAUTHORIZED USE OR REPRODUCTION IN WHOLE OR IN PART IS STRICTLY FORBIDDEN.

REQ'D.	ITEM	PART NUMBER	DESCRIPTION	SYMBOL
LIST OF MATERIAL				
MATERIAL				
THE TECHNICAL MATERIEL CORP. MAMARONECK, NEW YORK				
FINISH				
TITLE				
CHASSIS, POWER SUPPLY				
UNLESS OTHERWISE SPECIFIED DIMENSIONS ARE IN INCHES AND INCLUDE CHEMICALLY APPLIED OR PLATED FINISHES		DRAWN	DATE	FINAL APPROVAL
DECIMALS .X ± .05 .XX ± .01 .XXX ± .005		CHECKED	DATE	DATE
FRACTIONS 1/8 ± .005 1/16 ± .005 1/32 ± .005		ELECT. DES.	DATE	DATE
TOLERANCES		MECH. DES.	DATE	DATE
				MS4344
				6/19/69

NOTES

MS4344