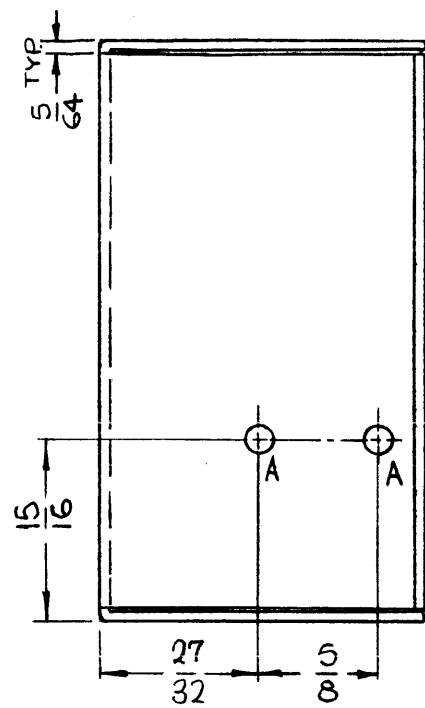
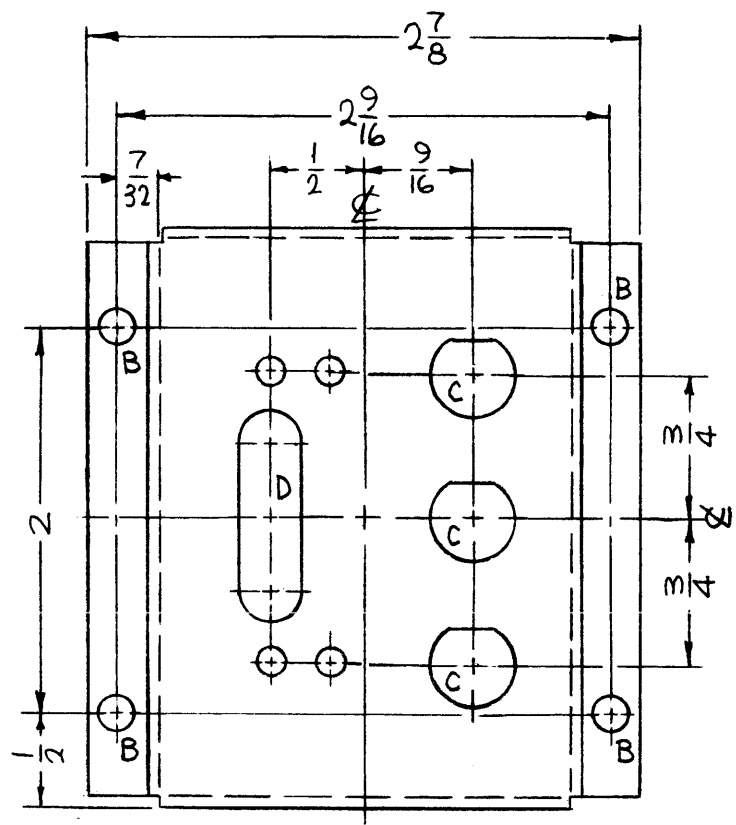
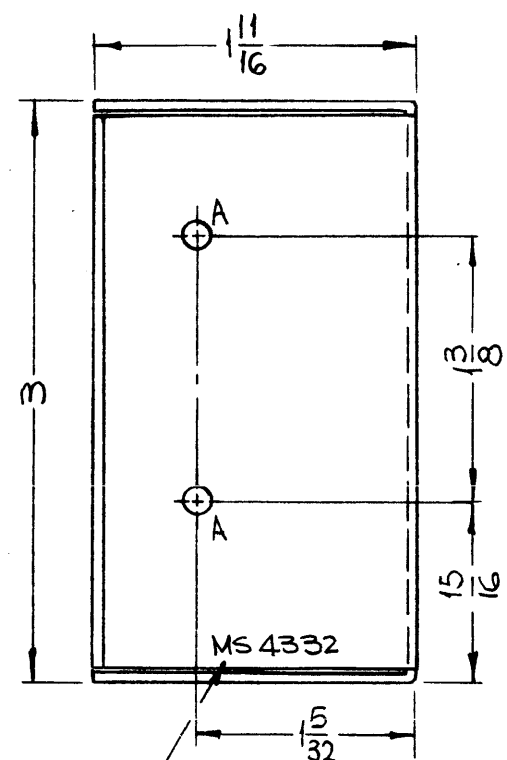


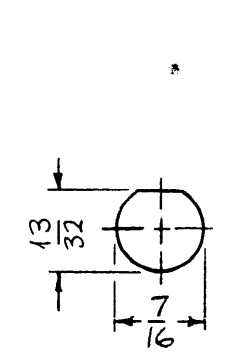
MS4332

REVISIONS

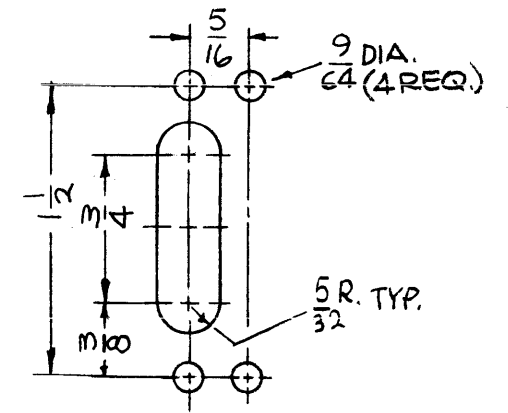
SYM	DESCRIPTION	DATE	E.M.N. NO.	DRAFT	CHKD	APPD
X	EXP. RELEASE	2-26-65	X	SRG		
Ø	ORIGINAL RELEASE FOR PRODUCTION	3-2-65	Ø	SRG		



HOLES	DESCRIPTION	REQ.
A	9/64 DIA.	4
B	11/64 DIA.	6
C	SEE DETAIL	3
D	SEE DETAIL	1

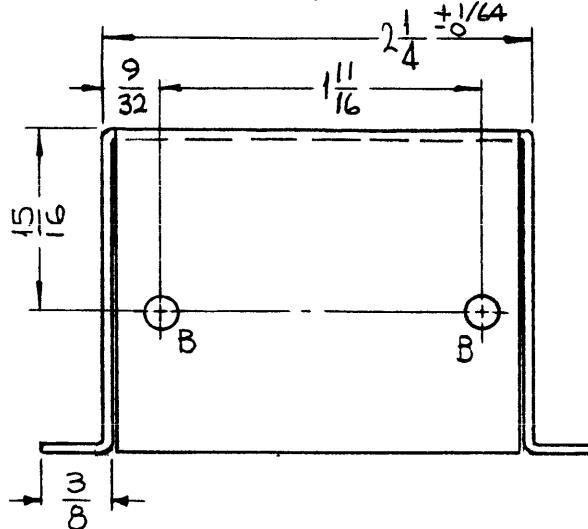


C-DETAIL



D-DETAIL

METAL STAMP TMC PART NO. 1/8 HIGH GOTHIC W/LATEST REV. LETTER.



REF: LD 1774

REQ'D.	ITEM	PART NUMBER	DESCRIPTION	SYMBOL
F. BUDETTI LIST OF MATERIAL				
MATERIAL .064 THICK ALUMINUM 5052-H32			THE TECHNICAL MATERIEL CORP. MAMARONECK, NEW YORK	
FINISH S404 YEL. IRIDITE			TITLE CHASSIS, MAIN	
UNLESS OTHERWISE SPECIFIED DIMENSIONS ARE IN INCHES AND INCLUDE CHEMICALLY APPLIED OR PLATED FINISHES			DRAWN SRG	DATE 2-26-65
			CHECKED JES	DATE
			FINAL APPROVAL RDC	
			DATE 3/2/65	DATE
			MS4332	
			DATE 3/2/65	DATE
			SHEET	
			REV. LTR.	

- UNLESS OTHERWISE SPECIFIED:
1. USE MATERIAL THICKNESS FOR MAXIMUM RADIUS ON ALL BENDS
  2. ALL ANGULAR BENDS 90 DEGREES
  3. REMOVE ALL BURRS AND SHARP EDGES

NOTES

1	KIT-216	AX-546
1	KIT-215	AX-546
Q'TY./UNIT	MODEL USED ON	ASS'Y. NO.
SCALE 1:1	CODE A	
THE CONTENTS OF THIS DRAWING ARE THE EXCLUSIVE PROPERTY OF THE TECHNICAL MATERIEL CORP. ITS UNAUTHORIZED USE OR REPRODUCTION IN WHOLE OR IN PART IS STRICTLY FORBIDDEN.		

DECIMALS	TOLERANCES	FRACTIONS
.X ± .05		± 1/64
.XX ± .01		ANGLES ± 0° 30'
.XXX ± .005		