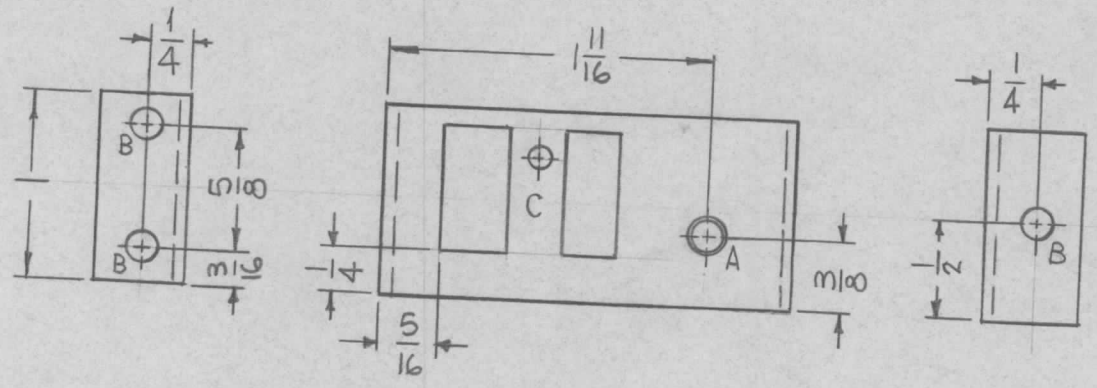
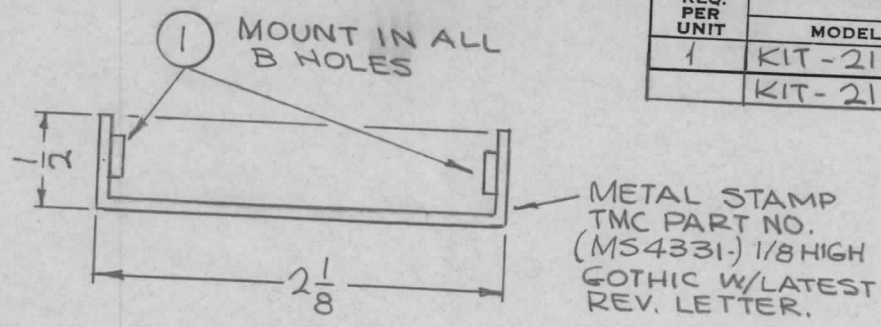
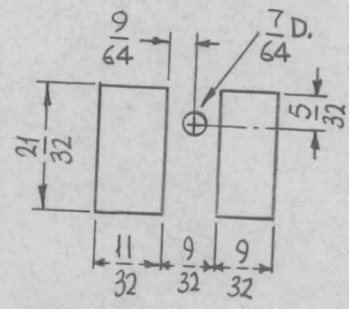


REQ. PER UNIT	USED ON		
	MODEL	ASS'Y. NO.	DATE
1	KIT-215	AX-546	2-25-65
	KIT-216	AX-546	2-25-65

MS4331 \emptyset



HOLES	DESCRIPTION	REQ.
A	.159±.002 BREAK TOP EDGES ONLY	1
B	.161-.164 DIA.	3
C	SEE DETAIL	1



C-DETAIL

- UNLESS OTHERWISE SPECIFIED:
1. USE MATERIAL THICKNESS FOR MAXIMUM RADIUS ON ALL BENDS
 2. ALL ANGULAR BENDS 90 DEGREES
 3. REMOVE ALL BURRS AND SHARP EDGES
 4. MOUNT INSERTS AFTER FINISHING

REF: LD1773.

\emptyset	ORIGINAL RELEASE FOR PRODUCTION	3-2-65	\emptyset	SRG					3	1	NT129-440-4	NUT, PLAIN, SPLINE	B				
X	EXP. RELEASE	2-25-65	X	SRG					REQ. ITEM	PART NO.	F.BUDETTI	DESCRIPTION	SYMBOL				
UNLESS OTHERWISE SPECIFIED DIMENSIONS ARE IN INCHES AND INCLUDE CHEMICALLY APPLIED OR PLATED FINISHES		DATE	CH. NO.	DRAFTS	CHECKER	ENG. APP.	SCALE	1:1	.064 THICK STOCK SIZE		THE TECHNICAL MATERIEL CORP. MAMARONECK. NEW YORK						
DECIMALS .X ± .05 .XX ± .01 .XXX ± .005		FRACTIONS ± 1/64 ANGLES ± 0° 30'		TOLERANCES		CODE	A	ALUMINUM MATERIAL		BRACKET, MTG. RELAY							
5052-H32		SRG		SRG		SRG		TYPE & TEMPER		HEAT TREAT. SPEC.		DRAWN		CHECKED		FINAL APPROVAL	
5404 YEL. IRIDITE		SRG		SRG		SRG		FINISH & SPEC. NO.		ELEC. DES. APP.		MECH. DES. APP.		MS4331 \emptyset			