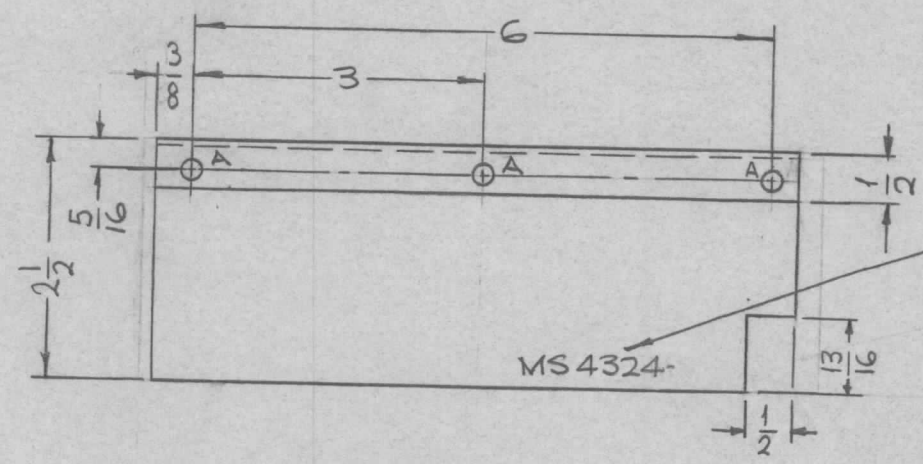
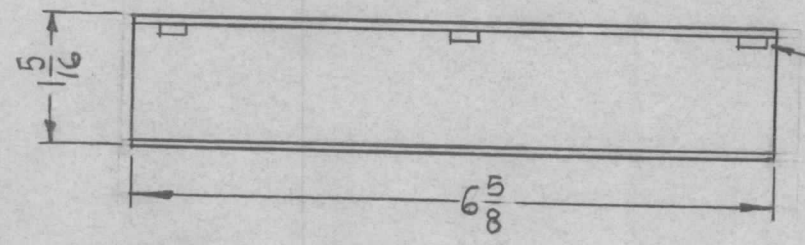


REQ. PER UNIT	USED ON			MS4324	Ø
	MODEL	ASS'Y. NO.	DATE		
1	RFTA-1		1-7-65		



HOLES:  
A ~ .191-.194 DIA. — 3REQ.

MARK STAMP TRI PART II  
TMC PART NO.  
1/8 HIGH GOTHIC  
W/LATEST REV.  
LETTER,



UNLESS OTHERWISE SPECIFIED:

1. USE MATERIAL THICKNESS FOR MAXIMUM RADIUS ON ALL BENDS
2. ALL ANGULAR BENDS 90 DEGREES
3. REMOVE ALL BURRS AND SHARP EDGES
4. MOUNT INSERTS AFTER FINISHING

Ø	ORIGINAL RELEASE FOR PRODUCTION	6.23.66	#	WHD			3	1	NT129-632-4	NUT, PLAIN, SPLINE	A
X1	CUTOUT ADDED, 6 7/8 WAS 7	1-15-65	x1	SRG					.054 THICK	F. BUDETTI	DESCRIPTION
X	EXP. RELEASE	1-7-65	X	SRG					ALUMINUM	THE TECHNICAL MATERIEL CORP. MAMARONECK, NEW YORK	
SYM	DESCRIPTION	DATE	CH. NO.	DRAFTS	CHECKER	ENG. APP.			MATERIAL	SHIELD, CAPACITORS	
UNLESS OTHERWISE SPECIFIED DIMENSIONS ARE IN INCHES AND INCLUDE CHEMICALLY APPLIED OR PLATED FINISHES						SCALE	1/2:1		5052-H32	SRG	QCB
TOLERANCES		FRACTIONS		CODE			TYPE & TEMPER		HEAT TREAT. SPEC.	DRAWN	CHECKED
.X ± .05 .XX ± .01 .XXX ± .005		± 1/64 ANGLES ± 0° 30'		A			S404 YELLOW IRIDITE		QA - 6/24/66		
							FINISH & SPEC. NO.		ELEC. DES. APP.	MECH. DES. APP.	FINAL APPROVAL
											MS4324
											Ø