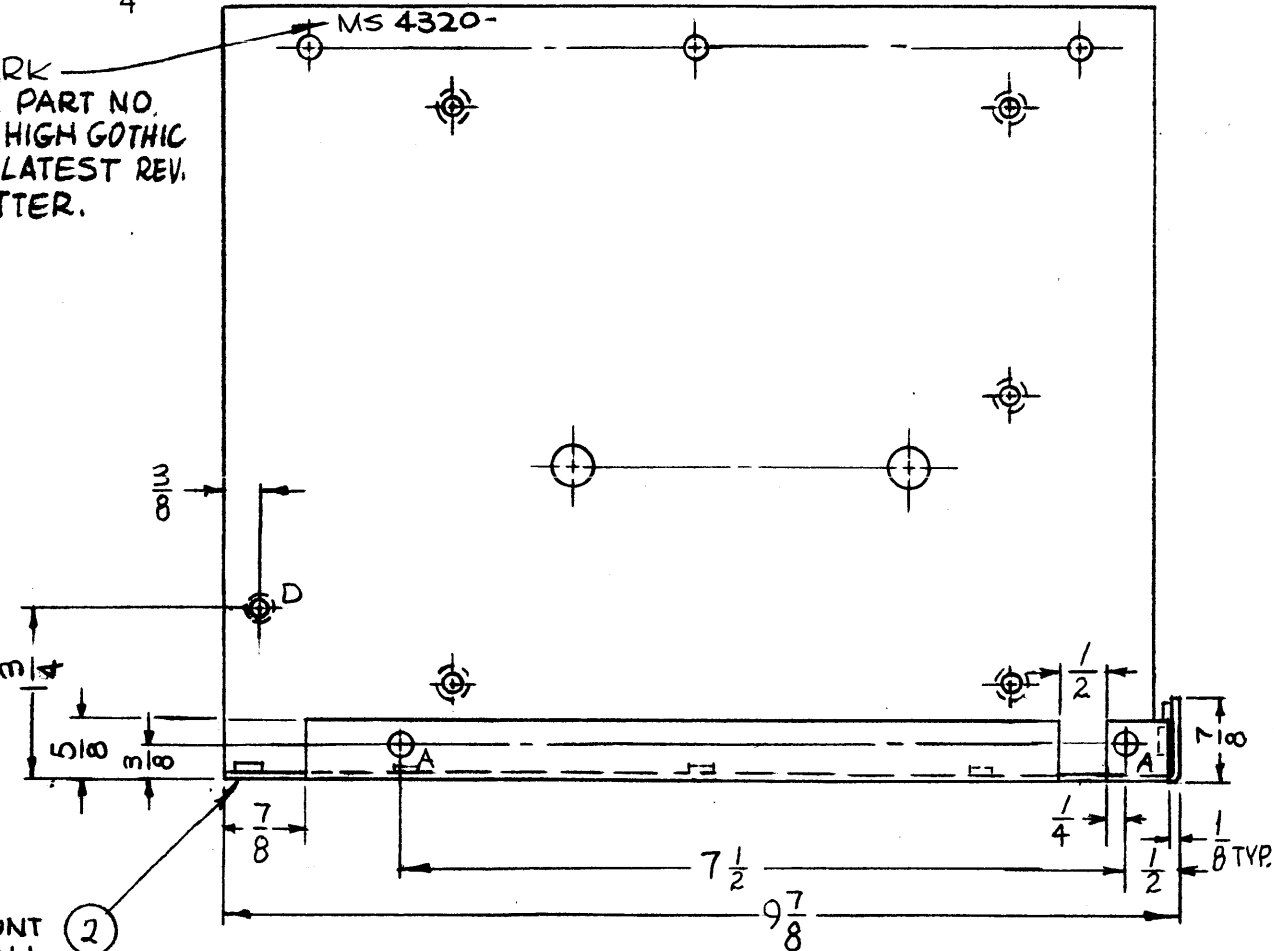


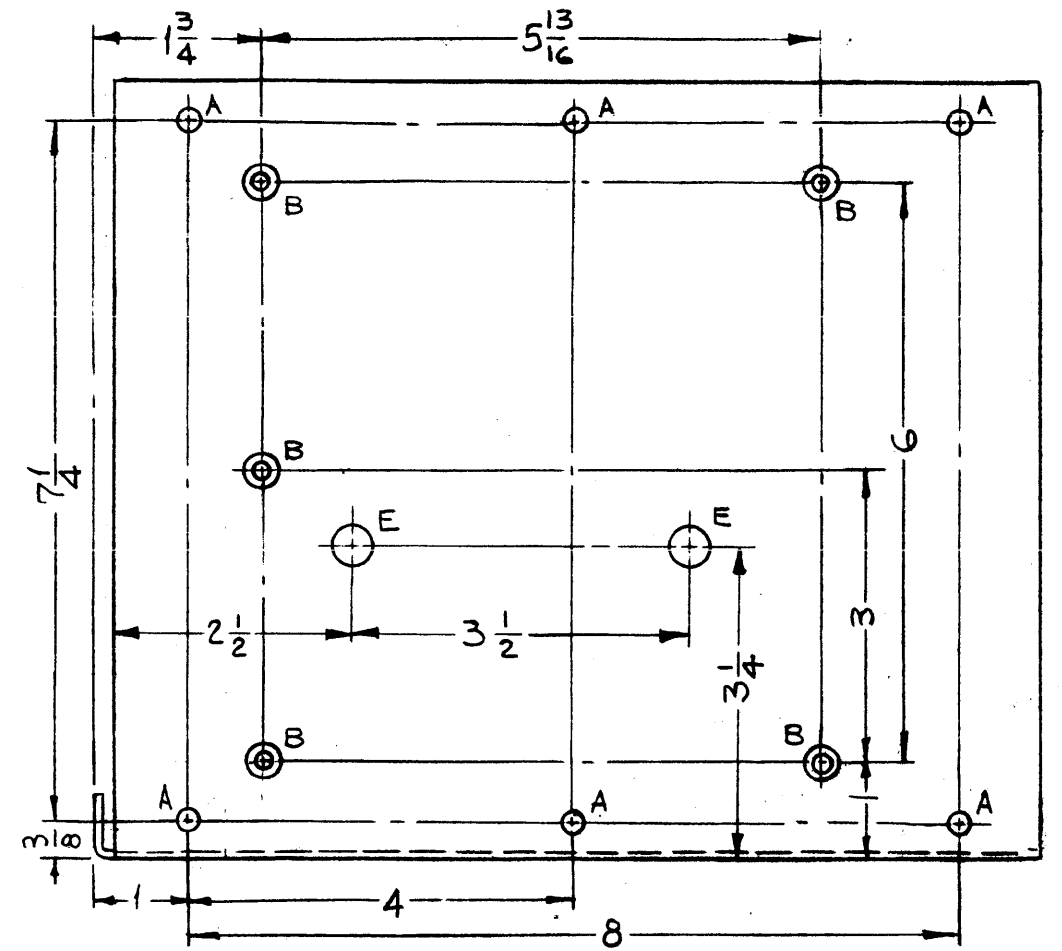
MS4320

| REVISIONS |  |         |            |       |           |
|-----------|--|---------|------------|-------|-----------|
| SYM       | DESCRIPTION  | DATE    | E.M.N. NO. | DRAFT | CHKD APPD |
| X         | EXPERIMENTAL RELEASE   | 12-3-64 | X          | SRG   |           |
| X1        | CUTOUT ENLARGED, DIM 7 WAS 8, CUT 1" OFF LIP, 2"A WERE 13/16 | 1-6-65  | X1         | SRG   |           |
| X2        | C HOLES ADDED  | 1-18-65 | X2         | SRG   |           |
| X3        | D HOLES ADDED  | 1-22-65 | X3         | SRG   |           |
| X4        | 7/8 LIP WAS 5/8 & HOLES RAISED 1/4                           | 1-27-65 | X4         | SRG   |           |
| X5        | 2"E" HOLES ADDED   | 4-21-65 | X5         | JB    |           |
| X6        | 1/2 X 5/8 SLOT ADDED A HOLE DIM. ADJ. FR. 1 TO 1/2           | 5-12-65 | X6         | NO    |           |
| X7        | 1"D HOLE DELETED, LIP DELETED FROM FAR LEFT                  | 9-14-65 | X7         | NO    |           |
| Ø         | ORIGINAL RELEASE FOR PRODUCTION                              | 6.23.66 | Ø          | WTD   |           |

MARK TMC PART NO. 1/8 HIGH GOTHIC W/LATEST REV. LETTER.



MOUNT IN ALL "A" HOLES ①



MOUNT IN ALL C HOLES ②

| HOLES | DESCRIPTION                          | REQ. |
|-------|--------------------------------------|------|
| A     | .221-.224 DIA.                       | 10   |
| B     | DR. .169 DIA. C'SINK 82° X .337 DIA. | 7    |
| C     | .191-.194 DIA.                       | 4    |
| D     | DR. .144 DIA. C'SINK 82° X .284 DIA. | 1    |
| E     | 3/8 DIA.                             | 2    |

- UNLESS OTHERWISE SPECIFIED:
- USE MATERIAL THICKNESS FOR MAXIMUM RADIUS ON ALL BENDS
  - ALL ANGULAR BENDS 90 DEGREES
  - REMOVE ALL BURRS AND SHARP EDGES
  - MOUNT INSERTS AFTER FINISHING

NOTES

|             |               |           |
|-------------|---------------|-----------|
| 1           | RFTA-1        |           |
| QTY./UNIT   | MODEL USED ON | ASSY. NO. |
| SCALE 1/2:1 | CODE A        |           |

THE CONTENTS OF THIS DRAWING ARE THE EXCLUSIVE PROPERTY OF THE TECHNICAL MATERIEL CORP. ITS UNAUTHORIZED USE OR REPRODUCTION IN WHOLE OR IN PART IS STRICTLY FORBIDDEN.

| REQ'D. | ITEM | PART NUMBER | DESCRIPTION        | SYMBOL |
|--------|------|-------------|--------------------|--------|
| 4      | 2    | NT129-632-4 | NUT, PLAIN, SPLINE | C      |
| 10     | 1    | NT129-832-4 | NUT, PLAIN, SPLINE | A      |

F. BUDETTI LIST OF MATERIAL

MATERIAL: .064 THICK ALUMINUM 5052-H32

FINISH: S404 YELLOW IRIDITE

THE TECHNICAL MATERIEL CORP. MAMARONECK, NEW YORK

TITLE: BRACKET, BANDSWITCH, MTG.

|                         |                   |                             |               |
|-------------------------|-------------------|-----------------------------|---------------|
| DRAWN: SRG              | DATE: 12-3-64     | FINAL APPROVAL: [Signature] | DATE: 6/23/66 |
| CHECKED: [Signature]    | DATE: 6/20/66     |                             |               |
| ELECT. DES. [Signature] | DATE: 6/22/66     |                             |               |
| MECH. DES. [Signature]  | DATE: [Signature] |                             |               |

DECIMALS: .X ± .05, .XX ± .01, .XXX ± .005

FRACTIONS: ± 1/64, ANGLES: ± 0° 30'

TOLERANCES

MS4320

SHEET

REV. LTR.