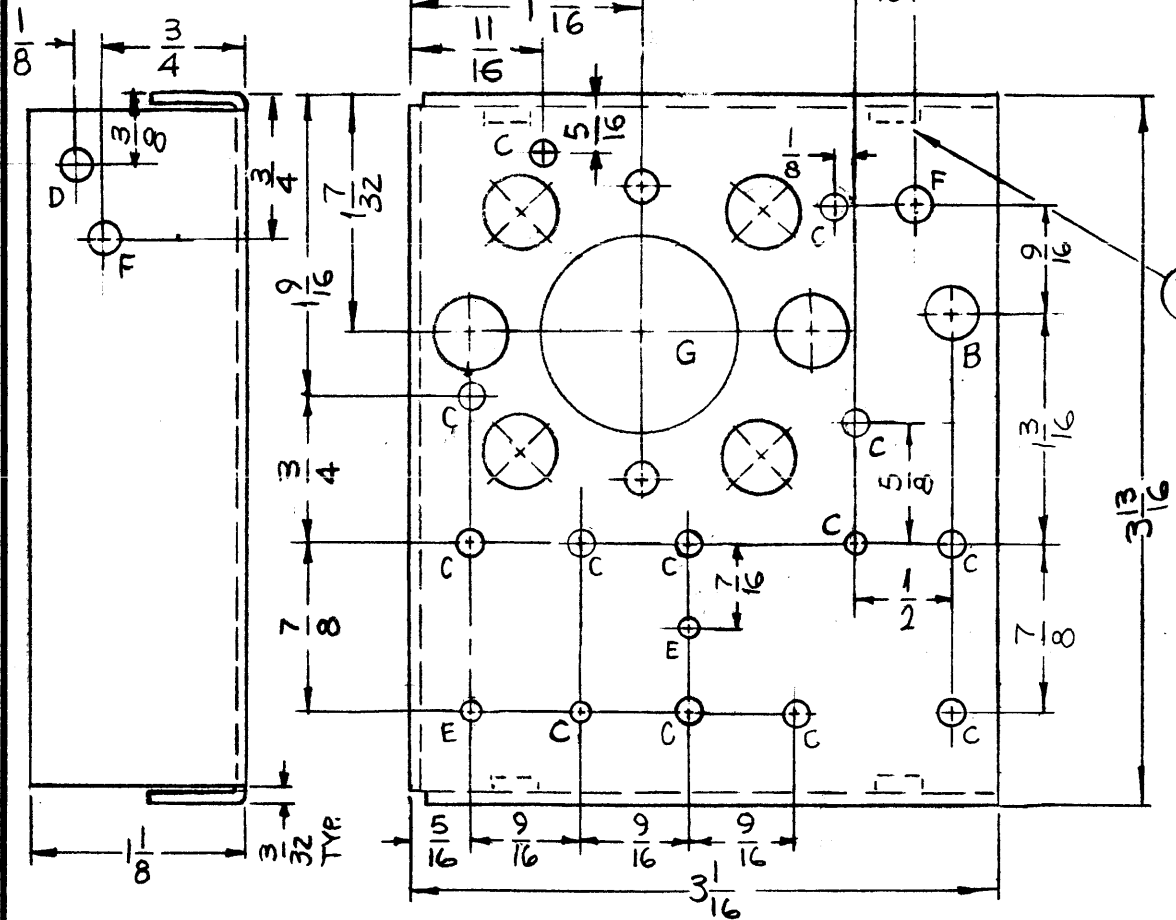
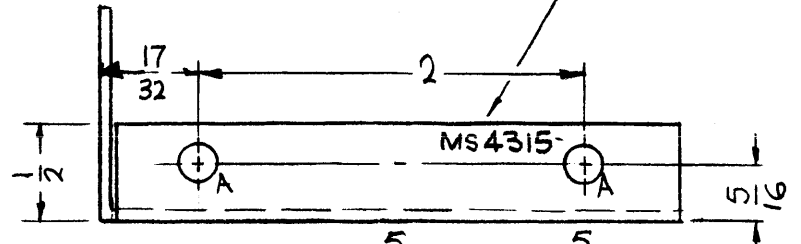


MS4315

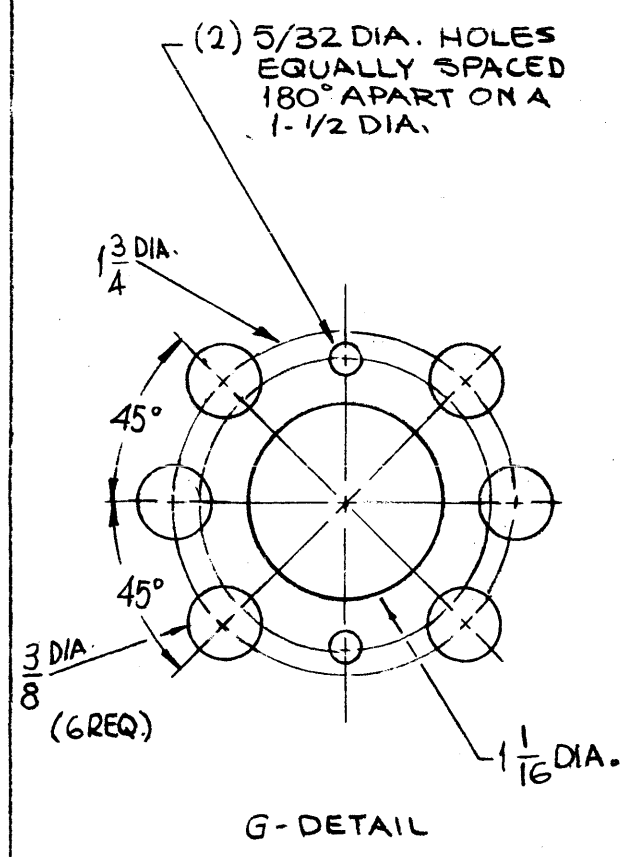
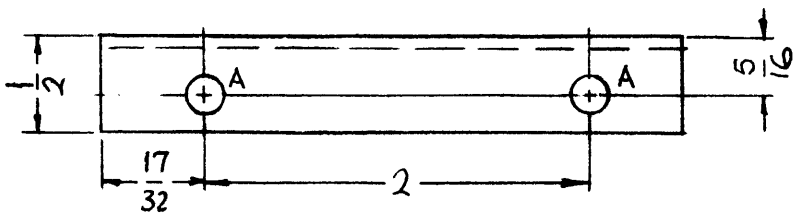
REVISIONS

SYM	DESCRIPTION	DATE	E.M.N. NO.	DRAFT	CHKD	APPD
X	EXP. RELEASE	12-8-64	X	SRG		
X1	B,C,D,E,F HOLES ADDED, 1-1/8 LIP ADDED	1-11-65	X1	SRG		
X2	3/8 HOLES WERE 1/4, E HOLES DIM 1/2 WAS 9/16, E HOLE MOVED	1-13-65	X2	SRG		
X3	B HOLE WAS 17/64	1-18-65	X3	SRG		
X4	5 C HOLES WERE C'SINK, 2C ADDED, H F J DELETED	6-8-65	X4	SRG		
X5	2 C HOLES WERE E HOLES - ONE C HOLE ADDED ONE E HOLE ADDED, ONE D HOLE RELOC, ON G DETAIL 1/16 WAS 1	7-9-65	X5	GDL		
Ø	ORIGINAL RELEASE FOR PRODUCTION	6.7.66	Ø	UW		

MARK TMC PART NO. 1/8 HIGH GOTHIC W/LATEST REV. LETTER.



1 MOUNT IN ALL 'A' HOLES.



HOLES	DESCRIPTION	REQ.
A	.191-.194 DIA.	4
B	5/16 DIA.	1
C	1/8 DIA.	13
D	.161 ±.002	1
E	3/32 DIA.	2
F	11/64 DIA.	2
G	SEE DETAIL	1

- UNLESS OTHERWISE SPECIFIED:
1. USE MATERIAL THICKNESS FOR MAXIMUM RADIUS ON ALL BENDS
  2. ALL ANGULAR BENDS 90 DEGREES
  3. REMOVE ALL BURRS AND SHARP EDGES
  4. MOUNT INSERTS AFTER FINISHING

4	1	NT129-632-4	NUT, PLAIN, SPLINE	A
REQ'D.	ITEM	PART NUMBER	DESCRIPTION	SYMBOL

F. BUDETTI LIST OF MATERIAL

MATERIAL: .064 THICK ALUMINUM 5052-H32

FINISH: SA04 YELLOW IRIDITE

TITLE: CHASSIS, DRIVER

THE TECHNICAL MATERIEL CORP. MAMARONECK, NEW YORK

UNLESS OTHERWISE SPECIFIED DIMENSIONS ARE IN INCHES AND INCLUDE CHEMICALLY APPLIED OR PLATED FINISHES		DRAWN: SRG	DATE: 12-8-64	FINAL APPROVAL: [Signature]	DATE: 6/7/66
DECIMALS: .X ± .05, .XX ± .01, .XXX ± .005	TOLERANCES	CHECKED: [Signature]	DATE:	ELECT. DES. [Signature]	DATE:
FRACTIONS: ± 1/64, ANGLES: ± 0° 30'		MECH. DES. [Signature]	DATE:	MS4315	Ø
		SHEET		REV. LTR.	

NOTES

THE CONTENTS OF THIS DRAWING ARE THE EXCLUSIVE PROPERTY OF THE TECHNICAL MATERIEL CORP. ITS UNAUTHORIZED USE OR REPRODUCTION IN WHOLE OR IN PART IS STRICTLY FORBIDDEN.

1	RFTA-1	
QTY./UNIT	MODEL USED ON	ASS'Y. NO.
SCALE: III	CODE: A	

REF: LD 1766