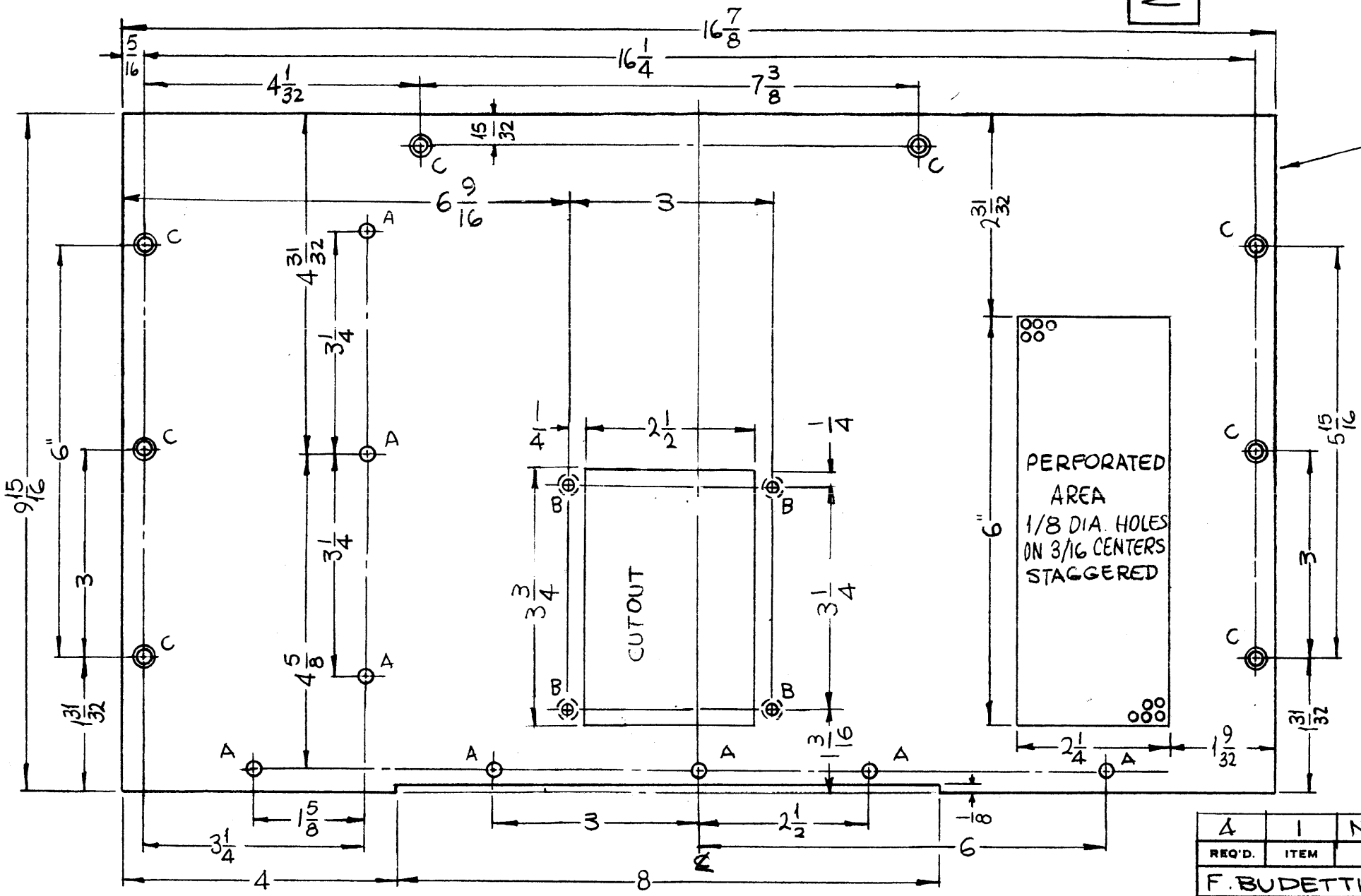


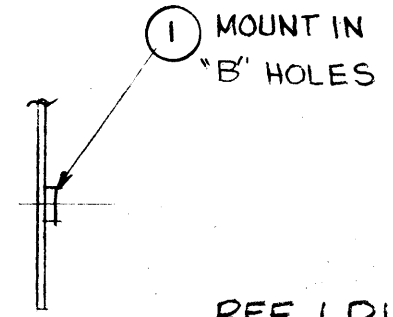
MS4312

REVISIONS

SYM	DESCRIPTION	DATE	E.M.N. NO.	DRAFT	CHKD	APPD
X	EXP. RELEASE	1-18-65	X	SRG		
X1	16 1/4 WAS 16 5/16, 16 7/8 WAS 16 5/16	1-28-65	X	SRG		
X2	8 "C" HOLES WERE "A" HOLES - "B" HOLES & CUTOUT ADDED	5-17-65	X2	G.D.L.		
X3	DIM 6 9/16 WAS 6-13/16, 2 3 WAS 2 1/2, 2 1/2 WAS 2, FOR CUTOUT	5-25-65	X3	SRG		
X4	1/8 DIA HOLES ON 3/16 CENTERS ADDED TO PERFOR	7-28-65	X4	SRG		
Ø	ORIGINAL RELEASE FOR PRODUCTION	4-12-66	Ø	G.D.L.		



HOLE	DESCRIPTION	REQ.
A	3/16 DIA.	8
B	.164 - .161 DIA.	4
C	.144 DIA & C'SINK 82° TO .284 DIA	8



REQ'D.	ITEM	PART NUMBER	DESCRIPTION	SYMBOL
A	1	NT 129-4-40-3	NUT, PLAIN SPLINE	B

F. BUDETTI LIST OF MATERIAL

MATERIAL: .054 THICK ALUMINUM 5052-H32

FINISH: S404 YELLOW IRIDITE

TITLE: COVER, CHASSIS, BOTTOM

THE TECHNICAL MATERIEL CORP. MAMARONECK, NEW YORK

1	RFTA-1	A5348
QTY./UNIT	MODEL USED ON	ASS'Y. NO.
SCALE 1/2:1	CODE A	

THE CONTENTS OF THIS DRAWING ARE THE EXCLUSIVE PROPERTY OF THE TECHNICAL MATERIEL CORP. ITS UNAUTHORIZED USE OR REPRODUCTION IN WHOLE OR IN PART IS STRICTLY FORBIDDEN.

UNLESS OTHERWISE SPECIFIED DIMENSIONS ARE IN INCHES AND INCLUDE CHEMICALLY APPLIED OR PLATED FINISHES	DRAWN SRG	DATE 1-18-65	FINAL APPROVAL	DATE 4/7/66
DECIMALS .X ± .05 .XX ± .01 .XXX ± .005	CHECKED	DATE 4/6/66	MS4312	Ø
FRACTIONS ± 1/64 ANGLES ± 0° 30'	ELECT. DES. aa	DATE 4/7/66		
TOLERANCES	MECH. DES. Ø B	DATE	SHEET	REV. LTR.

NOTES