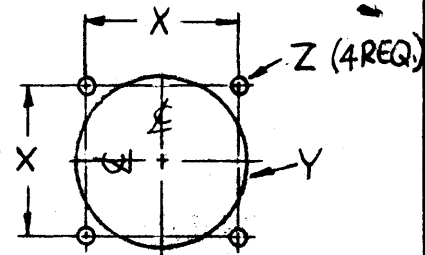
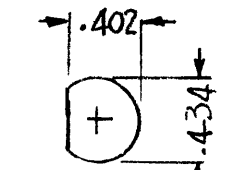
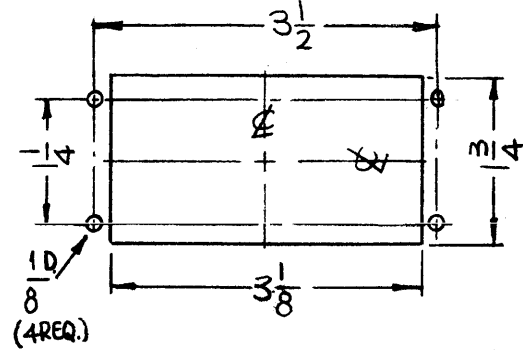


REVISIONS					
SYM	DESCRIPTION	DATE	E.M.N. NO.	DRAFT	CHKD APPD
X	EXPERIMENTAL RELEASE	12-21-64	X	SRG	
X1	COMPLETELY REVISED	1-12-65	X1	SRG	
X2	1.9/16 DIM WAS 2-1/2, 0 HOLES WERE 9/32 C HOLES	1-18-65	X2	SRG	
X3	L HOLES ADDED	1-26-65	X3	SRG	
X4	B HOLES ON TOP LIP WERE FASTENERS, 5/16 WAS 9/32	1-26-65	X4	SRG	
X5	3/8 DIM WAS 3-3/8	1-10-65	X5	SRG	
X6	1 A HOLE ADDED	6-29-65	X6	SRG	
X7	"D" HOLES WERE 7/16 DIA	7-26-65	X7	SRG	
X8	A HOLES WERE 3/16 DIA., 1/2" TO "A" HOLE WAS 1"	8-31-65	X8	SRG	
Ø	ORIGINAL RELEASE FOR PRODUCTION	6.7.66	Ø	GHW	

HOLES	DESCRIPTION	REQ
A	13/64 DIA	17
B	.191-.194 DIA.	8
C	11/64 DIA.	3
D	SEE DETAIL	5
E	1/2 DIA.	1
F	1/8 DIA.	2

DETAIL	X	Y DIA	Z DIA.	REQ
G	29/32	7/8	1/8	1
H	1-9/16	1-13/16	.147	1
J	1-1/16	1-1/8	.120	1



MARK TMC PART NO. 1/8 HIGH GOTHIC W/LATEST REV. LETTER.

REF: LD 1760

REQ'D.	ITEM	PART NUMBER	DESCRIPTION	SYMBOL
8	1	NT129-632-4	NUT, PLAIN, SPLINE	B

F. BUDETTI		LIST OF MATERIAL	
MATERIAL	.081 THICK ALUMINUM 5052-H32	THE TECHNICAL MATERIEL CORP. MAMARONECK, NEW YORK	
FINISH	S404 YELLOW IRIDITE	TITLE PLATE, CHASSIS, REAR	

UNLESS OTHERWISE SPECIFIED DIMENSIONS ARE IN INCHES AND INCLUDE CHEMICALLY APPLIED OR PLATED FINISHES		DRAWN	SRG	DATE	12-21-64	FINAL APPROVAL		DATE	6/7/66
DECIMALS .X ± .05 .XX ± .01 .XXX ± .005		CHECKED		DATE	6-7-66	MS4309			
FRACTIONS ± 1/64 ANGLES ± 0° 30'		ELECT. DES.		DATE					
TOLERANCES		MECH. DES.		DATE	6/7/67				
				DATE	6/2/66				

- UNLESS OTHERWISE SPECIFIED:
1. USE MATERIAL THICKNESS FOR MAXIMUM RADIUS ON ALL BENDS
  2. ALL ANGULAR BENDS 90 DEGREES
  3. REMOVE ALL BURRS AND SHARP EDGES
  4. MOUNT INSERTS AFTER FINISHING

NOTES

RFTA-1		ASSY. NO.
QTY./UNIT	MODEL USED ON	
SCALE	CODE	
1/2:1	A	

THE CONTENTS OF THIS DRAWING ARE THE EXCLUSIVE PROPERTY OF THE TECHNICAL MATERIEL CORP. ITS UNAUTHORIZED USE OR REPRODUCTION IN WHOLE OR IN PART IS STRICTLY FORBIDDEN.