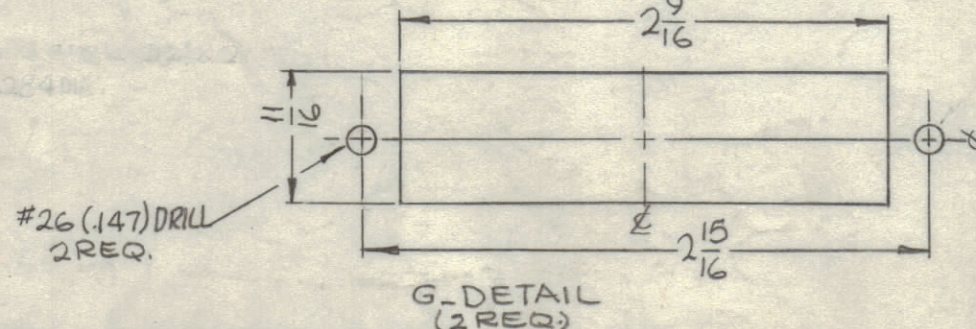
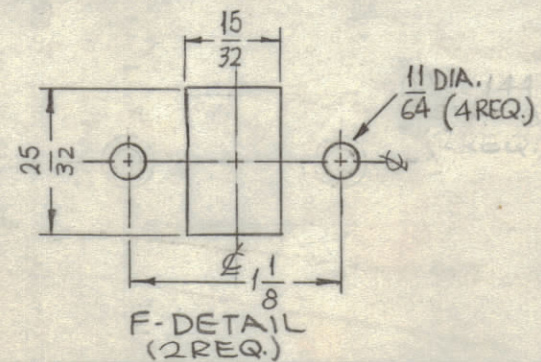
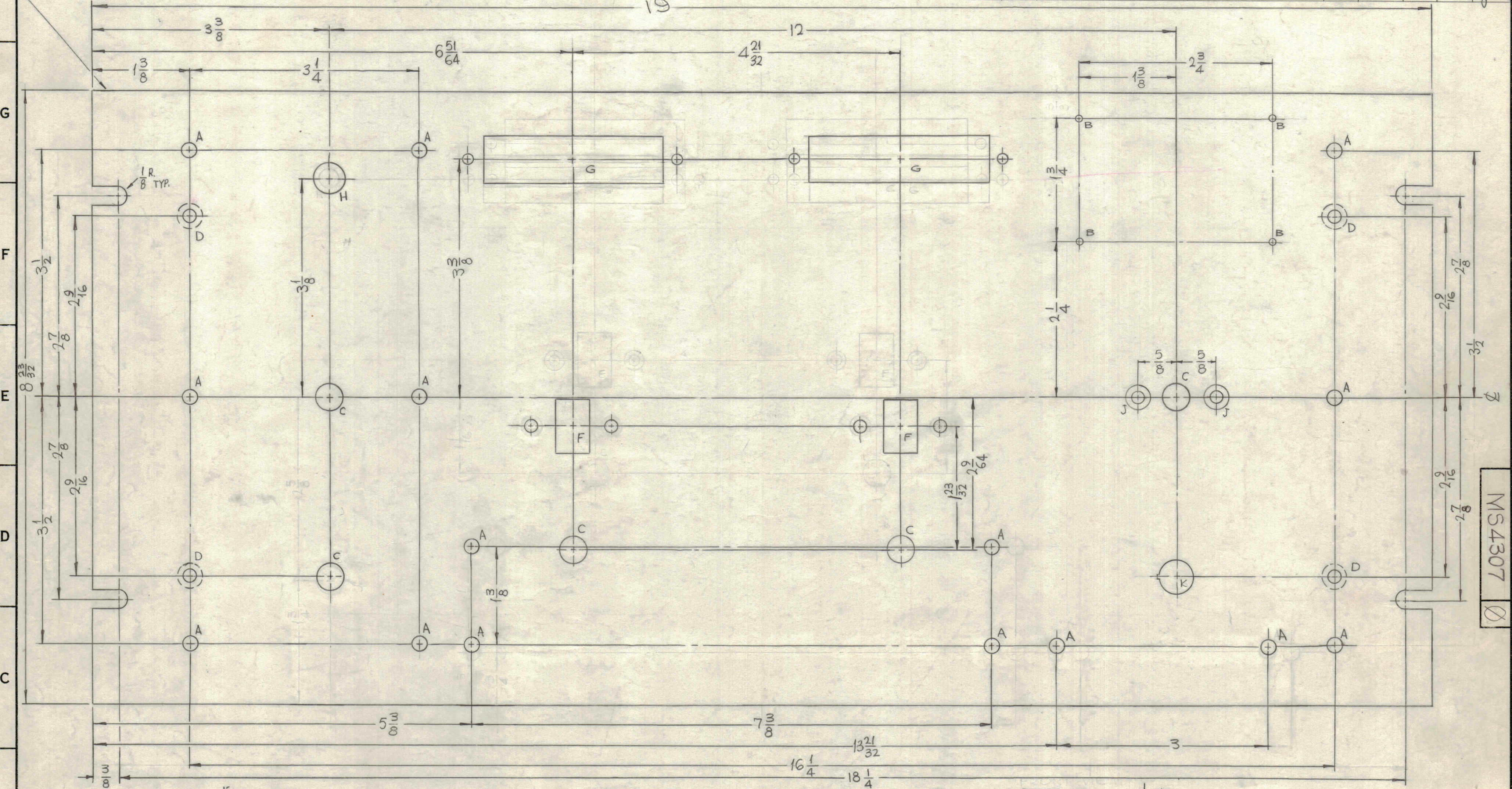
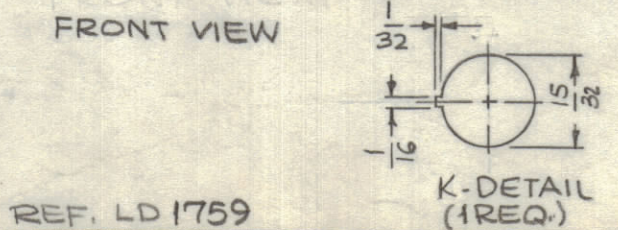


METAL STAMP TMC PART NO.
(MS4307) 1/8" HIGH GOTHIC
W/LATEST REV. LETTER,

REVISIONS						
ZONE	SYM	DESCRIPTION	DATE	E.M.N. NO.	DRAFT	CHKD
X		EXPERIMENTAL RELEASE	12-3-64	X	SRG	
X1		DIMS 65/64 WAS 71/8, 421/32 WAS 4, 29/64 WAS 17/16	12-31-64	X1	SRG	
X2		H HOLE ADDED	1-5-65	X2	SRG	
X3		H HOLE WAS 17/64 DIA.	1-11-65	X3	SRG	
X4		G SLOTS DIM WAS 31/8 FROM ϕ	1-20-65	X4	SRG	
X5		BOTTOM A HOLES WERE 3/4 FROM BOTTOM, J HOLES ADDED	1-27-65	X5	SRG	
\emptyset		ORIGINAL RELEASE FOR PRODUCTION	5-19-66		JC	



HOLES	DESCRIPTION	REQ.
A	13/64 DIA.	15
B	.078 DIA.	4
C	3/8 DIA.	5
D	DRILL .196 DIA. C'SINK 82° X .390 DIA.	4
H	7/16 DIA.	1
J	DRILL .169 DIA. C'SINK 82° X .337	2



MACHINING:

- MILL ALL EDGES.
- HOLES MUST BE DRILLED, UNLESS OTHERWISE SPECIFIED.
- LATERAL BOW OF PANEL MUST BE KEPT TO .031 TOLERANCE.
- PANEL MUST BE FREE OF ALL MACHINING MARKS, GOUGES AND SCRATCHES. IF NECESSARY, SAND FRONT OF PANEL WITH NO. 120 GRIT SANDPAPER.

FINISH NOTES:

- S404 - IRIDITE 14-2 AL-COAT.
- S114 - ZINC CHROMATE PRIMER FRONT AND EDGES ONLY
- S115 - SMOOTH GRAY ENAMEL

NOTES

THE CONTENTS OF THIS DRAWING ARE THE EXCLUSIVE PROPERTY OF THE TECHNICAL MATERIEL CORP. ITS UNAUTHORIZED USE OR REPRODUCTION IN WHOLE OR IN PART IS STRICTLY FORBIDDEN.

REQ'D. ITEM		PART NUMBER	DESCRIPTION	SYMBOL
F. BUDETTI LIST OF MATERIAL				
MATERIAL		3/16 THICK ALUMINUM 2024-T3		
FINISH		SEE NOTES		
TITLE		PANEL, FRONT		
DRAWN	SRG	DATE	12-7-64	FINAL APPROVAL
CHECKED	SRG	DATE	1/19/66	DATE
DATE	1/19/66	MS4307		
ELECT. DES.		SRG		
MECH. DES.		SRG		
DESCRIPTORS	TOLERANCES	FRACTIONS	ANGLES	REVISION
.XX ± .05		± 1/64	± 0° 30'	
.XXX ± .005				

MS4307