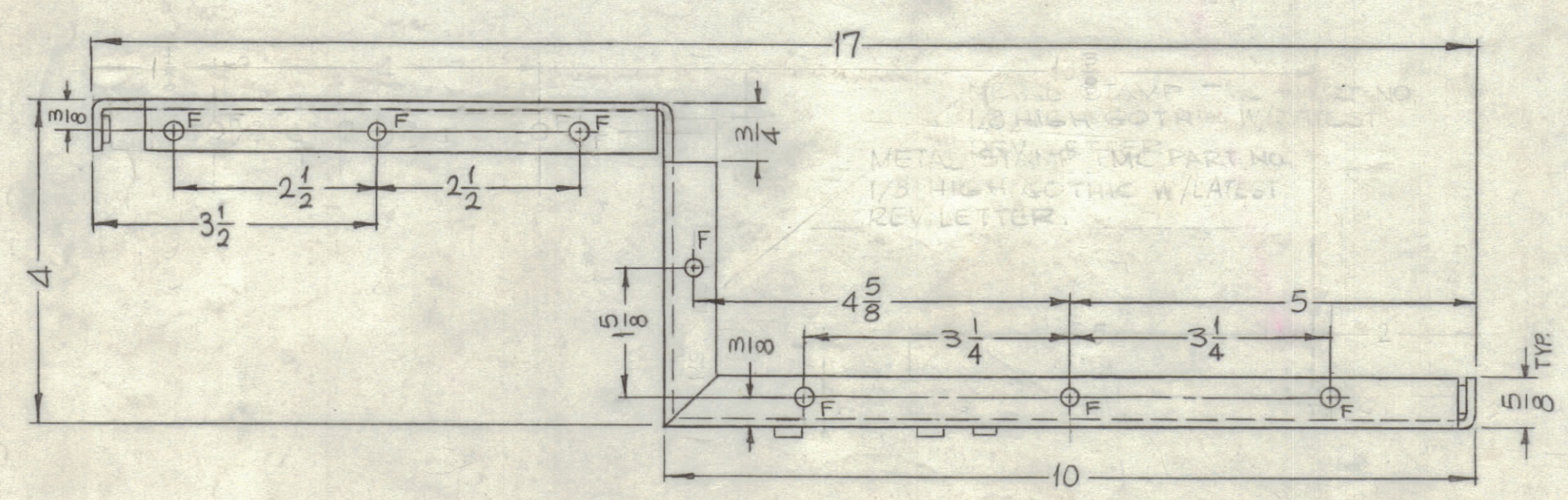
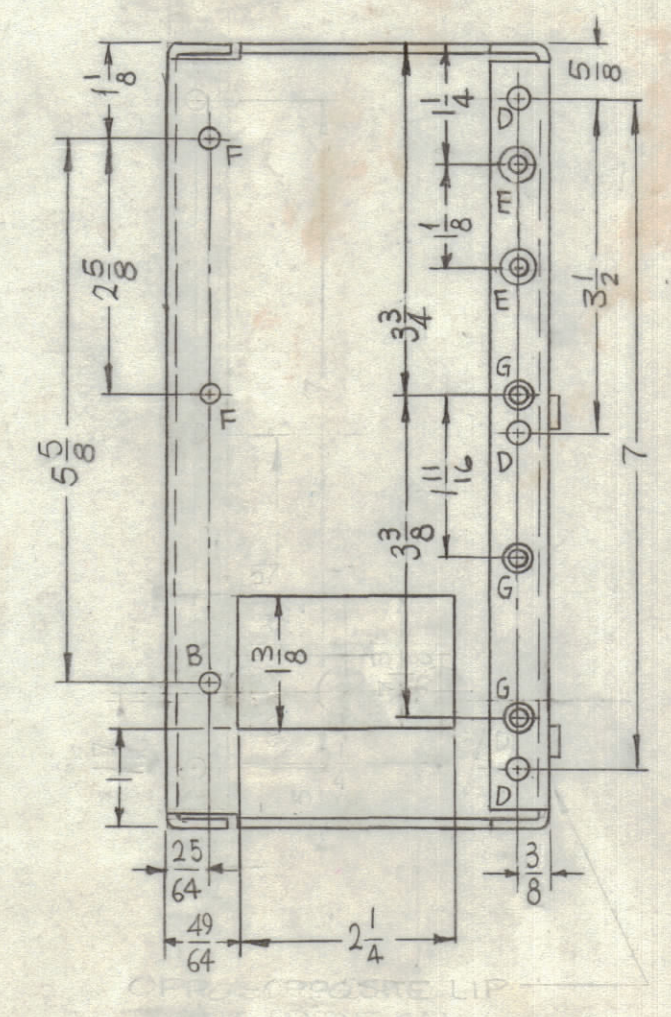
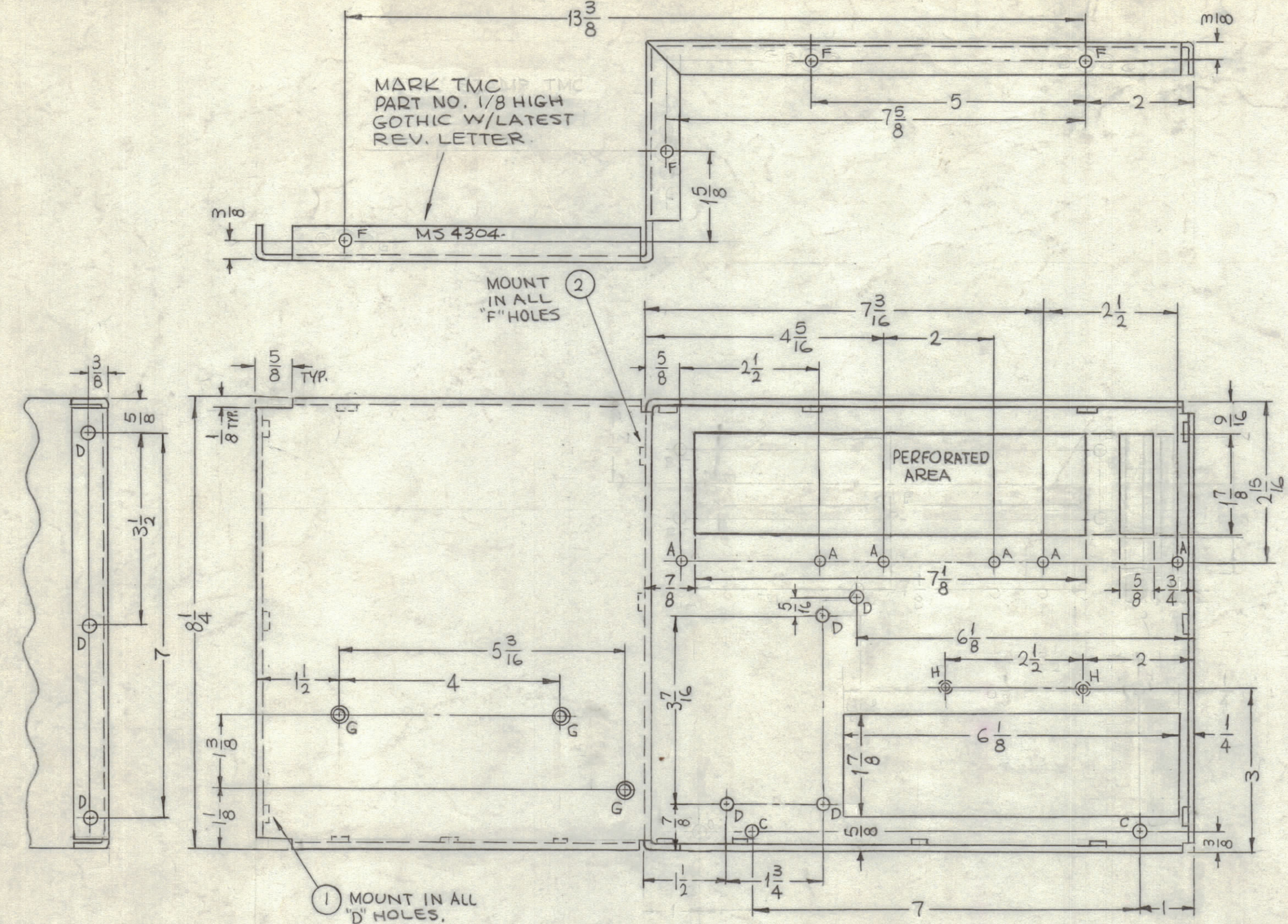


REVISIONS						
ZONE	SYM	DESCRIPTION	DATE	E.M.N. NO.	DRAFT	CHKD
	X	EXPERIMENTAL RELEASE	12-9-64	X	SRG	
	X1	2 F HOLES ADDED ON LIP. G HOLE DELETED	11-24-64	X1	SRG	
	X2	1 G HOLE DELETED, 1 7/8 x 1/8 CUTOUT ADDED, 5 F HOLES ADDED DIM 7 WAS 8 FOR C HOLES, DIM REVISED	1-5-65	X2	SRG	
	X3	2 H HOLES ADDED	1-15-65	X3	SRG	
	X4	1 D HOLE ADDED, H HOLE RE-LOCATED, 3/4 WAS 1/2 (SLOT)	1-10-65	X4	SRG	
	X5	J HOLES WERE B HOLES, TOP F HOLES WERE FASTENERS	1-24-65	X5	SRG	
	X6	3 G HOLES ADDED, 3/8 MTG DIM WAS 11/32	1-29-65	X6	SRG	
	Ø	ORIGINAL RELEASE FOR PRODUCTION	6-23-66	#	WVJ	file



HOLES	DESCRIPTION	REQ.
A	5/32 DIA.	6
B	11/64 DIA.	1
C	13/64 DIA.	2
D	.221-.224 DIA.	10
E	DR. 1.69 DIA. C'SINK 82° X .337 DIA.	2
F	191-194 DIA.	13
G	DR. 14.4 DIA. C'SINK 82° X 2.84 DIA.	6
H	DR. 120 DIA. C'SINK 82° X 2.30 DIA.	2

UNLESS OTHERWISE SPECIFIED:

1. USE MATERIAL THICKNESS FOR MAXIMUM RADIUS ON ALL BENDS
2. ALL ANGULAR BENDS 90 DEGREES
3. REMOVE ALL BURRS AND SHARP EDGES
4. MOUNT INSERTS AFTER FINISHING

QTY/UNIT	MODEL USED ON	ASS'Y. NO.
1	RFTA-1	
SCALE	CODE	
1/2:1	A	

REQ'D.	ITEM	PART NUMBER	DESCRIPTION	SYMBOL
13	2	NT129-632-4	NUT, PLAIN, SPLINE	F
10	1	NT129-832-4	NUT, PLAIN, SPLINE	D

F. BUDETTI LIST OF MATERIAL

MATERIAL	THE TECHNICAL MATERIEL CORP.
.081 THICK ALUMINUM 5052-H32	MAMARONECK, NEW YORK
FINISH	TITLE
S404 YELLOW IRIDITE	PLATE, LEFT SIDE

DRAWN	DATE	FINAL APPROVAL	DATE
SRG	12-9-64	[Signature]	12/9/64
CHECKED	DATE		
[Signature]			
ELECT. DES.	DATE		
[Signature]			
MECH. DES.	DATE		
[Signature]			

MS4304

MS4304