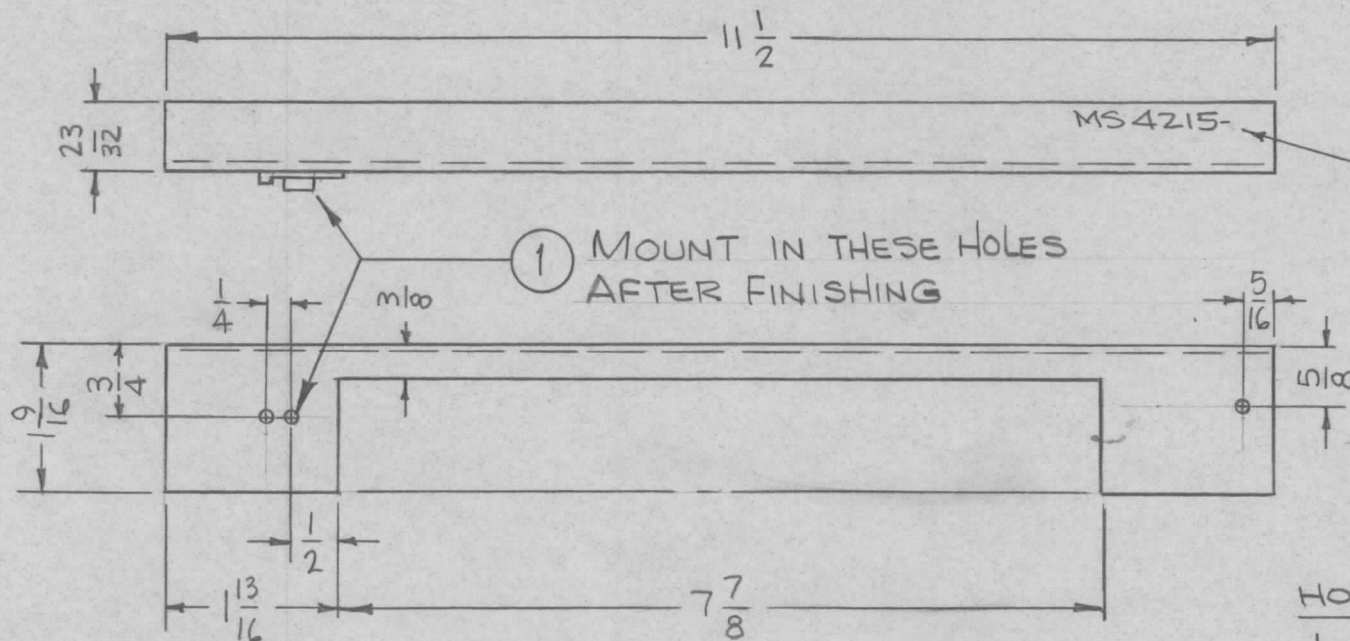


REQ. PER UNIT	USED ON			MS4215	A
	MODEL	ASS'Y. NO.	DATE		
1	GPT-10KLF		11-3-65		



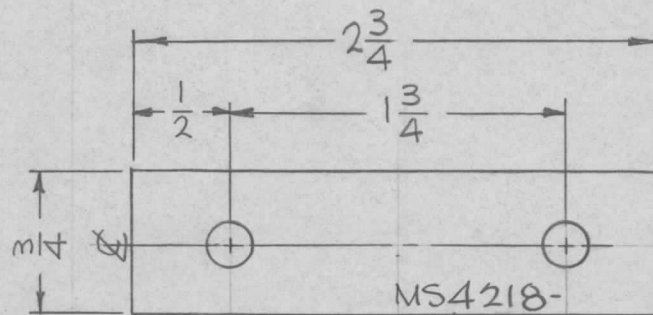
METAL STAMP TMC
P/N $\frac{1}{8}$ HIGH GOTHIC
W/LATEST REV.
LETTER.

HOLES:
 $\frac{1}{8}$ DIA. (3 REQ.)

- UNLESS OTHERWISE SPECIFIED:
1. USE MATERIAL THICKNESS FOR MAXIMUM RADIUS ON ALL BENDS
 2. ALL ANGULAR BENDS 90 DEGREES
 3. REMOVE ALL BURRS AND SHARP EDGES

							1	1	FS117-4	FASTENER, SNAPSLIDE, SET			
							REQ. ITEM	PART NO.		F. BUDETTI	DESCRIPTION	SYMBOL	
							.081 THICK			THE TECHNICAL MATERIEL CORP.			
							STOCK SIZE			MAMARONECK. NEW YORK			
							ALUMINUM			COVER, CHASSIS, MTG. FAN			
							MATERIAL						
							5052-H32						
							TYPE & TEMPER	HEAT TREAT. SPEC.	DRAWN	CHECKED	FINAL APPROVAL		
							S404 YEL. IRIDITE				MS4215 A		
							FINISH & SPEC. NO.		ELEC. DES. APP.	MECH. DES. APP.			
UNLESS OTHERWISE SPECIFIED DIMENSIONS ARE IN INCHES AND INCLUDE CHEMICALLY APPLIED OR PLATED FINISHES							SCALE 1/2:1						
DECIMALS .X ± .05 .XX ± .01 .XXX ± .005		FRACTIONS ± 1/64 ANGLES ± 0° 30'		TOLERANCES		CODE A							
A		ADDED ITEM 1		5.3.66	16207	HLA	QCB	file					
Ø		ORIGINAL RELEASE		12/21/65	Ø								

REQ. PER UNIT	USED ON			MS4218	Ø
	MODEL	ASS'Y. NO.	DATE		
2	GPT-10KLF	AP125	3-1-66		

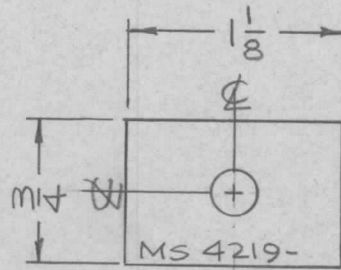


HOLES:
15/64 DIA. (2REQ.)

MARK TMC PART NO.
1/8 HIGH GOTHIC
W/LATEST REV. LETTER

REQ.	ITEM	PART NO.	F. BUDETTI DESCRIPTION			SYMBOL
			1/8 THICK			THE TECHNICAL MATERIEL CORP. MAMARONECK, NEW YORK
			STOCK SIZE			
			ALUMINUM			PLATE, RESISTOR MTG (LARGE)
			MATERIAL			
Ø	ORIGINAL RELEASE FOR PRODUCTION	3-1-66	M	SRG	Alc	
SYM	DESCRIPTION	DATE	CH. NO.	DRAFTS	CHECKER	ENG. APP.
UNLESS OTHERWISE SPECIFIED DIMENSIONS ARE IN INCHES AND INCLUDE CHEMICALLY APPLIED OR PLATED FINISHES		SCALE				
		1:1				
DECIMALS	TOLERANCES	FRACTIONS	CODE			
.X ± .05		± 1/64	A			
.XX ± .01		ANGLES				
.XXX ± .005		± 0° 30'				
				5052-H32		
				TYPE & TEMPER	HEAT TREAT. SPEC.	DRAWN
				S404 YEL. IRIDITE		W
				FINISH & SPEC. NO.	ELEC. DES. APP.	MECH. DES. APP.
						MS4218
						Ø

REQ. PER UNIT	USED ON			MS 4219	Ø
	MODEL	ASS'Y. NO.	DATE		
2	GPT-10KLF	AP125	3-1-66		

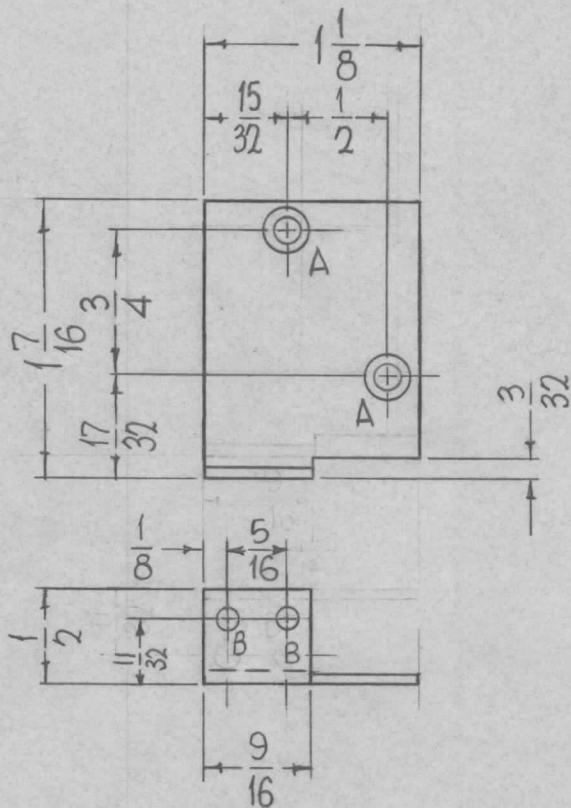


HOLE:
15/64 DIA. (1REQ.)

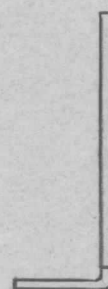
MARK TMC PART NO.
P/N 1/8 HIGH GOTHIC
W/LATEST REV. LETTER.

							REQ. ITEM	PART NO.	F. BUDETTI DESCRIPTION	SYMBOL
								1/8 THICK	THE TECHNICAL MATERIEL CORP. MAMARONECK, NEW YORK	
								STOCK SIZE		
Ø	ORIGINAL RELEASE FOR PRODUCTION	3-1-66	M	Jc				ALUMINUM	PLATE, RESISTOR MTG.	
SYM	DESCRIPTION	DATE	CH. NO.	DRAFTS	CHECKER	ENG. APP.		MATERIAL	(SMALL)	
UNLESS OTHERWISE SPECIFIED DIMENSIONS ARE IN INCHES AND INCLUDE CHEMICALLY APPLIED OR PLATED FINISHES		SCALE						5052-H32		
DECIMALS .X ± .05 .XX ± .01 .XXX ± .005		FRACTIONS ± 1/64 ANGLES ± 0° 30'		CODE						
TOLERANCES		A								
								S404 YEL. IRIDITE		
								FINISH & SPEC. NO.	ELEC. DES. APP.	MECH. DES. APP.
										MS 4219 Ø

REQ. PER UNIT	USED ON			MS4220	A
	MODEL	ASS'Y. NO.	DATE		
1	VLLA-1		1-3-65		



METAL STAMP TMC NO.
MS4220, 1/8 HIGH
GOTHIC ON THIS
SURFACE



HOLES REQ.

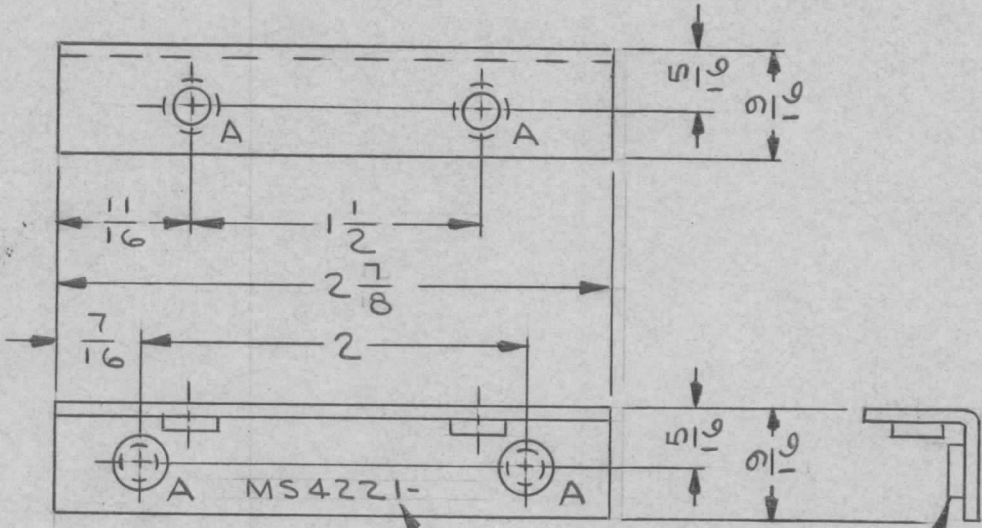
A - DRILL .120 DIA. 2
THRU, C'SK 82°
X.230 DIA.

B - 9/64 DIA. 2

REF-TMC DWG. LD1711

REQ. ITEM	PART NO.	BUDETTI	DESCRIPTION	SYMBOL					
	.064 THICK		THE TECHNICAL MATERIEL CORP.						
	STOCK SIZE		MAMARONECK, NEW YORK						
A	BOTTOM VIEW REDRAWN	2-2-66	15677						
Ø	ORIGINAL RELEASE	11-29-65	Ø						
SYM	DESCRIPTION	DATE	CH. NO.	DRAFTS	CHECKER	ENG. APP.	MATERIAL		
UNLESS OTHERWISE SPECIFIED DIMENSIONS ARE IN INCHES AND INCLUDE CHEMICALLY APPLIED OR PLATED FINISHES		SCALE		5052-H32		John C. Biele	QC		
DECIMALS .X ± .05 .XX ± .01 .XXX ± .005		FRACTIONS ± 1/64 ANGLES ± 0° 30'		TYPE & TEMPER		HEAT TREAT. SPEC.	DRAWN	CHECKED	FINAL APPROVAL
TOLERANCES		CODE		S404-IRIDITE, 14-2 ALCOAT					
				FINISH & SPEC. NO.		ELEC. DES. APP.	MECH. DES. APP.	MS4220	A

REQ. PER UNIT	USED ON			MS 4221 \emptyset
	MODEL	ASS'Y. NO.	DATE	
4	GPT-10KLF		2/8/65	



HOLE	DESCRIPTION	REQ'D
A	.221-.224 DIA	4

METAL STAMP 1/8 HIGH GOTHIC
TMC PT. NO. W/LATEST REV. LETTER

1 MOUNT IN ALL
"A" HOLES

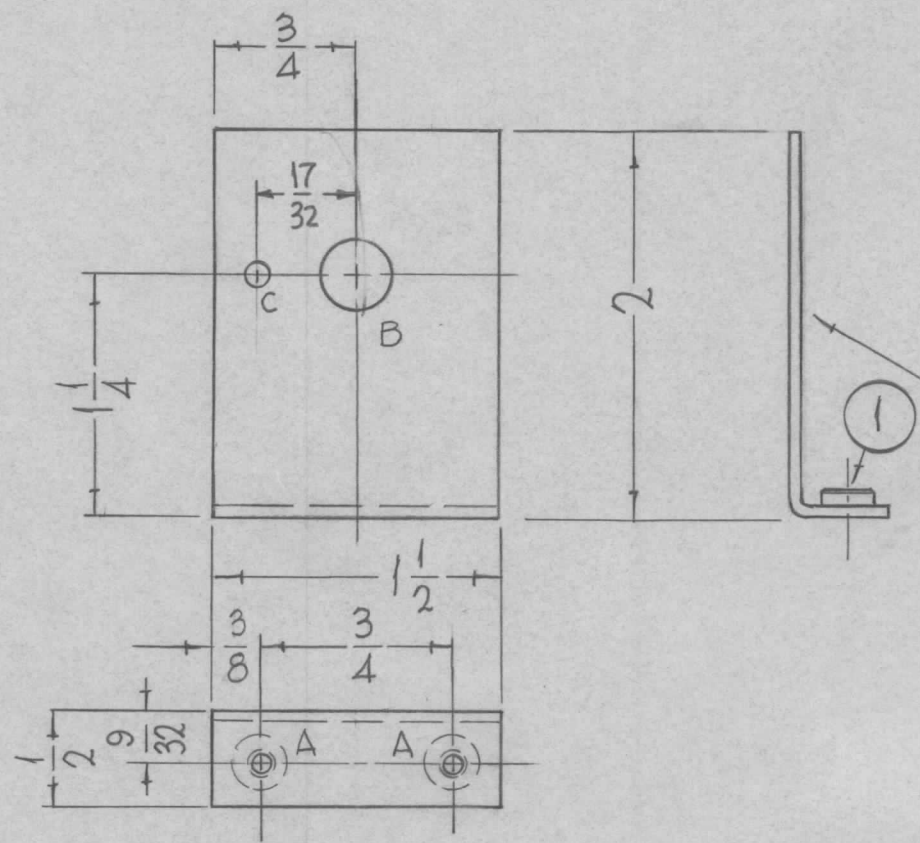
UNLESS OTHERWISE SPECIFIED:

1. USE MATERIAL THICKNESS FOR MAXIMUM RADIUS ON ALL BENDS
2. ALL ANGULAR BENDS 90 DEGREES
3. REMOVE ALL BURRS AND SHARP EDGES
4. MOUNT INSERTS AFTER FINISHING

4	1	NT-129-832-4	NUT, ROUND, SWAGE TYPE		
REQ. ITEM	PART NO.		DESCRIPTION		SYMBOL
	.064 THK		THE TECHNICAL MATERIEL CORP.		
	STOCK SIZE		MAMARONECK. NEW YORK		
	ALUMINUM		BRACKET, SUPPORT		
	MATERIAL		(ZENER BOARD)		
	5052-H32		LESHINSKI	JCB	MS 4221 \emptyset
	TYPE & TEMPER	HEAT TREAT. SPEC.	DRAWN	CHECKED	FINAL APPROVAL
	YELLOW IRIDITE PER S404				
	FINISH & SPEC. NO.		ELEC. DES. APP.	MECH. DES. APP.	

\emptyset	ORIGINAL RELEASE	12/21/65	\emptyset				
X	EXP. RELEASE	2/8/65		JL			
SYM	DESCRIPTION	DATE	CH. NO.	DRAFTS	CHECKER	ENG. APP.	
UNLESS OTHERWISE SPECIFIED DIMENSIONS ARE IN INCHES AND INCLUDE CHEMICALLY APPLIED OR PLATED FINISHES		SCALE					
		1:1					
DECIMALS	TOLERANCES	FRACTIONS	CODE				
.X \pm .05		\pm 1/64					
.XX \pm .01		ANGLES					
.XXX \pm .005		\pm 0° 30'					

REQ. PER UNIT	USED ON			MS4222	Ø
	MODEL	ASS'Y. NO.	DATE		
2	VLLA-1		1-3-65		



HOLES	REQ
A - .191 - .194 DIA.	2
B - 3/8 DIA.	1
C - 1/8 DIA.	1

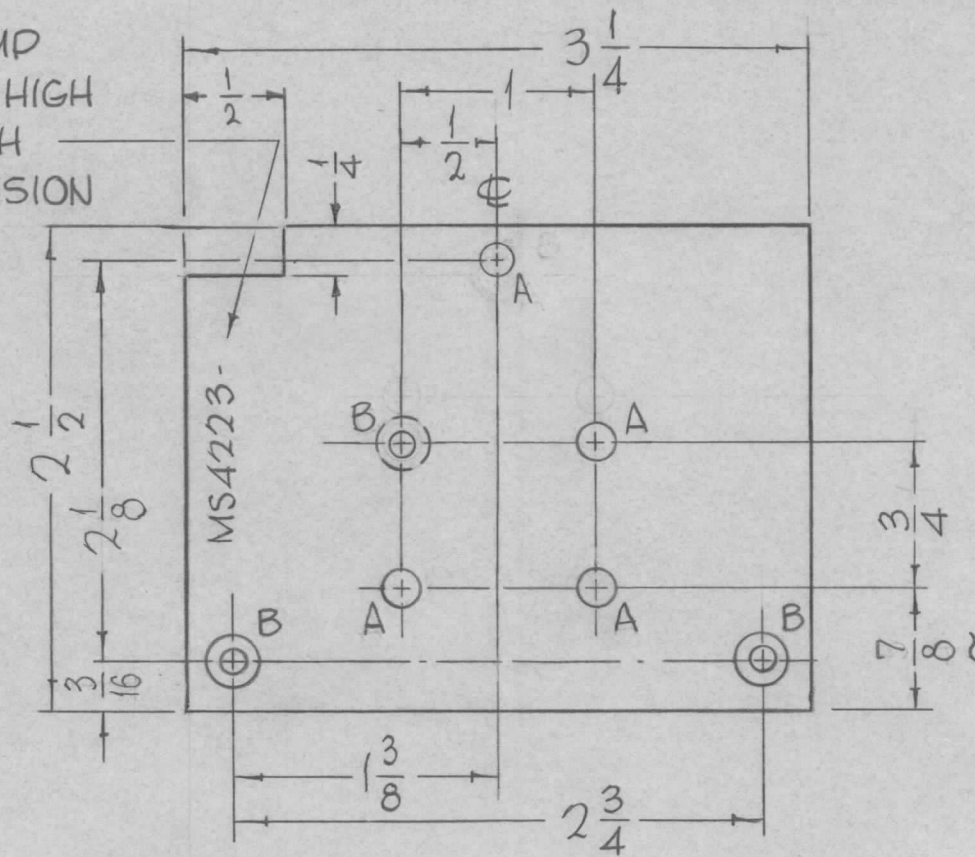
REF. TMC DWG'S. LD1702 (1REQ)
LD1703 (1REQ)

2	1	NT129632-4	NUT, ROUND, SWAGE TYPE	A
REQ.	ITEM	PART NO.	DESCRIPTION	SYMBOL
			.064 THICK	
			STOCK SIZE	
			ALUMINUM	
			MATERIAL	
			5052-H32	
			TYPE & TEMPER	
			HEAT TREAT. SPEC.	
			DRAWN	
			CHECKED	
			FINISH & SPEC. NO.	
			S404-IRIDITE, 14-2 AL COAT	
			ELEC. DES. APP.	
			MECH. DES. APP.	
			MS4222	Ø

Ø	ORIGINAL RELEASE FOR PRODUCTION	11-16-65	Ø	ZVK		
X2	C HOLE ADDED	11-11-65	X2	ZVK		
X1	3/8 DIM. WAS 1/4 (ON "A" HOLE)	3-17-65	X1	JCB		
SYM	DESCRIPTION	DATE	CH. NO.	DRAFTS	CHECKER	ENG. APP.
UNLESS OTHERWISE SPECIFIED DIMENSIONS ARE IN INCHES AND INCLUDE CHEMICALLY APPLIED OR PLATED FINISHES		SCALE	1:1			
DECIMALS .X ± .05 .XX ± .01 .XXX ± .005	TOLERANCES	FRACTIONS ± 1/64 ANGLES ± 0° 30'	CODE	A		

REQ. PER UNIT	USED ON			MS4223	Ø
	MODEL	ASS'Y. NO.	DATE		
1	VLLA-1		1-3-65		

METAL STAMP
TMC NO. 1/8 HIGH
GOTHIC WITH
LATEST REVISION
LETTER.



HOLES REQ.

A- 13/64 DIA. 4

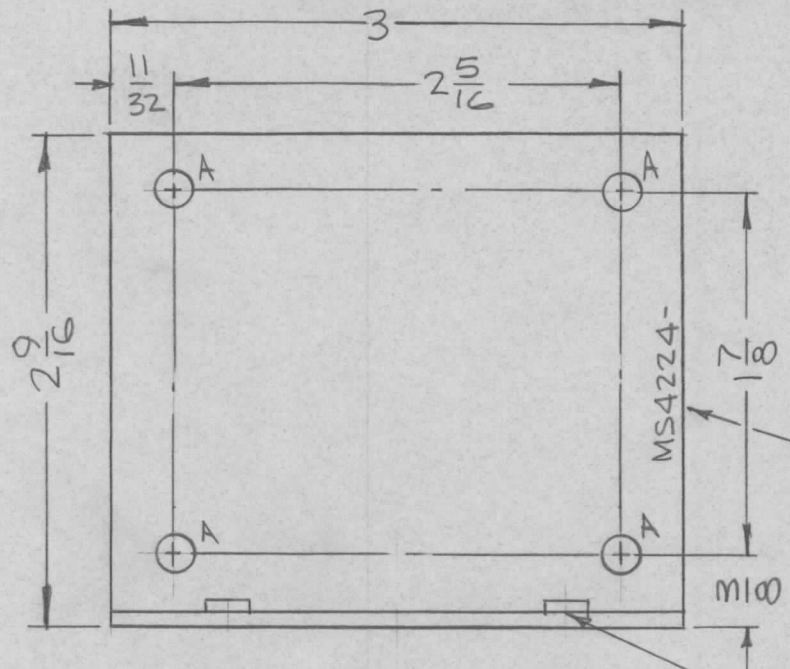
B- DRILL 1.69 DIA.
THRU C'SK 82°
X.337 DIA. 3

REF TMC DWG NO. LD1701

REQ. ITEM	PART NO.	DESCRIPTION	SYMBOL
Ø	ORIGINAL RELEASE FOR PRODUCTION	11-16-65	Ø
X2	CUTOUT ADDED 1/4 X 1/2	11-11-65	X2
X1	7/8 DIM WAS 5/8	3/5/65	X1
SYM	DESCRIPTION	DATE	CH. NO.
UNLESS OTHERWISE SPECIFIED DIMENSIONS ARE IN INCHES AND INCLUDE CHEMICALLY APPLIED OR PLATED FINISHES		SCALE	1:1
DECIMALS .X ± .05 .XX ± .01 .XXX ± .005	FRACTIONS ± 1/64 ANGLES ± 0° 30'	CODE	A
5052-H32		5404 IRIDITE, 14-2 ALCOAT	
TYPE & TEMPER		HEAT TREAT. SPEC.	
DRAWN		CHECKED	FINAL APPROVAL
FINISH & SPEC. NO.		ELEC. DES. APP.	MECH. DES. APP.
		MS4223	Ø

M/ 2 9

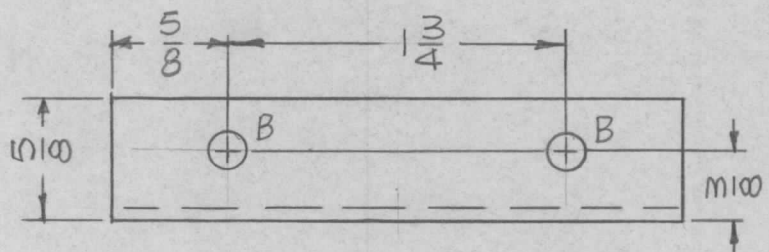
REQ. PER UNIT	USED ON			MS4224 Ø
	MODEL	ASS'Y. NO.	DATE	
1	GPT-10KLF	AX569	3-1-66	



HOLES:
 A ~ 13/64 DIA. (4 REQ.)
 B ~ .221-.224 DIA. (2 REQ.)

MARK TMC PART NO. 1/8 HIGH GOTHIC W/LATEST REV LETTER.

① MOUNT IN "B" HOLES.

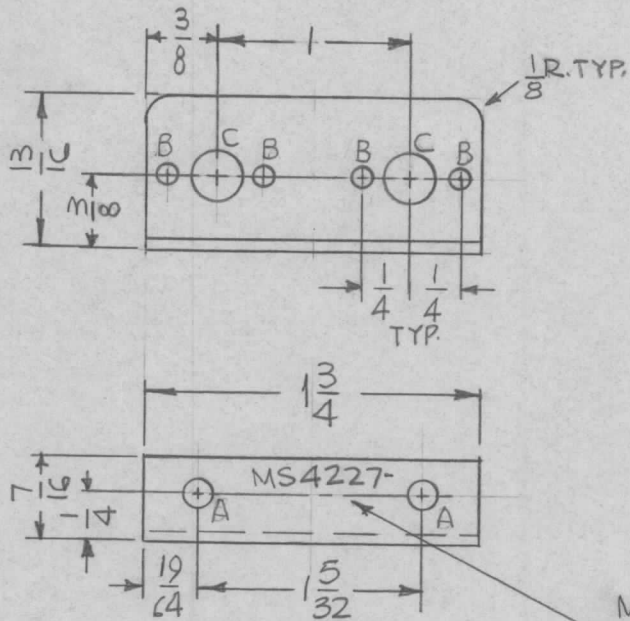


UNLESS OTHERWISE SPECIFIED:

1. USE MATERIAL THICKNESS FOR MAXIMUM RADIUS ON ALL BENDS
2. ALL ANGULAR BENDS 90 DEGREES
3. REMOVE ALL BURRS AND SHARP EDGES

						2	1	NT 129-832-4	NUT, PLAIN, SPLINE	B		
						REQ. ITEM		PART NO.	F. BUDETTI DESCRIPTION	SYMBOL		
								.081 THICK	THE TECHNICAL MATERIEL CORP. MAMARONECK, NEW YORK			
								STOCK SIZE	BRACKET, TRANSFORMER MTG			
Ø	ORIGINAL RELEASE FOR PRODUCTION	3-1-66	M	Jc	PCB			ALUMINUM	SWR COUPLER			
SYM	DESCRIPTION	DATE	CH. NO.	DRAFTS	CHECKER	ENG. APP.		MATERIAL				
UNLESS OTHERWISE SPECIFIED DIMENSIONS ARE IN INCHES AND INCLUDE CHEMICALLY APPLIED OR PLATED FINISHES		SCALE	1:1						5052-H32	<i>[Signature]</i>	<i>[Signature]</i>	
DECIMALS .X ± .05 .XX ± .01 .XXX ± .005		TOLERANCES	FRACTIONS ± 1/64 ANGLES ± 0° 30'	CODE A				TYPE & TEMPER	HEAT TREAT. SPEC.	DRAWN	CHECKED	FINAL APPROVAL
								S404 YEL. IRIDITE		<i>[Signature]</i>	<i>[Signature]</i>	MS4224 Ø
								FINISH & SPEC. NO.	ELEC. DES. APP.	MECH. DES. APP.		

REQ. PER UNIT	USED ON			MS4227	∅
	MODEL	ASS'Y. NO.	DATE		
1	GPT-10KLF	AX569	2-28-66		



- HOLES:
- A ~ 9/64 DIA. (2 REQ.)
 - B ~ 3/32 DIA (4 REQ.)
 - C ~ 1/4 DIA. (2 REQ.)

UNLESS OTHERWISE SPECIFIED:

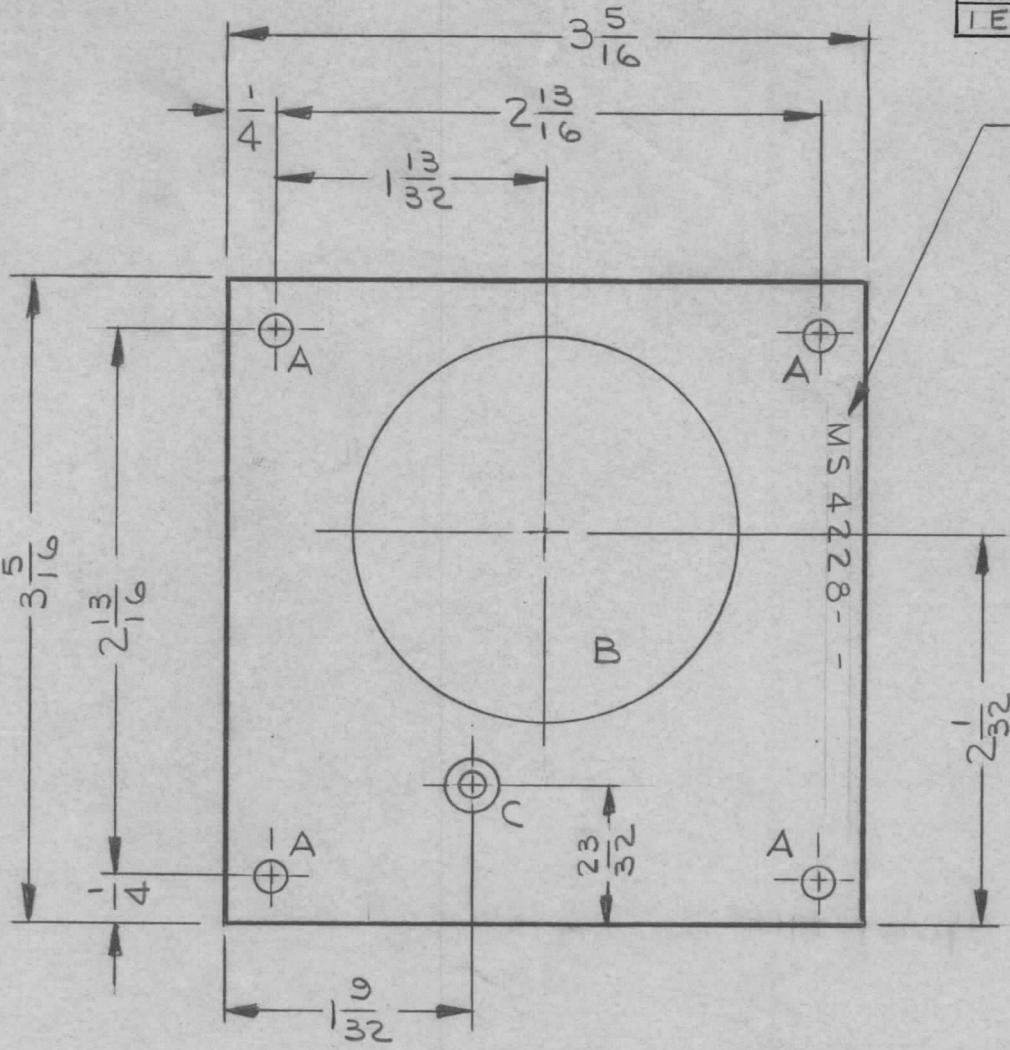
1. USE MATERIAL THICKNESS FOR MAXIMUM RADIUS ON ALL BENDS
2. ALL ANGULAR BENDS 90 DEGREES
3. REMOVE ALL BURRS AND SHARP EDGES

MARK TMC PART NO.
1/8 HIGH GOTHIC W/LATEST
REV. LETTER.

REF: LD 1706

REQ.	ITEM	PART NO.	F. BUDETTI DESCRIPTION			SYMBOL	
∅			ORIGINAL RELEASE FOR PRODUCTION				
			3-1-66	Jc	JCB		
X1			3-1-66	SR6			
SYM	DESCRIPTION		DATE	CH. NO.	DRAFTS	CHECKER	
	UNLESS OTHERWISE SPECIFIED DIMENSIONS ARE IN INCHES AND INCLUDE CHEMICALLY APPLIED OR PLATED FINISHES		SCALE				
	DECIMALS .X ± .05 .XX ± .01 .XXX ± .005		FRACTIONS ± 1/64 ANGLES ± 0° 30'	CODE			
	TOLERANCES		1:1	A			
					5052-H32		
					ALUMINUM	BRACKET, POTENTIOMETER	
					MATERIAL	MOUNTING SWR COUPLER	
					TYPE & TEMPER	HEAT TREAT. SPEC.	
					5404 YEL. IRIDITE		
					FINISH & SPEC. NO.	ELEC. DES. APP.	
						MECH. DES. APP.	
						MS4227 ∅	

REQ. PER UNIT	USED ON		MS4228	Ø
	MODEL	ASS'Y. NO.		
1 EA.	GPT-10KLF		2-26-65	



MARK TMC PART NO. 1/8
HIGH GOTHIC W/LATEST REV. LETTER

HOLE LEGEND		
HOLE	DESCRIPTION	REQ'D
A	3/16 DIA	4
B	2" DIA	1
C	.144 DIA & C'SINK 82° X .284 DIA (ON -1 ONLY, REMOVE FOR -2)	1

MS4228 - AS SHOWN (REF. LD1704)
MS4228-2 - AS SHOWN EXCEPT FOR LEFT
WIRE REMOVAL OF "C" HOLE.
(REF. LD2056)

REF.: LD1704, LD2056

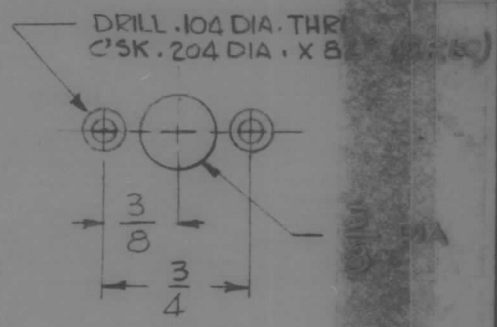
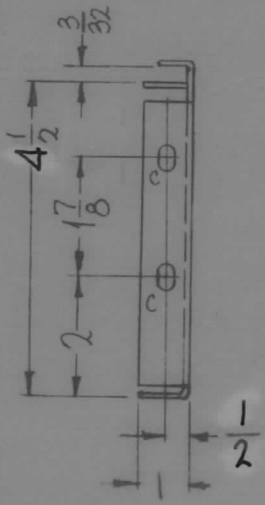
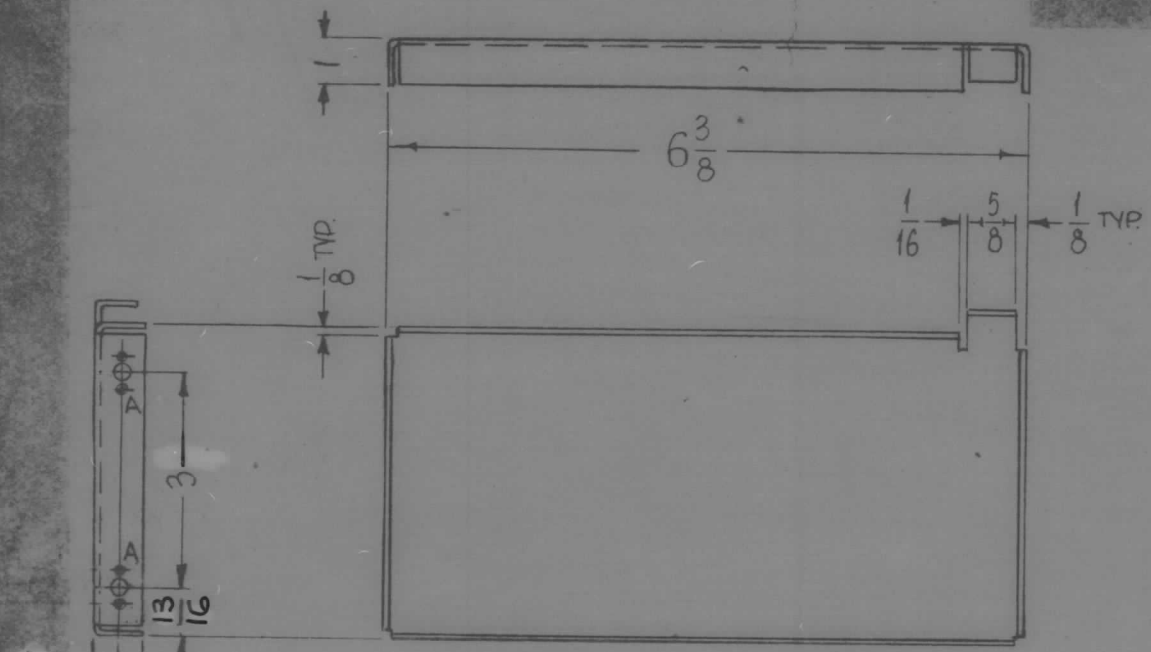
SYM	DESCRIPTION	DATE	CH. NO.	DRAFTS	CHECKER	ENG. APP.	REQ. ITEM	PART NO.	BUDETTI	DESCRIPTION	SYMBOL
Ø	ORIGINAL RELEASE FOR PRODUCTION	2-18-66	-AA	Jc			.064 THK			THE TECHNICAL MATERIEL CORP. MAMARONECK, NEW YORK	PLATE, PICK UP LOOP, SWR COUPLER
XI	MS4228-1 & MS4228-2 WAS PT. 1 & PT. 2.	6-24-65	-AA	Jc			STOCK SIZE				
X	EXP. RELEASE	2/26/65		JL			ALUMINUM				
UNLESS OTHERWISE SPECIFIED DIMENSIONS ARE IN INCHES AND INCLUDE CHEMICALLY APPLIED OR PLATED FINISHES							MATERIAL				
SCALE							5052-H32		J. LESHINSKI		
TOLERANCES							TYPE & TEMPER		DRAWN		
FRACTIONS							HEAT TREAT. SPEC.		CHECKED		
DECIMALS							YELLOW IRIDITE		FINAL APPROVAL		
.X ± .05							PER S404		MS4228		
.XX ± .01							FINISH & SPEC. NO.		ELEC. DES. APP.		
.XXX ± .005									MECH. DES. APP.		

UNIT	USED ON		
	MODEL	ASSY. NO.	DATE
1	GPT-10KLF	AX 501	3-3-66

MS4237 \emptyset

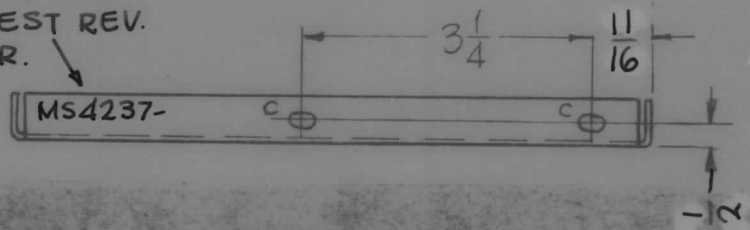
HOLES

A - SEE DETAIL 2
 C - 15/64 X 13/32 SLOT 4



DETAIL "A"
(2 REQ.)

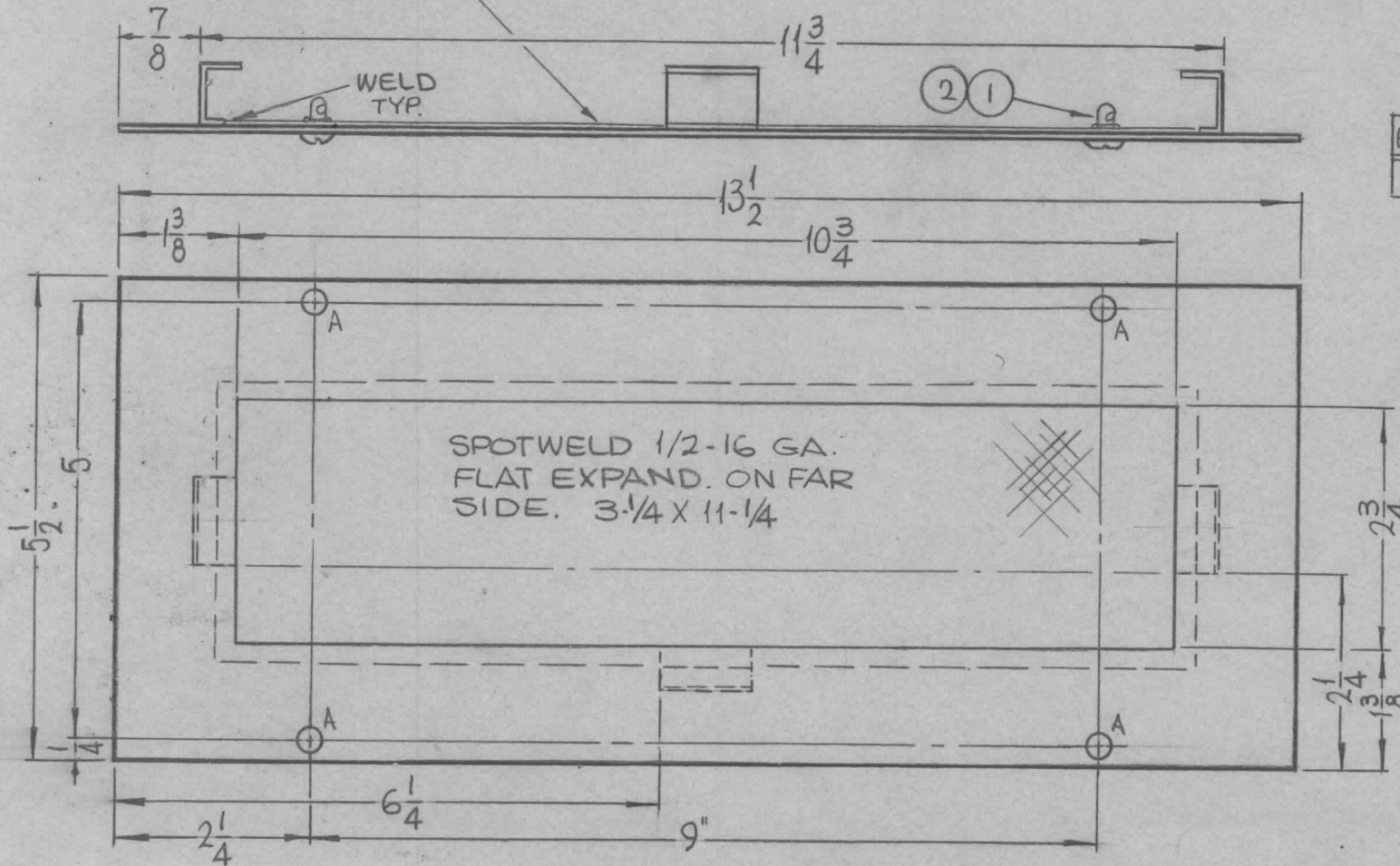
MARK TMC P/N
 $\frac{1}{8}$ " HIGH GOTHIC
 W/LATEST REV.
 LETTER.



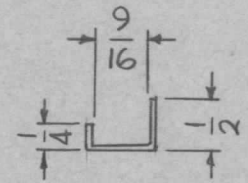
REQ. ITEM	PART NO.	F. BUDETTI	DESCRIPTION	SYMBOL
	.064 THK STOCK SIZE		THE TECHNICAL MATERIEL CORP. MAMARONECK, NEW YORK	
	ALUMINUM		JUNCTION BOX, LEFT SIDE	
	5052 -H32			
	5404 YEL. IRIDITE			
	FINISH & SPEC. NO.			
ORIGINAL RELEASE FOR PRODUCTION	3-7-66	Jc	JCB	
UNLESS OTHERWISE SPECIFIED DIMENSIONS ARE IN INCHES AND INCLUDE CHEMICALLY APPLIED OR PLATED FINISHES	SCALE DO NOT SCALE			
CINALS ±.05 ±.01 ±.005	FRACTIONS ± 1/64 ANGLES ± 0° 30'	CODE A		
TOLERANCES				
				MS4237 \emptyset

METAL STAMP TMC PART NO. (MS4238-)
 1/8 HIGH GOTHIC W/LATEST REV.
 LETTER.

REQ. PER UNIT	USED ON			MS4238	Ø
	MODEL	ASS'Y. NO.	DATE		
3	TER-25K		12-28-64		



HOLES	DESCRIPTION	REQ.
A	1/4 DIA.	4



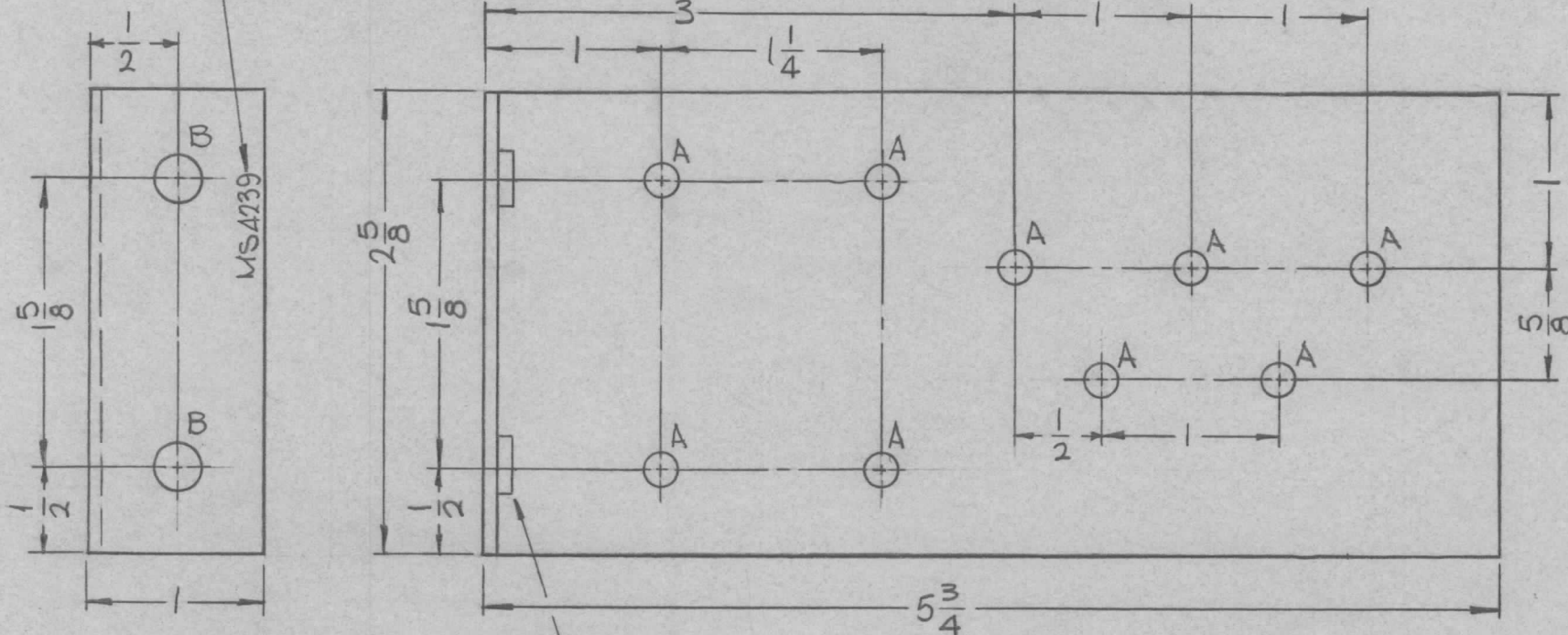
BRACKET
 DETAIL
 (3 REQ.)

4	2	FS 109-3	RING, STUD RETAINING	A
4	1	FS 110-7	STUD, SLOTTED HEAD	A
REQ.	ITEM	PART NO.	F. BUDETTI DESCRIPTION	SYMBOL
		#16 GA.	THE TECHNICAL MATERIEL CORP. MAMARONECK, NEW YORK	RETAINER, AIR FILTER
		STOCK SIZE		
		STEEL		
		MATERIAL		
			SRG	
		TYPE & TEMPER	HEAT TREAT. SPEC.	DRAWN
		5520 BLV. GREY TEX. VINYL		CHECKED
		FINISH & SPEC. NO.	ELEC. DES. APP.	MECH. DES. APP.
				MS4238

Ø	ORIGINAL RELEASE FOR PRODUCTION	12-28-64	X	SRG		
SYM	DESCRIPTION	DATE	CH. NO.	DRAFTS	CHECKER	ENG. APP.
UNLESS OTHERWISE SPECIFIED DIMENSIONS ARE IN INCHES AND INCLUDE CHEMICALLY APPLIED OR PLATED FINISHES		SCALE	1/2:1			
DECIMALS	TOLERANCES	FRACTIONS	CODE			
.X ± .05		± 1/64	A			
.XX ± .01		ANGLES				
.XXX ± .005		± 0° 30'				

METAL STAMP TMC PART NO.
1/8 HIGH GOTHIC W/LATEST
REV. LETTER.

REQ. PER UNIT	USED ON			MS4239 Ø
	MODEL	ASS'Y. NO.	DATE	
1	TER-25K		12-22-64	



UNLESS OTHERWISE SPECIFIED:

1. USE MATERIAL THICKNESS FOR MAXIMUM RADIUS ON ALL BENDS
2. ALL ANGULAR BENDS 90 DEGREES
3. REMOVE ALL BURRS AND SHARP EDGES
4. MOUNT INSERTS AFTER FINISHING

① MOUNT IN ALL "B" HOLES.

HOLES	DESCRIPTION	REQ.
A	11/64 DIA.	9
B	.250-.253 DIA.	2

REF: LD 1717

2	1	NT/29-1032-4	NUT, PLAIN, SPLINE	B
REQ. ITEM		PART NO.	L. BUTLER DESCRIPTION	SYMBOL

.081 THICK

STOCK SIZE

ALUMINUM

MATERIAL

THE TECHNICAL MATERIEL CORP.
MAMARONECK. NEW YORK

BRACKET, MTG. CAPACITOR

5052-H32

TYPE & TEMPER HEAT TREAT. SPEC.

S404 YELLOW IRIDITE

FINISH & SPEC. NO.

SRG

DRAWN

ELEC. DES. APP.

CHECKED

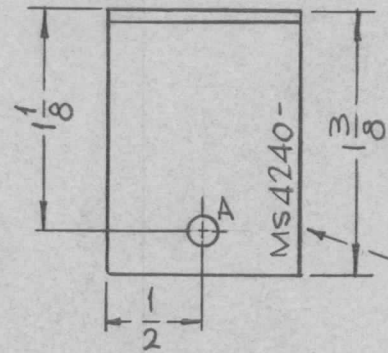
MECH. DES. APP.

FINAL APPROVAL

MS4239 Ø

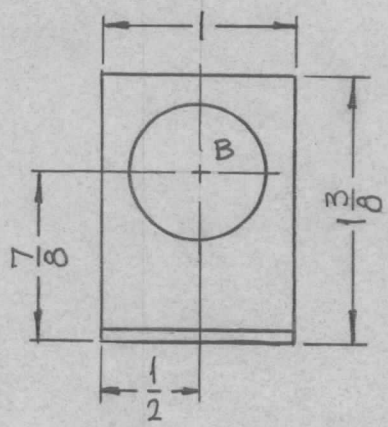
Ø	ORIGINAL RELEASE FOR PRODUCTION	12-22-64	X	SRG			
SYM	DESCRIPTION	DATE	CH. NO.	DRAFTS	CHECKER	ENG. APP.	
UNLESS OTHERWISE SPECIFIED DIMENSIONS ARE IN INCHES AND INCLUDE CHEMICALLY APPLIED OR PLATED FINISHES		SCALE	1:1				
DECIMALS .X ± .05 .XX ± .01 .XXX ± .005	TOLERANCES	FRACTIONS ± 1/64 ANGLES ± 0° 30'	CODE A				

REQ. PER UNIT	USED ON			MS4240 Ø
	MODEL	ASS'Y. NO.	DATE	
5	TER-25K		12-21-64	



METAL STAMP
TMC PART NO.
1/8 HIGH GOTHIC
W/LATEST REV.
LETTER.

HOLES	DESCRIPTION	REQ.
A	9/64 DIA.	1
B	11/16 DIA.	1

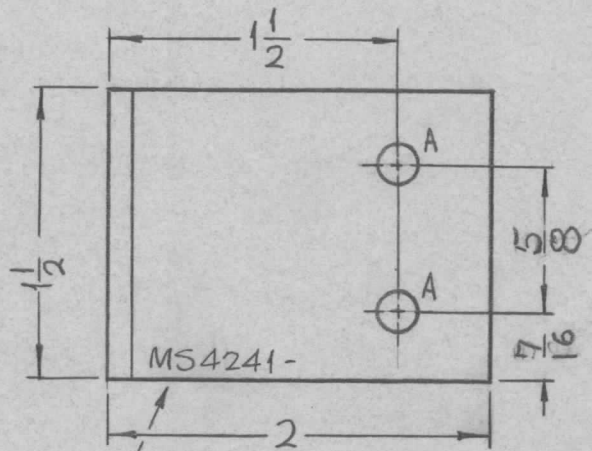
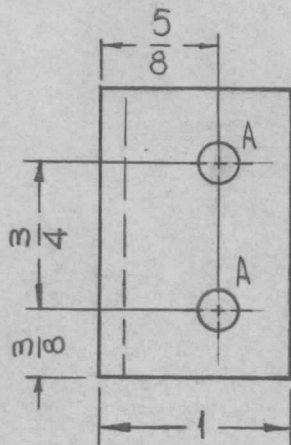


UNLESS OTHERWISE SPECIFIED:

1. USE MATERIAL THICKNESS FOR MAXIMUM RADIUS ON ALL BENDS
2. ALL ANGULAR BENDS 90 DEGREES
3. REMOVE ALL BURRS AND SHARP EDGES

REQ.	ITEM	PART NO.	F. BUDETTI	DESCRIPTION	SYMBOL	
		.064 THICK		THE TECHNICAL MATERIEL CORP. MAMARONECK, NEW YORK		
		STOCK SIZE				
Ø	ORIGINAL RELEASE FOR PRODUCTION	12-21-64	X	SRG	BRACKET, COMPONENT MTG.	
SYM	DESCRIPTION	DATE	CH. NO.	DRAFTS	CHECKER	ENG. APP.
UNLESS OTHERWISE SPECIFIED DIMENSIONS ARE IN INCHES AND INCLUDE CHEMICALLY APPLIED OR PLATED FINISHES		SCALE				
		1:1				
DECIMALS	TOLERANCES	FRACTIONS	CODE			
.X ± .05		± 1/64	A			
.XX ± .01		ANGLES				
.XXX ± .005		± 0° 30'				
			5052-H32	SRG		
			TYPE & TEMPER	HEAT TREAT. SPEC.	DRAWN	CHECKED
			5404 YELLOW IRIDITE			
			FINISH & SPEC. NO.	ELEC. DES. APP.	MECH. DES. APP.	
						MS4240 Ø

REQ. PER UNIT	USED ON			MS4241	Ø
	MODEL	ASS'Y. NO.	DATE		
8	TER 25K		12-29-64		

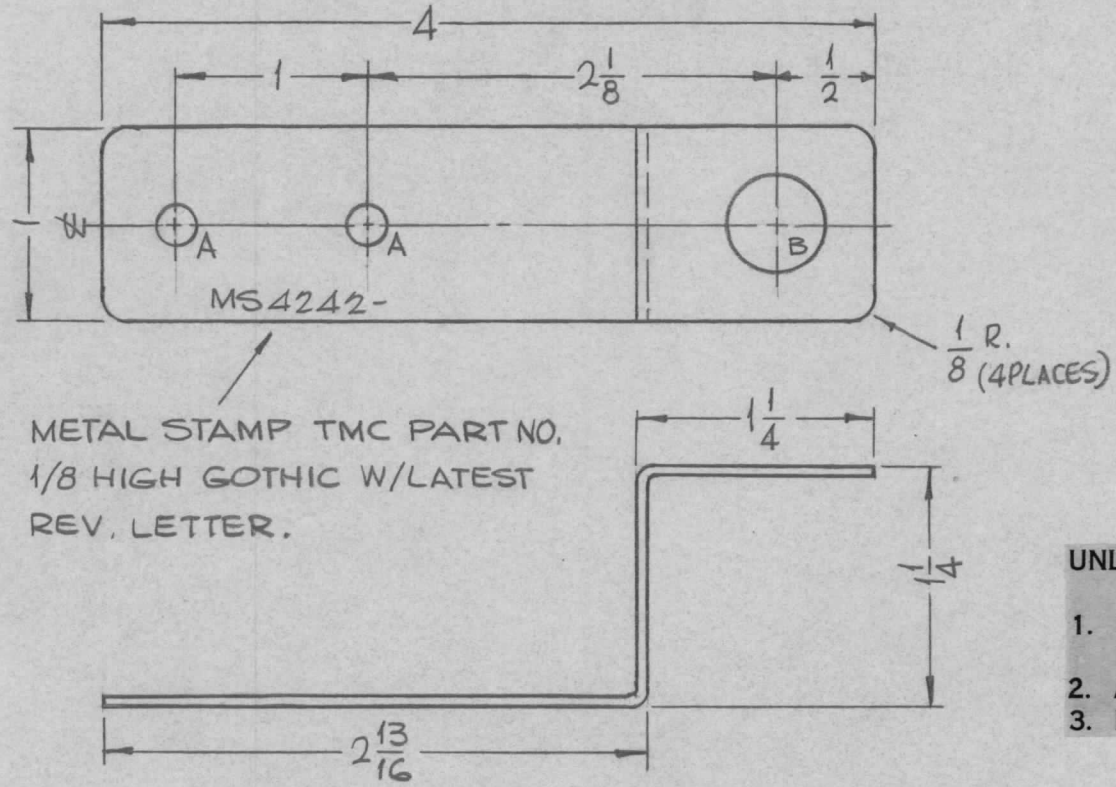


HOLES	DESCRIPTION	REQ.
A	15/64 DIA.	4

METAL STAMP TMC PART NO. 1/8 HIGH GOTHIC W/LATEST REV. LETTER.

REQ. ITEM	PART NO.	DESCRIPTION				SYMBOL
	1 X 2 X 1/8	THE TECHNICAL MATERIEL CORP. MAMARONECK, NEW YORK				
	STOCK SIZE	BRACKET, MTG, SUPPORT				
Ø ORIGINAL RELEASE FOR PRODUCTION	12-29-64	X	SRG			
SYM	DESCRIPTION	DATE	CH. NO.	DRAFTS	CHECKER	ENG. APP.
UNLESS OTHERWISE SPECIFIED DIMENSIONS ARE IN INCHES AND INCLUDE CHEMICALLY APPLIED OR PLATED FINISHES		SCALE				
		1:1				
DECIMALS .X ± .05 .XX ± .01 .XXX ± .005	TOLERANCES	FRACTIONS ± 1/64 ANGLES ± 0° 30'	CODE			
			A			
	S404 YELLOW IRIDITE	TYPE & TEMPER	HEAT TREAT. SPEC.	DRAWN	CHECKED	FINAL APPROVAL
				SRG	AS.	SRG
	FINISH & SPEC. NO.	ELEC. DES. APP.	MECH. DES. APP.	MS4241 Ø		

REQ. PER UNIT	USED ON			MS4242 Ø
	MODEL	ASS'Y. NO.	DATE	
2	TER-25K		12-29-64	



HOLES	DESCRIPTION	REQ.
A	13/64 DIA.	2
B	17/32 DIA.	1

METAL STAMP TMC PART NO. 1/8 HIGH GOTHIC W/LATEST REV. LETTER.

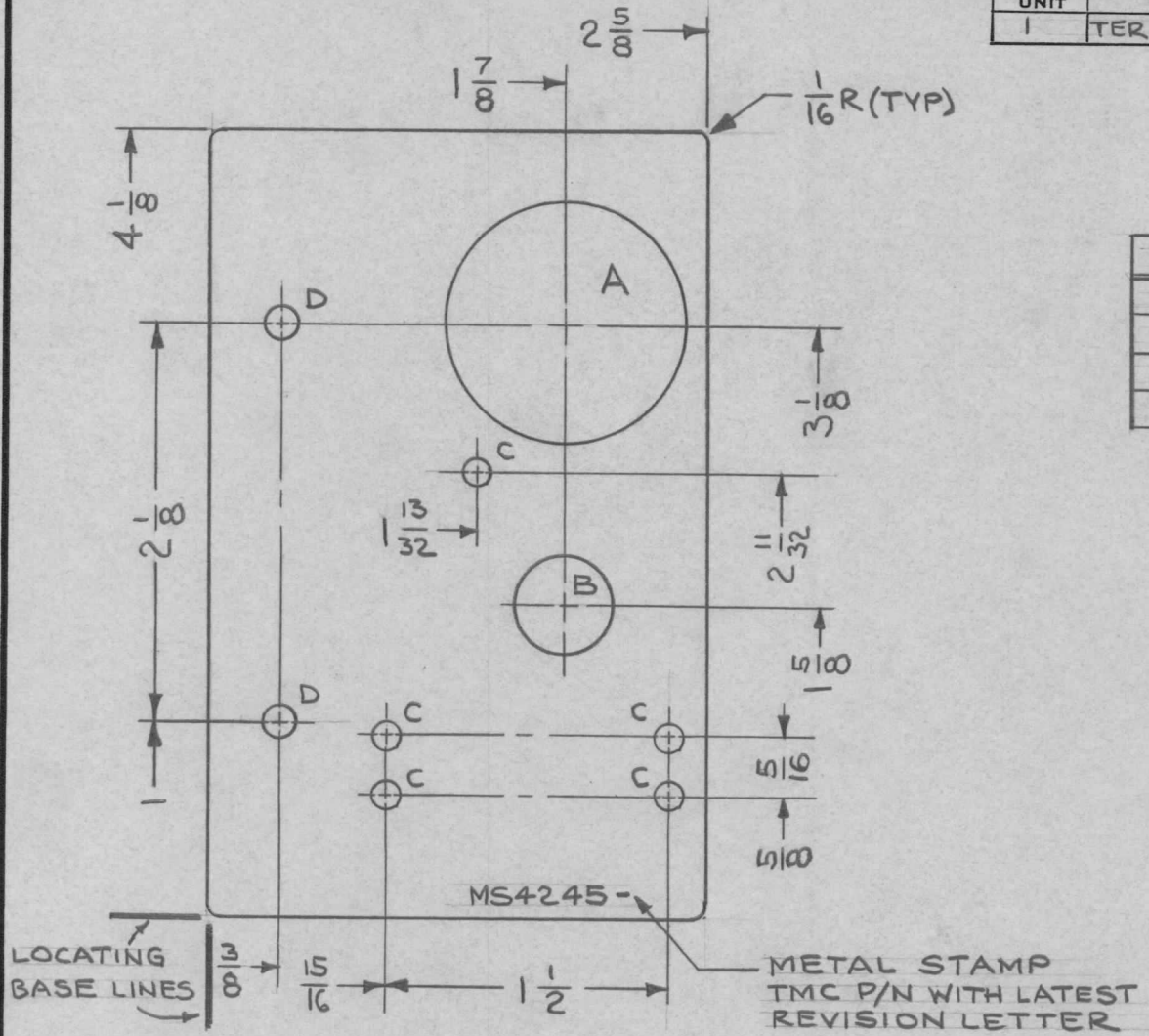
- UNLESS OTHERWISE SPECIFIED:
1. USE MATERIAL THICKNESS FOR MAXIMUM RADIUS ON ALL BENDS
 2. ALL ANGULAR BENDS 90 DEGREES
 3. REMOVE ALL BURRS AND SHARP EDGES

REQ.	ITEM	PART NO.	F. BUDETTI DESCRIPTION			SYMBOL
		1/16 THICK	THE TECHNICAL MATERIEL CORP.			
		STOCK SIZE	MAMARONECK, NEW YORK			
		COPPER	STRAP, CAP.			
		MATERIAL				
		HOT ROLLED	SRG	9013	12/19/65	
		TYPE & TEMPER	DRAWN	CHECKED	FINAL APPROVAL	
		S245 SILVER PLATE		we	MS4242 Ø	
		FINISH & SPEC. NO.	ELEC. DES. APP.	MECH. DES. APP.		

SYM	DESCRIPTION	DATE	CH. NO.	DRAFTS	CHECKER	ENG. APP.
Ø	ORIGINAL RELEASE FOR PRODUCTION	12-29-64	X	SRG		

UNLESS OTHERWISE SPECIFIED DIMENSIONS ARE IN INCHES AND INCLUDE CHEMICALLY APPLIED OR PLATED FINISHES		SCALE	1:1
DECIMALS .X ± .05 .XX ± .01 .XXX ± .005	TOLERANCES	FRACTIONS ± 1/64 ANGLES ± 0° 30'	CODE A

REQ. PER UNIT	USED ON			MS4245 \emptyset
	MODEL	ASS'Y. NO.	DATE	
1	TER-25K-6008		JAN. 5. 1965	

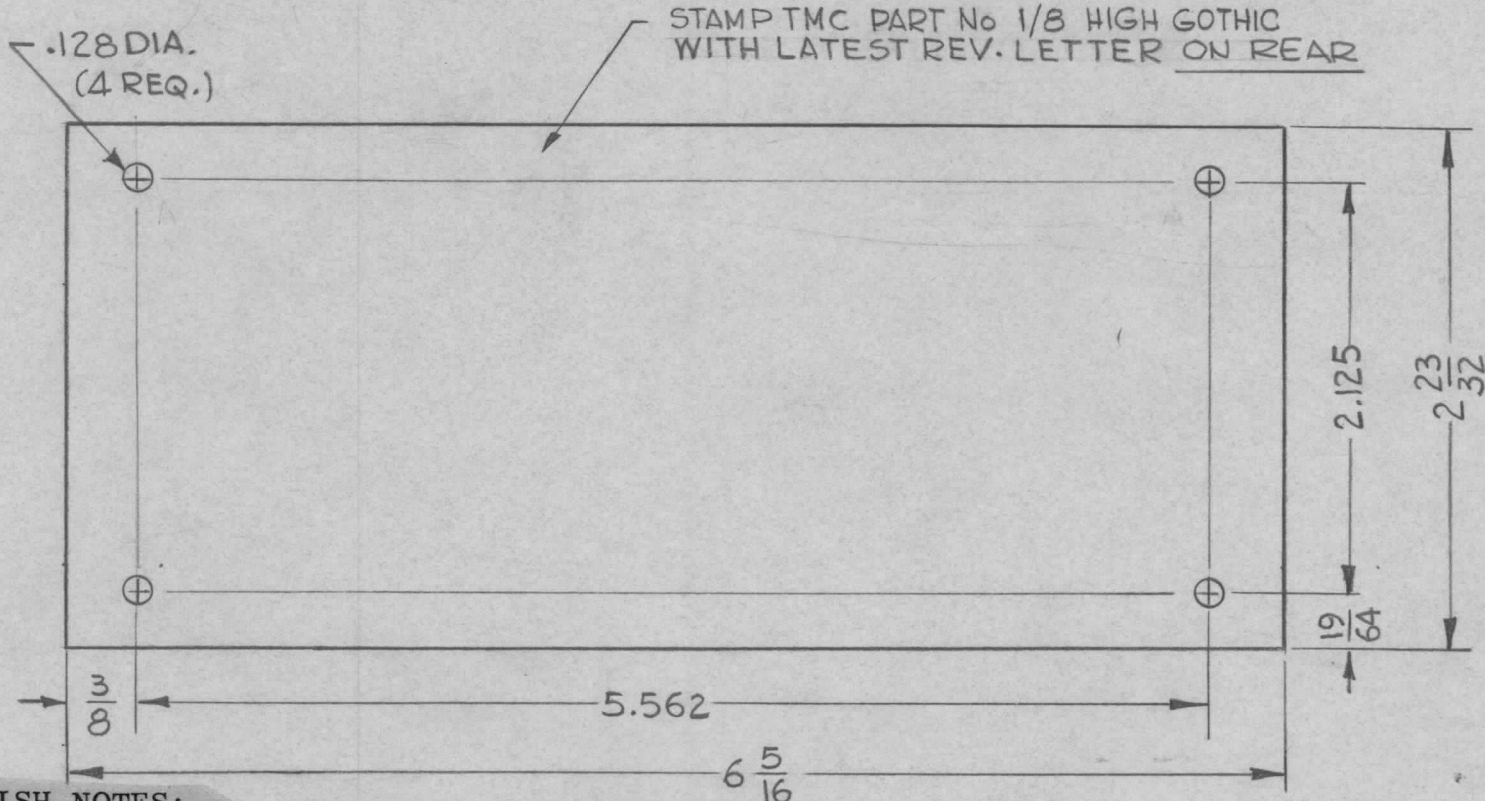


HOLE	DESCRIPTION	REQ
A	1/4 DIA	1
B	1/2 DIA	1
C	9/64 DIA	5
D	11/64 DIA	2

REF.: LD1718

SYM	DESCRIPTION	DATE	CH. NO.	DRAFTS	CHECKER	ENG. APP.	REQ. ITEM	PART NO.	DESCRIPTION	SYMBOL
\emptyset	ORIGINAL RELEASE FOR PRODUCTION	1.8.65	X	LB				.064 THK STOCK SIZE	THE TECHNICAL MATERIEL CORP. MAMARONECK, NEW YORK	\emptyset
								ALUMINUM		
								5052 H32	1.8.65 LB	
								TYPE & TEMPER	CHECKED	
								S404 YELL. IRIDITE		
								FINISH & SPEC. NO.	ELEC. DES. APP.	MECH. DES. APP.
										MS4245 \emptyset

REQ. PER UNIT	USED ON			MS 4246 \emptyset
	MODEL	ASS'Y. NO.	DATE	
1	LFCA-1		1-6-65	



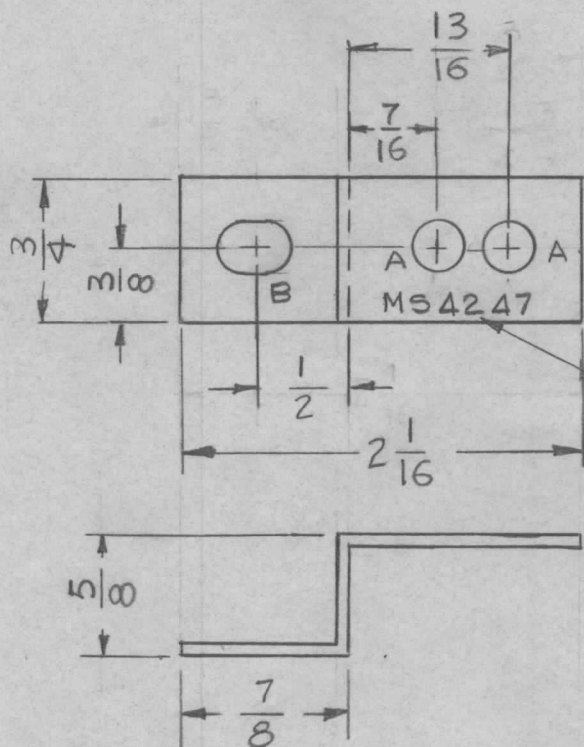
FRONT VIEW SHOWN

FINISH NOTES:

1. S404 - IRIDITE 14-2 AL-COAT.
 2. S114 - ZINC CHROMATE PRIMER } FRONT AND
 3. S115 - SMOOTH GRAY ENAMEL } EDGES ONLY
- OR
- PRIME AND PAINT PER CUSTOMER'S SPECIFICATIONS.

SYM	DESCRIPTION	DATE	CH. NO.	DRAFTS	CHECKER	ENG. APP.	REQ. ITEM	PART NO.	O. POSE	DESCRIPTION	SYMBOL					
\emptyset	ORIGINAL RELEASE FOR PRODUCTION	7-12-66	\emptyset	HKA			.018 THK		THE TECHNICAL MATERIEL CORP. MAMARONECK, NEW YORK							
X1	FINISH NOTES ADDED, METAL STAMP PUT ON REAR	9/14/65	-M	JC			STOCK SIZE									
X	EXPER. RELEASE	1-6-65		G.D.L			ELEC. SILICON STEEL		SHIELD, ELECTRO MAGNETIC							
UNLESS OTHERWISE SPECIFIED DIMENSIONS ARE IN INCHES AND INCLUDE CHEMICALLY APPLIED OR PLATED FINISHES							SCALE									
							1:1									
DECIMALS .X \pm .05 .XX \pm .01 .XXX \pm .005							FRACTIONS \pm 1/64 ANGLES \pm 0° 30'		CODE A							
TOLERANCES							AIFIM19		G.D.L ¹⁻⁶⁻⁶⁵		DRAWN		CHECKED		FINAL APPROVAL	
							SEE NOTES									
							FINISH & SPEC. NO.		ELEC. DES. APP.		MECH. DES. APP.		MS4246 \emptyset			

REQ. PER UNIT	USED ON			MS4247 Ø
	MODEL	ASS'Y. NO.	DATE	
1	PFCB-1		1-6-64	



HOLE	DESCRIPTION	REQ.
A	1/4 DIA	2
B	1/4 x 3/8 SLOT	1

METAL STAMP TMC P/N_{o.}
1/8 HIGH GOTHIC WITH
LATEST REV. LETTER

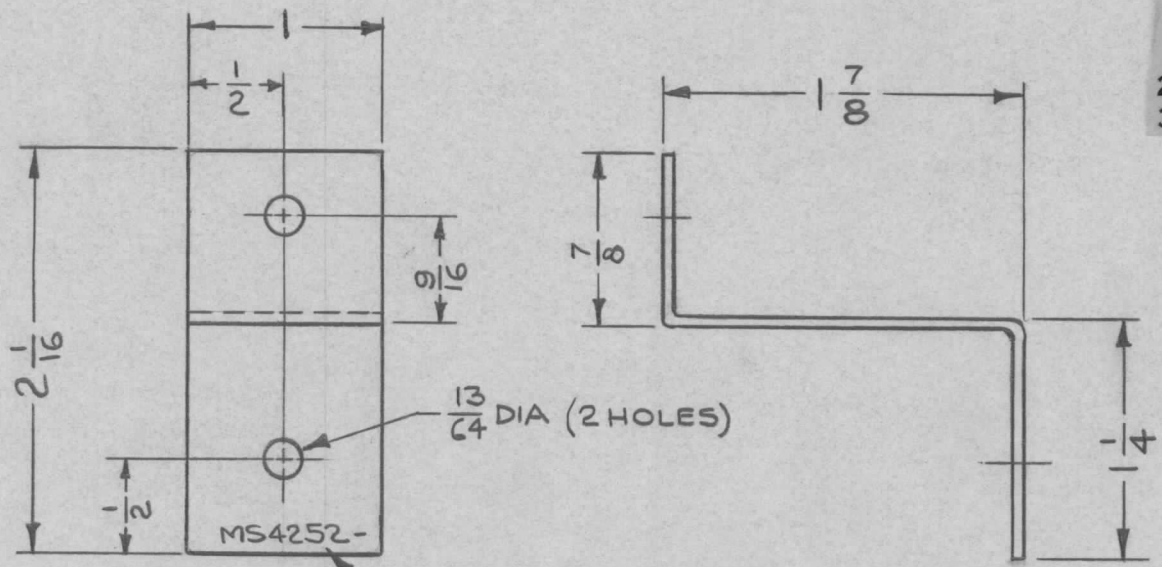
UNLESS OTHERWISE SPECIFIED:

1. USE MATERIAL THICKNESS FOR MAXIMUM RADIUS ON ALL BENDS
2. ALL ANGULAR BENDS 90 DEGREES
3. REMOVE ALL BURRS AND SHARP EDGES

SYM	DESCRIPTION	DATE	CH. NO.	DRAFTS	CHECKER	ENG. APP.	REQ. ITEM	PART NO.	O. POSE	DESCRIPTION	SYMBOL	
								.081 THK		THE TECHNICAL MATERIEL CORP.		
								STOCK SIZE		MAMARONECK, NEW YORK		
Ø	ORIGINAL RELEASE FOR PRODUCTION	1-7-65	Ø	JL				ALUMINUM		BRACKET, SWITCH LOCK		
X	EXPER. RELEASE	1-6-65		G.D.L.				MATERIAL				
	UNLESS OTHERWISE SPECIFIED DIMENSIONS ARE IN INCHES AND INCLUDE CHEMICALLY APPLIED OR PLATED FINISHES	SCALE	1:1					5052-H32		G.D.L. 1-6-65 @ 1-6-65		
	DECIMALS .X ± .05 .XX ± .01 .XXX ± .005	FRACTIONS ± 1/64 ANGLES ± 0° 30'	CODE A					TYPE & TEMPER	HEAT TREAT. SPEC.	DRAWN	CHECKED	FINAL APPROVAL
TOLERANCES								5404 YEL IRIDITE		<i>[Signature]</i>	<i>[Signature]</i>	MS4247 Ø
								FINISH & SPEC. NO.		ELEC. DES. APP.	MECH. DES. APP.	

REQ. PER UNIT	USED ON		MS4252	Ø
	MODEL	ASS'Y. NO.		
1	TER-25K-600B		JAN 4, 1965	

- UNLESS OTHERWISE SPECIFIED:
1. USE MATERIAL THICKNESS FOR MAXIMUM RADIUS ON ALL BENDS
 2. ALL ANGULAR BENDS 90 DEGREES
 3. REMOVE ALL BURRS AND SHARP EDGES

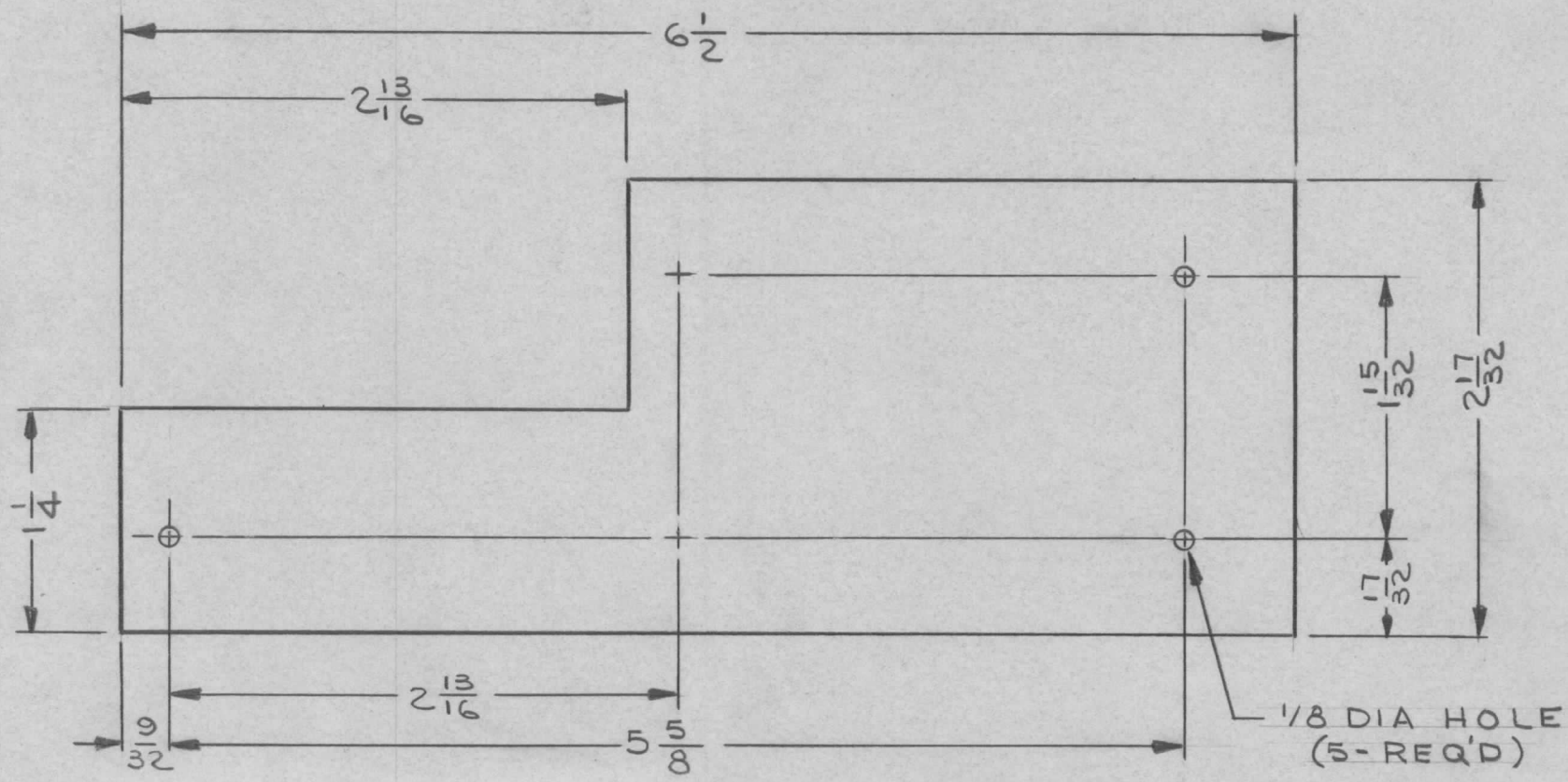


METAL STAMP TMC PART NO. 1/8 HIGH GOTHIC, WITH LATEST REVISION LETTER.

						REQ. ITEM	PART NO.	BUDETTI	DESCRIPTION	SYMBOL
							.040 THK		THE TECHNICAL MATERIEL CORP.	
							STOCK SIZE		MAMARONECK.	
							SOFT COPPER		NEW YORK	
Ø	ORIGINAL RELEASE FOR PRODUCTION	1.11.65	X	hbb					BRACKET, GROUND	
SYM	DESCRIPTION	DATE	CH. NO.	DRAFTS	CHECKER	ENG. APP.	MATERIAL			
UNLESS OTHERWISE SPECIFIED DIMENSIONS ARE IN INCHES AND INCLUDE CHEMICALLY APPLIED OR PLATED FINISHES		SCALE								
		1:1								
DECIMALS	TOLERANCES	FRACTIONS	CODE							
.X ± .05		± 1/64	A							
.XX ± .01		ANGLES								
.XXX ± .005		± 0° 30'								
							TYPE & TEMPER	HEAT TREAT. SPEC.	DRAWN	CHECKED
							NONE			
							FINISH & SPEC. NO.	ELEC. DES. APP.	MECH. DES. APP.	
										MS4252 Ø

REQ. PER UNIT	USED ON		
	MODEL	ASS'Y. NO.	DATE
1	RTPE-1		1/11/65

MS4256 \emptyset

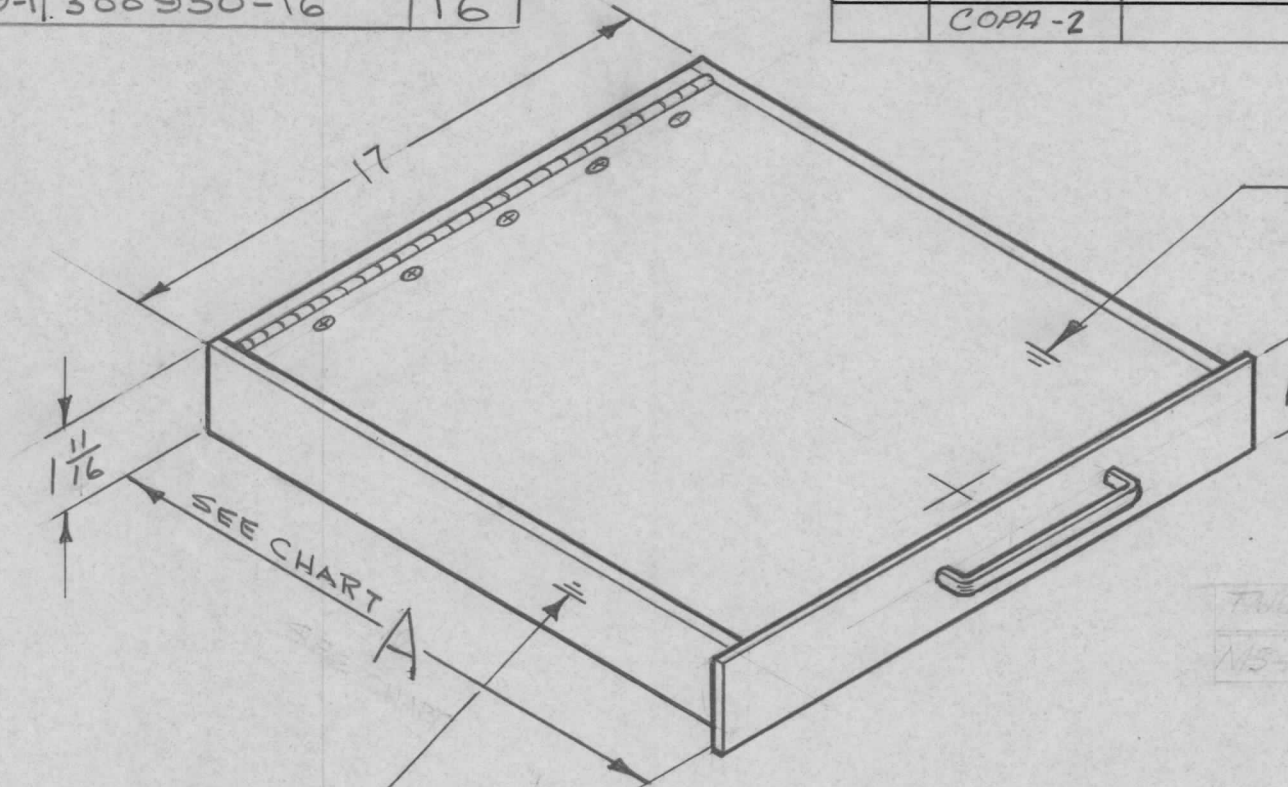


\emptyset	ORIGINAL RELEASE	8/17/65	\emptyset					REQ. ITEM	PART NO.	DESCRIPTION	SYMBOL	
X ₁	TMC P/N WAS MS4056	1.19.65	X ₁	JLB				.062 THK		THE TECHNICAL MATERIEL CORP.		
X	EXP. RELEASE	1/11/65		JL				STOCK SIZE		MAMARONECK, NEW YORK		
								ALUMINUM		COVER - RELAY PLATE		
SYM	DESCRIPTION	DATE	CH. NO.	DRAFTS	CHECKER	ENG. APP.		MATERIAL				
UNLESS OTHERWISE SPECIFIED DIMENSIONS ARE IN INCHES AND INCLUDE CHEMICALLY APPLIED OR PLATED FINISHES		SCALE	1:1					5052-H32		J. LESHINSKI	JLB 8/16/65	SEE 1/11/65 8/17/65
DECIMALS .X \pm .05 .XX \pm .01 .XXX \pm .005	TOLERANCES	FRACTIONS \pm 1/64 ANGLES \pm 0° 30'	CODE A					TYPE & TEMPER YELLOW IRIDITE 5404	HEAT TREAT. SPEC.	DRAWN	CHECKED U. JUREGAN 8/17/65	FINAL APPROVAL MS4256 \emptyset
							FINISH & SPEC. NO.	ELEC. DES. APP.	MECH. DES. APP.			

TMC NO	MFGR. PART NO	A
MS4259-1	300950-16	16

REQ. PER UNIT	USED ON	
	MODEL	DATE
	EC.PA-1	6.18.65
	COPA-2	6.18.65

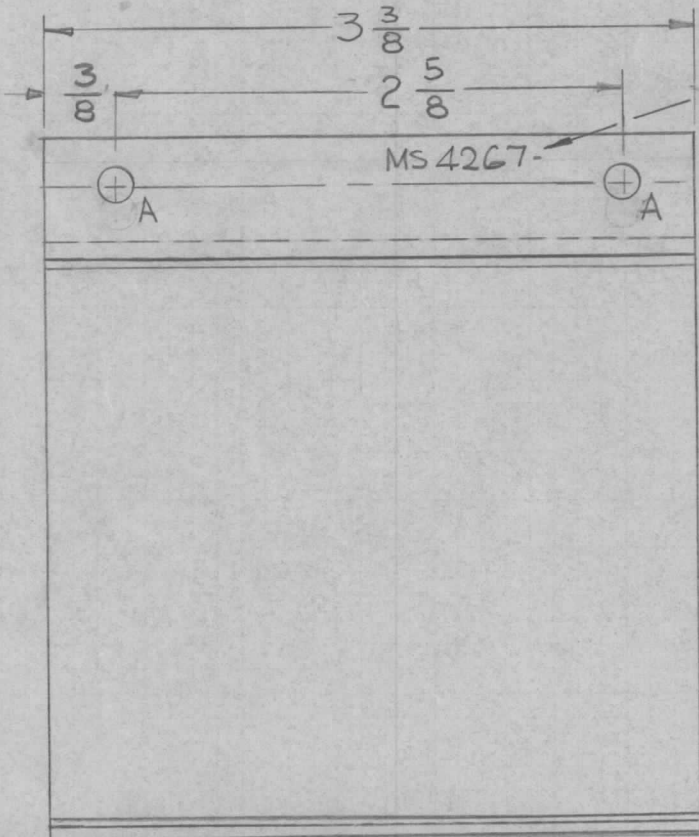
MS4259 ϕ



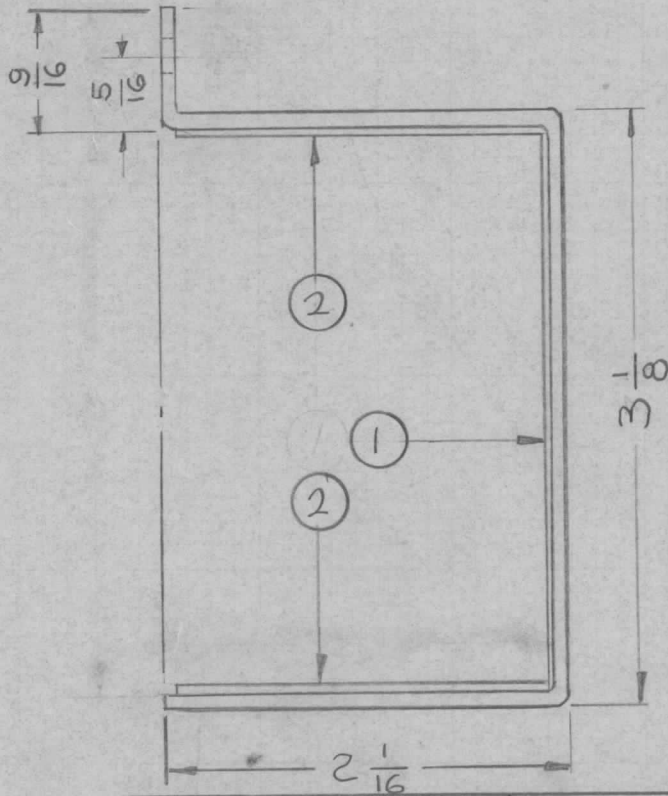
TUGIT. NO. WPG. PT. NO.
MS4259-1 300950-16

SYM	DESCRIPTION	DATE	CH. NO.	DRAFTS	CHECKER	ENG. APP.	REQ. ITEM	PART NO.	DESCRIPTION	SYMBOL									
	UNLESS OTHERWISE SPECIFIED DIMENSIONS ARE IN INCHES AND INCLUDE CHEMICALLY APPLIED OR PLATED FINISHES	SCALE					#	#	THE TECHNICAL MATERIEL CORP. MAMARONECK, NEW YORK	DRAWER, ACCESSORY									
	DECIMALS .X \pm .05 .XX \pm .01 .XXX \pm .005	FRACTIONS \pm 1/64 ANGLES \pm 0° 30'	CODE				#	#											
XI	ORIGINAL RELEASE TMC PT. NO. WAS MS4059	11/1/65 1-19-65	XI	lit					H. AUSTIN	11/1/65									
	TOLERANCES		C	5401-209 (300950-16)															

REQ. PER UNIT	USED ON			MS4267 A
	MODEL	ASSY. NO.	DATE	
1	GPT 10K	A4117	1-15-65	



METAL STAMP TMC P/N
1/8 HIGH GOTHIC W/LATEST
REV. LETTER.



HOLES:
A- 11/64 DIA. (2REQ)

UNLESS OTHERWISE SPECIFIED:

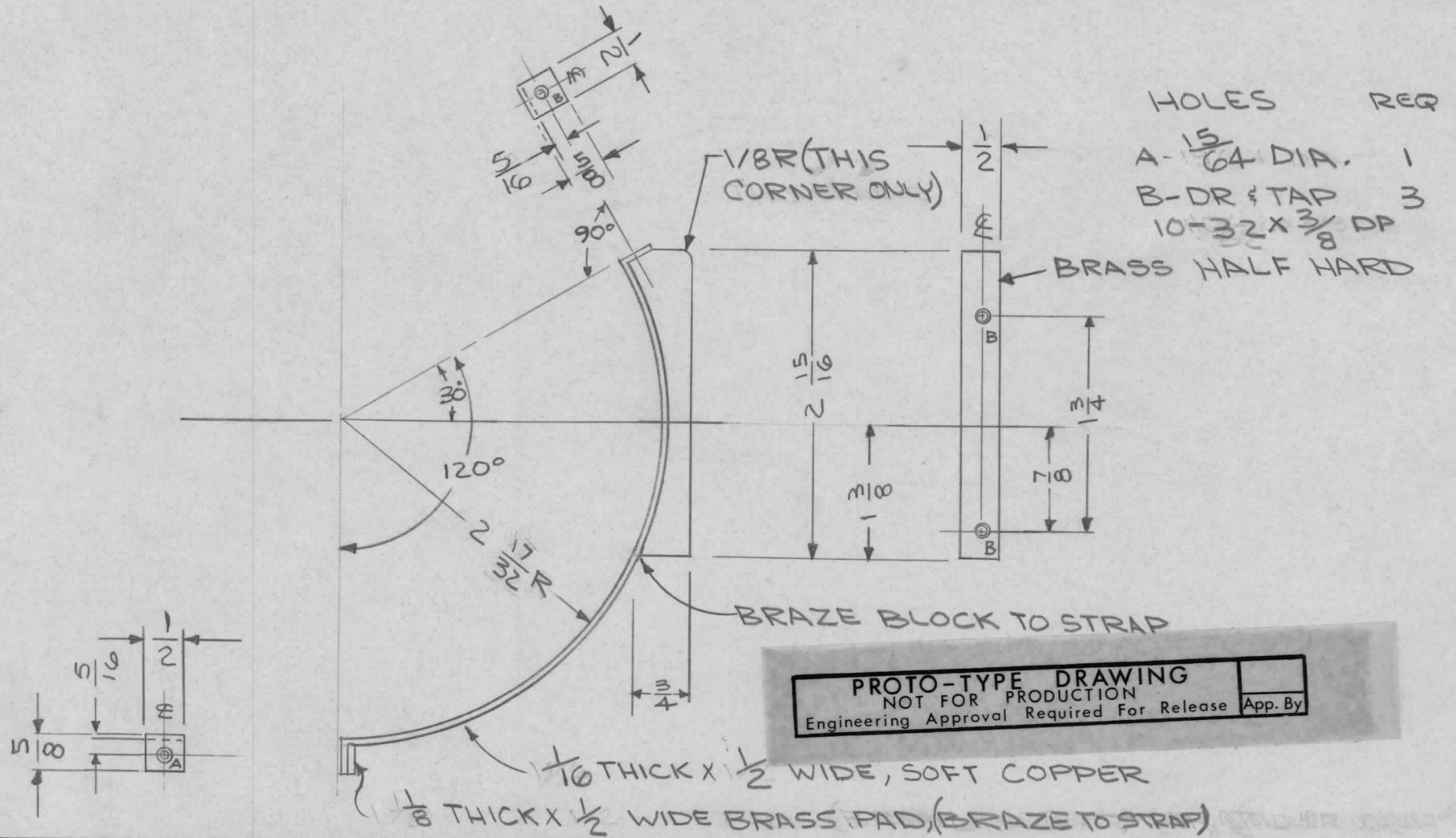
1. USE MATERIAL THICKNESS FOR MAXIMUM RADIUS ON ALL BENDS
2. ALL ANGULAR BENDS 90 DEGREES
3. REMOVE ALL BURRS AND SHARP EDGES

REF: LD1745

X	3	GL102	ADHESIVE		
2	2	IM 179-10	INS. SH., ELECT.		
1	1	IM 179-17	INS. SH., ELECT.		
REQ. ITEM	PART NO.		F. BUDETTI	DESCRIPTION	SYMBOL
	.064 THK		THE TECHNICAL MATERIEL CORP.		
	STOCK SIZE		MAMARONECK, NEW YORK		
	ALUMINUM		COVER, TERM. STRIP		
MATERIAL			5052 - H32		
TYPE & TEMPER		HEAT TREAT. SPEC.	DRAWN	CHECKED	FINAL APPROVAL
S404 YEL. IRIDITE					
FINISH & SPEC. NO.			ELEC. DES. APP.	MECH. DES. APP.	MS4267 A

A	IT 3. ADDED	6-22-65	14187	D.V.	8/15	203
Ø	ORIGINAL RELEASE FOR PRODUCTION	5.6.65	Ø	LL		
X ₁	TMC P/N WAS MS4067	1.15.65	X ₁	hB		
SYM	DESCRIPTION	DATE	CH. NO.	DRAFTS	CHECKER	ENG. APP.
UNLESS OTHERWISE SPECIFIED DIMENSIONS ARE IN INCHES AND INCLUDE CHEMICALLY APPLIED OR PLATED FINISHES		SCALE 1:1				
DECIMALS	FRACTIONS	CODE				
.X ± .05	± 1/64	A				
.XX ± .01	ANGLES					
.XXX ± .005	± 0° 30'					

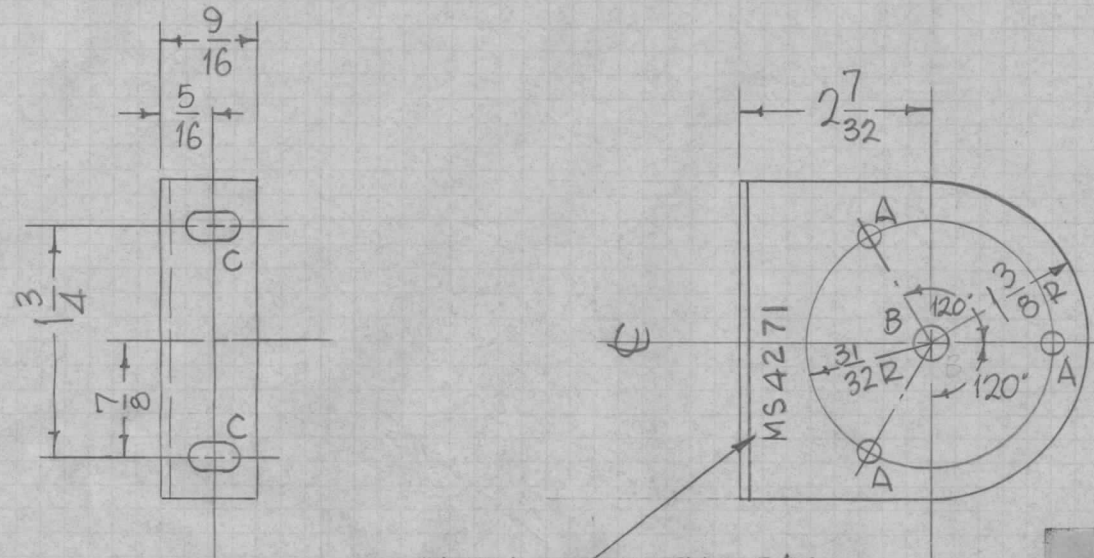
REQ. PER UNIT	USED ON			MS4270	X
	MODEL	ASS'Y. NO.	DATE		
6	TST-10K				



PROTO-TYPE DRAWING
NOT FOR PRODUCTION
Engineering Approval Required For Release

						REQ. ITEM	PART NO.	DESCRIPTION	MS23	SYMBOL
								THE TECHNICAL MATERIEL CORP.	MAMARONECK.	NEW YORK
X	REDRAWN, NO CHAGE	7.6.67	H	E				STRAP, COIL MTG		
SYM	DESCRIPTION	DATE	CH. NO.	DRAFTS	CHECKER	ENG. APP.				
UNLESS OTHERWISE SPECIFIED DIMENSIONS ARE IN INCHES AND INCLUDE CHEMICALLY APPLIED OR PLATED FINISHES		SCALE								
DECIMALS	TOLERANCES	FRACTIONS	CODE							
.X ± .05		± 1/64								
.XX ± .01		ANGLES								
.XXX ± .005		± 0° 30'								
							LANZA			
							SILVER PLATE S-245			
							FINISH & SPEC. NO.	ELEC. DES. APP.	MECH. DES. APP.	MS4270 X

REQ. PER UNIT	USED ON			MS4271	Ø
	MODEL	ASS'Y. NO.	DATE		
1	TST-10K				



HOLES	REQ.
A-11/64 DIA.	3
B-1/4 DIA	1
C-1/4X3/8 SLOT	2

METAL STAMP TMC P/No.
1/8 HIGH GOTHIC W/LATEST
REV. LETTER

- UNLESS OTHERWISE SPECIFIED:
1. USE MATERIAL THICKNESS FOR MAXIMUM RADIUS ON ALL BENDS
 2. ALL ANGULAR BENDS 90 DEGREES
 3. REMOVE ALL BURRS AND SHARP EDGES

SK3129

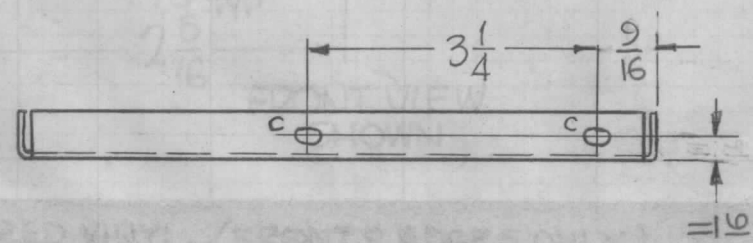
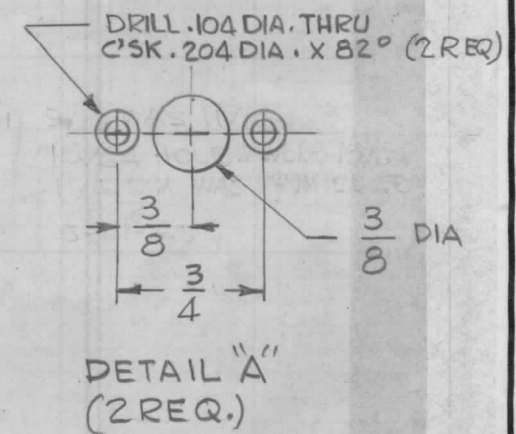
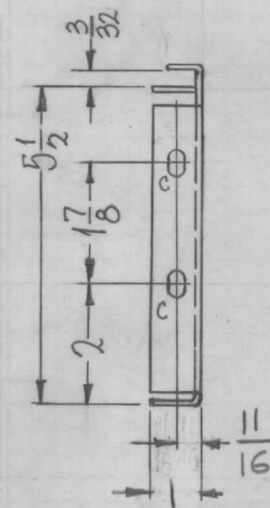
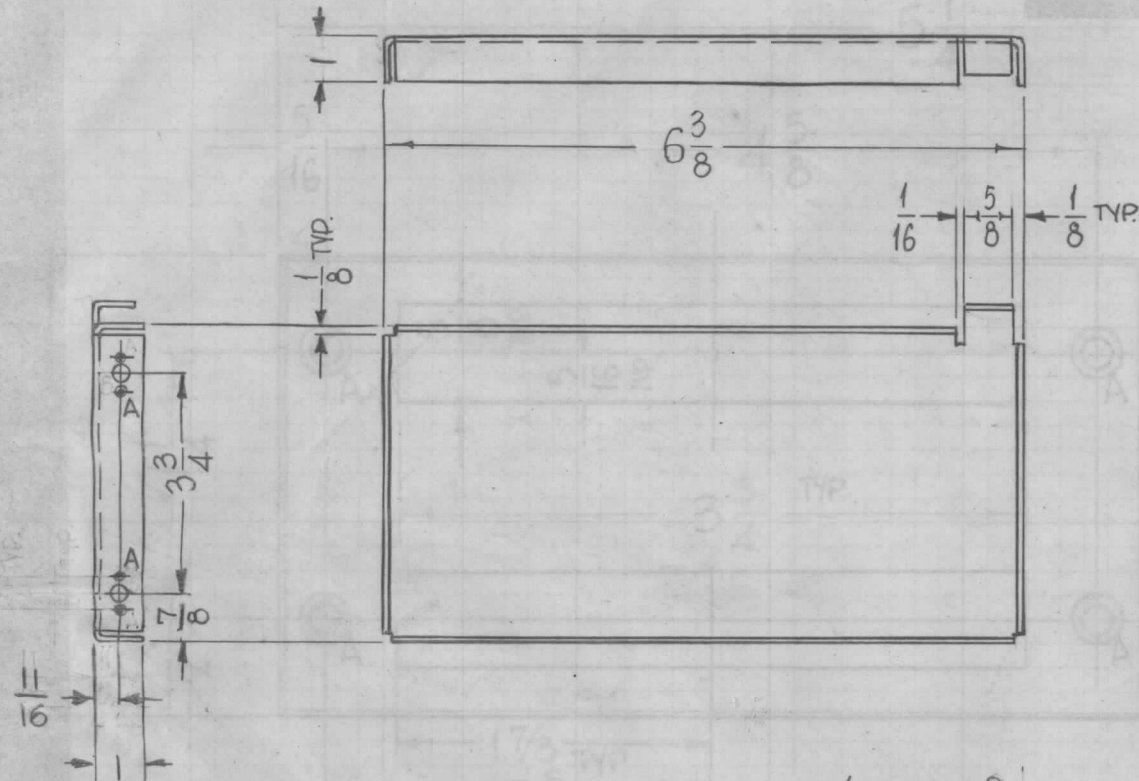
SYM	DESCRIPTION	DATE	CH. NO.	DRAFTS	CHECKER	ENG. APP.	REQ. ITEM	PART NO.	F. BUDETTI	DESCRIPTION	SYMBOL	
Ø	ORIGINAL RELEASE	7/15/69			W		1/16 THK			THE TECHNICAL MATERIEL CORP. MAMARONECK, NEW YORK	BRACKET & COIL MTG.	
X	METAL STAMP & UNLESS OTHERWISE SPEC. ADDED	7-7-65	X1		DL		COPPER					
							MATERIAL					
	UNLESS OTHERWISE SPECIFIED DIMENSIONS ARE IN INCHES AND INCLUDE CHEMICALLY APPLIED OR PLATED FINISHES	SCALE	DO NOT SCALE				HALF HARD		SRG			
	DECIMALS .X ± .05 .XX ± .01 .XXX ± .005	FRACTIONS ± 1/64 ANGLES ± 0° 30'	CODE A					TYPE & TEMPER	HEAT TREAT. SPEC.	DRAWN	CHECKED	FINAL APPROVAL
	TOLERANCES							SIL PL -		A.A.		MS4271
								FINISH & SPEC. NO.		ELEC. DES. APP.	MECH. DES. APP.	Ø

REQ. PER UNIT	USED ON		MS4272 ϕ
	MODEL	ASS'Y. NO.	
1	TST -10K		6-28-65

HOLES REQ.

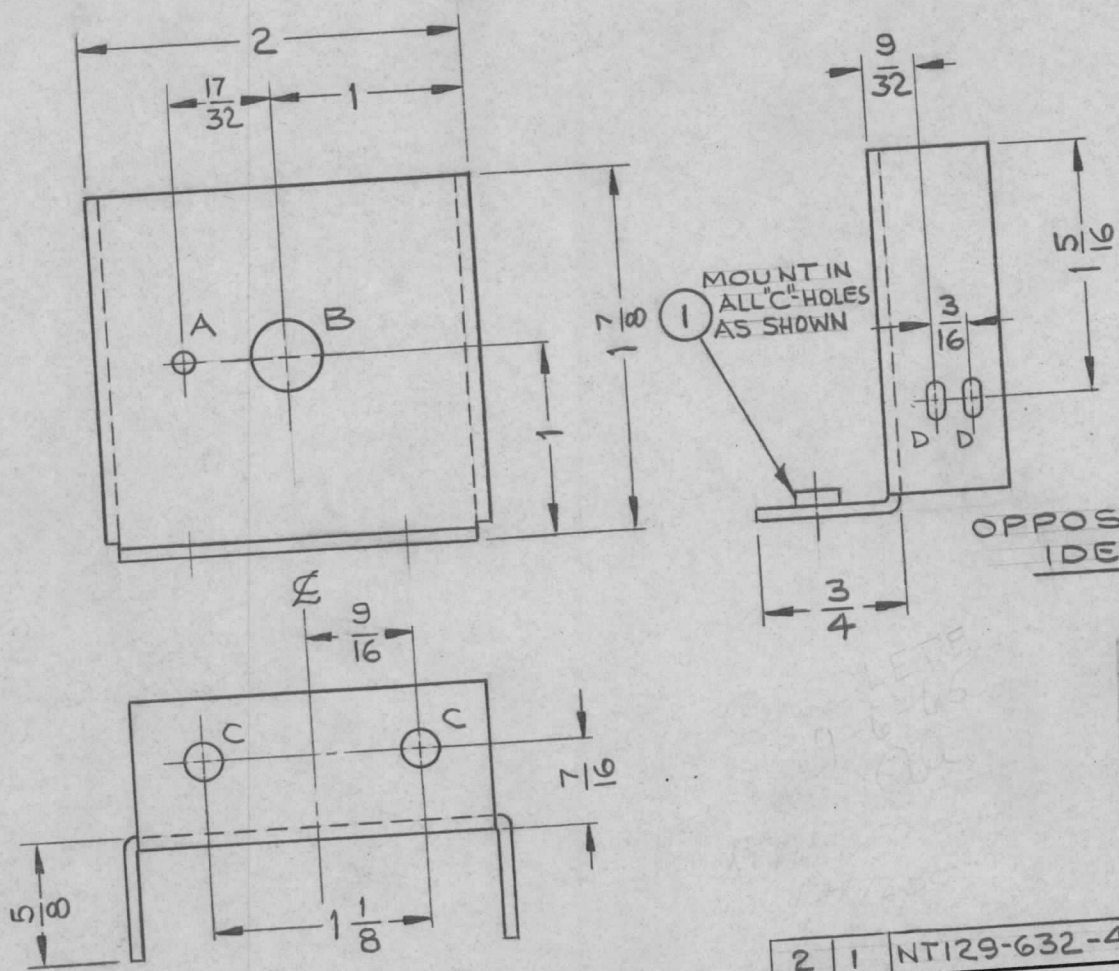
A - SEE DETAIL 2

C - 15/64 X 13/32 SLOT 4



REQ. ITEM	PART NO.	F. BUDETTI	DESCRIPTION	SYMBOL								
ϕ	ORIGINAL RELEASE	7/15/69										
X2	DETAIL "A" ADDED, WERE B & A HOLES	6-28-65	X2	G.D.L.								
X1	9/16 WAS 11/16, 15/64 HOLES WERE 13/64, 11/16 DIM WAS FROM EDGE	5-17-65	X1									
SYM	DESCRIPTION	DATE	CH. NO.	DRAFTS	CHECKER	ENG. APP.	REVISION	DATE	BY	DESCRIPTION		
UNLESS OTHERWISE SPECIFIED DIMENSIONS ARE IN INCHES AND INCLUDE CHEMICALLY APPLIED OR PLATED FINISHES							SCALE	DO NOT SCALE				
DECIMALS .X \pm .05 .XX \pm .01 .XXX \pm .005							FRACTIONS \pm 1/64 ANGLES \pm 0° 30'	CODE	A			
TOLERANCES												
5052 -H32		TYPE & TEMPER		HEAT TREAT. SPEC.		DRAWN		CHECKED		FINAL APPROVAL		
S404 YEL. IRIDITE		A.A.								MS4272 ϕ		
FINISH & SPEC. NO.							ELEC. DES. APP.		MECH. DES. APP.			

REQ. PER UNIT	USED ON		MS4288 ϕ
	MODEL	DATE	
1	TST (10K)	3-25-65	



HOLES:	REQ
A - 1/8 DIA	1
B - 3/8 DIA	1
C - .191 - .194 DIA.	2
D - 3/32 X 3/16 SLOT	4

UNLESS OTHERWISE SPECIFIED:

1. USE MATERIAL THICKNESS FOR MAXIMUM RADIUS ON ALL BENDS
2. ALL ANGULAR BENDS 90 DEGREES
3. REMOVE ALL BURRS AND SHARP EDGES
4. MOUNT INSERTS AFTER FINISHING

SYM	DESCRIPTION	DATE	CH. NO.	DRAFTS	CHECKER	ENG. APP.	REQ.	ITEM	PART NO.	DESCRIPTION	SYMBOL
ϕ	ORIGINAL RELEASE	7/15/69		W			2	1	NT129-632-4	NUT, PLAIN, SPLINE	C
									.064 THICK	THE TECHNICAL MATERIEL CORP. MAMARONECK, NEW YORK	
									ALUMINUM	BRACKET, MTG., RESISTOR	
									5052 H32	AWB	OR B 7/15/69
									S404 YEL. IRIDITE	AVC	J.S.
										ELEC. DES. APP.	MECH. DES. APP.
											MS4288 ϕ

DECIMALS	TOLERANCES	FRACTIONS
.X \pm .05		\pm 1/64
.XX \pm .01		ANGLES \pm 0° 30'
.XXX \pm .005		

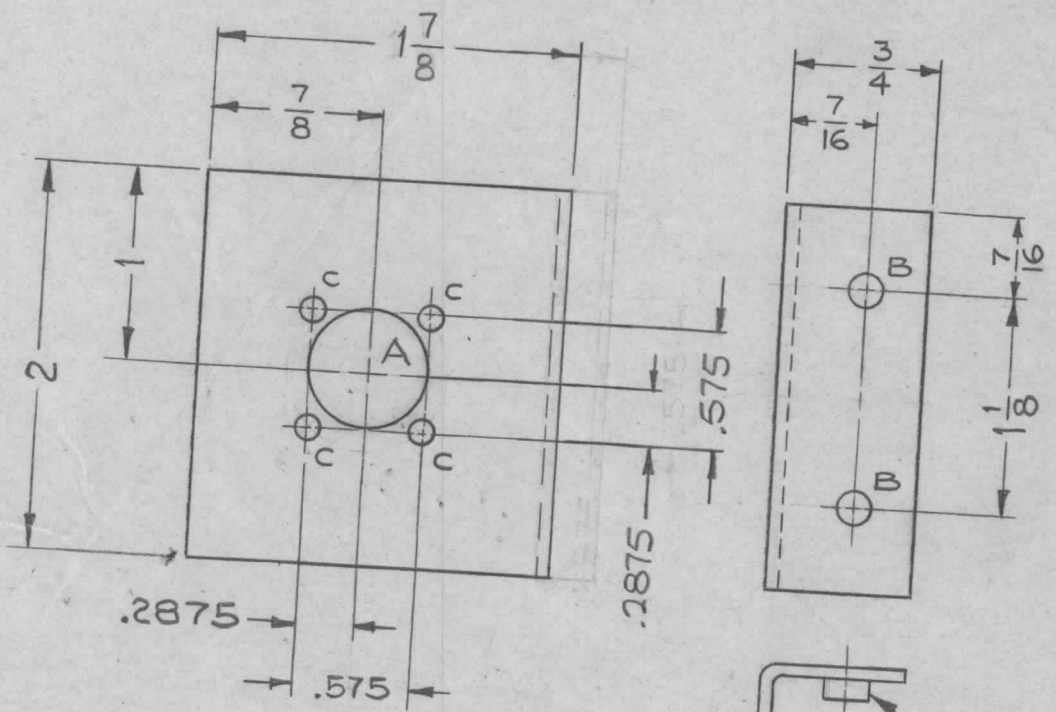
SCALE 1:1
CODE A

REPROVAL NO. 440H

23845

REQ. PER UNIT	USED ON		
	MODEL	ASSY. NO.	DATE
1	TST()10K		3-25-65

MS4291



HOLES:	REQ
A - 5/8 DIA +.015 -.000	1
B - .191 - .194 DIA	2
C - 9/64 DIA	4

UNLESS OTHERWISE SPECIFIED:

1. USE MATERIAL THICKNESS FOR MAXIMUM RADIUS ON ALL BENDS
2. ALL ANGULAR BENDS 90 DEGREES
3. REMOVE ALL BURRS AND SHARP EDGES
4. MOUNT INSERTS AFTER FINISHING

① MOUNT IT. 1 IN ALL 'B' HOLES AS SHOWN

									2	1	NT129-632-4	NUT, PLAIN, SPLINE	B		
									REQ.	ITEM	PART NO.	DESCRIPTION	SYMBOL		
											.064 THICK	THE TECHNICAL MATERIEL CORP. MAMARONECK, NEW YORK			
											STOCK SIZE	PLATE, MTG., MOTOR			
											ALUMINUM				
											MATERIAL				
											5052 H32				
											TYPE & TEMPER	HEAT TREAT. SPEC.	DRAWN	CHECKED	FINAL APPROVAL
											S404 YELL. IRIDITE		AVC	P.S.	MS4291
											FINISH & SPEC. NO.	ELEC. DES. APP.	MECH. DES. APP.		

UNLESS OTHERWISE SPECIFIED
DIMENSIONS ARE IN INCHES AND INCLUDE
CHEMICALLY APPLIED OR PLATED FINISHES

DECIMALS
.X ± .05
.XX ± .01
.XXX ± .005

FRACTIONS
± 1/64
ANGLES
± 0° 30'

TOLERANCES

DATE: 7/15/69
SCALE: 1:1
CODE: A

HOLES:

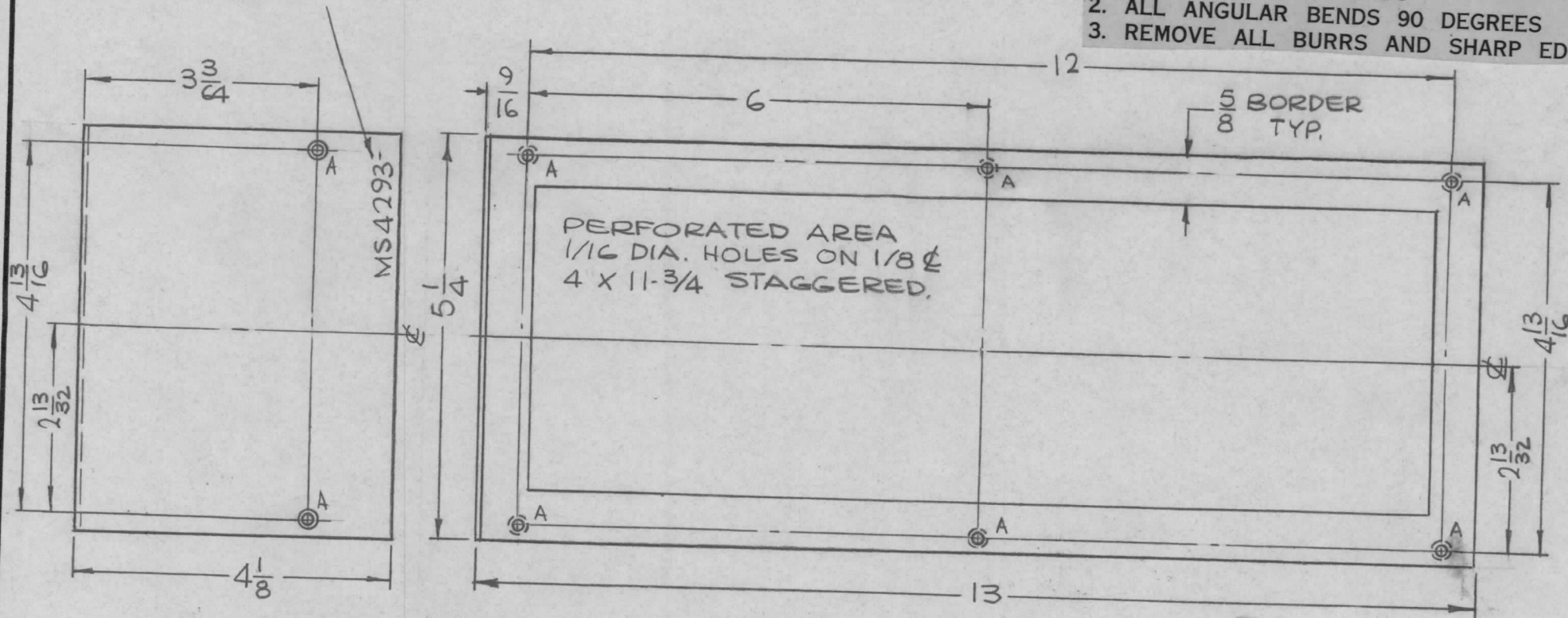
A ~ DR. 120 DIA. C'SINK 82° X .230 DIA. (8 REQ.)

MARK TMC PART NO. *MS4293*
 1/8 HIGH GOTHIC W/LATEST
 REV. LETTER.

REQ. PER UNIT	USED ON			MS4293 \emptyset
	MODEL	ASS'Y. NO.	DATE	
1	TSTE-10K	AX580	3-22-65	

UNLESS OTHERWISE SPECIFIED:

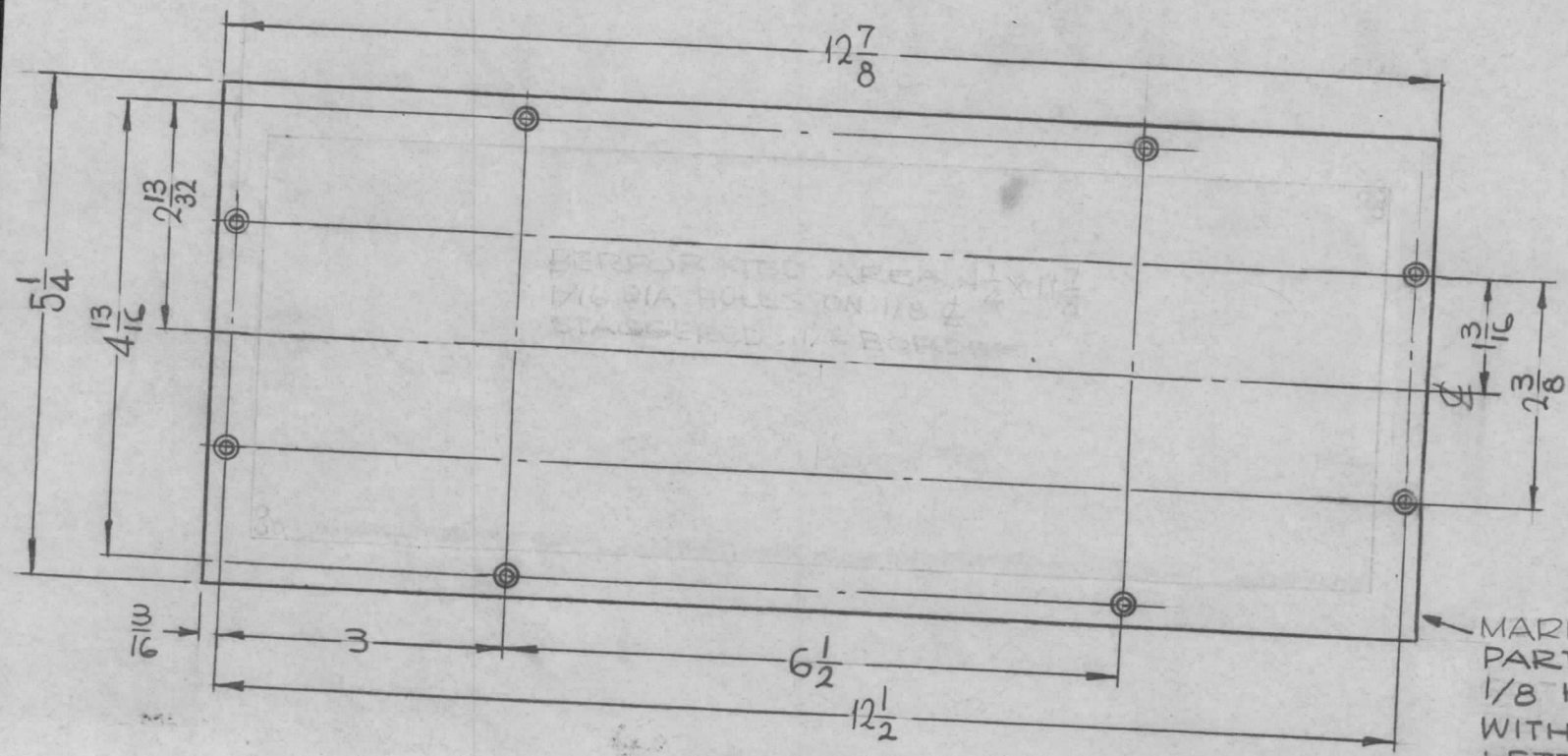
1. USE MATERIAL THICKNESS FOR MAXIMUM RADIUS ON ALL BENDS
2. ALL ANGULAR BENDS 90 DEGREES
3. REMOVE ALL BURRS AND SHARP EDGES



				REQ. ITEM	PART NO.	F. BUDETTI DESCRIPTION		SYMBOL
				.054 THICK		THE TECHNICAL MATERIEL CORP. MAMARONECK, NEW YORK		
				STOCK SIZE				
				ALUMINUM		PLATE, SIDE, MODULE		
				MATERIAL				
				5052-H32	SRG	OCB	OJ.B	
				TYPE & TEMPER	HEAT TREAT. SPEC.	DRAWN	CHECKED	FINAL APPROVAL
				S404 YEL. IRIDITE	QA 6-22-66			
				FINISH & SPEC. NO.	ELEC. DES. APP.	MECH. DES. APP.	MS4293 \emptyset	
UNLESS OTHERWISE SPECIFIED DIMENSIONS ARE IN INCHES AND INCLUDE CHEMICALLY APPLIED OR PLATED FINISHES		DATE	CH. NO.	DRAFTS	CHECKER	ENG. APP.		
		6.23.66	#	WHD		Ad		
TOLERANCES		SCALE						
DECIMALS .X ± .05 .XX ± .01 .XXX ± .005		1/2:1						
FRACTIONS ± 1/64 ANGLES ± 0° 30'		CODE						
		A						

REQ. PER UNIT	USED ON		
	MODEL	ASS'Y. NO.	DATE
5	TST(1)10K		3-19-65

MS4294



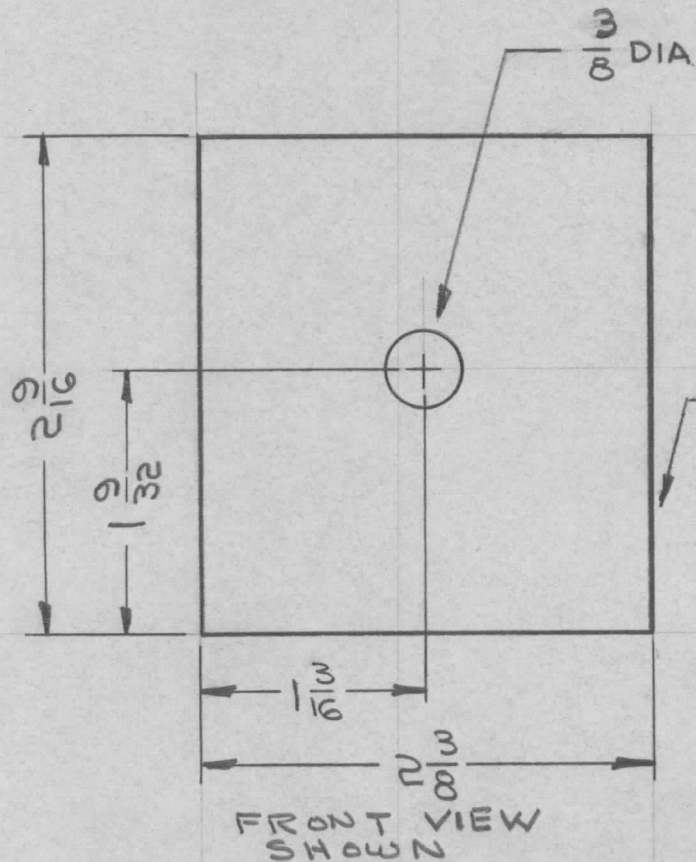
HOLES:
 A - DRILL .120 DIA.
 C'SINK 82° X
 .230 DIA.
 (8REQ.)

MARK TMC
 PART NO. (MS4924-)
 1/8 HIGH GOTHIC
 WITH LATEST REV.
 LETTER.
 ON OPPOSITE SIDE

REF: { LD1965-
 LD1966-
 LD1967.

ORIGINAL RELEASE FOR PRODUCTION				8-3-66	Q	RME	REQ. ITEM	PART NO.	F. BUDETTI	DESCRIPTION	SYMBOL	
PERFORATED AREA 4-1/4 X 11-7/8 DELETED				7-9-65	X1	G.D.L. DA	.051 THICK		THE TECHNICAL MATERIEL CORP. MAMARONECK, NEW YORK			
SYM	DESCRIPTION	DATE	CH. NO.	DRAFTS	CHECKER	ENG. APP.	ALUMINUM		COVER, BOTTOM, MODULE			
UNLESS OTHERWISE SPECIFIED DIMENSIONS ARE IN INCHES AND INCLUDE CHEMICALLY APPLIED OR PLATED FINISHES							SCALE	5052-H32	SRG	RS	Q.B.	
DECIMALS .X ± .05 .XX ± .01 .XXX ± .005							TOLERANCES	TYPE & TEMPER	HEAT TREAT. SPEC.	DRAWN	CHECKED	FINAL APPROVAL
FRACTIONS ± 1/64 ANGLES ± 0° 30'							CODE	5404 YEL IRIDITE				
							1/2 : 1	14-2 AL-COAT				MS4294
								FINISH & SPEC. NO.	ELEC. DES. APP.	MECH. DES. APP.		

REQ. PER UNIT	USED ON			MS 4298 \emptyset
	MODEL	ASS'Y. NO.	DATE	
1	HFIR-1		1-26-65	



METAL STAMP TMC
P/N ON REAR
W/LATEST REVISION
LETTER.

FINISH NOTES:

1. S404 - IRIDITE 14-2 AL-COAT.
2. S114 - ZINC CHROMATE PRIMER } FRONT AND
3. S115 - SMOOTH GRAY ENAMEL } EDGES ONLY

REF: LD1751

REQ. ITEM	PART NO.	EATON	DESCRIPTION	SYMBOL
	.032 THK		THE TECHNICAL MATERIEL CORP.	
	STOCK SIZE		MAMARONECK, NEW YORK	
\emptyset ORIGINAL RELEASE	8/17/65	\emptyset	ALUMINUM	PLATE, SWITCH
X EXPER. RELEASE	1-26-65	X	J.M.	(FRONT PANEL)
SYM	DESCRIPTION	DATE	CH. NO.	DRAFTS
	UNLESS OTHERWISE SPECIFIED DIMENSIONS ARE IN INCHES AND INCLUDE CHEMICALLY APPLIED OR PLATED FINISHES	SCALE	1:1	
DECIMALS	FRACTIONS	CODE		
.X \pm .05	\pm 1/64	A		
.XX \pm .01	ANGLES			
.XXX \pm .005	\pm 0° 30'			
	5052-H32		5052-H32	
	TYPE & TEMPER	HEAT TREAT. SPEC.	DRAWN	CHECKED
	SEE NOTES			
	FINISH & SPEC. NO.	ELEC. DES. APP.	MECH. DES. APP.	
				MS4298 \emptyset