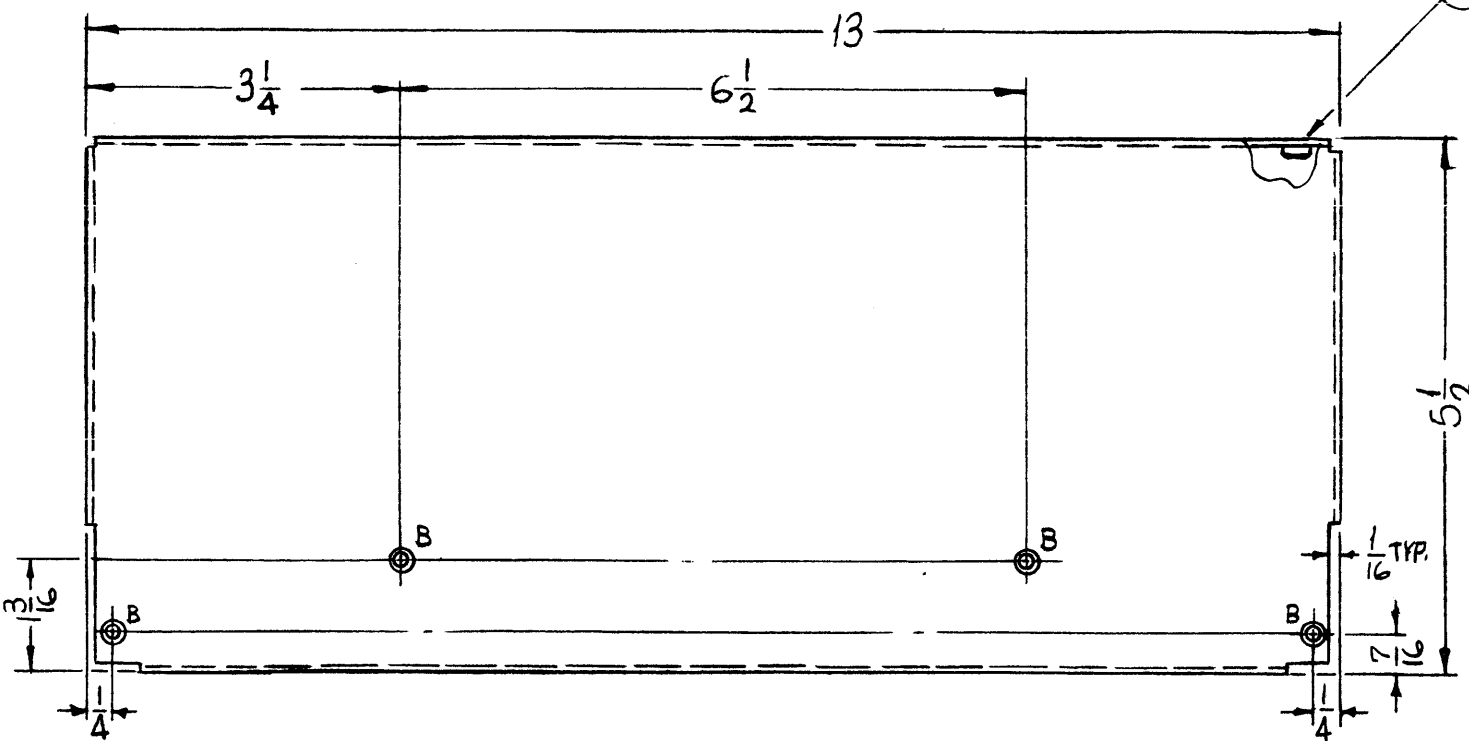
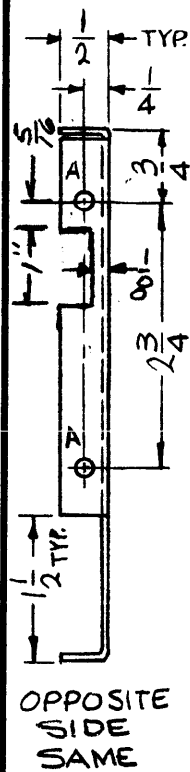
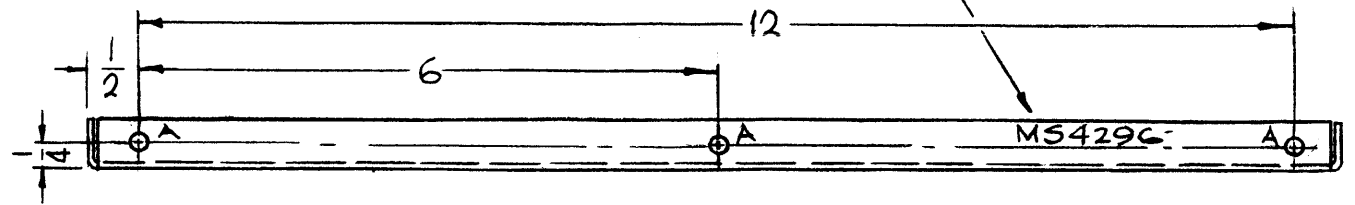


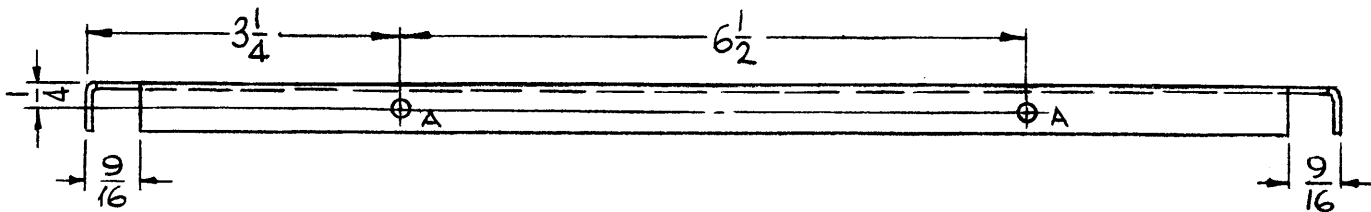
MARK TMC PART NO.  
1/8 HIGH GOTHIC W/LATEST  
REV. LETTER.

MS 4296

REVISIONS						
SYM	DESCRIPTION	DATE	E.M.N. NO.	DRAFT	CHKD	APPD
X1	METAL THK'S WAS .064					
X2	NT'S WERE NT129-440-4	4-13-65	X2	SRG	DA	
X3	ADDED 3/8 X 1" NOTCH	5/11/65	X3	AC		
Ø	ORIGINAL RELEASE FOR PRODUCTION	6.23.66	-#	WHD		FLC



HOLES	DESCRIPTION	REQ.
A	.161-.164 DIA.	9
B	DR. 120 DIA. C'SINK 82° X .230 DIA.	4



UNLESS OTHERWISE SPECIFIED:

1. USE MATERIAL THICKNESS FOR MAXIMUM RADIUS ON ALL BENDS
2. ALL ANGULAR BENDS 90 DEGREES
3. REMOVE ALL BURRS AND SHARP EDGES
4. MOUNT INSERTS AFTER FINISHING

NOTES

10	TST-10K	
Q'TY./UNIT	MODEL USED ON	ASS'Y. NO.
SCALE 1/2:1	CODE A	
THE CONTENTS OF THIS DRAWING ARE THE EXCLUSIVE PROPERTY OF THE TECHNICAL MATERIEL CORP. ITS UNAUTHORIZED USE OR REPRODUCTION IN WHOLE OR IN PART IS STRICTLY FORBIDDEN.		

9	1	NT129-440-3	NUT, PLAIN, SPLINE	A
REQ'D.	ITEM	PART NUMBER	DESCRIPTION	SYMBOL
F. BUDETTI LIST OF MATERIAL				
MATERIAL .051 THICK ALUMINUM 5052-H32			THE TECHNICAL MATERIEL CORP. MAMARONECK, NEW YORK	
FINISH 5404 YEL. IRIDITE			TITLE PLATE, SIDE, MODULE	
UNLESS OTHERWISE SPECIFIED DIMENSIONS ARE IN INCHES AND INCLUDE CHEMICALLY APPLIED OR PLATED FINISHES			DRAWN SRG	DATE 3-22-65
			CHECKED [Signature]	DATE 6-20-66
			ELECT. DES. [Signature]	DATE 6/22/66
			MECH. DES.	DATE
			FINAL APPROVAL [Signature]	
			DATE 6/23/66	
			MS4296	
			Ø	
			SHEET	
			REV. LTR.	