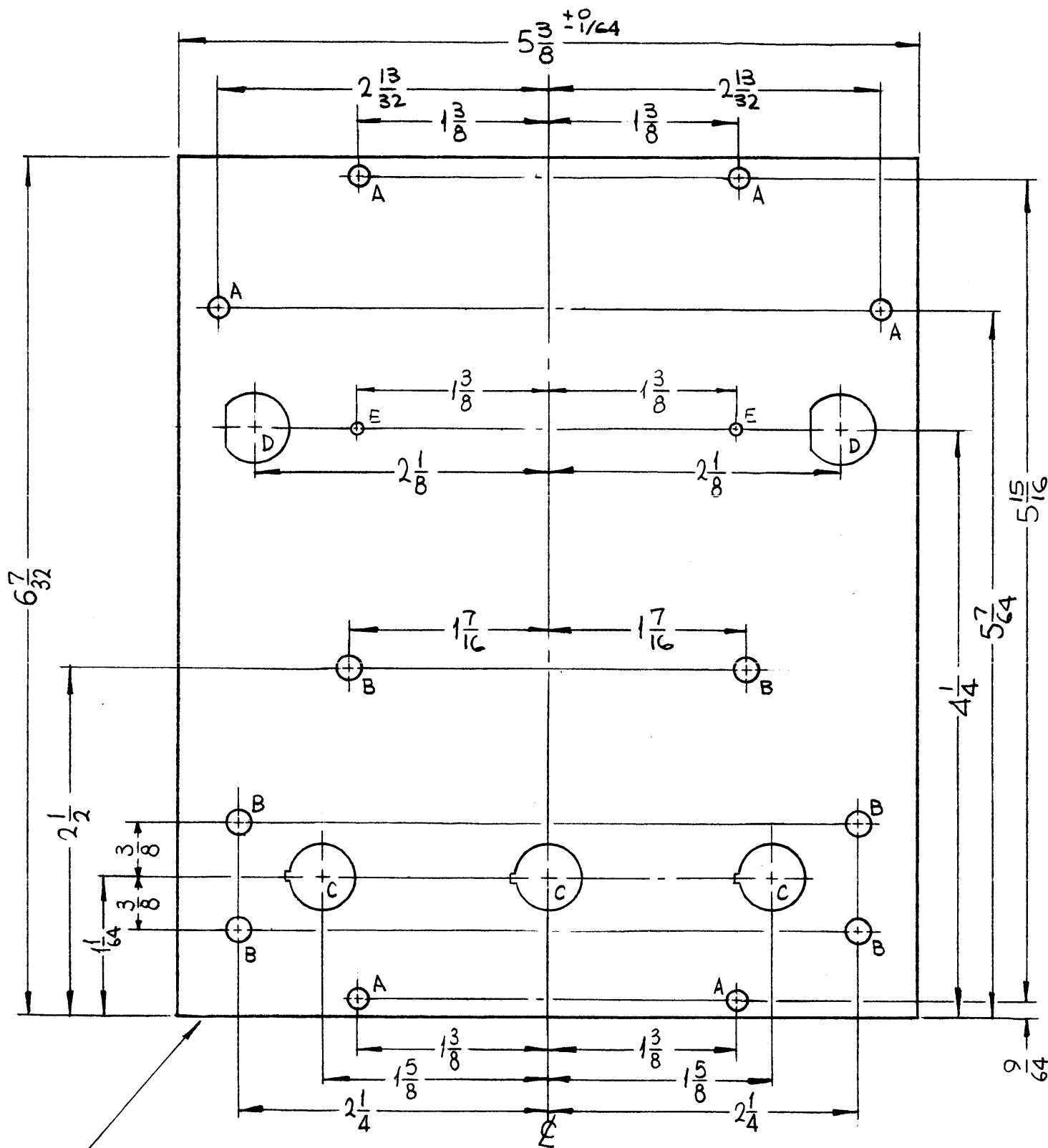


FRONT VIEW



METAL STAMP TMC PART NO (MS4292)  
1/8 HIGH GOTHIC W/LATEST  
REV. LETTER. (ON REAR)

NOTES

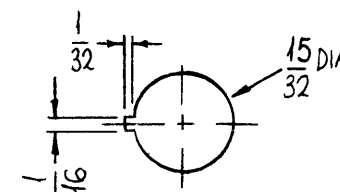
1	TSTE 10K	
Q'TY./UNIT	MODEL USED ON	ASS'Y. NO.
SCALE	CODE	
1:1	A	
THE CONTENTS OF THIS DRAWING ARE THE EXCLUSIVE PROPERTY OF THE TECHNICAL MATERIEL CORP. ITS UNAUTHORIZED USE OR REPRODUCTION IN WHOLE OR IN PART IS STRICTLY FORBIDDEN.		

MS4292

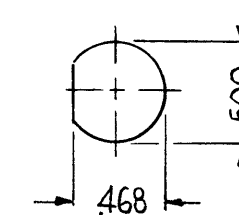
REVISIONS

SYM	DESCRIPTION	DATE	E.M.N. NO.	DRAFT	CHKD	APPD
X1	E HOLES ADDED	4-1-65	X1	SRG		
X2	E HOLES WERE DRILL STAP FOR 4-40	4-6-65	X2	SRG	DA	
Ø	ORIG. RELEASE FOR PRODUCTION	5-5-67	Ø	RG		

HOLES	DESCRIPTION	REQ.
A	9/64 DIA.	6
B	11/64 DIA.	6
C	SEE DETAIL	3
D	SEE DETAIL	2
E	.076 DIA.	2



C-DETAIL



D-DETAIL

FINISH NOTES:

- S404 - IRIDITE 14-2 AL-COAT.
- S114 - ZINC CHROMATE PRIMER) FRONT AND
- S115 - SMOOTH GRAY ENAMEL ) EDGES ONLY

MACHINING:

- MILL ALL EDGES.
- HOLES MUST BE DRILLED, UNLESS OTHERWISE SPECIFIED.
- LATERAL BOW OF PANEL MUST BE KEPT TO .031 TOLERANCE.
- PANEL MUST BE FREE OF ALL MACHINING MARKS, GOUGES AND SCRATCHES. IF NECESSARY, SAND FRONT OF PANEL WITH NO. 120 GRIT SANDPAPER.

REF: LD 1750

REQ'D.	ITEM	PART NUMBER	DESCRIPTION	SYMBOL
--------	------	-------------	-------------	--------

F. BUDETTI	LIST OF MATERIAL
MATERIAL 3/16 THICK ALUMINUM 2024-T3	THE TECHNICAL MATERIEL CORP. MAMARONECK, NEW YORK

FINISH SEE NOTES	TITLE PANEL, FRONT, SERVO MODULE
---------------------	-------------------------------------

UNLESS OTHERWISE SPECIFIED DIMENSIONS ARE IN INCHES AND INCLUDE CHEMICALLY APPLIED OR PLATED FINISHES	DRAWN SRG	DATE 3-15-65	FINAL APPROVAL <i>[Signature]</i>	DATE 5/1/67
DECIMALS .X ± .05 .XX ± .01 .XXX ± .005	TOLERANCES	FRACTIONS ± 1/64 ANGLES ± 0° 30'	ELECT. DES. da	MECH. DES. [Signature]
SHEET			MS4292	Ø
REV. LTR.				