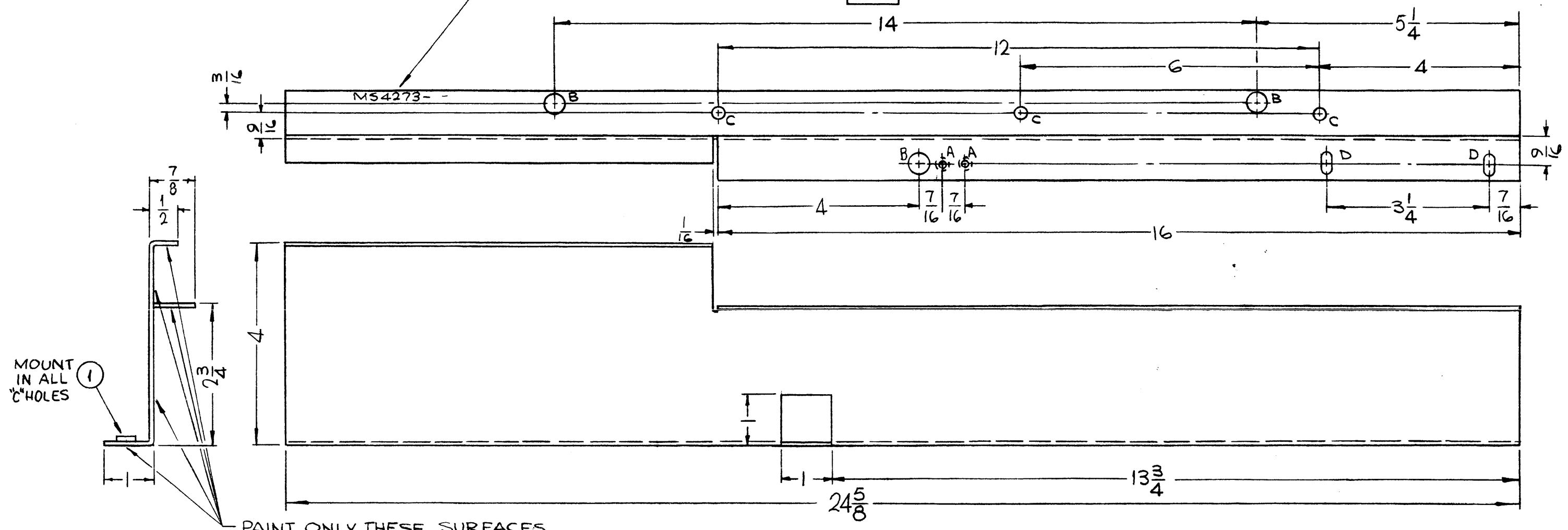


HOLES	DESCRIPTION	REQ.
A	DR. 144 DIA. C'SINK 82° X .284 D.	2
B	3/8 DIA.	3
C	.221-.224 DIA.	3
D	.203 X .406 SLOT	2

METAL STAMP TMC P/N
1/8 HIGH GOTHIC W/LATEST
REV. LETTER.

MS4273

REVISIONS					
SYM	DESCRIPTION	DATE	E.M.N. NO.	DRAFT	CHKD APPD
X1	2 D SLOTS ADDED	2-12-65	X1	SRG	
X2	REDRAWN & REVISED	4-6-65	X2	SRG	OA
X3	DIM 4 WAS 3/4, C'SINK WERE ON OPP. SIDE, HOLES REARRANGED SLOT. 7/16 DIM. WAS 3/8, FINISH ADDED TO 2 VIEWS	5-5-65	X3	SRG	OA
Ø	ORIGINAL RELEASE FOR PRODUCTION	12/20/65	Ø		JLD



PAINT ONLY THESE SURFACES.

UNLESS OTHERWISE SPECIFIED:

1. USE MATERIAL THICKNESS FOR MAXIMUM RADIUS ON ALL BENDS
2. ALL ANGULAR BENDS 90 DEGREES
3. REMOVE ALL BURRS AND SHARP EDGES
4. MOUNT INSERTS AFTER FINISHING

FINISH NOTES:

1. S404 - IRIDITE 14-2 AL-COAT.
2. S114 - ZINC CHROMATE PRIMER) FRONT AND
3. S115 - SMOOTH GRAY ENAMEL) EDGES ONLY

MS4273-1 AS SHOWN
MS4273-2 OPPOSITE HAND

3	1	NT129-832-4	NUT, PLAIN, SPLINE	C
REQ'D.	ITEM	PART NUMBER	DESCRIPTION	SYMBOL

F. BUDETTI	LIST OF MATERIAL
MATERIAL .061 THICK ALUMINUM 5052-H32	THE TECHNICAL MATERIEL CORP. MAMARONECK, NEW YORK
FINISH SEE NOTES	TITLE BRACKET, SUPPORT, FRONT PANEL

1	TST-10K	
Q'TY./UNIT	MODEL USED ON	ASS'Y. NO.
SCALE 1/2"=1"	CODE A	

UNLESS OTHERWISE SPECIFIED DIMENSIONS ARE IN INCHES AND INCLUDE CHEMICALLY APPLIED OR PLATED FINISHES		DRAWN SRG	DATE 3-31-65	FINAL APPROVAL [Signature]	DATE 12/20/65
DECIMALS .X ± .05 .XX ± .01 .XXX ± .005	TOLERANCES	CHECKED [Signature]	DATE 12/20/65	DATE	DATE
FRACTIONS ± 1/64 ANGLES ± 0° 30'		ELECT. DES. [Signature]	DATE	DATE	DATE
		MECH. DES. [Signature]	DATE	DATE	DATE
		ML [Signature]	DATE 12/22/65	SHEET MS4273	REV. LTR. Ø

NOTES

THE CONTENTS OF THIS DRAWING ARE THE EXCLUSIVE PROPERTY OF THE TECHNICAL MATERIEL CORP. ITS UNAUTHORIZED USE OR REPRODUCTION IN WHOLE OR IN PART IS STRICTLY FORBIDDEN.