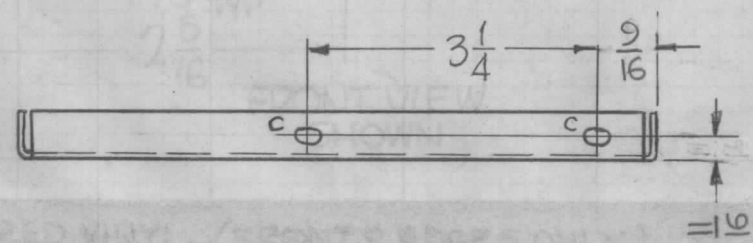
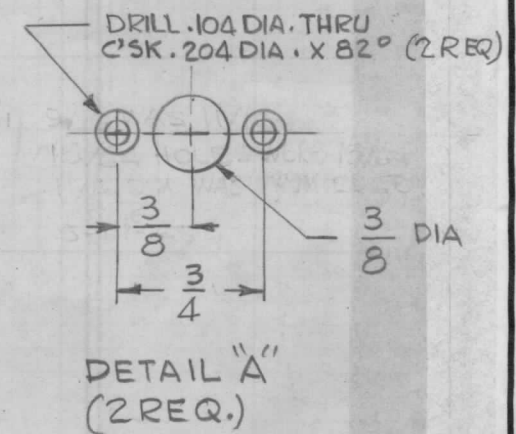
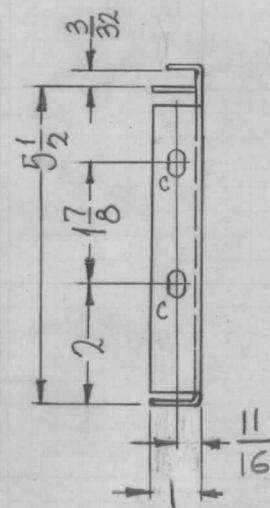
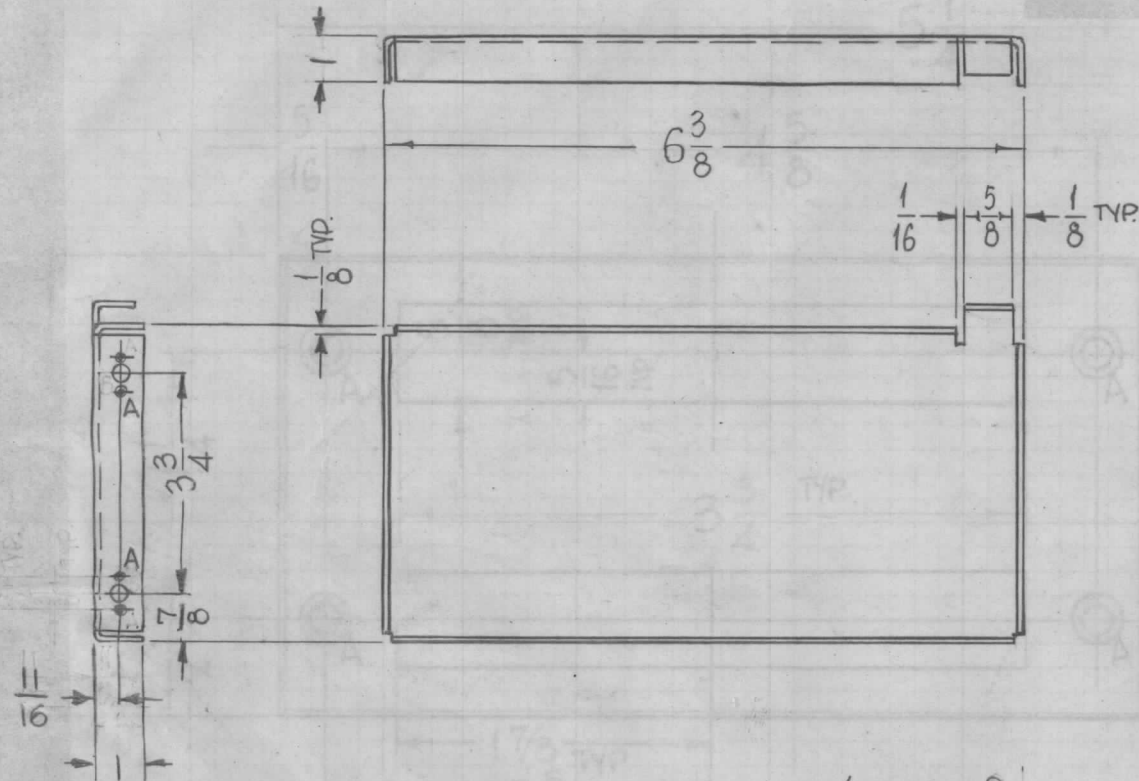


REQ. PER UNIT	USED ON		MS4272 ϕ
	MODEL	ASS'Y. NO.	
1	TST -10K		6-28-65

HOLES REQ.

A - SEE DETAIL 2

C - 15/64 X 13/32 SLOT 4



REQ. ITEM	PART NO.	F. BUDETTI	DESCRIPTION	SYMBOL							
ϕ	ORIGINAL RELEASE	7/15/69									
X2	DETAIL "A" ADDED, WERE B & A HOLES	6-28-65	X2 G.D.L.								
X1	9/16 WAS 11/16, 15/64 HOLES WERE 13/64, 11/16 DIM WAS FROM EDGE	5-17-65	X1								
SYM	DESCRIPTION	DATE	CH. NO.	DRAFTS	CHECKER	ENG. APP.	REVISION	DATE	BY	DESCRIPTION	
UNLESS OTHERWISE SPECIFIED DIMENSIONS ARE IN INCHES AND INCLUDE CHEMICALLY APPLIED OR PLATED FINISHES							SCALE	DO NOT SCALE			
DECIMALS .X \pm .05 .XX \pm .01 .XXX \pm .005							TOLERANCES	FRACTIONS \pm 1/64 ANGLES \pm 0° 30'			
CODE A							5052 -H32				
TYPE & TEMPER							HEAT TREAT. SPEC.		DRAWN		CHECKED
S404 YEL. IRIDITE							A.A.		G.D.L.		B C
FINISH & SPEC. NO.							ELEC. DES. APP.		MECH. DES. APP.		FINAL APPROVAL
											MS4272 ϕ