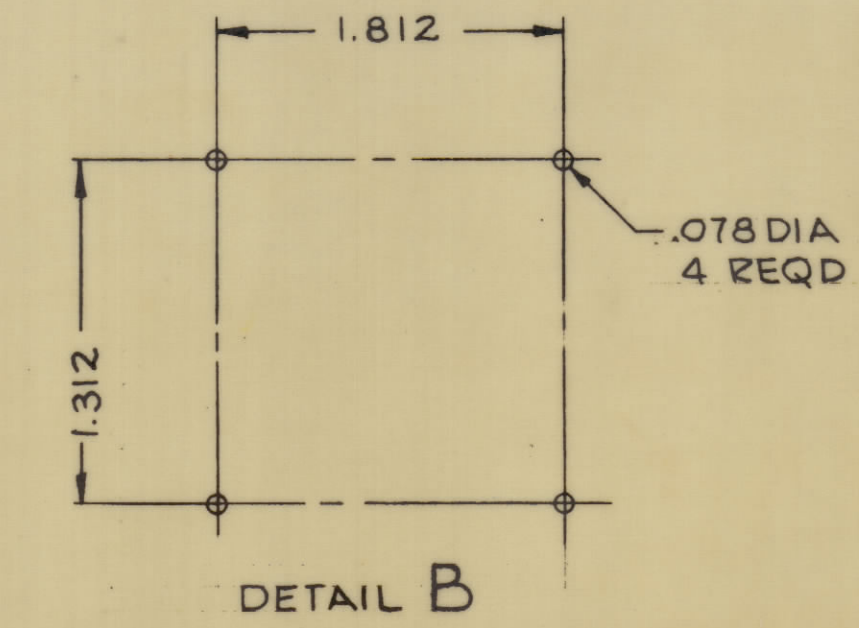
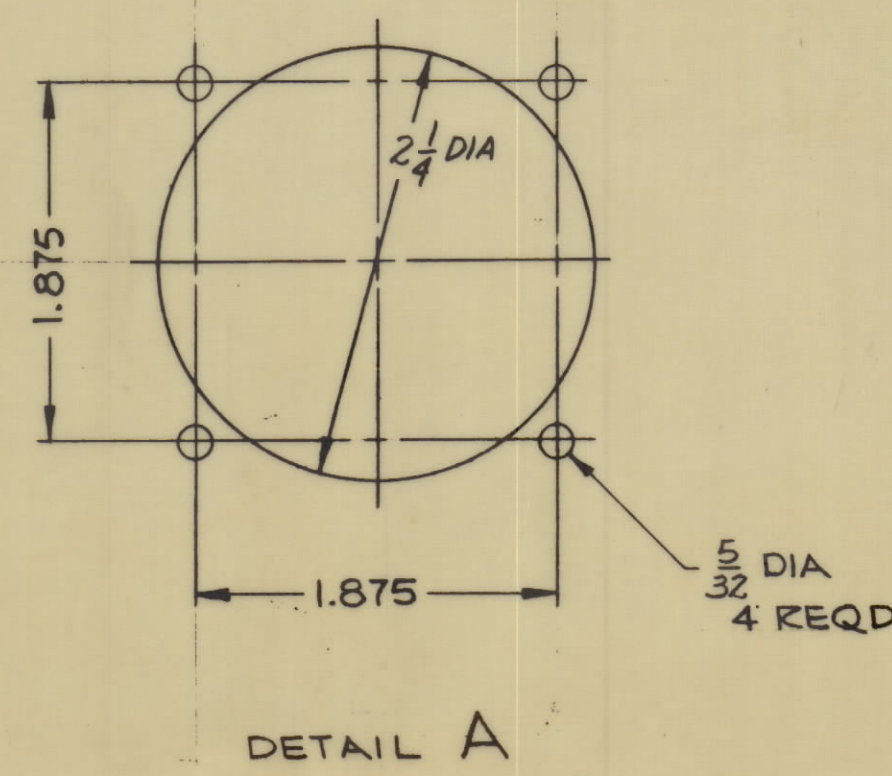
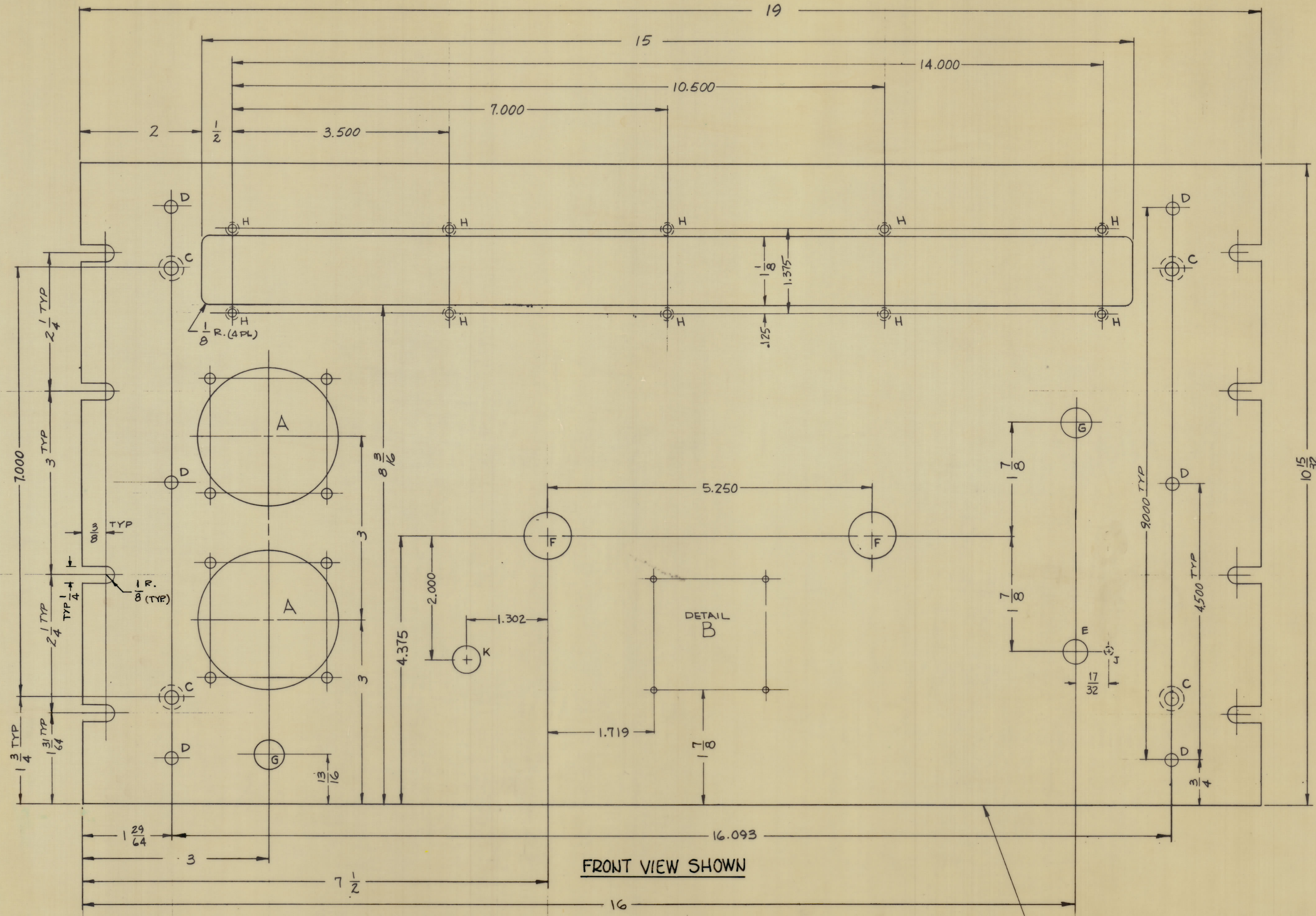


REVISIONS							
ZONE	SYM	DESCRIPTION	DATE	E.M.N. NO.	DRAFT	CHKD	APPD
X		EXPER. RELEASE	1-18-65		G.D.L.		
X1		TMC P/N WAS MS4068	1-18-65	X1	AB		
X2		DIMS SLOT ADDED	3-25-65	X2	C.D.L.		
Ø		ORIGINAL RELEASE	3-25-65		C.D.L.		



HOLE LEGEND		
HOLE	DESCRIPTION	REQD
A	SEE DETAIL	2
B	SEE DETAIL	1
C	.196 DIA-CSK B2 X .390 DIA (10-32)	4
D	3/16 DIA	6
E	3/8 DIA	1
G	15/32 DIA	2
H	DR #TAP #3-48	10
F	3/4 DIA	2
J	.130 D. X 3/32 DEEP ON REAR OF PANEL	1
K	7/16 DIA	1

- MACHINING:**
- MILL ALL EDGES.
 - Holes MUST BE DRILLED, UNLESS OTHERWISE SPECIFIED.
 - LATERAL BOW OF PANEL MUST BE KEPT TO .031 TOLERANCE.
 - PANEL MUST BE FREE OF ALL MACHINING MARKS, GOUGES AND SCRATCHES. IF NECESSARY, SAND FRONT OF PANEL WITH NO. 120 GRIT SANDPAPER.
- FINISH NOTES:**
- S404 - IRIDITE 14-2 AL-COAT.
 - S114 - ZINC CHROMATE PRIMER) FRONT AND
 - S115 - SMOOTH GRAY ENAMEL) EDGES ONLY

METAL STAMP TMC PART NO. 1/8 HIGH GOTHIC ON REAR OF PANEL W/LATEST REVISION LETTER

REF: LD 1744

REQ'D.	ITEM	PART NUMBER	DESCRIPTION	SYMBOL
	J. ANGER LIST OF MATERIAL			
	MATERIAL		THE TECHNICAL MATERIEL CORP.	
	3/16 ALUMINUM		MAMARONECK, NEW YORK	
	2024-T3			
	FINISH		TITLE	
	SEE NOTES		PANEL, FRONT, MACHINING	
	UNLESS OTHERWISE SPECIFIED		DRAWN G.D.L. DATE 1-18-64	
	DIMENSIONS ARE IN INCHES AND INCLUDE		CHECKED JCB DATE 3/26/65	
	CHEMICALLY APPLIED OR PLATED FINISHES		ELECT. DES. J. Anger DATE 3/25/65	
	DECIMALS ±.001		MECH. DES. DATE	
	FRACTIONS ±.004		TOLERANCES ±.004	
	ANGLES ±.01		±.005	
	RADIUS ±.005		±.005	

QTY/UNIT	MODEL USED ON	ASSY. NO.
1	CHGR-3	A4146
SCALE	1:1	

NOTES

MS 4268