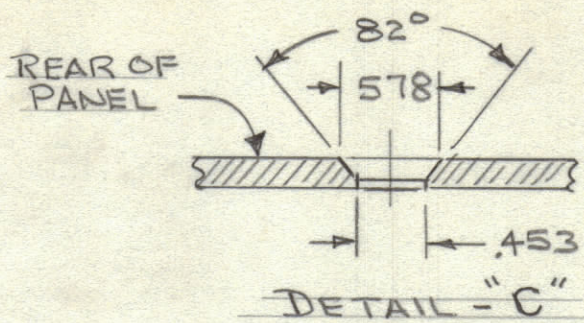
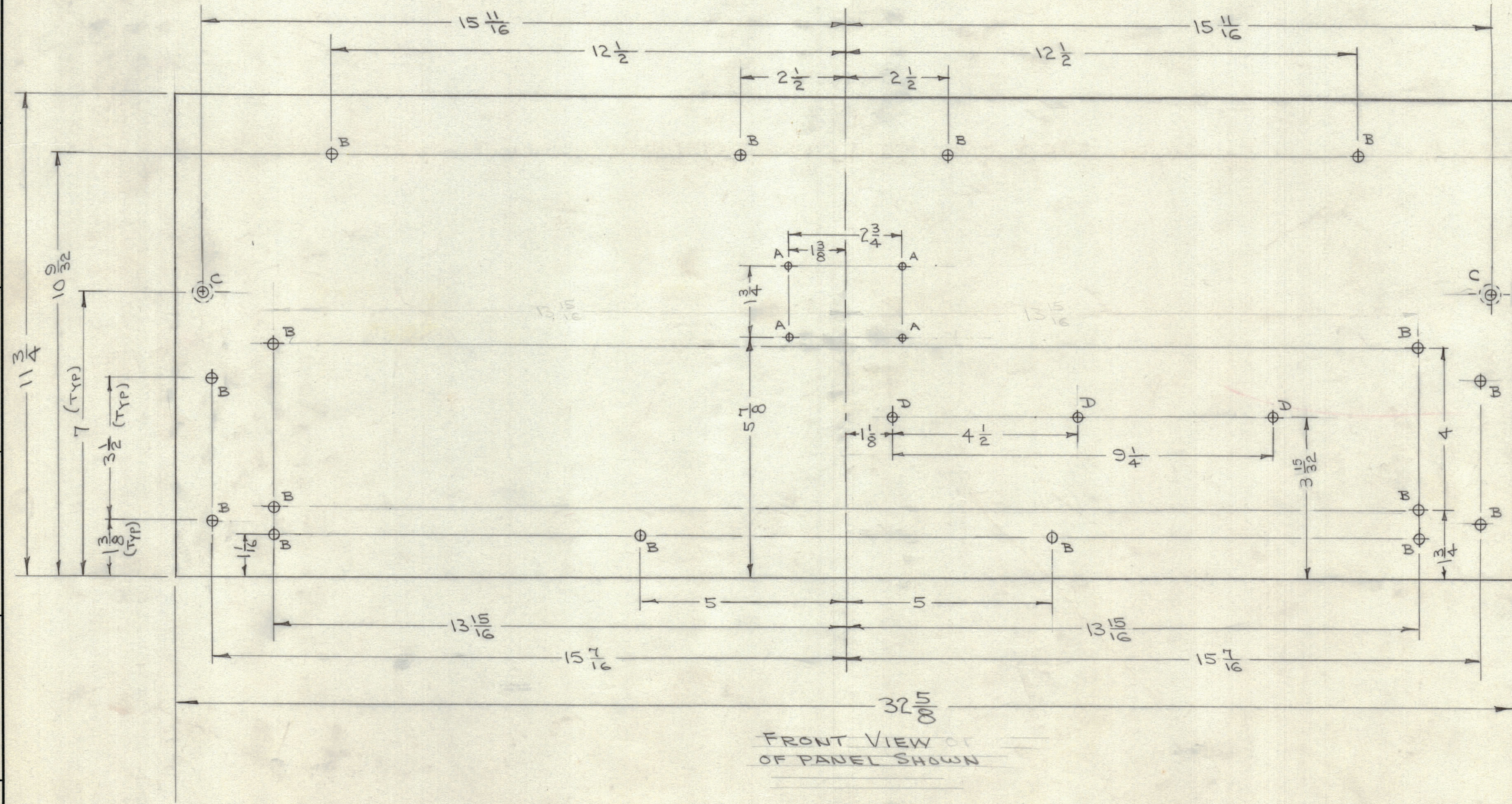


SYM	DESCRIPTION	REQ
A	.076 DIA	4
B	15/64 DIA	16
C	SEE DETAIL	2
D	13/64 DIA	3



REVISIONS							
ZONE	SYM	DESCRIPTION	DATE	E.M.N. NO.	DRAFT	CHKD	APPD
	Ø	ORIGINAL RELEASE FOR PROD	1-19-66				
	A	3-15/32 WAS 4-1/32	3-23-66	15996			



NOTE:
MARK TMC PART NO
ON REAR OF PANEL
1/8 HIGH GOTHIC
W/LATEST REVISION.

①
MOUNT
IN "C" HOLE
AFTER
FINISHING

MS4262 A

MACHINING:

1. MILL ALL EDGES.
2. HOLES MUST BE DRILLED, UNLESS OTHERWISE SPECIFIED.
3. LATERAL BOW OF PANEL MUST BE KEPT TO .031 TOLERANCE.
4. PANEL MUST BE FREE OF ALL MACHINING MARKS, GOUGES AND SCRATCHES. IF NECESSARY, SAND FRONT OF PANEL WITH NO. 120 GRIT SANDPAPER.

FINISH NOTES:

1. S404 - IRIDITE 14-2 AL-COAT.
2. S114 - ZINC CHROMATE PRIMER } FRONT AND
3. S115 - SMOOTH GRAY ENAMEL } EDGES ONLY

FRONT VIEW OF
OF PANEL SHOWN

2	1	NT 124	INSERT, CAPTIVE	C
REQ'D.	ITEM	PART NUMBER	DESCRIPTION	SYMBOL
BUDETTI LIST OF MATERIAL				
MATERIAL 3/16 THICK ALUMINUM 2024-T3			THE TECHNICAL MATERIEL CORP. MAMARONECK, NEW YORK	
FINISH SEE NOTES			TITLE PANEL, FRONT	
UNLESS OTHERWISE SPECIFIED DIMENSIONS ARE IN INCHES AND INCLUDE CHEMICALLY APPLIED OR PLATED FINISHES			DRAWN HRC	DATE 1-18-66
DECIMALS .X ± .05 .XX ± .01 .XXX ± .005			CHECKED [Signature]	DATE 1-19-66
FRACTIONS ± 1/64 ANGLES ± 0° 30'			ELECT. DES. gg	DATE
TOLERANCES			MECH. DES. [Signature]	DATE
THE CONTENTS OF THIS DRAWING ARE THE EXCLUSIVE PROPERTY OF THE TECHNICAL MATERIEL CORP. ITS UNAUTHORIZED USE OR REPRODUCTION IN WHOLE OR IN PART IS STRICTLY FORBIDDEN.			FINAL APPROVAL [Signature]	
			DATE 1-19-66	
			MS4262 - A	
			SHEET	
			REV. LTR.	

NOTES