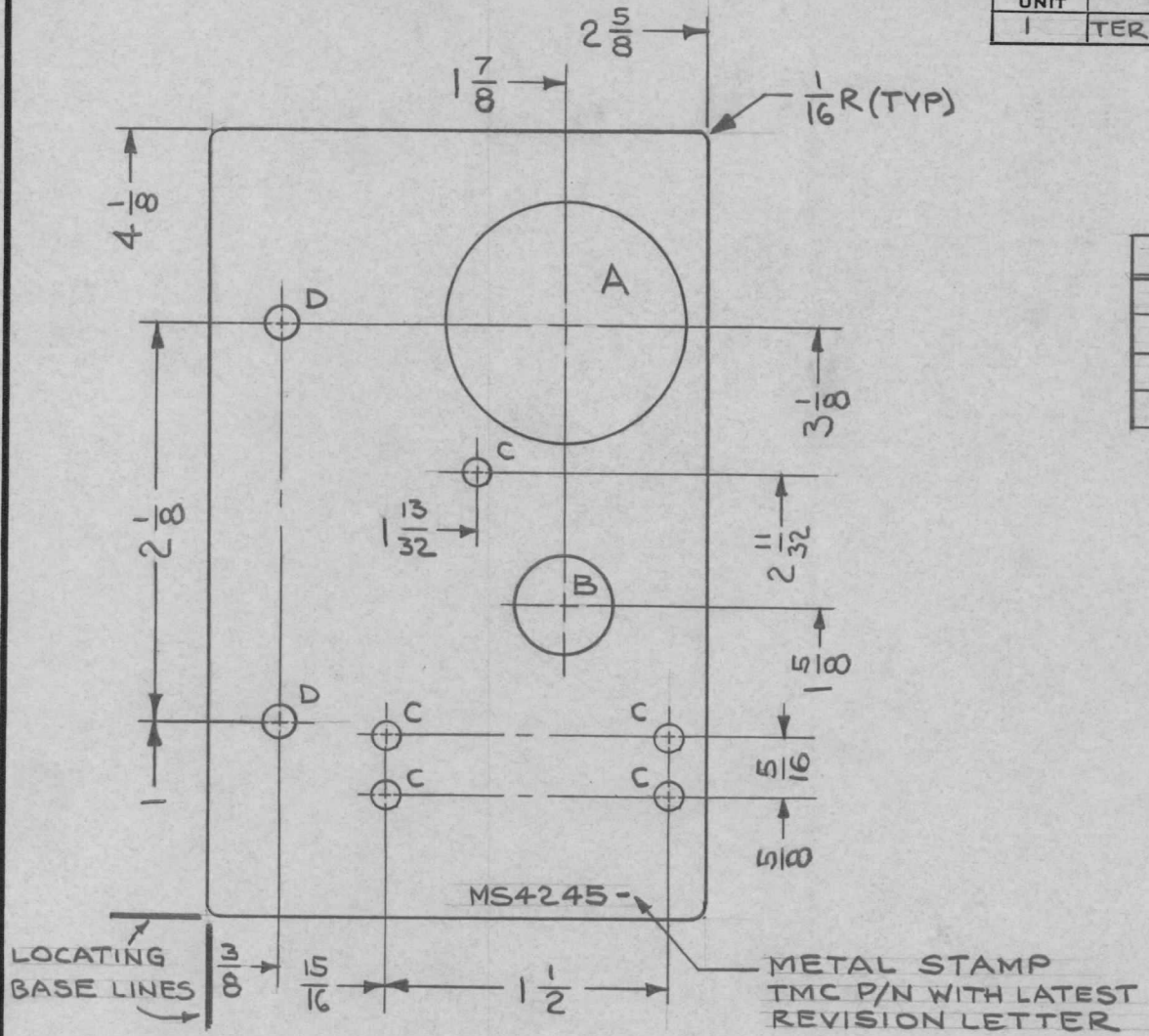


REQ. PER UNIT	USED ON			MS4245 \emptyset
	MODEL	ASS'Y. NO.	DATE	
1	TER-25K-6008		JAN. 5. 1965	



HOLE	DESCRIPTION	REQ
A	1/4 DIA	1
B	1/2 DIA	1
C	9/64 DIA	5
D	11/64 DIA	2

REF.: LD1718

SYM	DESCRIPTION	DATE	CH. NO.	DRAFTS	CHECKER	ENG. APP.	REQ. ITEM	PART NO.	DESCRIPTION	SYMBOL		
\emptyset	ORIGINAL RELEASE FOR PRODUCTION	1.8.65	X	LB				.064 THK	THE TECHNICAL MATERIEL CORP. MAMARONECK, NEW YORK	\emptyset		
								STOCK SIZE				
								ALUMINUM	PLATE, MTG, SWITCH			
								MATERIAL				
	UNLESS OTHERWISE SPECIFIED DIMENSIONS ARE IN INCHES AND INCLUDE CHEMICALLY APPLIED OR PLATED FINISHES	SCALE					5052 H32		1.8.65		MS4245 \emptyset	
		1:1					TYPE & TEMPER	HEAT TREAT. SPEC.	DRAWN			CHECKED
	DECIMALS .X \pm .05 .XX \pm .01 .XXX \pm .005	TOLERANCES	FRACTIONS \pm 1/64 ANGLES \pm 0° 30'	CODE					S404 YELL. IRIDITE			
				A					FINISH & SPEC. NO.	ELEC. DES. APP.	MECH. DES. APP.	