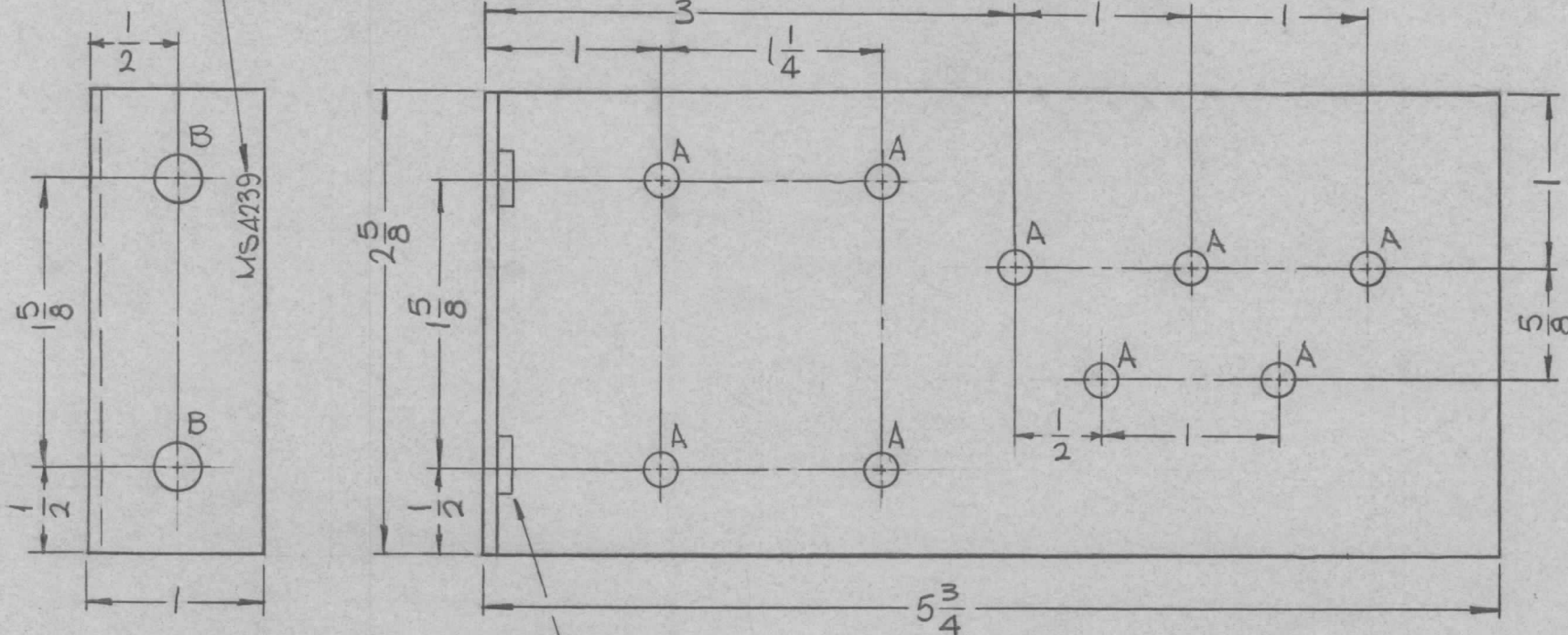


METAL STAMP TMC PART NO.  
1/8 HIGH GOTHIC W/LATEST  
REV. LETTER.

REQ. PER UNIT	USED ON			MS4239 Ø
	MODEL	ASS'Y. NO.	DATE	
1	TER-25K		12-22-64	



UNLESS OTHERWISE SPECIFIED:

1. USE MATERIAL THICKNESS FOR MAXIMUM RADIUS ON ALL BENDS
2. ALL ANGULAR BENDS 90 DEGREES
3. REMOVE ALL BURRS AND SHARP EDGES
4. MOUNT INSERTS AFTER FINISHING

① MOUNT IN ALL "B" HOLES.

HOLES	DESCRIPTION	REQ.
A	11/64 DIA.	9
B	.250-.253 DIA.	2

REF: LD 1717

2	1	NT/29-1032-4	NUT, PLAIN, SPLINE	B
REQ. ITEM		PART NO.	L. BUTLER DESCRIPTION	SYMBOL

.081 THICK

STOCK SIZE

ALUMINUM

MATERIAL

THE TECHNICAL MATERIEL CORP.  
MAMARONECK. NEW YORK

BRACKET, MTG. CAPACITOR

5052-H32

TYPE & TEMPER HEAT TREAT. SPEC.

S404 YELLOW IRIDITE

FINISH & SPEC. NO.

SRG

DRAWN

ELEC. DES. APP.

CHECKED

MECH. DES. APP.

FINAL APPROVAL

MS4239 Ø

Ø	ORIGINAL RELEASE FOR PRODUCTION	12-22-64	X	SRG			
SYM	DESCRIPTION	DATE	CH. NO.	DRAFTS	CHECKER	ENG. APP.	
UNLESS OTHERWISE SPECIFIED DIMENSIONS ARE IN INCHES AND INCLUDE CHEMICALLY APPLIED OR PLATED FINISHES		SCALE	1:1				
DECIMALS .X ± .05 .XX ± .01 .XXX ± .005	TOLERANCES	FRACTIONS ± 1/64 ANGLES ± 0° 30'	CODE A				