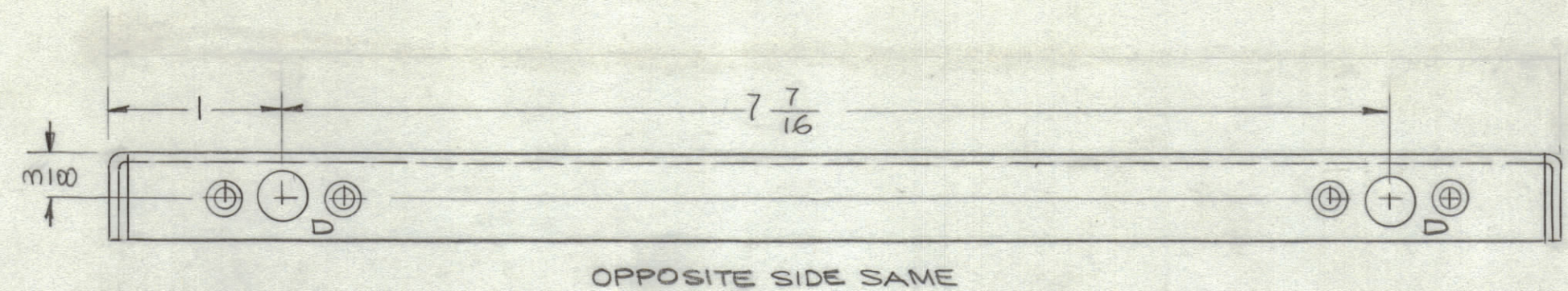
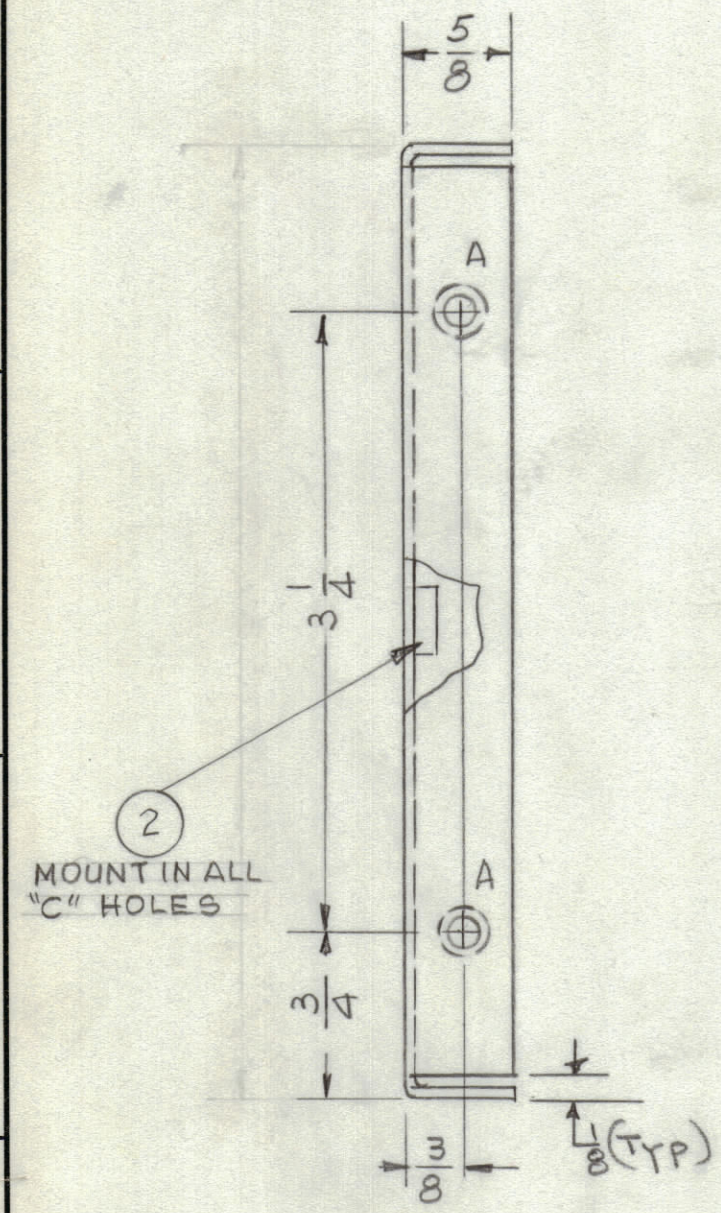
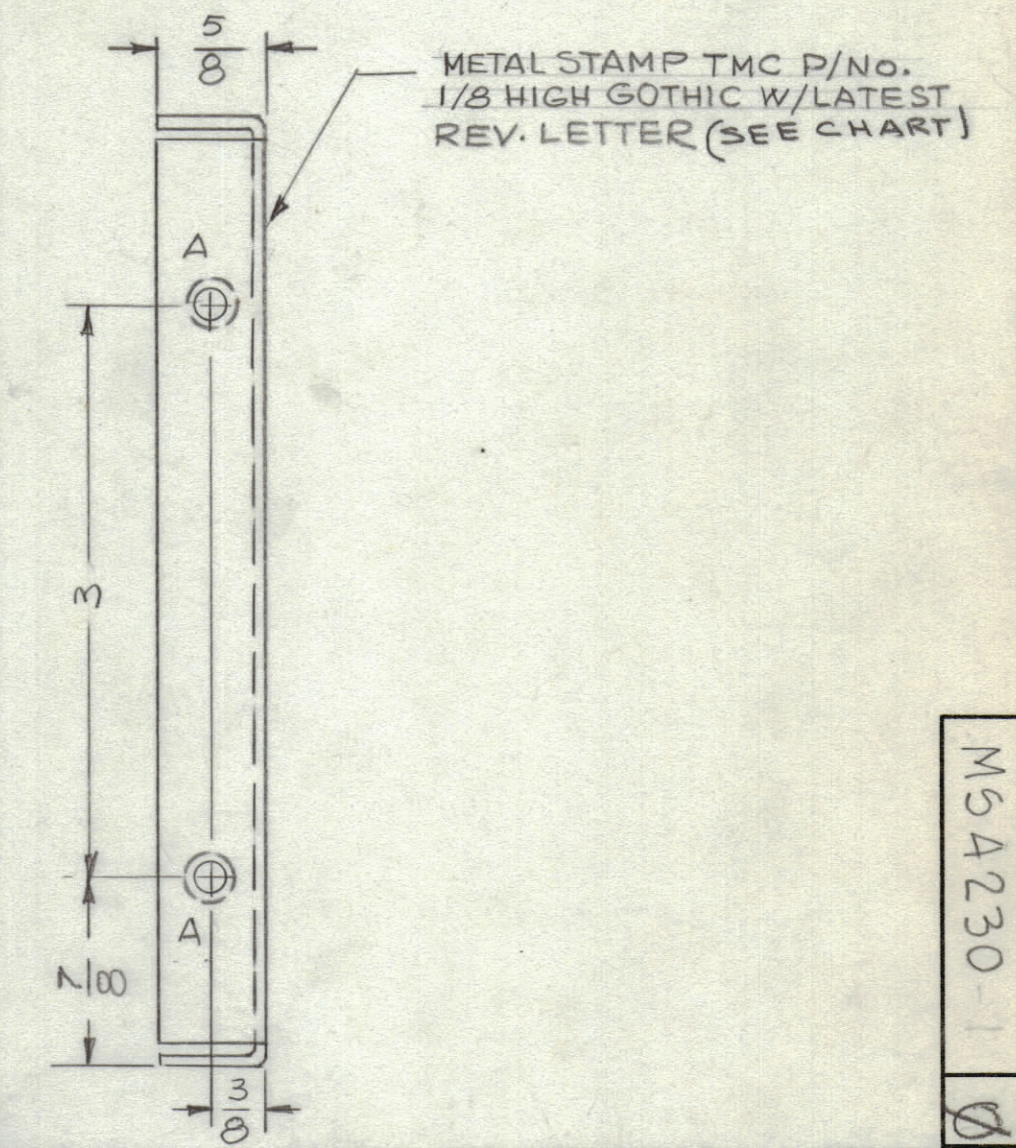
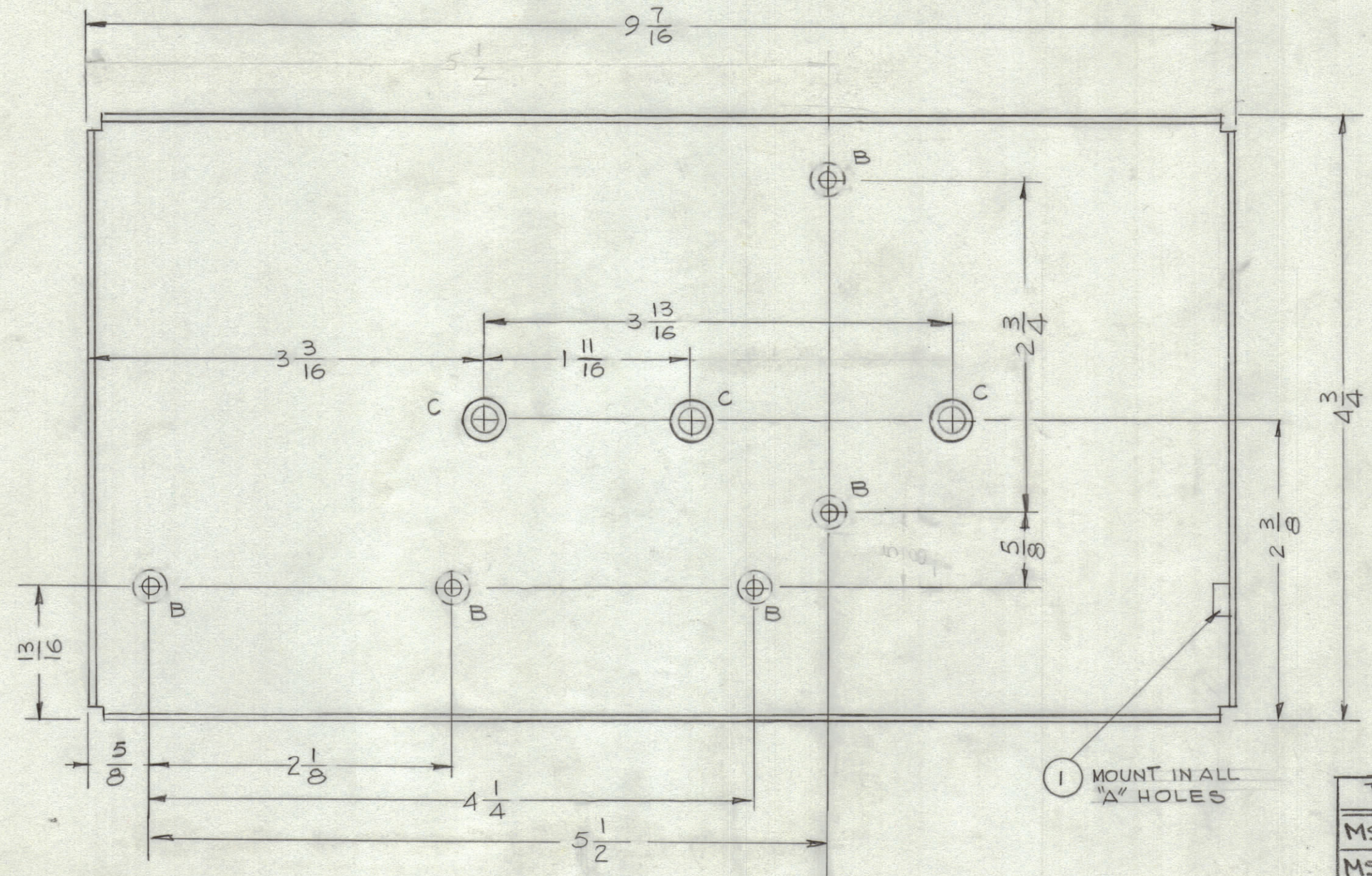


REVISIONS						
ZONE	SYM	DESCRIPTION	DATE	E.M.N. NO.	DRAFT	CHKD
	X	REVISED REDRAWN - WAS CHANNEL, LEFT & RIGHT SIDE (MS4230)	3-10-65		G.D.L.	
	Ø	ORIGINAL RELEASE FOR PRODUCTION	3/31/65			



OPPOSITE SIDE SAME



MOUNT IN ALL "A" HOLES

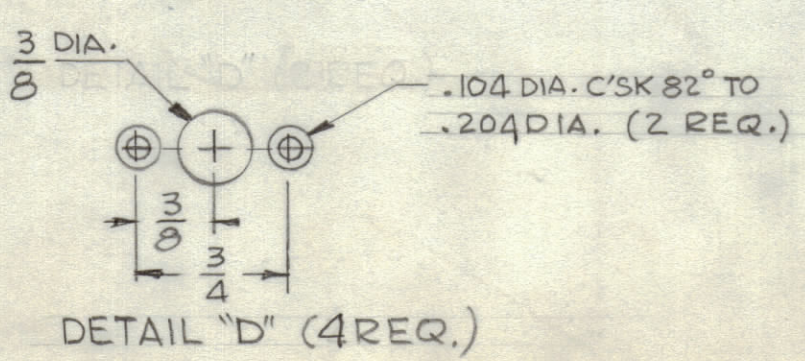
TMC PT#	DESCRIPTION
MS4230-1	PLATE, RIGHT SIDE (SHEET 1 of 2)
MS4230-2	PLATE, LEFT SIDE (SHEET 2 of 2)

PLATE, RIGHT SIDE
MS 4230-1

HOLE	DESCRIPTION	REQ
A	.224 - .221 DIA.	4
B	.104 DIA. - C'SK 82° TO .204 DIA. (2 REQ.)	5
C	.347 - .344 DIA	3
D	SEE DETAIL	4

- UNLESS OTHERWISE SPECIFIED:
- USE MATERIAL THICKNESS FOR MAXIMUM RADIUS ON ALL BENDS
 - ALL ANGULAR BENDS 90 DEGREES
 - REMOVE ALL BURRS AND SHARP EDGES
 - MOUNT INSERTS AFTER FINISHING

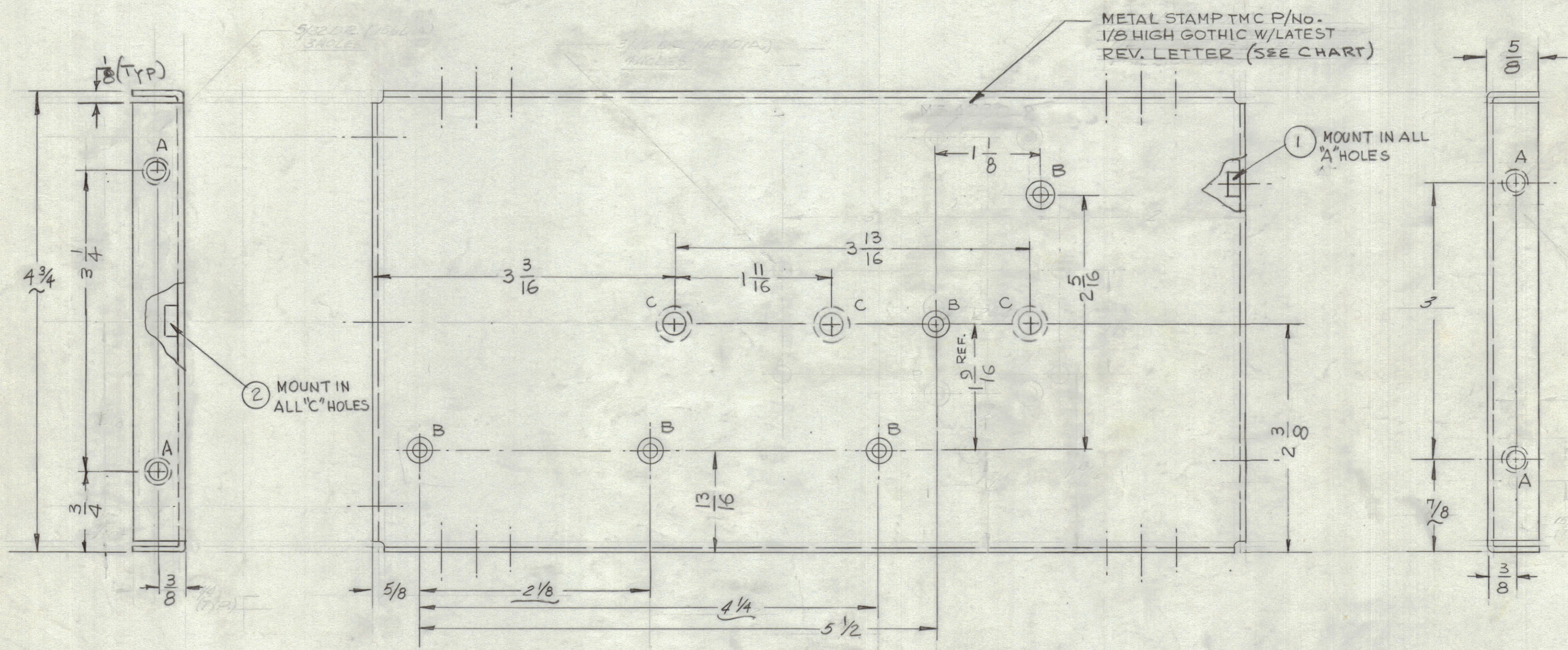
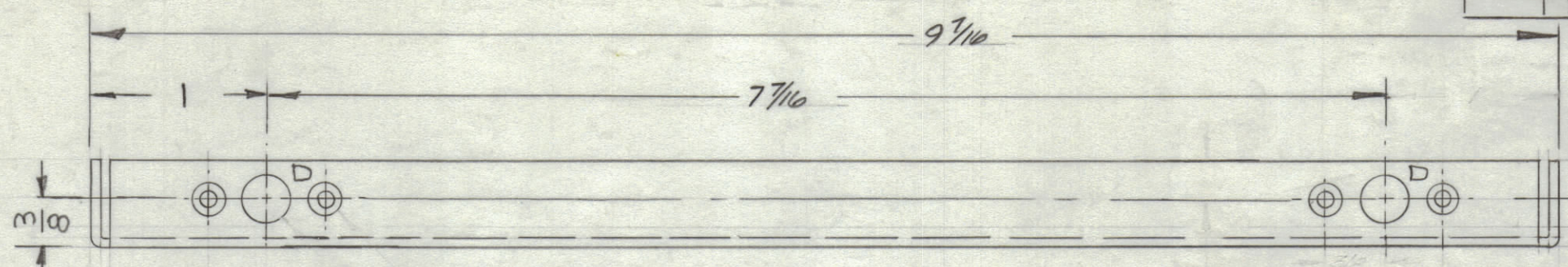
NOTES



REQ'D.	ITEM	PART NUMBER	DESCRIPTION	SYMBOL
3	2	NT129-420-4	NUT, PLAIN, SPLINE	C
4	1	NT129-832-4	NUT, PLAIN, SPLINE	A

F. BUDETTI LIST OF MATERIAL			
MATERIAL	.064 THK. ALUMINUM 5052-H32		
FINISH	S404 YEL. IRIDITE		
THE TECHNICAL MATERIEL CORP. MAMARONECK, NEW YORK		TITLE	
PLATE, RIGHT SIDE		DRAWN G.D.L. DATE 3-10-65	
UNLESS OTHERWISE SPECIFIED DIMENSIONS ARE IN INCHES AND INCLUDE CHEMICALLY APPLIED OR PLATED FINISHES		CHECKED JSTL DATE	
DECIMALS .X ± .05 .XX ± .01 .XXX ± .005		ELECT. DES. DATE 3-31-65	
FRACTIONS ± 1/64 ANGLES ± 0° 30'		MECH. DES. DATE	
THE CONTENTS OF THIS DRAWING ARE THE EXCLUSIVE PROPERTY OF THE TECHNICAL MATERIEL CORP. ITS UNAUTHORIZED USE OR REPRODUCTION IN WHOLE OR IN PART IS STRICTLY FORBIDDEN.		FINAL APPROVAL [Signature] DATE	
		MS4230-1	
		SHEET SHEET 1 of 2	

REVISIONS						
ZONE	SYM	DESCRIPTION	DATE	E.M.N. NO.	DRAFT	CHKD
	A	ADDED NOTES 2, 3, 3	10/30/64		E.D.J.	
D/EET		4 3/4 WAS 5, 3 3/4 WAS 4, 1 7/8 WAS 2	11-19		E.D.J.	
D3 & 5	B	1 13/16 WAS 1 15/16, 7/8 WAS 1 1/8	64		E.D.J.	
D2		7/8 WAS 1				
C9, 5 & 6		5/8 WAS 1/2, 2 1/8 WAS 2 3/16, 4 1/4 WAS 4 3/8, 5 7/16 WAS 5 9/16	12.29.64	X	ASB	
	X	EXPERIMENTAL RELEASE				
	X1	3 "A" HOLES WERE 5/32 DR., 2 "A" HOLES WERE 3/16 DIA. & 2 "C" HOLES 3-48. 3 "C" HOLES ADDED - IN LEFT SIDE "A" HOLES RELOCATED. ONE "B" HOLE RELOCATED DIM 5/8 WAS 9/16 - WAS CHANNEL, LEFT & RIGHT SIDE MS4230	3-9-65		G.D.L.	
	φ	ORIGINAL RELEASE FOR PRODUCTION	3/31/65			



PLATE, LEFT SIDE
MS4230-2

HOLE	DESCRIPTION	REQ
A	.224 - .221 DIA.	4
B	.144 DIA. C'SK 82° TO .284 DIA.	5
C	.347 - .344 DIA.	3
D	SEE DETAIL	4

REQ'D.	ITEM	PART NUMBER	DESCRIPTION	SYMBOL
3	2	NT129-420-4	NUT, PLAIN, SPLINE	C
4	1	NT129-832-4	NUT, PLAIN, SPLINE	A

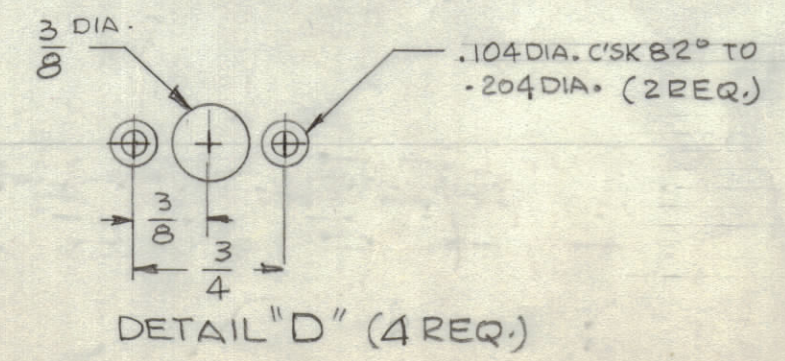
F. BUDETTI LIST OF MATERIAL 5016-3-B				
MATERIAL	THE TECHNICAL MATERIEL CORP. MAMARONECK, NEW YORK			
FINISH	TITLE			
.064 THK ALUMINUM 5052-H32	PLATE, LEFT SIDE			
S404 YEL. IRIDITE	DRAWN E.D. JENSEN DATE 10/24/64			
	CHECKED E.D. JENSEN DATE 10/24/64			
	ELECT. DES. DATE 3-31-65			
	MECH. DES. DATE 10-26-64			
UNLESS OTHERWISE SPECIFIED DIMENSIONS ARE IN INCHES AND INCLUDE CHEMICALLY APPLIED OR PLATED FINISHES				
DRAWN E.D. JENSEN DATE 10/24/64				
CHECKED E.D. JENSEN DATE 10/24/64				
ELECT. DES. DATE 3-31-65				
MECH. DES. DATE 10-26-64				
SHEET SHEET 2 of 2				

UNLESS OTHERWISE SPECIFIED:

1. USE MATERIAL THICKNESS FOR MAXIMUM RADIUS ON ALL BENDS
2. ALL ANGULAR BENDS 90 DEGREES
3. REMOVE ALL BURRS AND SHARP EDGES
4. MOUNT INSERTS AFTER FINISHING

1	KMCU-1	ASS'Y. NO.
Q'TY./UNIT	MODEL USED ON	ASS'Y. NO.
SCALE	CODE	
NONE	A	
THE CONTENTS OF THIS DRAWING ARE THE EXCLUSIVE PROPERTY OF THE TECHNICAL MATERIEL CORP. ITS UNAUTHORIZED USE OR REPRODUCTION IN WHOLE OR IN PART IS STRICTLY FORBIDDEN.		

NOTES



MS4230