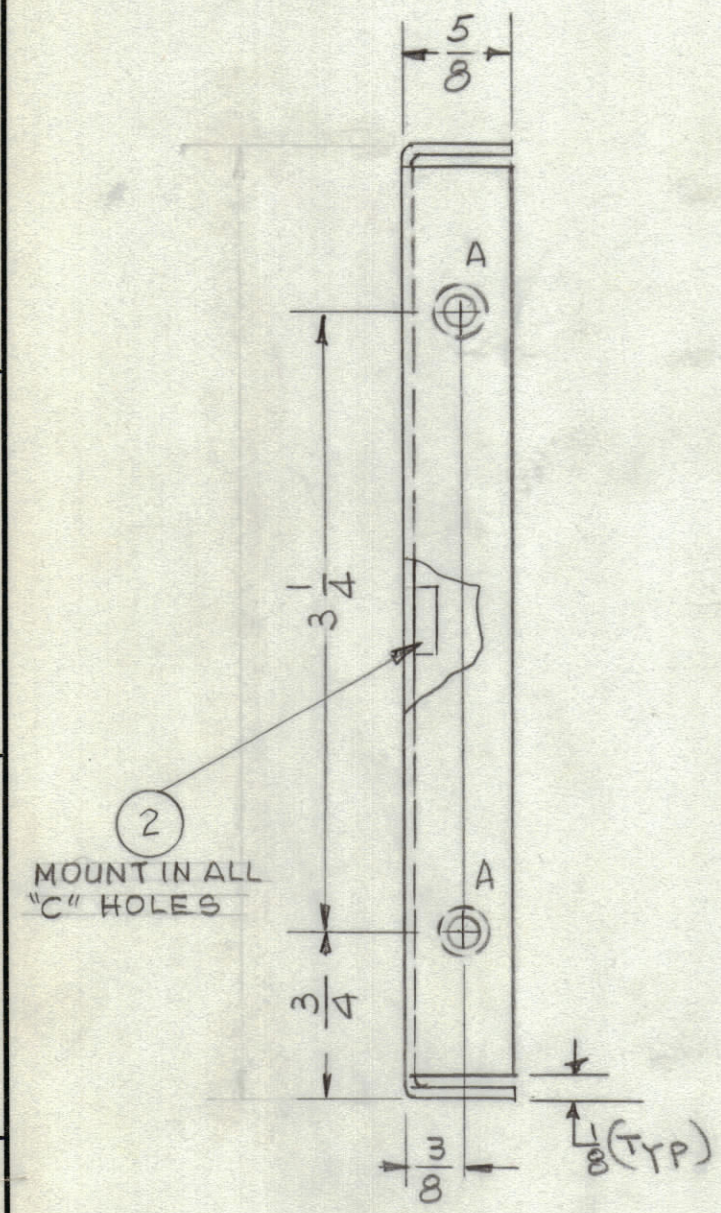
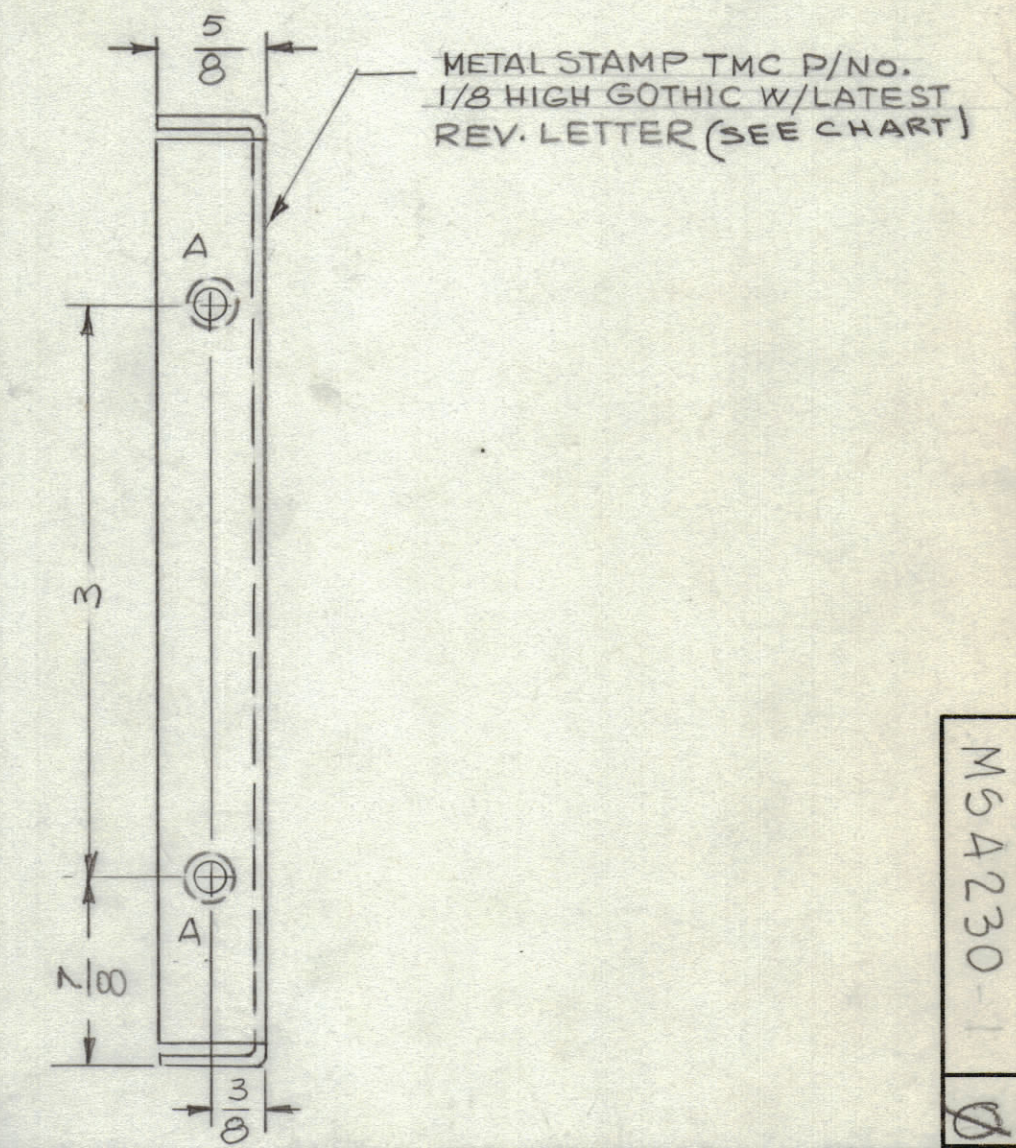
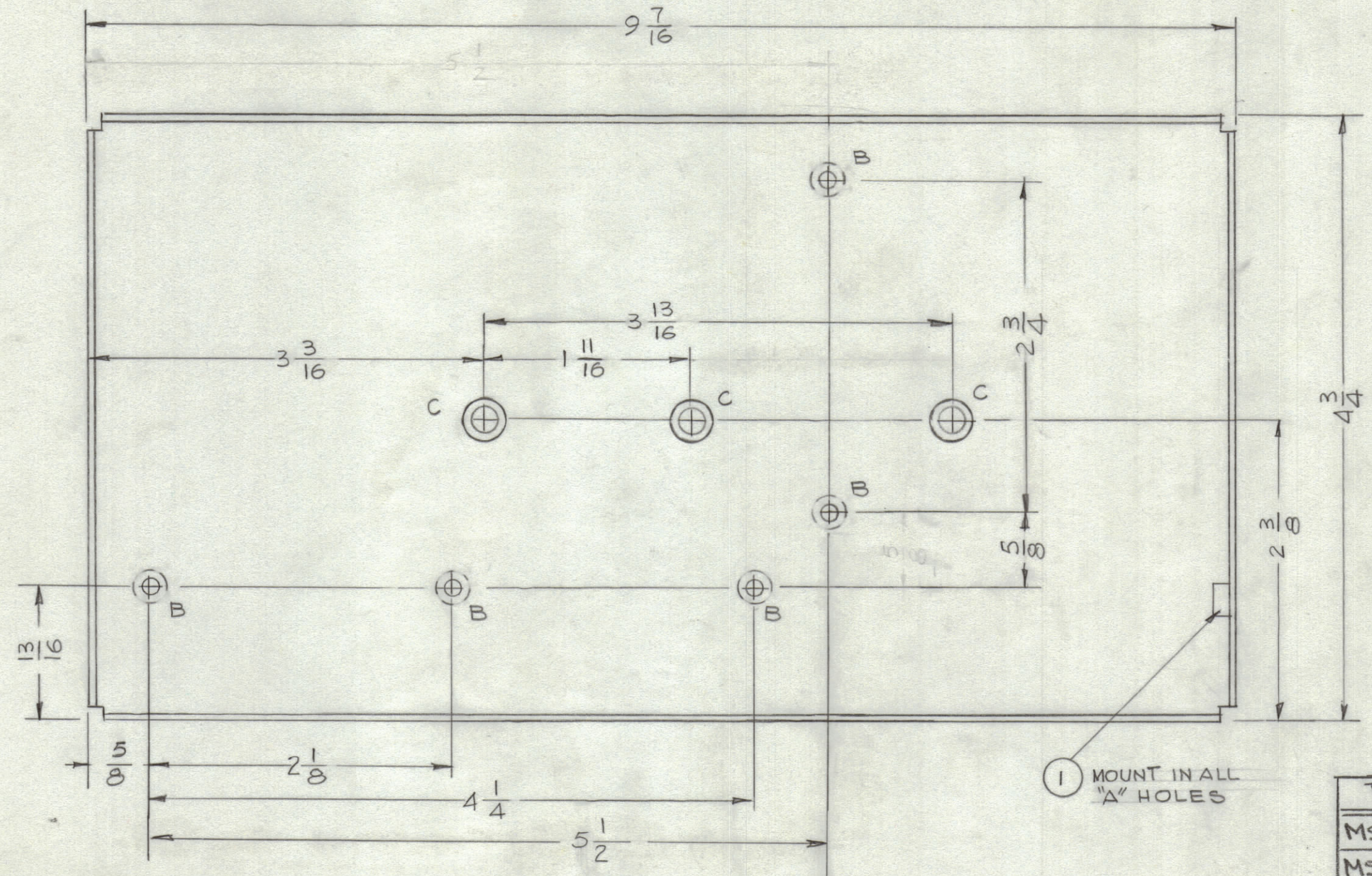
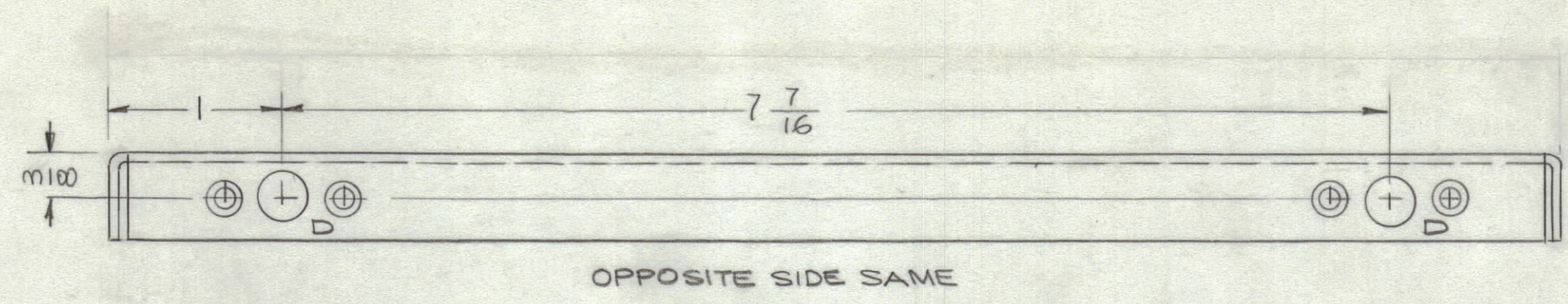


REVISIONS						
ZONE	SYM	DESCRIPTION	DATE	E.M.N. NO.	DRAFT	CHKD
	X	REVISED REDRAWN - WAS CHANNEL, LEFT & RIGHT SIDE (MS4230)	3-10-65		G.D.L.	
	Ø	ORIGINAL RELEASE FOR PRODUCTION	3/31/65			



TMC PT#	DESCRIPTION
MS4230-1	PLATE, RIGHT SIDE (SHEET 1 of 2)
MS4230-2	PLATE, LEFT SIDE (SHEET 2 of 2)

PLATE, RIGHT SIDE
MS 4230-1

HOLE	DESCRIPTION	REQ
A	.224 - .221 DIA.	4
B	.104 DIA. - C'SK 82° TO .204 DIA. (2 REQ.)	5
C	.347 - .344 DIA	3
D	SEE DETAIL	4

- UNLESS OTHERWISE SPECIFIED:
1. USE MATERIAL THICKNESS FOR MAXIMUM RADIUS ON ALL BENDS
 2. ALL ANGULAR BENDS 90 DEGREES
 3. REMOVE ALL BURRS AND SHARP EDGES
 4. MOUNT INSERTS AFTER FINISHING

NOTES

I		KMCU-1	ASS'Y. NO.
Q'TY/UNIT	MODEL USED ON		
SCALE	CODE		
DO NOT SCALE	Δ		
THE CONTENTS OF THIS DRAWING ARE THE EXCLUSIVE PROPERTY OF THE TECHNICAL MATERIEL CORP. ITS UNAUTHORIZED USE OR REPRODUCTION IN WHOLE OR IN PART IS STRICTLY FORBIDDEN.			

REQ'D.	ITEM	PART NUMBER	DESCRIPTION	SYMBOL
3	2	NT129-420-4	NUT, PLAIN, SPLINE	C
4	1	NT129-832-4	NUT, PLAIN, SPLINE	A

F. BUDETTI		LIST OF MATERIAL	
MATERIAL	.064 THK. ALUMINUM 5052-H32	THE TECHNICAL MATERIEL CORP. MAMARONECK, NEW YORK	
FINISH	S404 YEL. IRIDITE	TITLE PLATE, RIGHT SIDE	
UNLESS OTHERWISE SPECIFIED DIMENSIONS ARE IN INCHES AND INCLUDE CHEMICALLY APPLIED OR PLATED FINISHES	DRAWN G.D.L.	DATE 3-10-65	FINAL APPROVAL
DECIMALS .X ± .05 .XX ± .01 .XXX ± .005	CHECKED	DATE	DATE
FRACTIONS ± 1/64 ANGLES ± 0° 30'	ELECT. DES.	DATE 3-31-65	MS4230-1
TOLERANCES	MECH. DES.	DATE	SHEET SHEET 1 of 2

