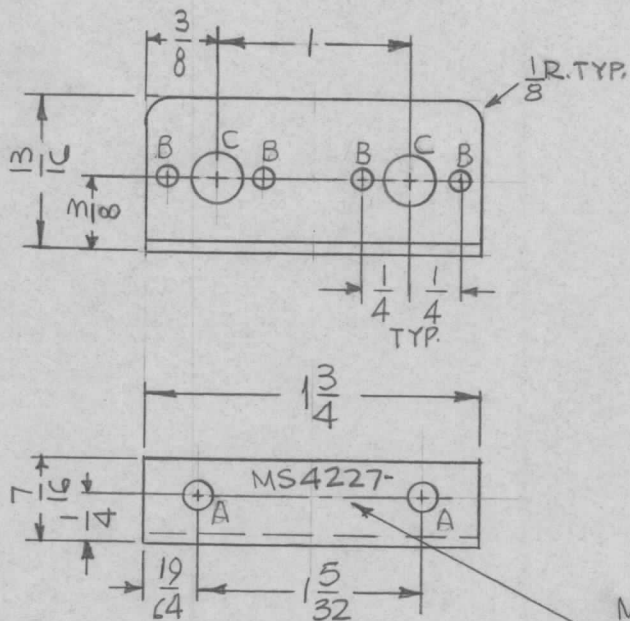


REQ. PER UNIT	USED ON			MS4227	Ø
	MODEL	ASS'Y. NO.	DATE		
1	GPT-10KLF	AX569	2-28-66		



HOLES:

- A ~ 9/64 DIA. (2 REQ.)
- B ~ 3/32 DIA (4 REQ.)
- C ~ 1/4 DIA. (2 REQ.)

UNLESS OTHERWISE SPECIFIED:

1. USE MATERIAL THICKNESS FOR MAXIMUM RADIUS ON ALL BENDS
2. ALL ANGULAR BENDS 90 DEGREES
3. REMOVE ALL BURRS AND SHARP EDGES

MARK TMC PART NO.
1/8 HIGH GOTHIC W/LATEST
REV. LETTER.

REF: LD 1706

REQ.	ITEM	PART NO.	F. BUDETTI DESCRIPTION			SYMBOL	
Ø	ORIGINAL RELEASE FOR PRODUCTION	3-1-66	Jc	JCB	102	THE TECHNICAL MATERIEL CORP. MAMARONECK, NEW YORK	
X1	13/16 DIM WAS 11/16	3-1-66	SR6				BRACKET, POTENTIOMETER
SYM	DESCRIPTION	DATE	CH. NO.	DRAFTS	CHECKER		ENG. APP.
UNLESS OTHERWISE SPECIFIED DIMENSIONS ARE IN INCHES AND INCLUDE CHEMICALLY APPLIED OR PLATED FINISHES		SCALE		1:1			
DECIMALS	FRACTIONS	CODE					
.X ± .05	± 1/64	A					
.XX ± .01	ANGLES						
.XXX ± .005	± 0° 30'						
TOLERANCES							
5052-H32		HEAT TREAT. SPEC.		DRAWN		CHECKED	FINAL APPROVAL
S404 YEL. IRIDITE							
FINISH & SPEC. NO.		ELEC. DES. APP.		MECH. DES. APP.		MS4227 Ø	