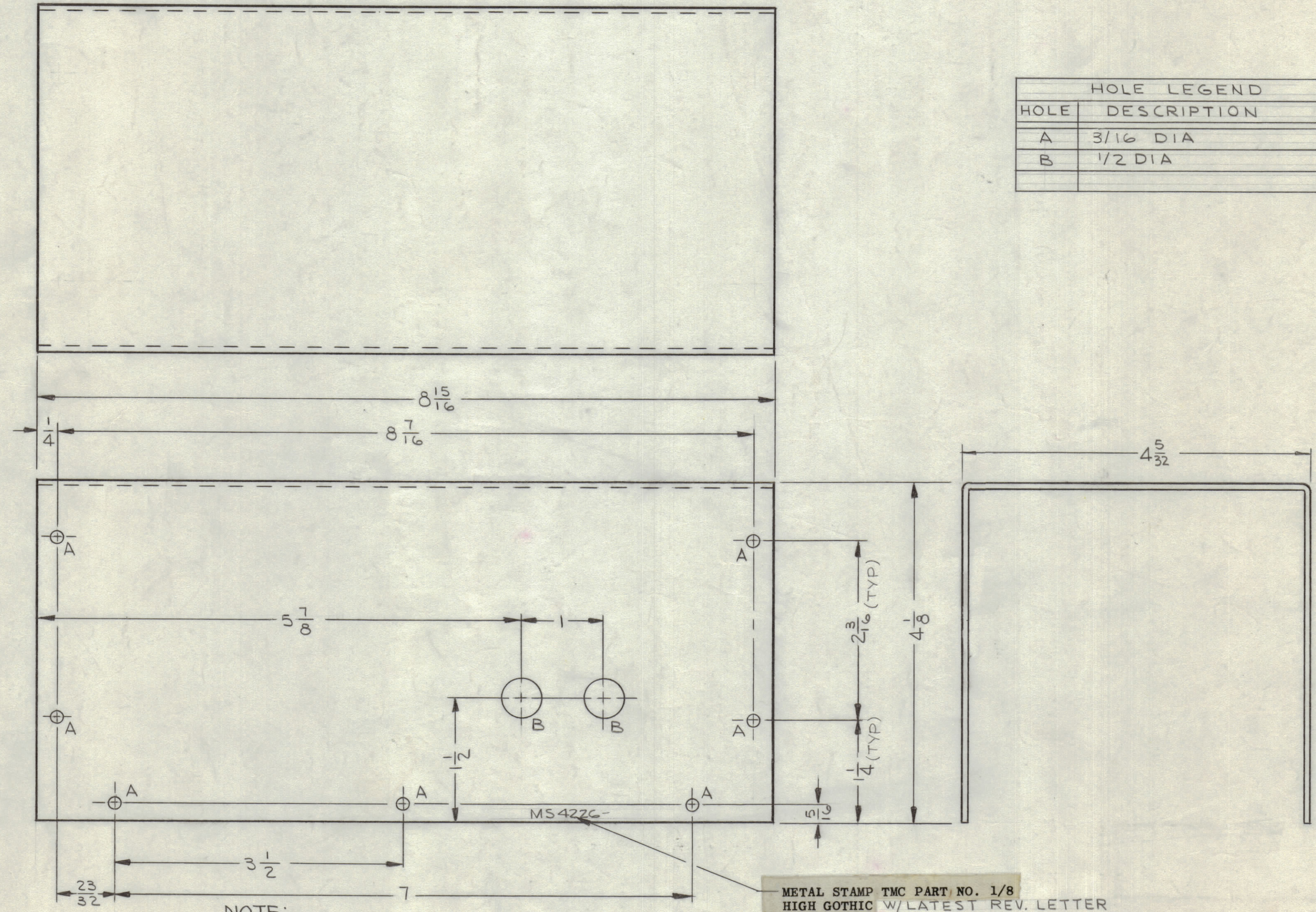


REVISIONS						
ZONE	SYM	DESCRIPTION	DATE	E.M.N. NO.	DRAFT	CHKD
	X	EXP. RELEASE	2/26/65		JL	
	Ø	ORIGINAL RELEASE FOR PRODUCTION	8/3/66		CV	
	A	ADD NOTE FOR OPPOSITE SIDE HOLE CONSTR.	8/24/66	16781	C.E.D.	
	B	AX569 ADDED TO CHART, 'A' HOLES WERE 11/64 DIA.	3-8-67	17937		

HOLE LEGEND		
HOLE	DESCRIPTION	REQD
A	3/16 DIA	14
B	1/2 DIA	2



NOTE:
ONLY "A" HOLES ON OPPOSITE SIDE, PER DIM. SHOWN.

UNLESS OTHERWISE SPECIFIED:
1. USE MATERIAL THICKNESS FOR MAXIMUM RADIUS ON ALL BENDS
2. ALL ANGULAR BENDS 90 DEGREES
3. REMOVE ALL BURRS AND SHARP EDGES

NOTES

Q'TY./UNIT	MODEL USED ON	ASS'Y. NO.
1	GPT-10KLF	AX569
SCALE 1/1	CODE	

REQ'D.	ITEM	PART NUMBER	DESCRIPTION	SYMBOL
REF: LD1708				
BUDÉTTI LIST OF MATERIAL				
MATERIAL		THE TECHNICAL MATERIEL CORP.		
.064 THK ALUMINUM		MAMARONECK, NEW YORK		
5052-H32		TITLE		
FINISH		COVER, SWR COUPLER		
YELLOW IRIDITE PER S404		DRAWN		
UNLESS OTHERWISE SPECIFIED		J. LESHINSKI		
DIMENSIONS ARE IN INCHES AND INCLUDE		DATE 2/26/65		
CHEMICALLY APPLIED OR PLATED FINISHES		CHECKED		
DECIMALS		ELECT. DES.		
.X ± .05		DATE		
.XX ± .01		MECH. DES.		
.XXX ± .005		DATE		
TOLERANCES		MS4226		
± 1/64		SHEET		
ANGLES ± 0° 30'		REV. LTR.		

H
G
F
E
D
C
B
A

MS4226
B