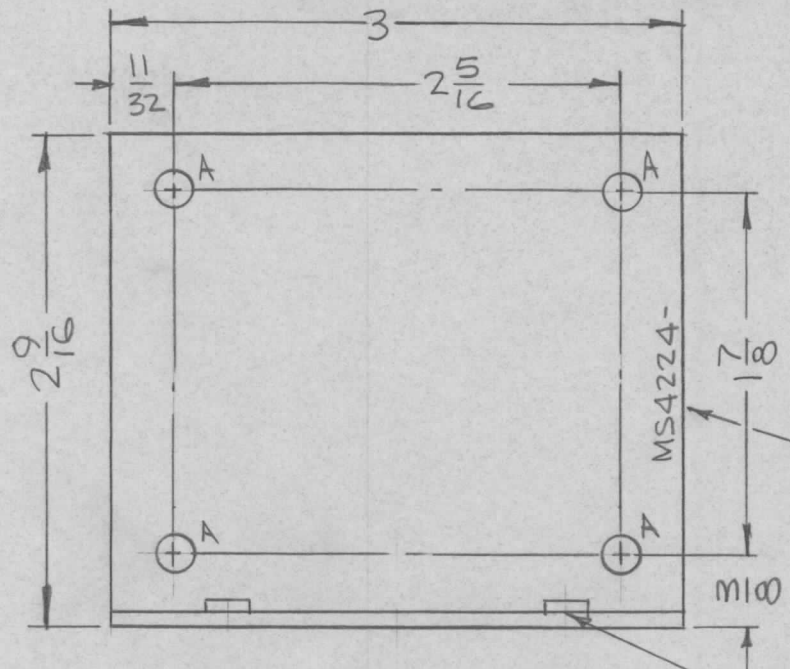


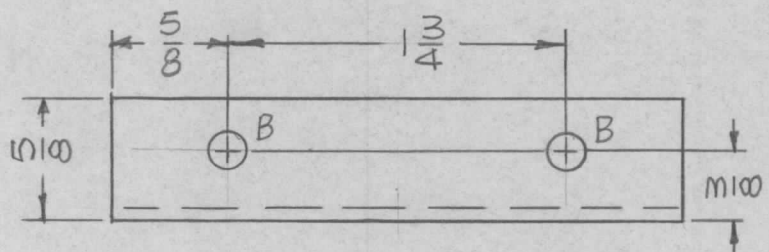
REQ. PER UNIT	USED ON			MS4224 Ø
	MODEL	ASS'Y. NO.	DATE	
1	GPT-10KLF	AX569	3-1-66	



HOLES:
 A ~ 13/64 DIA. (4 REQ.)
 B ~ .221-.224 DIA. (2 REQ.)

MARK TMC PART NO. 1/8 HIGH GOTHIC W/LATEST REV LETTER.

① MOUNT IN "B" HOLES.



UNLESS OTHERWISE SPECIFIED:

1. USE MATERIAL THICKNESS FOR MAXIMUM RADIUS ON ALL BENDS
2. ALL ANGULAR BENDS 90 DEGREES
3. REMOVE ALL BURRS AND SHARP EDGES

							2	1	NT 129-832-4	NUT, PLAIN, SPLINE	B	
							REQ. ITEM	PART NO.		F. BUDETTI	DESCRIPTION	SYMBOL
							.081 THICK		THE TECHNICAL MATERIEL CORP.			
							STOCK SIZE		MAMARONECK, NEW YORK			
							ALUMINUM		BRACKET, TRANSFORMER MTG			
							MATERIAL		SWR COUPLER			
							5052-H32		DRAWN		CHECKED	
							TYPE & TEMPER		HEAT TREAT. SPEC.		FINAL APPROVAL	
							S404 YEL. IRIDITE				MS4224 Ø	
							FINISH & SPEC. NO.		ELEC. DES. APP.		MECH. DES. APP.	
UNLESS OTHERWISE SPECIFIED DIMENSIONS ARE IN INCHES AND INCLUDE CHEMICALLY APPLIED OR PLATED FINISHES							SCALE					
							1:1					
DECIMALS .X ± .05 .XX ± .01 .XXX ± .005							TOLERANCES		FRACTIONS ± 1/64 ANGLES ± 0° 30'		CODE A	
ORIGINAL RELEASE FOR PRODUCTION							DATE		CH. NO.		DRAFTS	
							3-1-66		A		Jc	
									JCB		Hoe	