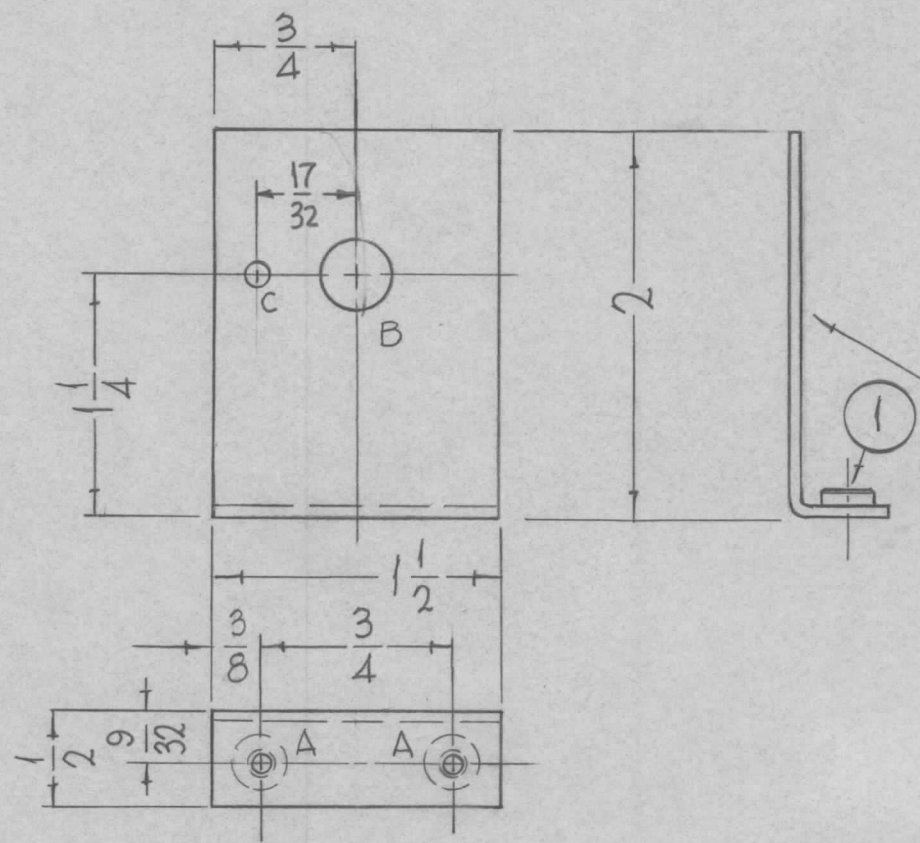


REQ. PER UNIT	USED ON			MS4222	Ø
	MODEL	ASS'Y. NO.	DATE		
2	VLLA-1		1-3-65		



- HOLES REQ
- A - .191 - .194 DIA. — 2
  - B - 3/8 DIA. — 1
  - C - 1/8 DIA. — 1

METAL STAMP  
TMC NO. MS4222-  
1/8 HIGH GOTHIC  
WITH LATEST  
REVISION LETTER  
ON THIS SURFACE.

REF. TMC DWG'S. LD1702 (1REQ)  
LD1703 (1REQ)

2	1	NT129632-4	NUT, ROUND, SWAGE TYPE	A
REQ.	ITEM	PART NO.	DESCRIPTION	SYMBOL
			.064 THICK	
			STOCK SIZE	
			ALUMINUM	
			MATERIAL	
			5052-H32	
			TYPE & TEMPER	
			HEAT TREAT. SPEC.	
			DRAWN	
			CHECKED	
			FINISH & SPEC. NO.	
			S404-IRIDITE, 14-2 AL COAT	
			ELEC. DES. APP.	
			MECH. DES. APP.	
			MS4222	Ø

Ø	ORIGINAL RELEASE FOR PRODUCTION	11-16-65	Ø	ZVK		
X2	C HOLE ADDED	11-11-65	X2	ZVK		
X1	3/8 DIM. WAS 1/4 (ON "A" HOLE)	3-17-65	X1	JCB		
SYM	DESCRIPTION	DATE	CH. NO.	DRAFTS	CHECKER	ENG. APP.
UNLESS OTHERWISE SPECIFIED DIMENSIONS ARE IN INCHES AND INCLUDE CHEMICALLY APPLIED OR PLATED FINISHES		SCALE	1:1			
DECIMALS .X ± .05 .XX ± .01 .XXX ± .005	TOLERANCES	FRACTIONS ± 1/64 ANGLES ± 0° 30'	CODE	A		