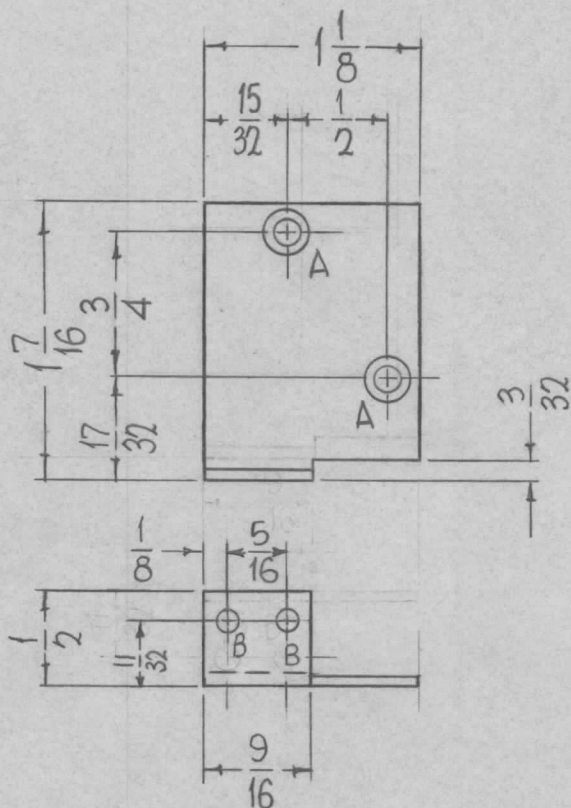
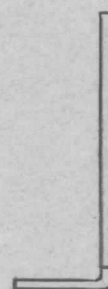


| | | | | | |
|---------------|---------|------------|--------|--------|---|
| REQ. PER UNIT | USED ON | | | MS4220 | A |
| | MODEL | ASS'Y. NO. | DATE | | |
| 1 | VLLA-1 | | 1-3-65 | | |



METAL STAMP TMC NO.
MS4220, 1/8 HIGH
GOTHIC ON THIS
SURFACE



HOLES REQ.

A - DRILL .120 DIA. 2
THRU, C'SK 82°
X.230 DIA.

B - 9/64 DIA. 2

REF-TMC DWG. LD1711

| REQ. ITEM | PART NO. | BUDETTI | DESCRIPTION | SYMBOL |
|---|---------------------|-----------------|------------------------------|--------------------------|
| | .064 THICK | | THE TECHNICAL MATERIEL CORP. | |
| | STOCK SIZE | | MAMARONECK, NEW YORK | |
| A | BOTTOM VIEW REDRAWN | 2-2-66 | 15677 | MMH JCB MMH |
| Ø | ORIGINAL RELEASE | 11-29-65 | Ø | Jude |
| SYM | DESCRIPTION | DATE | CH. NO. | DRAFTS CHECKER ENG. APP. |
| UNLESS OTHERWISE SPECIFIED DIMENSIONS ARE IN INCHES AND INCLUDE CHEMICALLY APPLIED OR PLATED FINISHES | | SCALE | | |
| DECIMALS | FRACTIONS | CODE | | |
| .X ± .05 | ± 1/64 | | | |
| .XX ± .01 | ANGLES | | | |
| .XXX ± .005 | ± 0° 30' | | | |
| TOLERANCES | | | | |
| 5052-H32 | | John C. Biele | JCB | MMH |
| TYPE & TEMPER | HEAT TREAT. SPEC. | DRAWN | CHECKED | FINAL APPROVAL |
| S404-IRIDITE, 14-2 ALCOAT | | | | |
| FINISH & SPEC. NO. | ELEC. DES. APP. | MECH. DES. APP. | MS4220 | A |