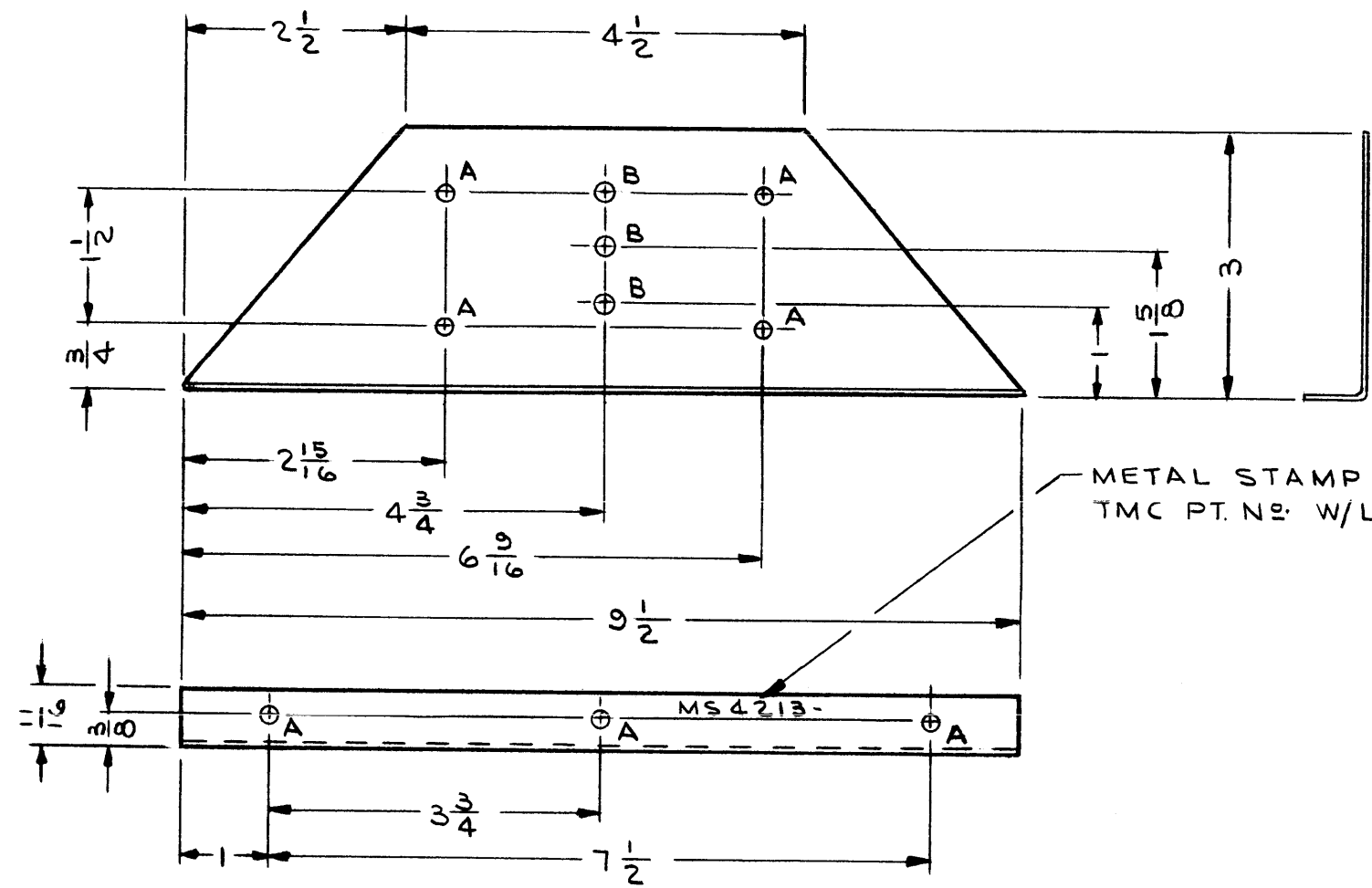


MS4213

REVISIONS

SYM	DESCRIPTION	DATE	E.M.N. NO.	DRAFT	CHKD	APPD
X	EXP. RELEASE	2/4/65		JL		
Ø	ORIGINAL RELEASE FOR PRODUCTION	2-18-66		Jc		<i>[Signature]</i>



METAL STAMP 1/8 HIGH GOTHIC
TMC PT. NO. W/LATEST REV. LETTER

HOLE LEGEND		
HOLE	DESCRIPTION	REQ'D
A	3/16 DIA	7
B	1/4 DIA	3

- UNLESS OTHERWISE SPECIFIED:
1. USE MATERIAL THICKNESS FOR MAXIMUM RADIUS ON ALL BENDS
 2. ALL ANGULAR BENDS 90 DEGREES
 3. REMOVE ALL BURRS AND SHARP EDGES
 4. MOUNT INSERTS AFTER FINISHING

REF.: LD 1700

REQ'D.	ITEM	PART NUMBER	DESCRIPTION	SYMBOL
LIST OF MATERIAL				
MATERIAL .064 THK ALUMINUM 5052-H32			THE TECHNICAL MATERIEL CORP. MAMARONECK, NEW YORK	
FINISH YELLOW IRIDITE PER TMC SPEC S404				
UNLESS OTHERWISE SPECIFIED DIMENSIONS ARE IN INCHES AND INCLUDE CHEMICALLY APPLIED OR PLATED FINISHES			DRAWN J. LESHINSKI	DATE 2/4/65
			CHECKED <i>[Signature]</i>	DATE 6-24-65
			ELECT. DES <i>[Signature]</i>	DATE
			MECH. DES <i>[Signature]</i>	DATE
			M/L	
			MS 4213	
			Ø	
			SHEET	
			REV. LTR.	

1	GPT-10KLF	
Q'TY./UNIT	MODEL USED ON	ASS'Y. NO.
SCALE 1/2	CODE	
THE CONTENTS OF THIS DRAWING ARE THE EXCLUSIVE PROPERTY OF THE TECHNICAL MATERIEL CORP. ITS UNAUTHORIZED USE OR REPRODUCTION IN WHOLE OR IN PART IS STRICTLY FORBIDDEN.		

NOTES