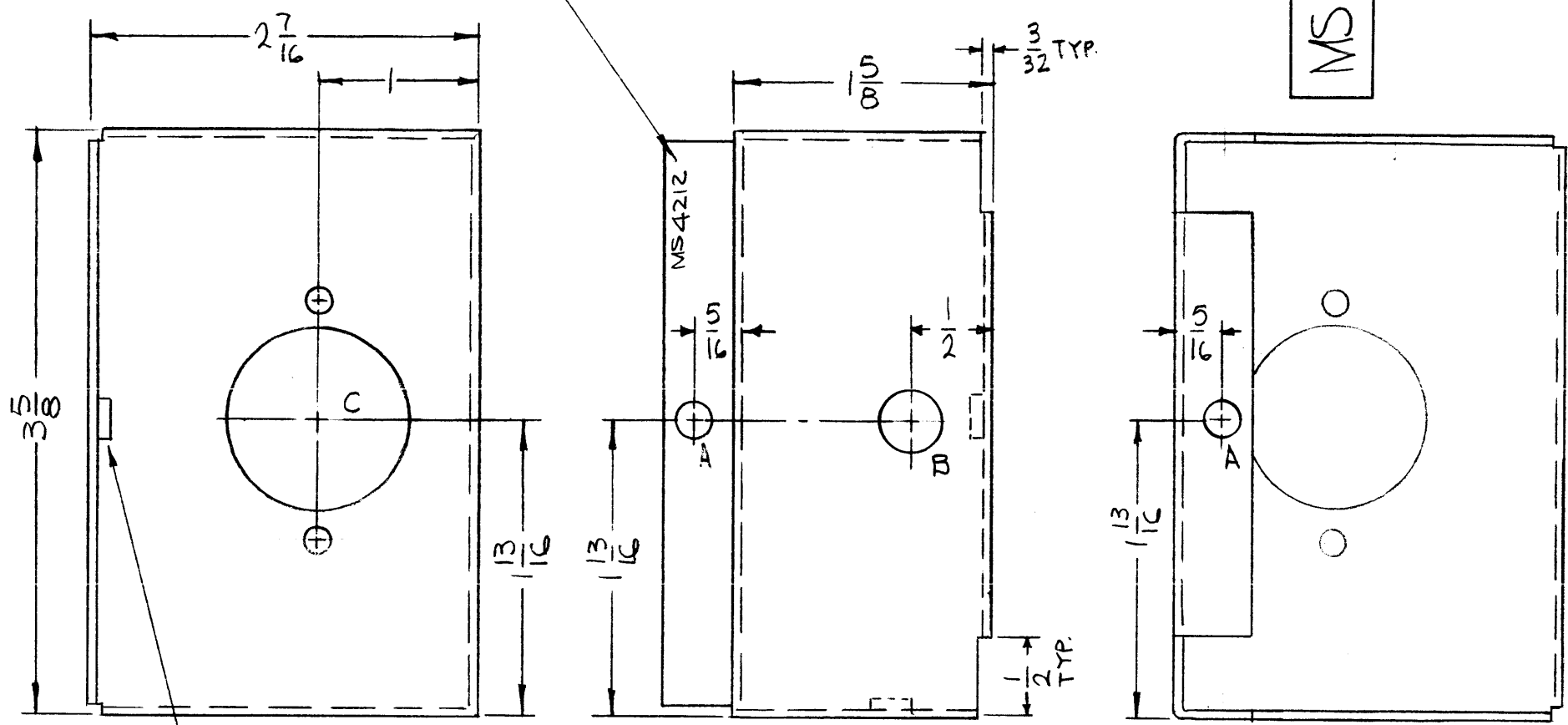


MS4212

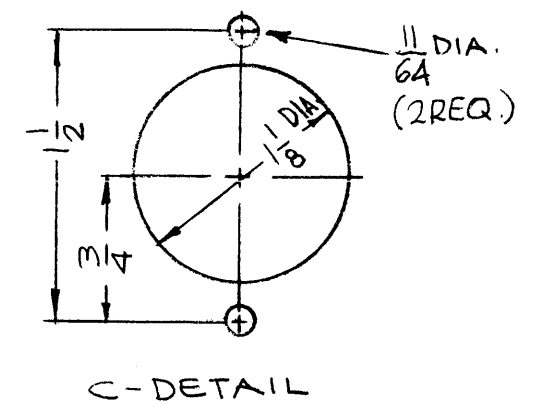
REVISIONS

SYM	DESCRIPTION	DATE	E.M.N NO	DRAFT	CHKD	APPD
Ø	ORIGINAL RELEASE FOR PRODUCTION	12/21/65	Ø			<i>[Signature]</i>

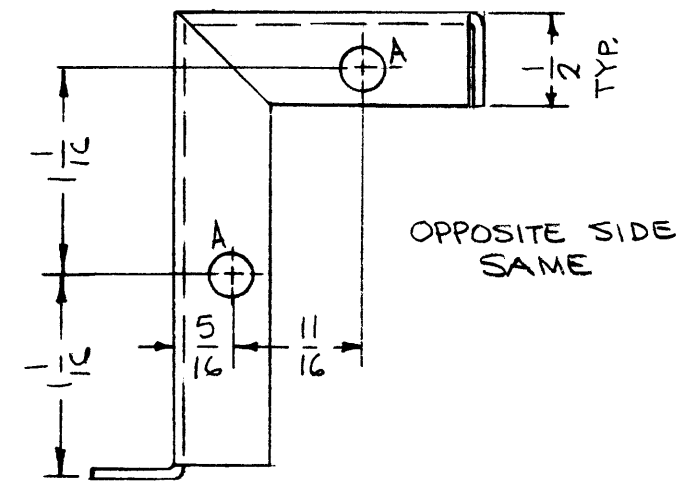
METAL STAMP TMC P/N
1/8 HIGH GOTHIC W/LATEST
8 REV. LETTER.



HOLE	DESCRIPTION	REQ
A	.221-.224 DIA.	6
B	3/8 DIA.	1
C	SEE DETAIL	1



① MOUNT IN ALL 'A' HOLES



- UNLESS OTHERWISE SPECIFIED:
1. USE MATERIAL THICKNESS FOR MAXIMUM RADIUS ON ALL BENDS
 2. ALL ANGULAR BENDS 90 DEGREES
 3. REMOVE ALL BURRS AND SHARP EDGES
 4. MOUNT INSERTS AFTER FINISHING

REF-LDI693

REQ'D.	ITEM	PART NUMBER	DESCRIPTION	SYMBOL
6	1	NT129-832-4	NUT, PLAIN, SPLINE	A

F. BUDETTI		LIST OF MATERIAL	
MATERIAL	.064 THICK ALUMINUM 5052-H32	THE TECHNICAL MATERIEL CORP. MAMARONECK, NEW YORK	
FINISH	S404 YEL IRIDITE	TITLE CHASSIS, ALDC	

Q'TY./UNIT	MODEL USED ON	ASS'Y. NO.
1	GPT-10KLF	
SCALE	CODE	
1:1	A	

THE CONTENTS OF THIS DRAWING ARE THE EXCLUSIVE PROPERTY OF THE TECHNICAL MATERIEL CORP. ITS UNAUTHORIZED USE OR REPRODUCTION IN WHOLE OR IN PART IS STRICTLY FORBIDDEN.

UNLESS OTHERWISE SPECIFIED
DIMENSIONS ARE IN INCHES AND INCLUDE
CHEMICALLY APPLIED OR PLATED FINISHES

DECIMALS	FRACTIONS	TOLERANCES	ANGLES
.X ± .05	± 1/64		± 0° 30'
.XX ± .01			
.XXX ± .005			

DRAWN	DATE	FINAL APPROV.	DATE
<i>[Signature]</i>	11-6-65	<i>[Signature]</i>	12/20/65
CHECKED	DATE	MS4212	
<i>[Signature]</i>	12/20/65		
ELECT. DES.	DATE	SHEET	
MECH. DES.	DATE	REV. LTR.	
<i>[Signature]</i>	12/22/65		