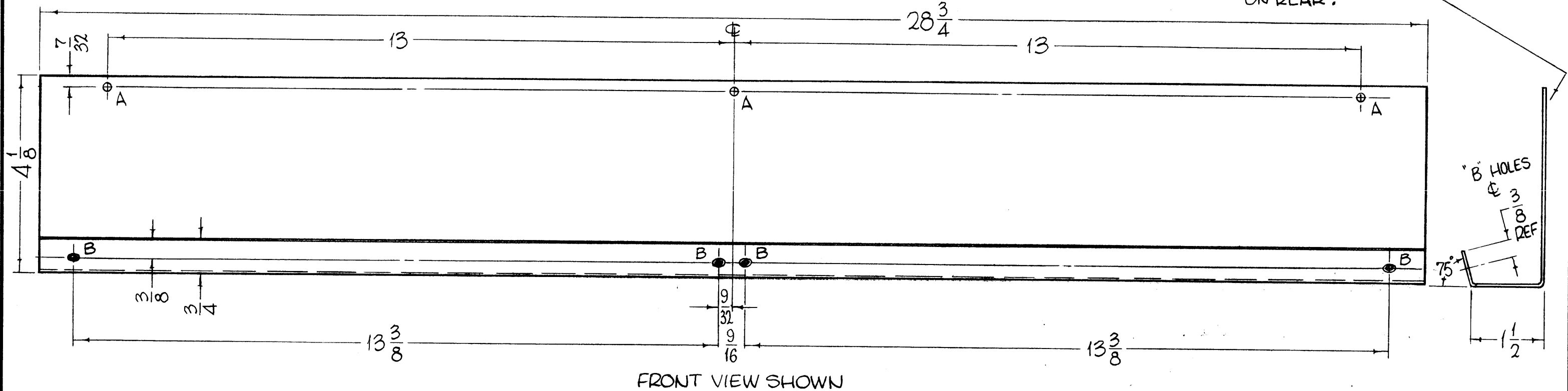


HOLES REQ.
 A-13/64 DIA. 3
 B-DRILL .156 DIA. THRU,
 CSK 82° X .281 DIA. 4

MS4204 Ø

REVISIONS					
SYM	DESCRIPTION	DATE	E.M.N. NO.	DRAFT	CHKD APPD
X	EXPERIMENTAL RELEASE	2.5.65	X	JB	
Ø	ORIGINAL RELEASE FOR PRODUCTION	12/2/65	Ø		JLQ

METAL STAMP TMC PT. NO.
 MS4204, 1/8 HIGH GOTHIC
 WITH LATEST REVISION LETTER
 ON REAR.



- FINISH NOTES:**
- S404 - IRIDITE 14-2 AL-COAT.
 - S114 - ZINC CHROMATE PRIMER)
 - S115 - SMOOTH GRAY ENAMEL)

NOTES

THE CONTENTS OF THIS DRAWING ARE THE EXCLUSIVE PROPERTY OF THE TECHNICAL MATERIEL CORP. ITS UNAUTHORIZED USE OR REPRODUCTION IN WHOLE OR IN PART IS STRICTLY FORBIDDEN.

REQ'D.	ITEM	PART NUMBER	DESCRIPTION	SYMBOL
LIST OF MATERIAL				
MATERIAL 1/16 THICK, ALUMINUM, 5052 - H32			THE TECHNICAL MATERIEL CORP. MAMARONECK, NEW YORK	
FINISH SEE NOTES			TITLE X SUPPORT, METER BOX	
UNLESS OTHERWISE SPECIFIED DIMENSIONS ARE IN INCHES AND INCLUDE CHEMICALLY APPLIED OR PLATED FINISHES		DRAWN John C Biele	DATE 1-19-65	FINAL APPROVAL [Signature]
		CHECKED [Signature]	DATE 12/20/65	DATE 12/20/65
		ELECT. DES. [Signature]	DATE	MS4204 Ø
		MECH. DES. [Signature]	DATE	Ø
		M/L [Signature]	DATE 12/20/65	SHEET
				REV. LTR.