

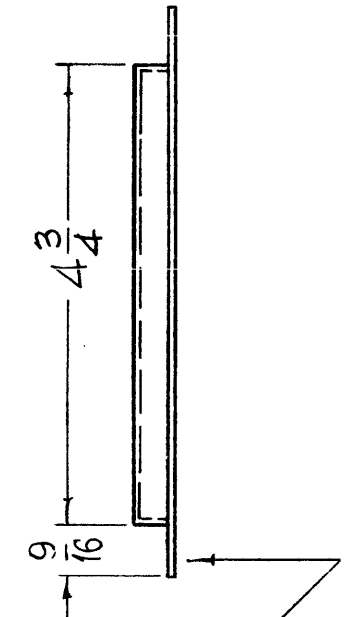
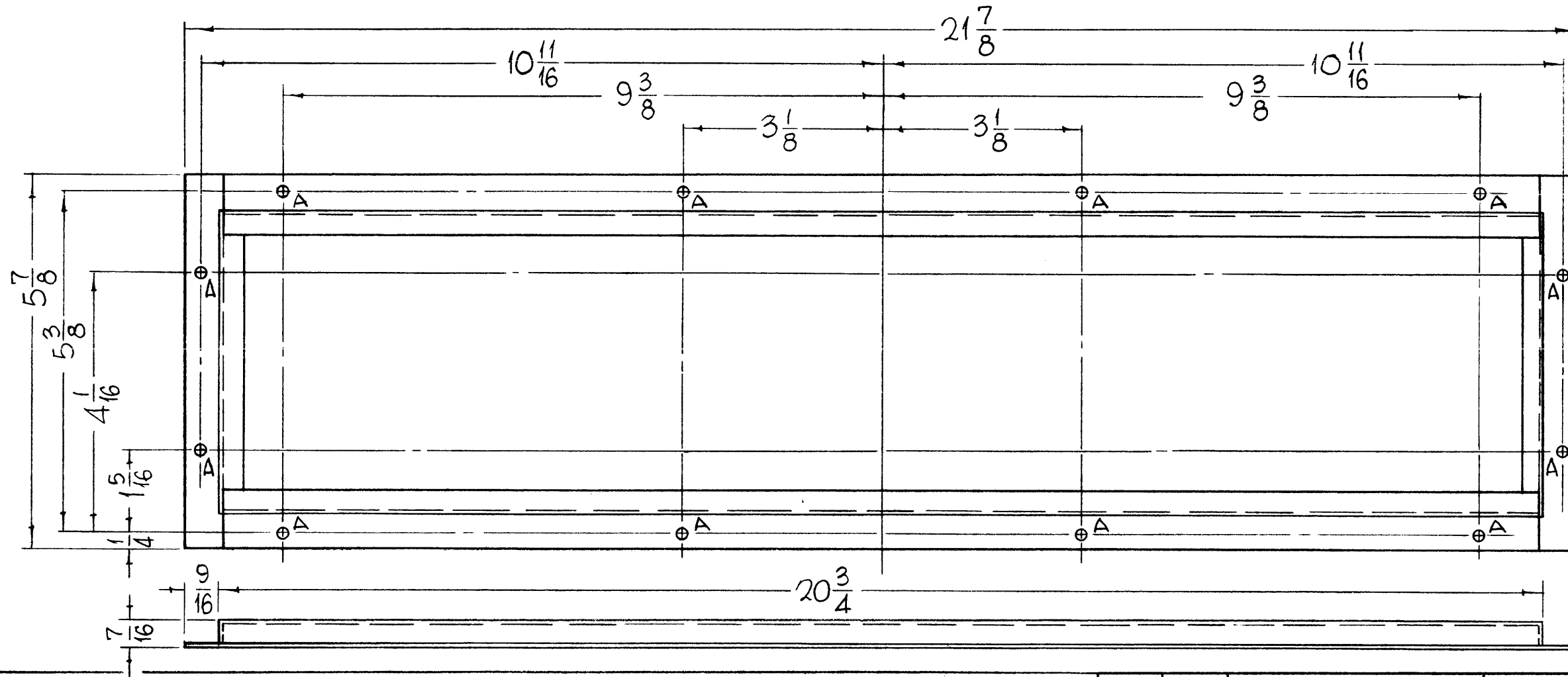
HOLES
A-3/16 DIA.

REQ.
12

MS4203

REVISIONS

SYM	DESCRIPTION	DATE	E.M.N. NO.	DRAFT	CHKD	APPD
X	EXPERIMENTAL RELEASE	2.5.65	X	AB		
Ø	ORIGINAL RELEASE FOR PRODUCTION	12/21/65	Ø			110



METAL STAMP TMC PT. NO
MS4203 - 1/8 HIGH GOTHIC
W/LATEST REVISION LETTER.

REQ'D.	ITEM	PART NUMBER	DESCRIPTION	SYMBOL
--------	------	-------------	-------------	--------

LIST OF MATERIAL

MATERIAL	.063 THICK, ALUMINUM, 5052 H32	THE TECHNICAL MATERIEL CORP. MAMARONECK, NEW YORK
FINISH	IRIDITE #404	TITLE FRAME, WINDOW

1	GPT10KLF	
Q'TY./UNIT	MODEL USED ON	ASS'Y. NO.
SCALE	CODE	

UNLESS OTHERWISE SPECIFIED DIMENSIONS ARE IN INCHES AND INCLUDE CHEMICALLY APPLIED OR PLATED FINISHES		DRAWN John C Biale	DATE 1-19-65	FINAL APPROVAL <i>[Signature]</i>	DATE 12/20/65
		CHECKED <i>[Signature]</i>	DATE 12/20/65		

NOTES

THE CONTENTS OF THIS DRAWING ARE THE EXCLUSIVE PROPERTY
OF THE TECHNICAL MATERIEL CORP. ITS UNAUTHORIZED USE OR
REPRODUCTION IN WHOLE OR IN PART IS STRICTLY FORBIDDEN.

DECIMALS .X ± .05 .XX ± .01 .XXX ± .005	TOLERANCES	FRACTIONS ± 1/64 ANGLES ± 0° 30'	ELECT. DES. <i>[Signature]</i>	DATE	MS4203	Ø
			MECH. DES. <i>[Signature]</i>	DATE	SHEET	REV. LTR.

M/L *[Signature]* 12/22/65