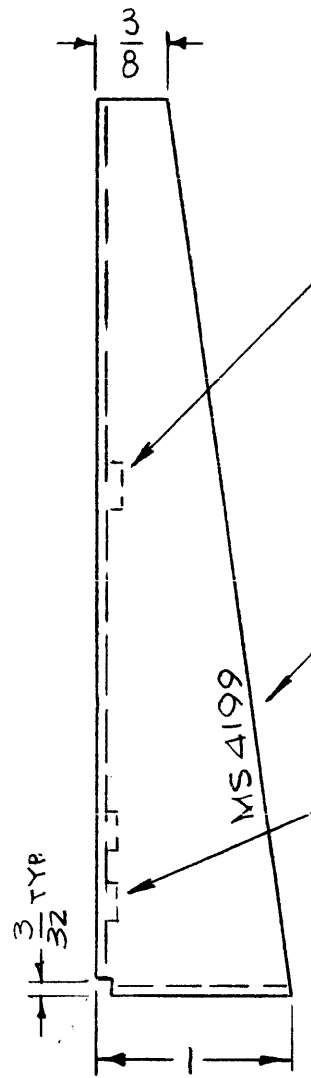
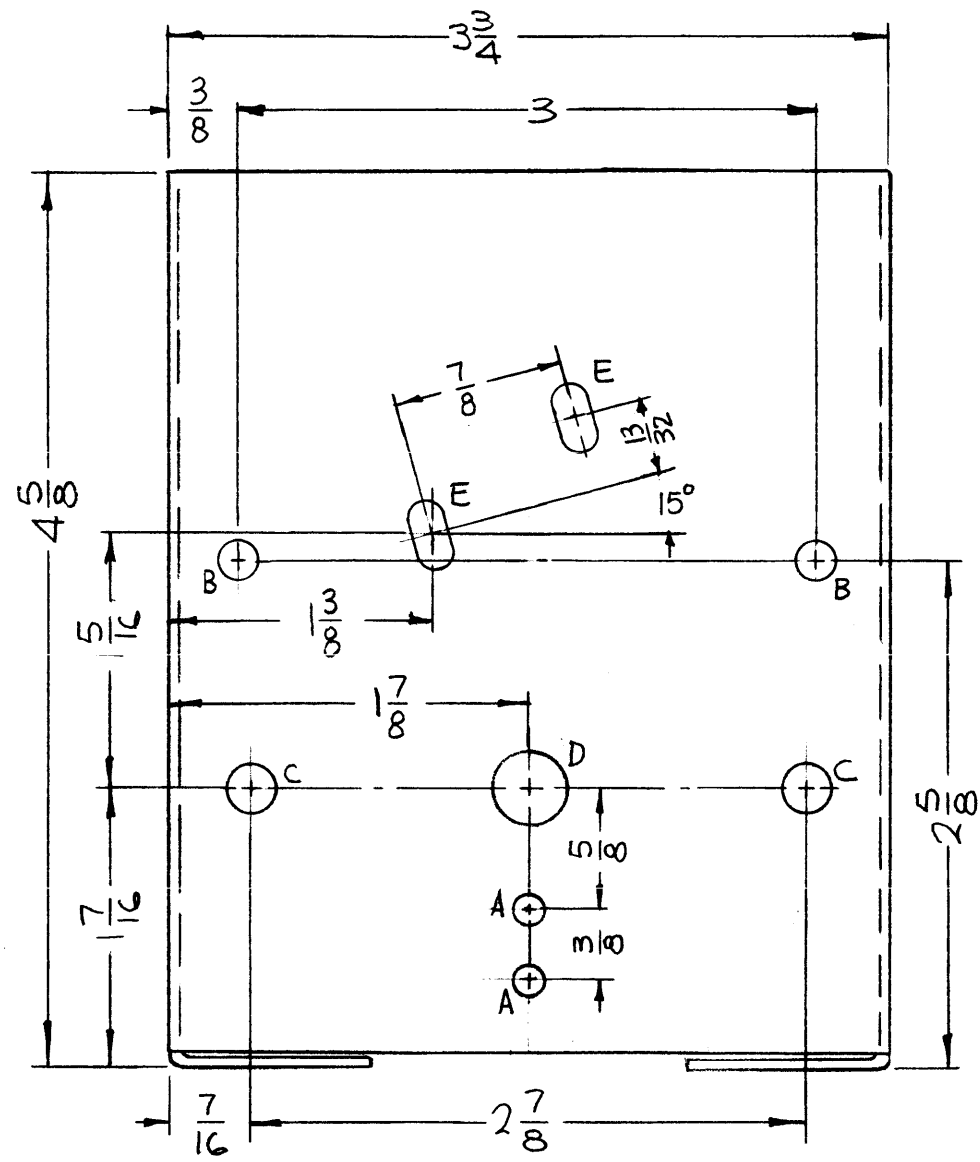


MS4199

REVISIONS

SYM	DESCRIPTION	DATE	FM N NO.	DRAFT	CHKD	APPD
Ø	ORIGINAL RELEASE FOR PRODUCTION	12/2/65	Ø			ALG



② MOUNT IN ALL B HOLES.

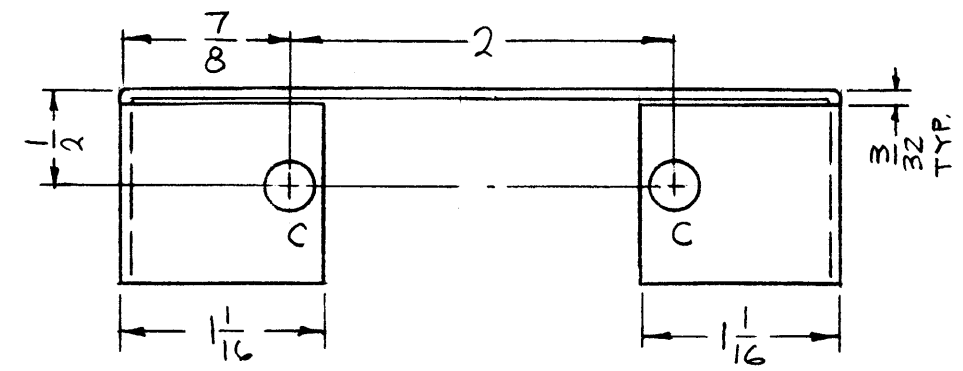
METAL STAMP TMC P/N 1 HIGH GOTHIC W/LATEST REV. LETTER.

① MOUNT IN ALL A HOLES

NOTES:  
UNLESS OTHERWISE SPECIFIED:

1. USE MATERIAL THICKNESS FOR MAXIMUM RADIUS ON ALL BENDS
2. ALL ANGULAR BENDS 90 DEGREES
3. REMOVE ALL BURRS AND SHARP EDGES
4. MOUNT INSERTS AFTER FINISHING

HOLES	DESCRIPTION	REQ
A	.161-.164 DIA.	2
B	.191-.194 DIA.	2
C	15/64 DIA.	4
D	3/8 DIA.	1
E	11/32 X 11/64 SLOT	2



REF: LD1692-1, LD1692-2

REQ'D.	ITEM	PART NUMBER	DESCRIPTION	SYMBOL
2	2	NT129-G32-4	NUT, PLAIN, SPLINE	B
2	1	NT129-440-4	NUT, PLAIN, SPLINE	A

F. BUDETTI LIST OF MATERIAL

MATERIAL: .081 THICK ALUMINUM 5052-H32

FINISH: S404 YEL. IRIDITE

TITLE: BRACKET, DETENT SWITCH

THE TECHNICAL MATERIEL CORP. MAMARONECK, NEW YORK

UNLESS OTHERWISE SPECIFIED DIMENSIONS ARE IN INCHES AND INCLUDE CHEMICALLY APPLIED OR PLATED FINISHES

DRAWN	DATE 11-4-65	FINAL APPROVAL	DATE 12/20/65
CHECKED	DATE 12/20/65		
ELECT. DES.	DATE	MS4199	
MECH. DES.	DATE		

DECIMALS: .X ± .05, .XX ± .01, .XXX ± .005  
FRACTIONS: ± 1/64, ANGLES ± 0° 30'

TOLERANCES

ML 1/20/65

SHEET

REV. LTR.

2	GPT-10KLF	ASS'Y. NO.
Q'TY./UNIT	MODEL USED ON	
SCALE 1:1	CODE A	

THE CONTENTS OF THIS DRAWING ARE THE EXCLUSIVE PROPERTY OF THE TECHNICAL MATERIEL CORP. ITS UNAUTHORIZED USE OR REPRODUCTION IN WHOLE OR IN PART IS STRICTLY FORBIDDEN.

NOTES