

IF IT IS FOUND DESIRABLE TO CHANGE ANY TOLERANCE OR OTHER DETAIL SPECIFIED ON THIS DRAWING NOTIFY THE PURCHASER PROMPTLY.

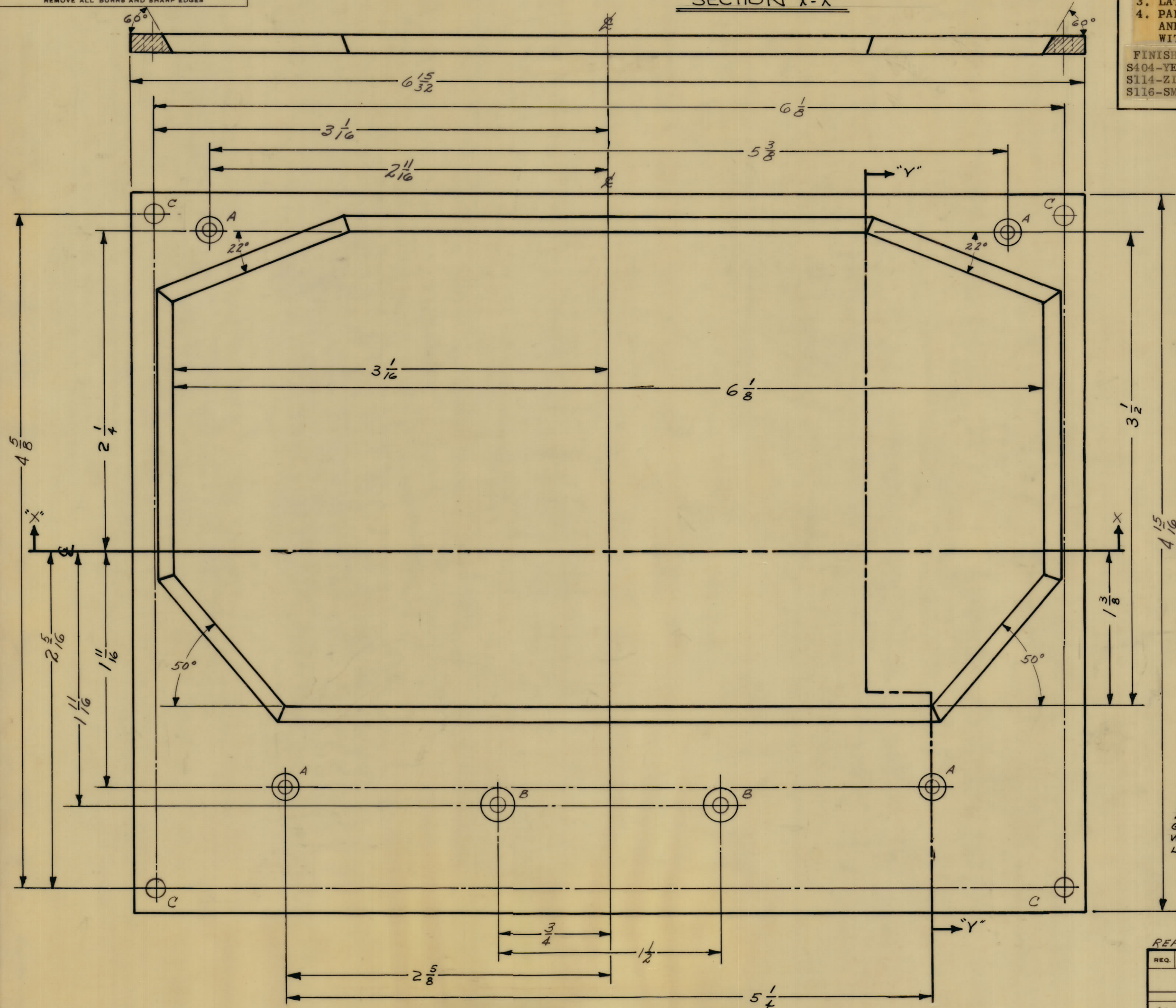
MAXIMUM ALLOWABLE TOLERANCES HAVE BEEN DETERMINED AND DEVIATIONS WILL BE CAUSE FOR REJECTION. REMOVE ALL BURRS AND SHARP EDGES

**MACHINING:**

1. MILL ALL EDGES.
2. HOLES MUST BE DRILLED, UNLESS OTHERWISE SPECIFIED.
3. LATERAL BOW OF PANEL MUST BE KEPT TO .031 TOLERANCE.
4. PANEL MUST BE FREE OF ALL MACHINING MARKS, GOUGES AND SCRATCHES. IF NECESSARY, SAND FRONT OF PANEL WITH NO. 120 GRIT SANDPAPER.

**FINISH NOTES:**  
 S404-YELLOW IRIDITE  
 S114-ZINC CHROMATE PRIMER) FRONT AND  
 S116-SMOOTH BLACK GLOSS ENAMEL) EDGES ONLY

**SECTION "X-X"**



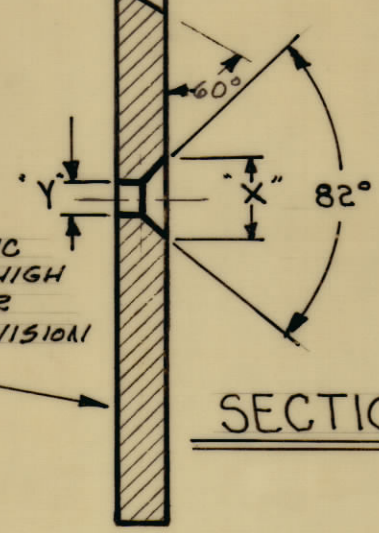
**MS4170**  $\emptyset$

DRILLING HOLE	DIM. "X"	DIM. "Y"	REQ.
A	.202	.089	4
B	.230	.120	2

"C" 1/8 DIA. 4 REQ.

METAL STAMP TMC  
 PART NO. 1/8 HIGH  
 GOTHIC, ON REAR  
 WITH LATEST REVISION  
 LETTER.

**SECTION "Y-Y"**



REF. USED WITH TMC # PX-411

REQ. ITEM	PART NO.	BUDETTI	DESCRIPTION	SYMBOL
	1/8 THICK		THE TECHNICAL MATERIEL CORP.	
	STOCK SIZE		MAMARONECK, NEW YORK	
	ALUMINUM	CP	PLATE, FRONT, METER	
	MATERIAL	WEIGHT PER PC.	PORTABLE	
	2024-T3			
	TYPE & TEMPER	G. Jeman		
	HEAT TREAT. SPEC.	DRAWN	ELEC. DES. APP.	MECH. DES. APP.
	FINISH & SPEC. NO.	@ 12-30-64	CHKD	
			CHECKED	FINAL APPROVAL
				<b>MS4170</b> $\emptyset$

ISSUE	ITEM	CHANGED FROM	DATE	CN. NO.	DRAFTS	CHECKER	ENG. APP.
$\emptyset$		ORIGINAL RELEASE FOR PRODUCTION	1-14-65	$\emptyset$	22		
X	1	EXPER. RELEASE	12-22-64	X			

TOLERANCES: SCALE: 2:1  
 ALL OTHERS: DEC. DIM.  $\pm$  FRAC. DIM.  $\pm$  ANGULAR DIM.  $\pm$   
 A: DRILL, PUNCH, COMMERCIAL STOCK SIZES AND MANUFACTURERS TOLERANCES ARE NOT INCLUDED.

REQ PER UNIT	MODEL	PROJECT NO.	ASS'Y. NO.	DATE
1	SWR-10K		A-1553	12-22-64

USED ON