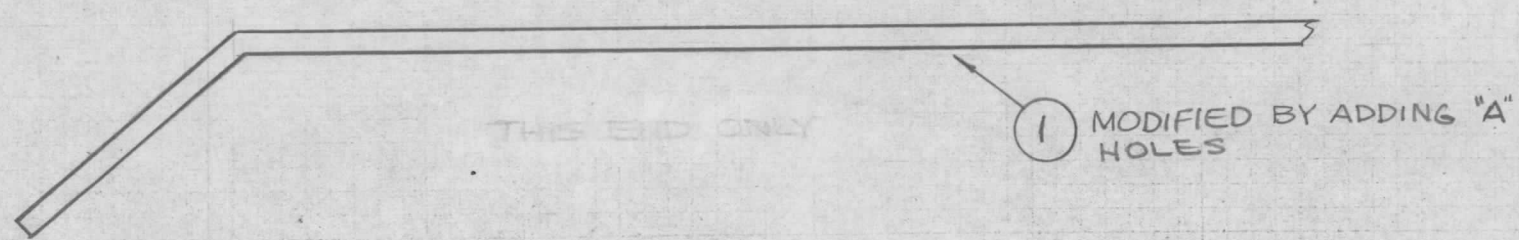
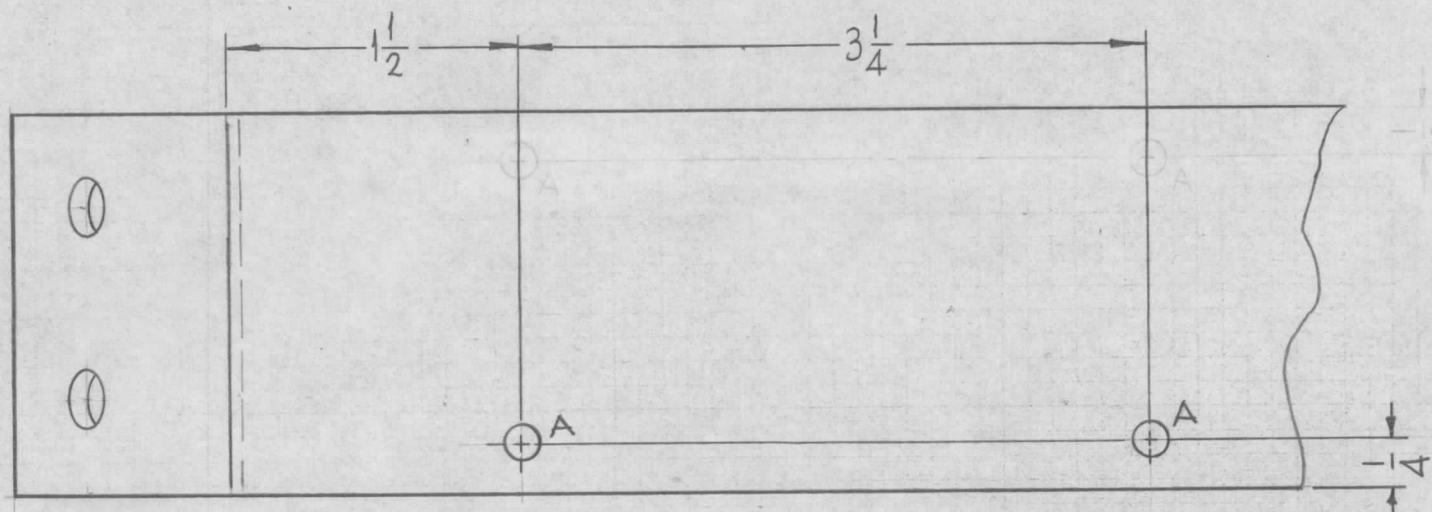


HOLE	DESCRIPTION	REQ
A	11/64 DIA.	2

REQ. PER UNIT	USED ON		
	MODEL	ASS'Y. NO.	DATE
2	COPA-2		11-9-64

MS4141 Ø



							1	1	MS 3990	BRACE, CROSS			
							REQ.	ITEM	PART NO.	M. STURMER DESCRIPTION	SYMBOL		
Ø	ORIGINAL RELEASE FOR PRODUCTION	11-17-64	Ø	9L			—		THE TECHNICAL MATERIEL CORP. MAMARONECK, NEW YORK				
X	EXP. RELEASE	11-9-64	X	SRG			—		BRACE, CROSS (RIGHT)				
SYM	DESCRIPTION	DATE	CH. NO.	DRAFTS	CHECKER	ENG. APP.	MATERIAL		SRG	@ 11-13-64	RAC		
UNLESS OTHERWISE SPECIFIED DIMENSIONS ARE IN INCHES AND INCLUDE CHEMICALLY APPLIED OR PLATED FINISHES						SCALE	1:1		TYPE & TEMPER	HEAT TREAT. SPEC.	DRAWN	CHECKED	FINAL APPROVAL
DECIMALS	TOLERANCES	FRACTIONS	CODE					—	FINISH & SPEC. NO.	ELEC. DES. APP.	MECH. DES. APP.	MS4141	Ø
X ± .05		+ 1/64	A										
XX ± .01		ANGLES											
XXX ± .005		± 0° 30'											