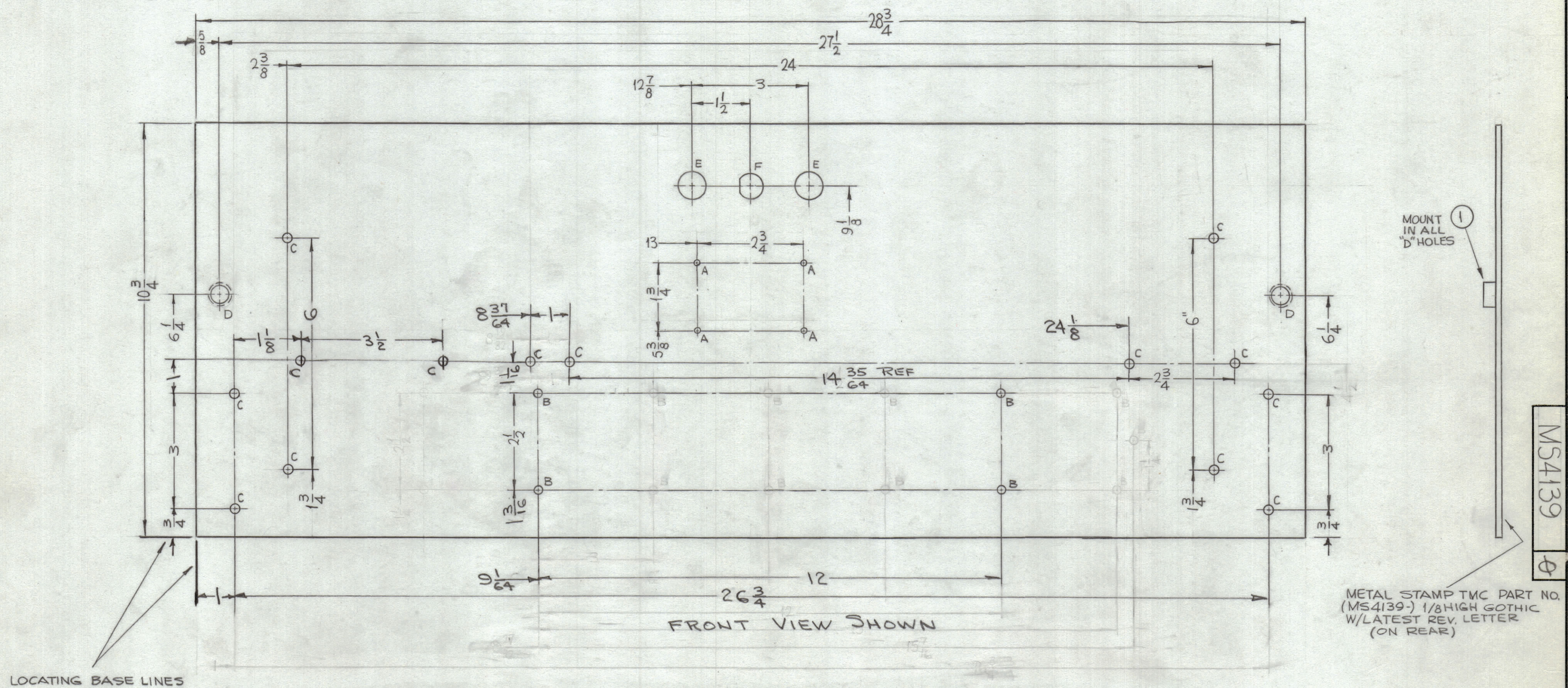


REVISIONS						
ZONE	SYM	DESCRIPTION	DATE	E.M.N. NO.	DRAFT	CHKD
	X	EXPERIMENTAL RELEASE	11-20-64	X	SRG	
	X1	COMPLETELY REDIMENSIONED	2/26/65			
	Ø	ORIGINAL RELEASE FOR PRODUCTION	2-26-65		J.P.	J.H.



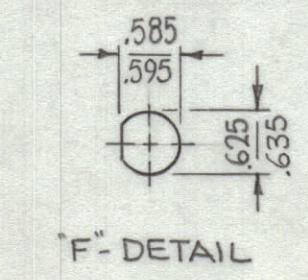
**MACHINING:**

- MILL ALL EDGES.
- HOLES MUST BE DRILLED, UNLESS OTHERWISE SPECIFIED.
- LATERAL BOW OF PANEL MUST BE KEPT TO .031 TOLERANCE.
- PANEL MUST BE FREE OF ALL MACHINING MARKS, GOUGES AND SCRATCHES. IF NECESSARY, SAND FRONT OF PANEL WITH NO. 120 GRIT SANDPAPER.

HOLE	DESCRIPTION	REQ.
A	.078 DIA.	4
B	11/64 DIA.	4
C	15/64 DIA.	14
D	DR. 453 C'SINK 82°X.570 DIA.	2
E	11/16 DIA.	2
F	SEE DETAIL	1

**FINISH NOTES:**

- S404 - IRIDITE 14-2 AL-COAT.
- S114 - ZINC CHROMATE PRIMER } FRONT AND
- S115 - SMOOTH GRAY ENAMEL } EDGES ONLY



REF: LD1654-

REQ'D.	ITEM	PART NUMBER	DESCRIPTION	SYMBOL
2	1	NT124	CAPTIVE INSERT	D

**F. BUDETTI** LIST OF MATERIAL

MATERIAL	TITLE
3/16 THICK ALUMINUM 2024-T3	THE TECHNICAL MATERIEL CORP. MAMARONECK, NEW YORK
FINISH SEE NOTES	PANEL, FRONT

DRAWN	DATE	FINAL APPROVAL	DATE
SRG		KAL	
CHECKED			
ELCCT. DES.			
MECH. DES.			

UNLESS OTHERWISE SPECIFIED DIMENSIONS ARE IN INCHES AND INCLUDE CHEMICALLY APPLIED OR PLATED FINISHES

DECIMALS: .X ± .05, .XX ± .01, .XXX ± .005  
 FRACTIONS: ± 1/64, ANGLES: ± 0° 30'

THE CONTENTS OF THIS DRAWING ARE THE EXCLUSIVE PROPERTY OF THE TECHNICAL MATERIEL CORP. ITS UNAUTHORIZED USE OR REPRODUCTION IN WHOLE OR IN PART IS STRICTLY FORBIDDEN.

MS4139

REPRODUCTION NO. 44011 18108

NOTES